



Facts & Institutional Figures

Center for Institutional Effectiveness

A 3D graphic consisting of a blue and grey ribbon that curves from the left towards the right. The text '2013 - 2014' is centered on the grey portion of the ribbon.

2013 - 2014

The College of New Jersey

Facts & Institutional Figures

Prepared By:

The Center for Institutional Effectiveness

Marie Tuscano

Assistant Director of Institutional Research

tuscano@tcnj.edu

Jennifer Sizoo

Research Analyst

sizoo@tcnj.edu

Telephone: 609/771-2801 Fax: 609/637-5136

Center for Institutional Effectiveness Homepage: <http://cie.pages.tcnj.edu>

Contents

| | |
|--|----|
| <i>Mission & Vision</i> _____ | 4 |
| <i>At A Glance</i> _____ | 5 |
| <i>SYNOPSIS OF UNDERGRADUATE DEGREE PROGRAMS AND MAJORS</i> _____ | 8 |
| <i>SYNOPSIS OF GRADUATE DEGREE PROGRAMS AND MAJORS</i> _____ | 10 |
| <i>TOP 20 MOST POPULAR UNDERGRADUATE MAJORS</i> _____ | 12 |
| <i>AVERAGE SCHOLASTIC APTITUDE TEST SCORES BY ADMIT TYPE FOR FIRST-TIME FRESHMAN</i> _____ | 13 |
| <i>FIRST-TIME FRESHMAN ADMISSIONS ACTIVITY</i> _____ | 14 |
| <i>DISTRIBUTION OF COMPLETED ADMISSIONS APPLICATIONS AND ACCEPTED OFFERS</i> _____ | 15 |
| <i>ENROLLMENT BY SCHOOL AND ATTENDANCE STATUS</i> _____ | 16 |
| <i>TRENDS IN TOTAL ENROLLMENT</i> _____ | 18 |
| <i>ETHNICITY OF STUDENTS</i> _____ | 19 |
| <i>COLLEGE ENROLLMENT BY GENDER</i> _____ | 21 |
| <i>UNDERGRADUATE ENROLLMENT BY GENDER AND RESIDENCE STATUS</i> _____ | 22 |
| <i>ENROLLMENT BY MAJOR</i> _____ | 24 |
| <i>1st TO 2nd YEAR RETENTION FOR ENTERING FIRST-TIME, FULL-TIME FRESHMEN BY SCHOOL AND ETHNICITY</i> _____ | 24 |
| <i>GRADUATION RATES FOR ENTERING FIRST-TIME, FULL-TIME FRESHMAN ETHNICITY AND GENDER</i> _____ | 26 |
| <i>DEGREES GRANTED BY SCHOOL, DEGREE TYPE AND MAJOR</i> _____ | 27 |
| <i>EMPLOYEES BY ETHNICITY AND IPEDS OCCUPATIONAL CATEGORY</i> _____ | 29 |
| <i>EMPLOYEES BY GENDER</i> _____ | 30 |
| <i>NUMBER OF FACULTY BY RANK AND TENURE STATUS</i> _____ | 31 |
| <i>TENURE STATUS AMONG FULL-TIME TENURE TRACK FACULTY</i> _____ | 32 |
| <i>AVERAGE TOTAL COMPENSATION OF FULL-TIME FACULTY BY RANK</i> _____ | 33 |
| <i>STATEMENT OF OPERATING ACTIVITIES</i> _____ | 34 |
| <i>OPERATING REVENUE, EXPENSES AND TRANSFERS</i> _____ | 35 |

| | |
|---|-----------|
| CHANGE IN NET ASSETS | 36 |
| EXTERNALLY SPONSORED ACTIVITIES | 37 |
| UNDERGRADUATE TUITION, FEES, ROOM AND BOARD CHARGES PER YEAR AND ANNUAL RATE OF INCREASE | 38 |
| BUILDING INVENTORY | 39 |
| COLLEGE LIBRARY | 40 |
| THE COLLEGE OF NEW JERSEY REGIONAL, NATIONAL, AND SPECIALIZED ACCREDITORS | 41 |
| ADMINISTRATIVE ORGANIZATION CHART | 45 |
| BOARD OF TRUSTEES | 46 |



Mission & Vision

MISSION STATEMENT

The College of New Jersey, founded in 1855 as the New Jersey State Normal School, is primarily an undergraduate and residential college with targeted graduate programs. TCNJ's exceptional students, teacher-scholars, staff, alumni, and board members constitute a diverse community of learners, dedicated to free inquiry and open exchange, to excellence in teaching, creativity, scholarship, and citizenship, and to the transformative power of education in a highly competitive institution. The College prepares students to excel in their chosen fields and to create, preserve and transmit knowledge, arts, and wisdom. Proud of its public service mandate to educate leaders of New Jersey and the nation, the College will be a national exemplar in the education of those who seek to sustain and advance the communities in which they live.

GUIDING PRINCIPLES

The College of New Jersey affirms the following Core Beliefs as fundamental to its Mission:

- The College comprises a caring, friendly, and respectful community where the contributions of students, faculty, staff and alumni are valued and recognized.
- The College provides a seamless, engaging educational environment characterized by academic freedom, creative expressions, critical thinking, intellectual inquiry, and service learning.
- The College's faculty and staff take pride in offering a personal educational experience to every undergraduate and graduate student.
- The College's cultural, social, and intellectual life are enriched and enlivened by diversity.
- The College provides facilities, programs, services, and amenities that enhance opportunities for formal and informal interaction in a living-learning environment.
- The College promotes wellness and fosters the development of the whole person.
- The College embraces its heritage and is committed to reevaluating its mission in response to the changing needs of society.
- The College prepares its students to be successful, ethical, and visionary leaders in a multicultural, highly technological, and increasingly global world.
- The College believes that an educated individual possesses an understanding of his or her own culture, an appreciation of other cultures, and the capacity to facilitate genuine cross-cultural interaction.
- The College regards education in the service of human welfare as its chief end.



At A Glance

HISTORY/LOCATION

- 1855 New Jersey State Normal School
- 1908 New Jersey State Normal School at Trenton
- 1929 New Jersey State Teachers College and State Normal School at Trenton
- 1937 New Jersey State Teachers College at Trenton
- 1958 Trenton State College
- 1996 The College of New Jersey

The College of New Jersey (TCNJ) is a highly selective institution that has earned national recognition for its commitment to excellence. TCNJ currently is ranked as one of the 75 “Most Competitive” schools in the nation by Barron’s Profiles of American Colleges, is rated the No. 1 public institution in the northern region of the country by U.S. News & World Report, and is considered a “best buy” in higher education by both Barron’s and Kiplinger’s Personal Finance. TCNJ was also awarded, in 2006, a Phi Beta Kappa chapter, an honor shared by less than 10 percent of colleges and universities nationally.

The College of New Jersey’s academic tradition reaches back to 1855 when it was established by the state legislature as the New Jersey State Normal School. It was the first teacher training school in the state and the ninth in the nation. Governor Rodman Price, sometimes called the founder of the New Jersey Normal School, promoted the idea of a training institute for New Jersey’s teachers and mobilized support among influential state leaders.

Originally located on Clinton Avenue in Trenton, the Normal School flourished in the latter 1800s, expanding both its academic offerings and physical facilities. In 1925, the first four-year baccalaureate degree program was established. This change marked the beginning of TCNJ’s transition from a normal school to a teachers’ college and was accompanied by a change in physical surroundings. In 1928, a beautiful 210-acre tract of land in Ewing Township was purchased as a new site for the College.

Graduate study was instituted at the College in 1947, and accreditation from various national associations was forthcoming in the 1950s. The enactment of the Higher Education Act of 1966 paved the way for TCNJ to become a multipurpose institution by expanding its degree programs into a variety of fields other than education. By 1972, seventy percent of entering students were selecting non-teaching majors.

In the 1970s, a period of declining enrollments nationwide, the College made a decision to raise, rather than lower, its already high standards. Since that time, the academic profile of entering

classes has continued to rise and as a result, the College has become one of the most competitive schools of its kind in the nation.

The College of New Jersey emphasizes the undergraduate experience. A strong liberal arts core forms the foundation for a wealth of degree programs offered through TCNJ's seven schools—the Arts and Communication; Business; Humanities & Social Sciences; Education; Science; Nursing, Health, and Exercise Science; and Engineering. The College is enriched by an honors program and extensive opportunities to study abroad, and its award-winning First-Year Experience and freshman orientation programs have helped make its retention and graduation rates among the highest in the country.

Today the College provides academically prepared students with a challenging undergraduate education and a rewarding residential experience, small classes, and a prestigious faculty.

ACADEMIC SCHOOLS, PROGRAMS AND DEGREES

A strong liberal arts core forms the foundation for a wealth of degree programs offered through TCNJ's seven schools—Arts & Communication; Business; Humanities & Social Sciences; Education; Science; Nursing, Health, & Exercise Science; and Engineering. The College is enriched by an honors program and extensive opportunities to study abroad, and its award-winning First-Year Experience and freshman orientation programs have helped make its retention and graduation rates among the highest in the country.

CAMPUS

Known for its natural beauty, the College's campus is set on 289 tree-lined acres in suburban Ewing Township. The College has 39 major buildings, including a state-of-the-art library; 14 residence halls that accommodate 3,600 students; an award-winning student center; more than 20 academic computer laboratories; a full range of laboratories for nursing, microscopy, science, and technology; a music building with a 300-seat concert hall; and a collegiate recreation and athletic facilities complex. TCNJ has a full-time undergraduate enrollment of approximately 6,200 students (95 percent from New Jersey).

STUDENT LIFE

The College of New Jersey encourages students to expand their talents and skills through more than 150 organizations that are open to students. These groups range from performing ensembles and professional and honor societies to student publications, Greek organizations, as well as intramural and club sports. The College also offers numerous leadership opportunities through the Student Finance Board, Student Government Association, and Residence Hall Government to name a few.

ATHLETICS

High achievement and scholarship in the classroom have been mirrored by the success of The College of New Jersey's varsity student-athletes. Since the 1978–79 Lion wrestling team captured the College's first National Collegiate Athletic Association (NCAA) team championship, TCNJ has established itself as one of the nation's most successful Division III (non-athletic scholarship) programs. Since 1979, The College of New Jersey has amassed a total of 39 Division III crowns in six different sports. In addition, the Lions have posted 32 runner-up awards, giving the College an aggregate of 71 first- and second-place finishes. That figure is tops

among the nation's 400-plus Division III colleges and universities during the past 30 years. The Lions have also produced 54 Division III CoSIDA Academic All-Americans.

As impressive as the overall athletic record is, TCNJ's accomplishment as a leader in women's sports is even greater. Since NCAA Championships were initiated for women in 1981, only TCNJ has won 32 Division III team championships. The total does not include the Lions' lacrosse championship in 1981 or the softball championships in 1980 and 1981, which were sponsored by the AIAW (Association for Intercollegiate Athletics for Women) prior to women's sports inclusion in the NCAA. In the fall of 1999, TCNJ's women's athletic program was voted as the top Division III institution for female student-athletes by *Sports Illustrated for Women*.

SYNOPSIS OF UNDERGRADUATE DEGREE PROGRAMS AND MAJORS

| | | |
|--|---|--------|
| College-Wide Programs | Self-Designed Major | BA |
| | | |
| School of the Arts & Communication | Art Education | BA |
| | Art History | BA |
| | Communication Studies | BA |
| | Digital Arts | BFA |
| | Fine Arts | BFA |
| | Graphic Design | BFA |
| | Interactive Multimedia | BA |
| | Music (options available in Performance and Teacher Preparation) | BA, BM |
| | | |
| School of Business | Accountancy | BS |
| | Business Administration (specializations in Finance, Interdisciplinary Business, International Business, Management, Marketing) | BS |
| | Economics (options available in Secondary Education and 7 Year Medical) | BA, BS |
| | | |
| School of Education | Early Childhood Education | BS |
| | Education of the Deaf and Hard of Hearing/Elementary Education** | BS |
| | Elementary Education** | BS |
| | Special Education/Elementary Education** | BS |
| | Urban Education ** | BS |
| **non-certification at the baccalaureate level; 5 year dual certification at the master's level | | |
| | | |
| School of Engineering | Biomedical Engineering (7 Year Medical option) | BSBME |
| | Civil Engineering | BSCE |
| | Computer Engineering | BSCoE |
| | Electrical Engineering | BSEE |
| | Engineering Science (specializations in Engineering Management; 7 Year Medical option) | BS |
| | Mechanical Engineering | BSME |
| | Technological Studies (options available in iSTEM Education and Technology/Pre-Engineering Education) | BS |
| | | |
| School of Humanities & Social Sciences | Criminology | BS |
| | English*** (options available in Journalism and Professional Writing) | BA |
| | History*** | BA |
| | International Studies | BA |

| | | |
|---|---|-----|
| | Philosophy ** | BA |
| | Political Science | BA |
| | Psychology | BA |
| | Sociology | BA |
| | Spanish* | BA |
| | Women's and Gender Studies | BA |
| *option in Secondary Education ** option in 7 Year Medical Programs *** options in Secondary Education and 7 Year Medical Programs | | |
| School of Nursing, Health, and Exercise Science | Health and Exercise Science (option available in Teacher Preparation) | BS |
| | Nursing | BSN |
| School of Science | Biology* | BS |
| | Chemistry* | BS |
| | Computer Science | BS |
| | Mathematics* (option available in Statistics) | BA |
| | Physics* | BS |
| *options available in Secondary Education and 7 Year Medical Programs | | |

| | |
|-------|---|
| Key | |
| BA | Bachelor of Arts |
| BFA | Bachelor of Fine Arts |
| BM | Bachelor of Music |
| BS | Bachelor of Science |
| BABME | Bachelor of Arts in Biomedical Engineering |
| BSCE | Bachelor of Science in Civil Engineering |
| BSCoE | Bachelor of Science in Computer Engineering |
| BSEE | Bachelor of Science in Electrical Engineering |
| BSE | Bachelor of Science in Engineering |
| BSME | Bachelor of Science in Mechanical Engineering |
| BSN | Bachelor of Science in Nursing |

SYNOPSIS OF GRADUATE DEGREE PROGRAMS AND MAJORS

| | | |
|----------------------------|--|-----|
| Educational Specialist | Marriage and Family Counseling | EDS |
| Master of Arts | School Counseling | MA |
| | Clinical Mental Health Counseling | MA |
| | Marriage, Couples and Family Counseling and Therapy | MA |
| | English | MA |
| Master of Arts in Teaching | Elementary Education (Leads to Certification) | MAT |
| | Early Childhood (Leads to Certification) Program A (no prior teaching certificate) Program B (already P-3 certified through alternate route)(For information please contact Dr. Jody Eberly) | MAT |
| | MAT Early Childhood: Urban (available only to graduates of TCNJ's undergraduate portion of this program) | MAT |
| | MAT Elementary: Urban (available only to graduates of TCNJ's undergraduate portion of this program) | |
| | Education of the Deaf and Hard of Hearing (available only to graduates of TCNJ's undergraduate portion of this program) | MAT |
| | Secondary Education- English (Leads to Certification) | MAT |
| | Secondary Education- Social Studies (Leads to Certification) | MAT |
| | Secondary Education- Mathematics (Leads to Certification) | MAT |
| | Secondary Education- Biology or Physical Science (Leads to Certification) | MAT |
| | Secondary Education-Technology Education (For information, please contact Dr. John Karsnitz .) 2009-2010 Planner | MAT |
| | Secondary Education- Health and Physical Education (This program is not currently accepting applications.) | MAT |
| | Special Education (Leads to Certification) Alternate Route to Special Education Certification Program | MAT |
| | Elementary Education (Leads to Certification) | MAT |
| | Special Education (Leads to Certification) (available only to graduates of TCNJ's undergraduate portion of this program) | |
| Master of Education | Teaching English as a Second Language | MED |
| | Reading (Leads to Certification) | MED |

| | | |
|------------------------------|--|-----|
| | Educational Leadership: Instruction | MED |
| | Educational Leadership (Leads to Certification) – traditional program | MED |
| | Educational Leadership (Leads to Certification) – immersion program | MED |
| | Special Education (Must be Certified in Special Education) | MED |
| | Special Education (Must be Certified in Other Area) | MED |
| | Special Education- Teacher of Students with Blindness or Visual Impairment (Must be Certified) | MED |
| | | |
| Master of Science in Nursing | Family Nurse Practitioner | MSN |
| | Family Nurse Practitioner (for Certified NPs) | MSN |
| | Adult-Gerontological Nurse Practitioner | MSN |
| | Neonatal Nurse Practitioner Planner 2008-2009 | MSN |
| | Clinical Nurse Leader *Program recently highlighted in Advance for Nurses. | MSN |
| | Bridge to the Master of Science in Nursing for RNs (not available for school nursing) | MSN |
| | School Nurse | MSN |

**TOP 20 MOST POPULAR UNDERGRADUATE MAJORS
FALL 2013**

| Rank | Major |
|------|------------------------------------|
| 1 | Psychology |
| 2 | Biology |
| 3 | Communication Studies |
| 4 | Nursing |
| 5 | Finance |
| 6 | Elementary Education |
| 7 | Accountancy |
| 8 | Marketing |
| 9 | Political Science |
| 10 | Criminology Studies |
| 11 | English |
| 12 | Health and Exercise Science |
| 13 | Management |
| 14 | Mathematics |
| 15 | Special Education |
| 16 | History |
| 17 | Mechanical Engineering |
| 18 | Chemistry (ACS-Research) |
| 19 | Computer Science |
| 20 | History Secondary Education |

Note: Counts are based on first major enrollment only.

SOURCE: CIE Enrollment data

**AVERAGE SCHOLASTIC APTITUDE TEST SCORES BY ADMIT TYPE FOR FIRST-TIME FRESHMAN
FALL 2013**

| SAT Critical Reading Scores | |
|------------------------------------|------------|
| Regular Admits | 621 |
| EOF Admits | 504 |
| All Admits | 606 |
| National Average | 496 |
| SAT Mathematics Scores | |
| Regular Admits | 641 |
| EOF Admits | 545 |
| All Admits | 629 |
| National Average | 514 |
| SAT Writing Scores | |
| Regular Admits | 628 |
| EOF Admits | 507 |
| All Admits | 613 |
| National Average | 488 |

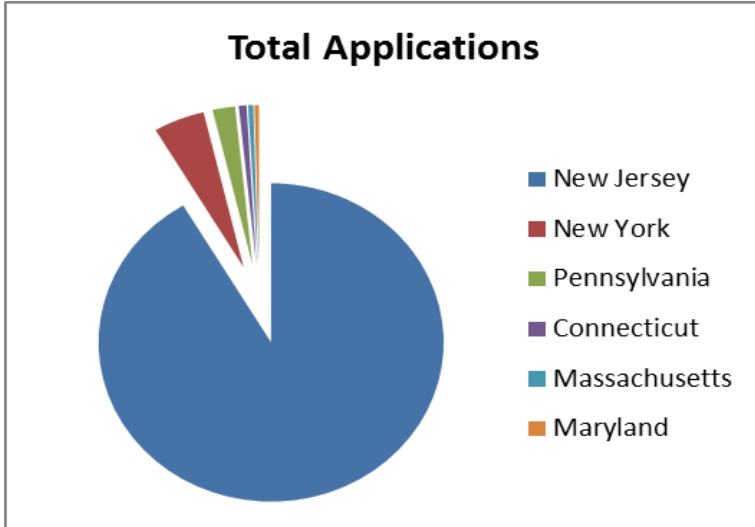
Source: TCNJ Center for Institutional Effectiveness/ETS

**FIRST-TIME FRESHMAN ADMISSIONS ACTIVITY
FALL 2013**

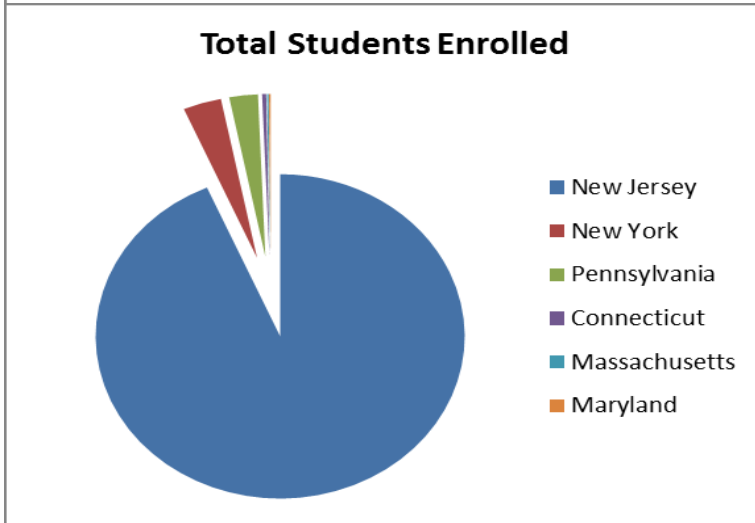
| | Total Applications | Completed Applications | Offered Admission | Offer Rate | Offer Accepted | Yield Rate |
|---------------------------|---------------------------|-------------------------------|--------------------------|-------------------|-----------------------|-------------------|
| All Students Total | 11145 | 10322 | 4805 | 46.55% | 1404 | 29.2% |
| NJResidents Total | 9925 | 9248 | 4049 | 43.78% | 1301 | 32.1% |
| NonResident Total | 1219 | 1084 | 747 | 68.91% | 103 | 13.79% |

Source: TCNJ Center for Institutional Effectiveness

**DISTRIBUTION OF COMPLETED ADMISSIONS APPLICATIONS AND ACCEPTED OFFERS
FIRST-TIME FRESHMAN FROM SELECT REGIONAL STATES
FALL 2013**



| State | Total Applications | % of Total |
|---------------|--------------------|-------------|
| New Jersey | 9981 | 89.6% |
| New York | 523 | 4.7% |
| Pennsylvania | 229 | 2.1% |
| Connecticut | 79 | 0.7% |
| Massachusetts | 51 | 0.5% |
| Maryland | 47 | 0.4% |
| California | 19 | 0.2% |
| Florida | 18 | 0.2% |
| Delaware | 16 | 0.1% |
| Virginia | 16 | 0.1% |
| Total | 11145 | 100% |



| State | Students Enrolled | % of Total |
|---------------|-------------------|-------------|
| New Jersey | 1309 | 93.2% |
| New York | 47 | 3.3% |
| Pennsylvania | 35 | 2.5% |
| Connecticut | 5 | 0.4% |
| Massachusetts | 2 | 0.1% |
| Maryland | 2 | 0.1% |
| Texas | 2 | 0.1% |
| Virginia | 1 | 0.1% |
| Alaska | 1 | 0.1% |
| Total | 1404 | 100% |

Fall 2013 CIE Admissions data

**ENROLLMENT BY SCHOOL AND ATTENDANCE STATUS
FALL 2009-2013**

| | 2009 | 2010 | 2011 | 2012 | 2013 |
|---|------|------|------|------|------|
| College Total | 6980 | 7155 | 7152 | 7270 | 7340 |
| <i>Full-Time</i> | 6326 | 6502 | 6561 | 6549 | 6653 |
| <i>Part-Time</i> | 654 | 613 | 591 | 721 | 687 |
| Undergraduate Total | 6237 | 6460 | 6504 | 6545 | 6653 |
| <i>Full-Time</i> | 6080 | 6295 | 6339 | 6340 | 6455 |
| <i>Part-Time</i> | 157 | 165 | 165 | 205 | 198 |
| Graduate Total | 745 | 655 | 648 | 725 | 687 |
| <i>Full-Time</i> | 246 | 207 | 165 | 209 | 198 |
| <i>Part-Time</i> | 497 | 448 | 426 | 516 | 489 |
| School of Arts & Communications | 625 | 654 | 718 | 705 | 746 |
| <i>Undergraduate</i> | 625 | 654 | 718 | 705 | 746 |
| <i>Full-Time</i> | 606 | 637 | 703 | 688 | 728 |
| <i>Part-Time</i> | 19 | 17 | 15 | 17 | 18 |
| School of Business | 1080 | 1059 | 1066 | 1139 | 1162 |
| <i>Undergraduate</i> | 1080 | 1059 | 1066 | 1139 | 1162 |
| <i>Full-Time</i> | 1063 | 1039 | 1045 | 1123 | 1145 |
| <i>Part-Time</i> | 17 | 20 | 21 | 16 | 17 |
| School of Humanities & Social Sciences | 1657 | 1698 | 1693 | 1705 | 1749 |
| <i>Undergraduate</i> | 1629 | 1662 | 1665 | 1674 | 1718 |
| <i>Full-Time</i> | 1584 | 1612 | 1621 | 1616 | 1660 |
| <i>Part-Time</i> | 45 | 50 | 44 | 58 | 58 |
| <i>Graduate</i> | 28 | 36 | 28 | 31 | 31 |
| <i>Full-Time</i> | 6 | 6 | 7 | 7 | 11 |
| <i>Part-Time</i> | 22 | 30 | 21 | 24 | 20 |
| School of Education | 1261 | 1303 | 1240 | 1233 | 1290 |
| <i>Undergraduate</i> | 731 | 746 | 713 | 713 | 747 |
| <i>Full-Time</i> | 721 | 740 | 704 | 699 | 737 |
| <i>Part-Time</i> | 10 | 6 | 9 | 14 | 10 |
| <i>Graduate</i> | 530 | 520 | 527 | 520 | 543 |

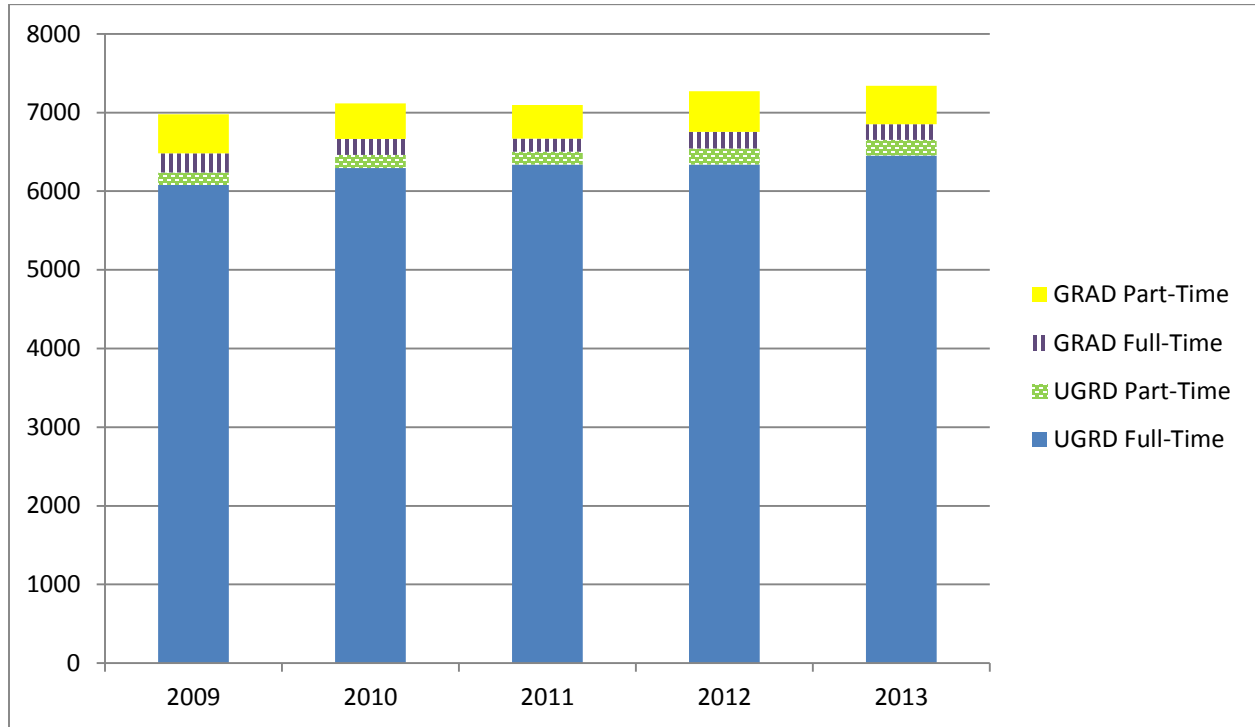
| | | | | | |
|------------------|-----|-----|-----|-----|-----|
| <i>Full-Time</i> | 215 | 190 | 211 | 197 | 180 |
| <i>Part-Time</i> | 315 | 330 | 316 | 323 | 363 |

ENROLLMENT BY COLLEGE AND ATTENDANCE STATUS (Continued)

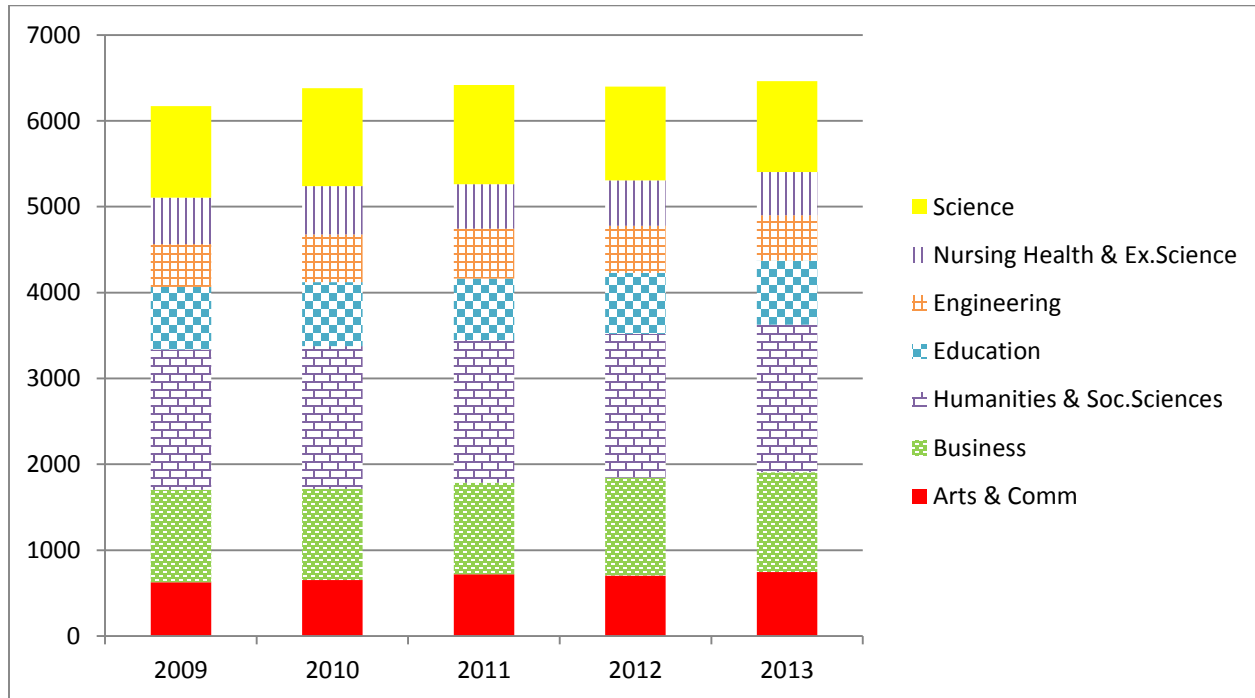
| | 2009 | 2010 | 2011 | 2012 | 2013 |
|--|-------------|-------------|-------------|-------------|-------------|
| <i>School of Engineering</i> | 502 | 557 | 581 | 546 | 529 |
| <i>Undergraduate</i> | 502 | 557 | 581 | 546 | 529 |
| <i>Full-Time</i> | 493 | 544 | 571 | 541 | 523 |
| <i>Part-Time</i> | 9 | 13 | 10 | 5 | 6 |
| <i>School of Nursing, Health & Exercise Science</i> | 579 | 592 | 544 | 553 | 528 |
| <i>Undergraduate</i> | 539 | 561 | 519 | 530 | 500 |
| <i>Full-Time</i> | 519 | 543 | 508 | 515 | 482 |
| <i>Part-Time</i> | 20 | 18 | 11 | 15 | 18 |
| <i>Graduate</i> | 40 | 31 | 25 | 26 | 28 |
| <i>Full-Time</i> | 4 | 9 | 2 | 3 | 6 |
| <i>Part-Time</i> | 36 | 22 | 23 | 23 | 22 |
| <i>School of Science</i> | 1064 | 1141 | 1154 | 1092 | 1060 |
| <i>Undergraduate</i> | 1064 | 1141 | 1154 | 1092 | 1060 |
| <i>Full-Time</i> | 1053 | 1131 | 1136 | 1073 | 1046 |
| <i>Part-Time</i> | 11 | 10 | 18 | 19 | 14 |
| <i>Non-Matriculated/Visiting/Other</i> | | | | 294 | 276 |
| <i>Undergraduate</i> | | | | 146 | 191 |
| <i>Full-Time</i> | | | | 85 | 134 |
| <i>Part-Time</i> | | | | 61 | 57 |
| <i>Graduate</i> | | | | 148 | 85 |
| <i>Full-Time</i> | | | | 2 | 1 |
| <i>Part-Time</i> | | | | 146 | 84 |

Official 10th Day headcounts
Note: Enrollment counts include first majors only.

TRENDS IN TOTAL ENROLLMENT FALL 2009-2013



TRENDS IN TOTAL UGRD ENROLLMENT BY SCHOOL Fall 2009 – 2013



**ETHNICITY OF STUDENTS
FALL 2009-2013**

| Undergraduate Race/Ethnicity | 2009 | 2010 | 2011 | 2012 | 2013 |
|---|-------------|-------------|-------------|-------------|-------------|
| <i>White</i> | 4059 | 4288 | 4277 | 4303 | 4391 |
| <i>African-American/Black</i> | 413 | 425 | 363 | 363 | 324 |
| <i>Hispanic</i> | 560 | 580 | 627 | 666 | 742 |
| <i>Asian</i> | 397 | 477 | 488 | 579 | 611 |
| <i>Native American</i> | 4 | 20 | 5 | 8 | 10 |
| <i>Native Hawaiian*</i> | - | - | 22 | 25 | 19 |
| <i>Other</i> | 52 | 31 | - | - | - |
| <i>Not Reported</i> | 752 | 639 | 584 | 504 | 477 |
| <i>Two or More Races*</i> | - | - | 118 | 81 | 63 |
| <i>Non-Resident Alien*</i> | - | - | 20 | 16 | 16 |
| Total | 6241 | 6480 | 6504 | 6545 | 6653 |

| Graduate Race/Ethnicity | 2009 | 2010 | 2011 | 2012 | 2013 |
|------------------------------------|-------------|-------------|-------------|-------------|-------------|
| <i>White</i> | 501 | 482 | 476 | 471 | 471 |
| <i>African-American/Black</i> | 47 | 31 | 44 | 48 | 52 |
| <i>Hispanic</i> | 34 | 43 | 46 | 29 | 34 |
| <i>Asian</i> | 40 | 28 | 36 | 35 | 27 |
| <i>Native American</i> | 1 | 2 | 2 | 2 | 2 |
| <i>Native Hawaiian*</i> | - | - | 4 | 2 | 3 |
| <i>Other</i> | 15 | 6 | - | - | - |
| <i>Not Reported</i> | 105 | 63 | 40 | 132 | 92 |
| <i>Two or More Races*</i> | - | - | 3 | 5 | 6 |
| <i>Non-Resident Alien*</i> | - | - | 1 | 1 | 0 |
| Total | 743 | 655 | 648 | 725 | 687 |

*Federal reporting requirements for ethnicity were revised in 2010. New categories for Native Hawaiian, Two or more races and Non-Resident Aliens were added, Other was removed.

Official 10th Day enrollment counts

ETHNICITY OF STUDENTS BY SCHOOL FALL 2013

Undergraduate Race/Ethnicity

| Undergraduate | African American | Asian | Hispanic | Native American | Native Hawaiian | NonResident Alien | Not Reported | Two or more races | White | Total |
|--|------------------|------------|------------|-----------------|-----------------|-------------------|--------------|-------------------|-------------|-------------|
| <i>School of Arts & Communications</i> | 29 | 40 | 65 | 2 | 1 | 2 | 58 | 10 | 539 | 746 |
| <i>School of Business</i> | 53 | 91 | 119 | 3 | 4 | 3 | 84 | 14 | 791 | 1162 |
| <i>School of Humanities & Social Sciences</i> | 103 | 122 | 211 | 2 | 3 | 2 | 118 | 13 | 1144 | 1718 |
| <i>School of Education</i> | 25 | 26 | 85 | 0 | 1 | 1 | 38 | 2 | 569 | 747 |
| <i>School of Engineering</i> | 27 | 47 | 65 | 1 | 1 | 2 | 34 | 4 | 348 | 529 |
| <i>School of Nursing Health & Exercise Science</i> | 20 | 42 | 64 | 0 | 4 | 0 | 44 | 5 | 321 | 500 |
| <i>School of Science</i> | 52 | 221 | 113 | 2 | 3 | 5 | 65 | 15 | 584 | 1060 |
| <i>Non-Matriculated/Visiting & Other</i> | 15 | 22 | 20 | 0 | 2 | 1 | 36 | 0 | 95 | 191 |
| Total Undergraduate | 324 | 611 | 742 | 10 | 19 | 16 | 477 | 63 | 4391 | 6653 |

Graduate Race/Ethnicity

| Graduate | African American | Asian | Hispanic | Native American | Native Hawaiian | NonResident Alien | Not Reported | Two or more races | White | Total |
|--|------------------|-----------|-----------|-----------------|-----------------|-------------------|--------------|-------------------|------------|------------|
| <i>School of Humanities & Social Sciences</i> | 1 | 0 | 1 | 0 | 0 | 0 | 3 | 0 | 26 | 31 |
| <i>School of Education</i> | 42 | 22 | 27 | 2 | 1 | 0 | 63 | 5 | 381 | 543 |
| <i>School of Nursing Health & Exercise Science</i> | 3 | 2 | 1 | 0 | 0 | 0 | 2 | 1 | 19 | 28 |
| <i>Non-Matriculated & Visiting</i> | 6 | 3 | 5 | 0 | 2 | 0 | 24 | 0 | 45 | 85 |
| Total Graduate | 52 | 27 | 34 | 2 | 3 | 0 | 92 | 6 | 471 | 687 |

Official 10th Day enrollment counts.

**ENROLLMENT BY GENDER – FALL 2009 - 2013
TOTAL COLLEGE**

| Undergraduate | 2009 | 2010 | 2011 | 2012 | 2013 |
|---------------|------|------|------|------|------|
| <i>Female</i> | 3657 | 3709 | 3673 | 3702 | 3802 |
| <i>Male</i> | 2580 | 2746 | 2831 | 2843 | 2851 |
| Total | 6237 | 6460 | 6504 | 6545 | 6653 |
| Graduate | 2009 | 2010 | 2011 | 2012 | 2013 |
| <i>Female</i> | 594 | 536 | 526 | 584 | 580 |
| <i>Male</i> | 149 | 119 | 122 | 141 | 107 |
| Total | 743 | 655 | 648 | 725 | 687 |

**ENROLLMENT BY GENDER – FALL 2009-2013
GRADUATE LEVEL**

| | 2009 | 2010 | 2011 | 2012 | 2013 |
|---|------|------|------|------|------|
| <i>School of Humanities & Social Sciences</i> | | | | | |
| Graduate | 28 | 36 | 28 | 31 | 31 |
| <i>Female</i> | 22 | 29 | 19 | 23 | 24 |
| <i>Male</i> | 6 | 7 | 9 | 8 | 7 |
| <i>School of Education</i> | | | | | |
| Graduate | 530 | 520 | 527 | 520 | 543 |
| <i>Female</i> | 422 | 423 | 437 | 424 | 461 |
| <i>Male</i> | 108 | 97 | 90 | 96 | 82 |
| <i>School of Nursing, Health & Exercise Science</i> | | | | | |
| Graduate | 40 | 31 | 25 | 26 | 28 |
| <i>Female</i> | 37 | 29 | 22 | 23 | 26 |
| <i>Male</i> | 3 | 2 | 3 | 3 | 2 |

Official 10th Day enrollment counts

ENROLLMENT BY GENDER – FALL 2009-2013
UNDERGRADUATE LEVEL

| | 2009 | 2010 | 2011 | 2012 | 2013 |
|---|-------------|-------------|-------------|-------------|-------------|
| School of Arts & Communications | 625 | 654 | 718 | 705 | 746 |
| <i>Female</i> | 407 | 434 | 447 | 411 | 446 |
| <i>Male</i> | 218 | 220 | 271 | 294 | 300 |
| School of Business | 1080 | 1058 | 1066 | 1139 | 1162 |
| <i>Female</i> | 463 | 435 | 429 | 466 | 453 |
| <i>Male</i> | 617 | 623 | 637 | 673 | 709 |
| School of Education | 731 | 746 | 713 | 713 | 747 |
| <i>Female</i> | 685 | 685 | 657 | 667 | 699 |
| <i>Male</i> | 46 | 61 | 56 | 46 | 48 |
| School of Engineering | 502 | 557 | 581 | 546 | 529 |
| <i>Female</i> | 102 | 116 | 125 | 122 | 127 |
| <i>Male</i> | 400 | 441 | 456 | 424 | 402 |
| School of Humanities & Social Sciences | 1629 | 1662 | 1665 | 1674 | 1718 |
| <i>Female</i> | 1027 | 1015 | 1020 | 1028 | 1085 |
| <i>Male</i> | 602 | 647 | 645 | 646 | 633 |
| School of Nursing Health & Exercise Science | 539 | 561 | 519 | 530 | 500 |
| <i>Female</i> | 392 | 403 | 374 | 382 | 363 |
| <i>Male</i> | 147 | 158 | 145 | 148 | 137 |
| School of Science | 1064 | 1141 | 1154 | 1092 | 1060 |
| <i>Female</i> | 536 | 576 | 559 | 524 | 522 |
| <i>Male</i> | 528 | 565 | 595 | 568 | 538 |
| Other Undergraduate: Non-Matriculated, Undecided, Visiting | 67 | 76 | 88 | 146 | 191 |
| <i>Female</i> | 45 | 45 | 62 | 102 | 107 |
| <i>Male</i> | 22 | 31 | 26 | 44 | 84 |

Official 10th Day enrollment Counts

**ENROLLMENT BY RESIDENCE (In-State/Out-of-State)
FALL 2009 - 2013**

| Undergraduate | 2009 | 2010 | 2011 | 2012 | 2013 |
|--|-------------|-------------|-------------|-------------|-------------|
| <i>NJ Resident</i> | 5899 | 6111 | 6143 | 6178 | 6269 |
| <i>Non-Resident</i> | 338 | 349 | 361 | 367 | 384 |
| Total | 6237 | 6460 | 6504 | 6545 | 6653 |
| Graduate | 2009 | 2010 | 2011 | 2012 | 2013 |
| <i>NJ Resident</i> | 649 | 566 | 574 | 617 | 590 |
| <i>Non-Resident</i> | 94 | 89 | 74 | 108 | 97 |
| Total | 743 | 655 | 648 | 725 | 687 |
| | 2009 | 2010 | 2011 | 2012 | 2013 |
| Undergraduate School of Arts & Communications | 625 | 654 | 718 | 705 | 746 |
| <i>NJ Resident</i> | 589 | 619 | 680 | 666 | 706 |
| <i>Non-Resident</i> | 36 | 35 | 38 | 39 | 40 |
| Undergraduate School of Business | 1080 | 1058 | 1066 | 1139 | 1162 |
| <i>NJ Resident</i> | 1037 | 1019 | 1020 | 1095 | 1114 |
| <i>Non-Resident</i> | 43 | 39 | 46 | 44 | 48 |
| Undergraduate School of Education | 731 | 746 | 713 | 713 | 747 |
| <i>NJ Resident</i> | 680 | 698 | 669 | 671 | 701 |
| <i>Non-Resident</i> | 51 | 48 | 44 | 42 | 46 |
| Undergraduate School of Engineering | 502 | 557 | 581 | 546 | 529 |
| <i>NJ Resident</i> | 473 | 529 | 546 | 508 | 482 |
| <i>Non-Resident</i> | 29 | 28 | 35 | 38 | 47 |
| Undergraduate School of Humanities & Social Sciences | 1629 | 1662 | 1665 | 1674 | 1718 |
| <i>NJ Resident</i> | 1557 | 1593 | 1582 | 1602 | 1652 |
| <i>Non-Resident</i> | 72 | 69 | 83 | 72 | 66 |
| Undergraduate School of Nursing Health & Exercise Science | 539 | 561 | 519 | 530 | 500 |
| <i>NJ Resident</i> | 505 | 522 | 481 | 492 | 459 |
| <i>Non-Resident</i> | 34 | 39 | 38 | 38 | 41 |
| Undergraduate School of Science | 1064 | 1141 | 1154 | 1092 | 1060 |
| <i>NJ Resident</i> | 994 | 1055 | 1083 | 1023 | 998 |
| <i>Non-Resident</i> | 70 | 86 | 71 | 69 | 62 |
| Other Undergraduate: Non-Matriculated, Undecided, Visiting | 67 | 80 | 88 | 146 | 191 |
| <i>NJ Resident</i> | 65 | 75 | 82 | 121 | 157 |
| <i>Non-Resident</i> | 2 | 5 | 6 | 25 | 34 |

**ENROLLMENT BY MAJOR
FALL 2010-2013**

Please use the following link to access tables that contain enrollment data for majors over the past four fall terms. The enrollment figures are for first majors only and are derived from the 10th day census date.

[Plan Enrollments by Term 2010_2013.xlsx](#)

**FIRST YEAR TO SECOND YEAR
RETENTION RATES FOR
ENTERING FIRST-TIME, FULL-TIME FRESHMAN
BY ETHNICITY
FALL 2002 – FALL 2013**

| | Fall 2002 | Fall 2003 | Fall 2004 | Fall 2005 | Fall 2006 | Fall 2007 | Fall 2008 | Fall 2009 | Fall 2010 | Fall 2011 | Fall 2012 | AVG % Retained from Group to 2nd Fall Term |
|--|-----------|-----------|-----------|-----------|-----------|-----------|-----------|-----------|-----------|-----------|-----------|--|
| <i>Total # Freshmen in Cohort</i> | 1231 | 1177 | 1227 | 1238 | 1262 | 1286 | 1295 | 1284 | 1421 | 1371 | 1363 | |
| <i>African American</i> | 89.25% | 90.77% | 92.21% | 89.77% | 93.18% | 94.74% | 91.30% | 86.32% | 87.00% | 95.24% | 90.91% | 90.97% |
| <i>Asian</i> | 100.00% | 96.30% | 92.00% | 96.97% | 97.78% | 100.00% | 96.83% | 96.64% | 96.18% | 94.71% | 94.87% | 96.57% |
| <i>Hispanic</i> | 94.19% | 93.10% | 94.00% | 97.35% | 91.37% | 93.39% | 92.19% | 91.13% | 92.05% | 92.81% | 89.47% | 92.82% |
| <i>Native American</i> | 100.00% | 100.00% | 50.00% | 0.00% | 100.00% | 100.00% | 100.00% | 66.67% | 87.50% | 83.33% | 100.00% | 80.68% |
| <i>Native Hawaiian</i> | 98.36% | 87.69% | 93.33% | 96.49% | 97.14% | 100.00% | 100.00% | 100.00% | 100.00% | 100.00% | 83.33% | 96.03% |
| <i>Not Reported</i> | 95.83% | 95.12% | 100.00% | 88.46% | 93.41% | 94.81% | 93.85% | 91.96% | 98.41% | 96.30% | 89.01% | 94.29% |
| <i>White</i> | 95.20% | 96.30% | 95.30% | 95.74% | 96.22% | 95.75% | 96.31% | 95.75% | 95.64% | 94.37% | 95.26% | 95.62% |
| <i>AVG % Retained from Cohort to 2nd Fall Term</i> | 94.96% | 95.24% | 94.87% | 94.91% | 94.85% | 94.87% | 95.29% | 94.16% | 94.79% | 94.38% | 93.84% | 93.83% |

**1st YEAR to 2nd YEAR RETENTION RATES BY SCHOOL
FALL 2002 – FALL 2012**

| School | 2002 | 2003 | 2004 | 2005 | 2006 | 2007 | 2008 | 2009 | 2010 | 2011 | 2012 |
|---|-------------|-------------|-------------|-------------|-------------|-------------|-------------|-------------|-------------|-------------|-------------|
| <i>Arts & Communication</i> | 93.10% | 94.85% | 90.00% | 94.17% | 90.48% | 94.57% | 92.66% | 96.46% | 94.52% | 95.68% | 92.14% |
| <i>Business</i> | 96.79% | 96.32% | 93.49% | 97.50% | 93.25% | 93.64% | 94.98% | 94.55% | 96.48% | 96.97% | 95.00% |
| <i>Education</i> | 97.67% | 96.82% | 96.55% | 95.90% | 99.22% | 96.53% | 96.25% | 98.65% | 94.08% | 92.75% | 96.62% |
| <i>Engineering</i> | 93.22% | 92.96% | 95.96% | 93.40% | 95.41% | 96.52% | 94.44% | 92.62% | 93.25% | 89.05% | 91.87% |
| <i>Humanities and Social Sciences</i> | 91.19% | 94.67% | 96.53% | 94.35% | 93.96% | 94.89% | 95.52% | 93.29% | 94.72% | 94.20% | 93.82% |
| <i>Nursing, Health & Exercise Science</i> | 95.12% | 90.00% | 95.77% | 94.87% | 94.81% | 93.10% | 93.98% | 92.86% | 93.64% | 93.48% | 96.23% |
| <i>Science</i> | 95.77% | 95.90% | 94.36% | 94.21% | 96.43% | 94.98% | 96.67% | 92.72% | 95.44% | 95.49% | 92.22% |
| <i>AVG % All TCNJ</i> | 94.96% | 95.24% | 94.87% | 94.91% | 94.85% | 94.87% | 95.29% | 94.16% | 94.79% | 94.38% | 93.84% |

Source: Official 10th Day enrollment freshmen cohort data

**4 YEAR, 5 YEAR & 6 YEAR
GRADUATION RATES FOR
ENTERING FIRST-TIME, FULL-TIME FRESHMAN
BY ETHNICITY & GENDER
FALL 2003 – FALL 2007 COHORTS**

| Entering Cohort Year | 2003 | 2004 | 2005 | 2006 | 2007 |
|---|-------------|-------------|-------------|-------------|-------------|
| Total Number in Cohort | 1176 | 1230 | 1236 | 1270 | 1297 |
| % Graduating within 4 Years | 73% | 71% | 74% | 72% | 73% |
| <i>Female</i> | 78 | 76 | 78 | 77 | 78 |
| <i>Male</i> | 66 | 65 | 70 | 66 | 64 |
| <i>African-American</i> | 49 | 34 | 41 | 37 | 37 |
| <i>Asian</i> | 61 | 79 | 78 | 86 | 76 |
| <i>Hispanic</i> | 63 | 64 | 58 | 58 | 58 |
| <i>Native American</i> | 100 | 0 | 0 | 100 | 100 |
| <i>Native Hawaiian/Pacific Islander</i> | 0 | 79 | 0 | 0 | 0 |
| <i>Non-Resident Alien</i> | 0 | 67 | 0 | 0 | 0 |
| <i>White</i> | 76 | 74 | 78 | 76 | 78 |
| <i>Two or More Races</i> | 0 | 0 | 92 | 0 | 100 |
| <i>Not Reported</i> | 77 | 75 | 83 | 75 | 72 |
| % Graduating within 5 Years | 84% | 84% | 85% | 85% | 83% |
| <i>Female</i> | 87 | 87 | 88 | 87 | 86 |
| <i>Male</i> | 80 | 81 | 81 | 82 | 79 |
| <i>African-American</i> | 63 | 59 | 58 | 59 | 56 |
| <i>Asian</i> | 68 | 86 | 83 | 93 | 83 |
| <i>Hispanic</i> | 71 | 76 | 77 | 72 | 71 |
| <i>Native American</i> | 100 | 0 | 0 | 100 | 100 |
| <i>Native Hawaiian/Pacific Islander</i> | 0 | 86 | 0 | 0 | 79 |
| <i>Non-Resident Alien</i> | 0 | 67 | 0 | 0 | 0 |
| <i>White</i> | 88 | 87 | 89 | 89 | 87 |
| <i>Two or More Races</i> | 0 | 0 | 92 | 0 | 87 |
| <i>Not Reported</i> | 82 | 85 | 88 | 83 | 84 |
| % Graduating within 6 Years | 86% | 86% | 87% | 87% | 85% |
| <i>Female</i> | 89 | 89 | 89 | 88 | 87 |
| <i>Male</i> | 83 | 83 | 84 | 85 | 81 |
| <i>African-American</i> | 69 | 64 | 62 | 66 | 64 |
| <i>Asian</i> | 74 | 86 | 85 | 93 | 83 |
| <i>Hispanic</i> | 76 | 81 | 79 | 77 | 76 |
| <i>Native American</i> | 100 | 0 | 0 | 100 | 100 |
| <i>Native Hawaiian/Pacific Islander</i> | 0 | 88 | 0 | 0 | 83 |
| <i>Non-Resident Alien</i> | 0 | 67 | 0 | 0 | 0 |
| <i>White</i> | 90 | 89 | 90 | 90 | 88 |
| <i>Two or More Races</i> | 0 | 0 | 92 | 0 | 100 |
| <i>Not Reported</i> | 84 | 85 | 90 | 85 | 84 |

Source: IPEDS Graduate Rate Survey freshmen cohorts

**DEGREES GRANTED BY SCHOOL AND DEGREE TYPE
2009-2014**

| School | Degree | 2009-10 | 2010-11 | 2011-12 | 2012-13 | 2013-14 |
|-----------------------------|---------------|----------------|----------------|----------------|----------------|----------------|
| Arts & Comm UGRD | BA | 91 | 88 | 112 | 98 | 118 |
| Arts & Comm UGRD | BFA | 41 | 37 | 46 | 28 | 35 |
| Arts & Comm UGRD | BM | 25 | 24 | 15 | 20 | 25 |
| Business UGRD | BA | 3 | 6 | 7 | 6 | 5 |
| Business UGRD | BS | 255 | 290 | 285 | 272 | 265 |
| Humanities & Soc. Sci GRAD | MA | 5 | 13 | 15 | 9 | 19 |
| Humanities & Soc. Sci UGRD | BA | 354 | 388 | 395 | 376 | 392 |
| Humanities & Soc. Sci UGRD | BS | 51 | 48 | 34 | 40 | 46 |
| Education GRAD | CER | 14 | 15 | 30 | 26 | 31 |
| Education GRAD | EDS | 5 | 4 | 5 | 3 | 3 |
| Education GRAD | MA | 28 | 43 | 43 | 35 | 45 |
| Education GRAD | MAT | 99 | 130 | 111 | 124 | 107 |
| Education GRAD | MED | 173 | 196 | 263 | 178 | 207 |
| Education GRAD | MS | 5 | 1 | 7 | 6 | 1 |
| Education GRAD | SCT | 91 | 98 | 102 | 86 | 111 |
| Education UGRD | BS | 165 | 178 | 162 | 171 | 166 |
| Engineering UGRD | BABM | 2 | 1 | 4 | 1 | 0 |
| Engineering UGRD | BS | 29 | 31 | 20 | 8 | 4 |
| Engineering UGRD | BSBM | 0 | 0 | 21 | 27 | 26 |
| Engineering UGRD | BSCE | 10 | 16 | 19 | 32 | 39 |
| Engineering UGRD | BSCO | 8 | 0 | 9 | 6 | 10 |
| Engineering UGRD | BSEE | 1 | 10 | 10 | 5 | 13 |
| Engineering UGRD | BSES | 0 | 0 | 0 | 3 | 3 |
| Engineering UGRD | BSME | 29 | 22 | 23 | 33 | 39 |
| Independent Studies UGRD | BA | 3 | 7 | 14 | 8 | 9 |
| Nursing, Hlth, Ex. Sci GRAD | MED | 5 | 4 | 2 | 1 | 1 |
| Nursing, Hlth, Ex. Sci GRAD | MSN | 7 | 10 | 9 | 10 | 10 |
| Nursing, Hlth, Ex. Sci GRAD | SCT | 2 | 2 | 0 | 1 | 0 |
| Nursing, Hlth Ex. Sci UGRD | BS | 73 | 84 | 72 | 63 | 63 |
| Nursing, Hlth Ex. Sci UGRD | BSN | 60 | 60 | 45 | 68 | 63 |
| Science UGRD | BA | 52 | 37 | 59 | 46 | 57 |
| Science UGRD | BS | 196 | 150 | 216 | 149 | 203 |

Source: CIE Graduation Statistics (defined by Federal IPEDS standards – July 1 through June 30).

**DEGREES GRANTED BY SCHOOL AND PROGRAM
2008 – 2013**

Use the link below to access tables containing the number of degrees awarded by School, plan and gender from 2008-09 up to 2013-14.

[TCNJ Degrees Awarded up to 2013 by Plan.xlsx](#)

**EMPLOYEES IPEDS OCCUPATIONAL CATEGORY
FALL 2013**

| Number of Staff by Employment Status and Occupational Category | | | |
|--|-----------------------------|-----------------------------|------------------|
| Fall 2013 | | | |
| Occupational Category | Reported Values | | FTE Staff |
| | # of Full-time Staff | # of Part-time Staff | |
| Total Number of Staff | 1030 | 487 | 1192 |
| Instructional Staff | 347 | 474 | 505 |
| Librarians, Curators, Archivists | 31 | 5 | 33 |
| Student & Academic Affairs and other Education Services | 67 | 1 | 67 |
| Management Occupations | 73 | 0 | 73 |
| Business & Financial Operations | 40 | 0 | 40 |
| Computer, Engineering & Science Occupations | 55 | 3 | 56 |
| Community, Social Service, Legal, Arts, Design, Entertainment, Sports and Media Occupations | 62 | 1 | 62 |
| Healthcare Practitioners & Technical Occupations | 16 | 1 | 16 |
| Service Occupations | 52 | 0 | 52 |
| Office and Administrative Support | 106 | 2 | 107 |
| Natural Resources, Construction, and Maintenance Occupations | 181 | 0 | 181 |

Source: IPEDS Human Resources Survey 2013-14

**EMPLOYEES BY GENDER
FALL 2009-2013**

| | 2009 | 2010 | 2011 | 2012 | 2013 |
|-------------------------------------|--------------|--------------|--------------|--------------|--------------|
| Faculty - Full-Time | 348 | 348 | 351 | 349 | 347 |
| Male | 175 | 176 | 176 | 175 | 175 |
| Female | 173 | 172 | 175 | 174 | 172 |
| Faculty - Part-Time/Adjuncts | 402 | 385 | 403 | 444 | 474 |
| Male | 186 | 169 | 180 | 209 | 215 |
| Female | 216 | 216 | 223 | 235 | 259 |
| Staff - Full-Time | 646 | 637 | 646 | 677 | 683 |
| Male | 301 | 290 | 298 | 302 | 310 |
| Female | 345 | 347 | 348 | 375 | 373 |
| Staff - Part-Time | 19 | 20 | 19 | 12 | 13 |
| Male | 7 | 6 | 4 | 3 | 3 |
| Female | 12 | 14 | 15 | 9 | 10 |
| Total Employees | 1,415 | 1,390 | 1,419 | 1,482 | 1,517 |
| Male | 669 | 641 | 658 | 689 | 703 |
| Female | 746 | 749 | 761 | 793 | 814 |

Source: IPEDS Human Resources Survey

**NUMBER OF FACULTY BY RANK AND TENURE STATUS
FALL 2009-FALL 2013**

| | 2009 | | | 2010 | | | 2011 | | | 2012 | | | 2013 | | |
|--------------------------------|--------------------|------------|------------|--------------------|------------|------------|--------------------|------------|------------|--------------------|------------|------------|--------------------|------------|------------|
| | Ten/ Ten Trk | Non Ten | Total | Ten/ Ten Trk | Non Ten | Total | Ten/ Ten Trk | Non Ten | Total | Ten/ Ten Trk | Non Ten | Total | Ten/ Ten Trk | Non Ten | Total |
| Full-Time: | | | | | | | | | | | | | | | |
| <i>Professor</i> | 85 | 0 | 85 | 85 | 0 | 85 | 88 | 0 | 88 | 91 | 0 | 91 | 90 | 0 | 90 |
| <i>Associate Professor</i> | 120 | 1 | 121 | 136 | 0 | 136 | 138 | 1 | 139 | 138 | 1 | 139 | 140 | 2 | 142 |
| <i>Assistant Professor</i> | 123 | 12 | 135 | 111 | 12 | 123 | 93 | 25 | 118 | 94 | 18 | 112 | 100 | 10 | 110 |
| <i>Instructor</i> | 0 | 7 | 7 | 0 | 4 | 4 | 0 | 6 | 6 | 0 | 7 | 7 | 0 | 5 | 5 |
| Total Full-Time Faculty | 328 | 20 | 348 | 332 | 16 | 348 | 319 | 32 | 351 | 323 | 26 | 349 | 330 | 12 | 347 |
| Total Part-Time Faculty | 0 | 24 | 24 | 0 | 21 | 21 | 0 | 18 | 18 | 0 | 20 | 20 | 0 | 17 | 17 |
| Grand Total | 328 | 44 | 372 | 332 | 37 | 369 | 319 | 50 | 369 | 323 | 46 | 369 | 330 | 29 | 364 |

Part-Time Faculty includes regular part-time faculty. Adjuncts are not included.

Source: EIS HR Data

**TENURE STATUS AMONG FULL-TIME TENURE TRACK FACULTY
FALL 2009-FALL 2013**

| | 2009 | | 2010 | | 2011 | | 2012 | | 2013 | |
|----------------------------|----------------------|--------------|----------------------|--------------|----------------------|--------------|----------------------|--------------|----------------------|--------------|
| | Tenured/ Eligible | % Tenured | Tenured/ Eligible | % Tenured | Tenured/ Eligible | % Tenured | Tenured/ Eligible | % Tenured | Tenured/ Eligible | % Tenured |
| Professor | 84/85 | 98.8% | 86/88 | 97.7% | 89/91 | 97.8% | 89/91 | 97.8% | 90/90 | 100% |
| Associate Professor | 129/136 | 94.9% | 120/138 | 87.0% | 113/138 | 81.9% | 113/138 | 81.9% | 136/140 | 97.1% |
| Assistant Professor | 44/111 | 39.6% | 38/93 | 40.9% | 36/94 | 38.3% | 36/94 | 38.3% | 57/100 | 57.0% |
| Grand Total | 247/328 | 75.3% | 257/332 | 77.4% | 244/319 | 76.5% | 238/323 | 73.7% | 283/330 | 85.8% |

Key: % Tenured = # Tenured/# Eligible * 100.

Note: Counts include active faculty.

Source: EIS/HR Faculty Data

**AVERAGE TOTAL COMPENSATION OF FULL-TIME FACULTY BY RANK
ACADEMIC YEAR 2009-2013**

| | 2009 | | 2010 | | 2011 | | 2012 | | 2013 | |
|--------------------------------|---------------------|---|---------------------|---|---------------------|---|---------------------|---|---------------------|---|
| | Average Comp. \$ | % Increase from Previous Year | Average Comp. \$ | % Increase from Previous Year | Average Comp. \$ | % Increase from Previous Year | Average Comp. \$ | % Increase from Previous Year | Average Comp. \$ | % Increase from Previous Year |
| Professor | \$150,825 | 1.5% | \$156,256 | 4.6% | \$159,843 | 4.2% | \$169,514 | 0.8% | \$172,536 | 2.9% |
| Associate Professor | \$120,959 | 2.5% | \$124,096 | 4.0% | \$128,570 | 5.2% | \$134,828 | 0.9% | \$137,836 | 3.2% |
| Assistant Professor | \$99,080 | 3.4% | \$101,432 | 6.3% | \$102,169 | 5.7% | \$107,742 | 0.8% | \$112,914 | 4.8% |
| Instructor | \$84,622 | -2.9% | \$101,626 | 5.2% | \$98,955 | 8.0% | \$109,801 | 0.0% | \$105,124 | 8.3% |

Note: Includes full-time faculty.

Total compensation refers to 9-month equivalent salary plus fringe benefits.

Percentage of increase from previous year includes continuing faculty salaries.

Source: CIE/AAUP Annual Survey of Faculty Compensation

STATEMENT OF OPERATING ACTIVITIES
FY 2009-2013

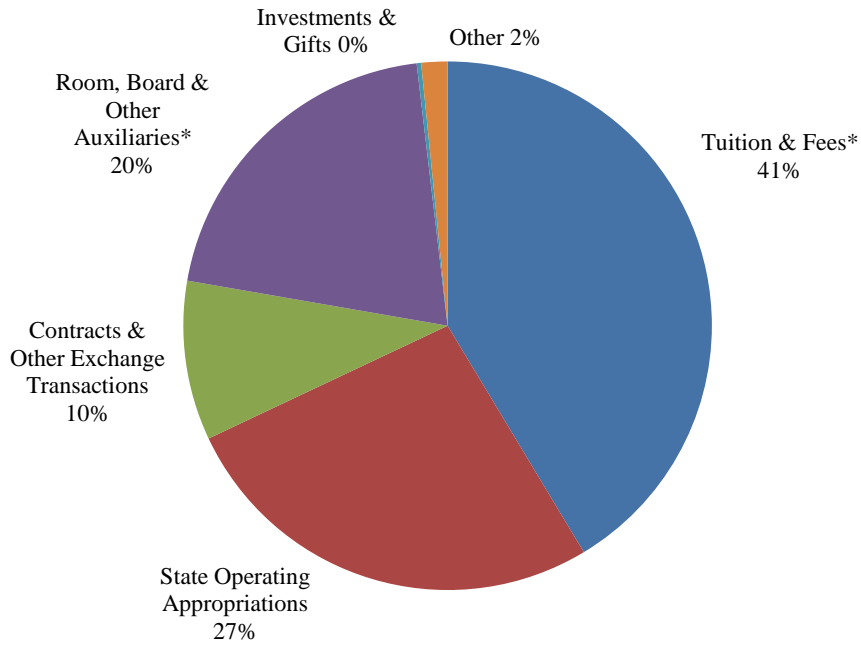
| | FY09 | FY10 | FY11 | FY12 | FY13 |
|--|----------------------|----------------------|----------------------|----------------------|----------------------|
| Operating Revenue and Additions: | | | | | |
| Tuition & Fees, net of scholarship & fellowship allowance (1) | \$72,845,000 | \$73,805,000 | \$80,349,000 | \$84,617,000 | \$88,326,000 |
| State operating appropriations | \$56,777,000 | \$54,508,000 | \$55,812,000 | \$54,408,000 | \$53,311,000 |
| Contracts & other exchange transactions | \$16,102,000 | \$17,323,000 | \$18,500,000 | \$19,937,000 | \$19,550,000 |
| Room, board & other auxiliaries, net of scholarship & fellowship allowance (1) | \$35,047,000 | \$35,767,000 | \$41,064,000 | \$41,709,000 | \$40,678,000 |
| Investments & gifts | \$1,624,000 | \$292,000 | \$448,000 | \$556,000 | \$1,448,000 |
| Other | \$5,343,000 | \$9,766,000 | \$3,487,000 | \$3,274,000 | \$3,850,000 |
| Total operating revenues and support | \$187,738,000 | \$191,461,000 | \$199,660,000 | \$204,501,000 | \$208,782,000 |
| <i>(1) Scholarship and fellowship allowance</i> | \$23,819,000 | \$25,102,000 | \$24,613,000 | \$25,685,000 | \$26,882,000 |
| Operating Expenses and Transfers: | | | | | |
| Instruction & Academic support | \$62,951,000 | \$96,606,000 | \$97,745,000 | \$101,405,000 | \$103,702,000 |
| Sponsored activities | \$12,464,000 | \$18,643,000 | \$21,228,000 | \$20,686,000 | \$21,768,000 |
| Student services | \$12,144,000 | \$18,470,000 | \$19,118,000 | \$20,705,000 | \$20,881,000 |
| Student aid | \$511,000 | \$790,000 | \$865,000 | \$902,000 | \$1,024,000 |
| Institutional Support | \$10,375,000 | \$15,876,000 | \$15,948,000 | \$16,123,000 | \$17,769,000 |
| Room, board & other auxiliaries | \$29,346,000 | \$30,486,000 | \$34,389,000 | \$33,775,000 | \$35,087,000 |
| Operation and maintenance of plant* | \$21,446,000 | \$0 | \$0 | \$0 | \$0 |
| Transfers & other | \$24,829,000 | \$3,227,000 | \$1,327,000 | \$1,289,000 | \$292,000 |
| Total operating expenses and transfers | \$174,066,000 | \$184,098,000 | \$190,620,000 | \$194,885,000 | \$200,523,000 |

Note: As of FY09-10, Operation and maintenance of plant expenses were reallocated within other areas and no longer a separate item under Expenses.

Source: CIE/IPEDS Finance Survey, GASB

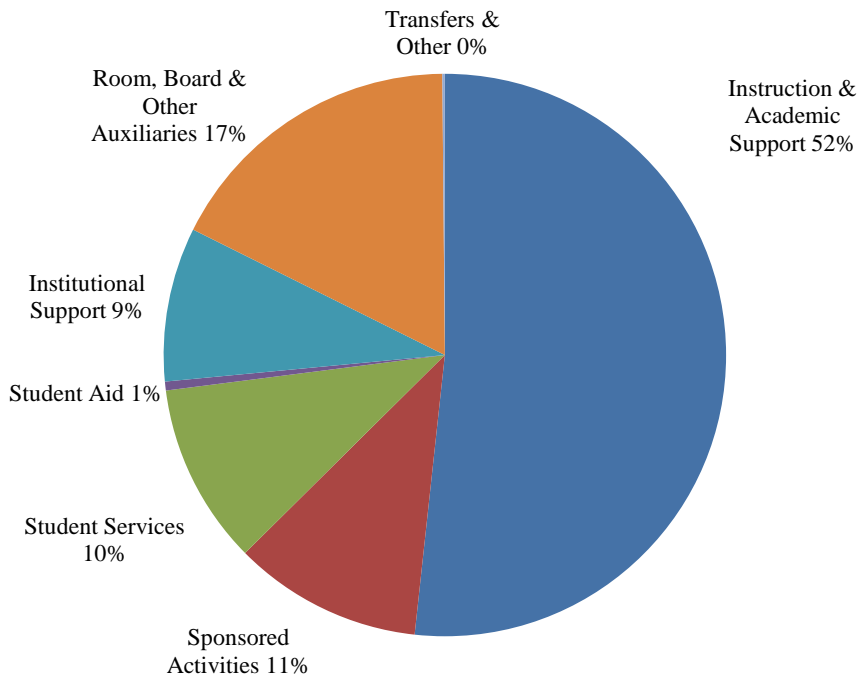
OPERATING REVENUE, EXPENSES AND TRANSFERS FISCAL YEAR 2013

REVENUE (\$208,782,000)



**Net of Scholarship & Fellowship Allowance*

EXPENSES & TRANSFERS (\$200,523,000)



Source: CIE/IPEDS Finance Survey, GASB

CHANGE IN NET ASSETS
FY 2010 - FY 2013

| | FY10 | FY11 | FY12 | FY13 |
|---|----------------------|----------------------|----------------------|----------------------|
| Assets: | | | | |
| Current Assets | \$109,631,000 | \$101,311,000 | \$95,209,000 | \$103,666,000 |
| Capital Assets, net | \$545,983,000 | \$564,959,000 | \$582,627,000 | \$592,234,000 |
| Other noncurrent assets | \$96,343,000 | \$56,043,000 | \$44,416,000 | \$34,963,000 |
| Total assets | <u>\$751,957,000</u> | <u>\$722,313,000</u> | <u>\$722,252,000</u> | <u>\$730,863,000</u> |
| Deferred Outflow | <u>\$3,580,000</u> | <u>\$28,943,000</u> | <u>\$25,052,000</u> | <u>\$23,806,000</u> |
| Liabilities: | | | | |
| Current liabilities | \$36,417,000 | \$39,116,000 | \$29,182,000 | \$38,850,000 |
| Noncurrent liabilities | \$387,119,000 | \$379,361,000 | \$375,495,000 | \$364,933,000 |
| Total liabilities | <u>\$423,536,000</u> | <u>\$418,477,000</u> | <u>\$404,677,000</u> | <u>\$403,783,000</u> |
| Net Assets: | | | | |
| Invested in capital assets, net of related debt | \$204,440,000 | \$212,893,000 | \$224,346,000 | \$229,996,000 |
| Restricted expendable | \$6,983,000 | \$4,581,000 | \$1,895,000 | \$2,298,000 |
| Unrestricted | <u>\$120,578,000</u> | <u>\$115,305,000</u> | <u>\$116,386,000</u> | <u>\$118,592,000</u> |
| Total net assets | <u>\$332,001,000</u> | <u>\$332,779,000</u> | <u>\$342,627,000</u> | <u>\$350,886,000</u> |
| <i>Percent change from prior year</i> | 2.3% | 0.2% | 3.0% | 2.4% |

Source: Treasurer's Office, TCNJ

**EXTERNALLY SPONSORED ACTIVITIES
AWARDED GRANTS – FY2013**

| Awarded - FY2013 | | |
|--|------------------------------------|-----------------------|
| SCHOOL | DEPARTMENT | TOTAL AWARDS |
| Academic Affairs | Woodrow Wilson Teaching Fellowship | \$399,164.00 |
| Art & Communications Total | Art Gallery/Sarnoff Center | \$23,950.00 |
| School of Business Total | SBDC | \$198,985.00 |
| Community Centers | Bonner Center | \$1,054,051.00 |
| | NJ Sustainable Self Institute | \$871,866.00 |
| Community Centers Total | | \$1,925,717.00 |
| Education | CATIES | \$381,563.00 |
| | Ctr for Future Educators | \$645,000.00 |
| | CSCD | \$815,604.00 |
| School of Education Total | | \$1,842,167.00 |
| Engineering | Civil Engineering | \$71,370.00 |
| Engineering | Electrical Engineering | \$44,023.00 |
| Engineering | Mechanical Engineering | \$10,000.00 |
| Engineering | Tech Studies - STEM | \$524,719.00 |
| School of Engineering Total | | \$650,112.00 |
| Humanities & Social Sciences | History | \$173,108.00 |
| Humanities & Social Sciences | World Lang. & Cultures | \$326,828.00 |
| Humanities & Social Sciences | Ctr for Global Engagement | \$10,000.00 |
| School of Humanities & Social Sciences Total | | \$509,936.00 |
| School of Nursing Health & Exercise Total | Nursing | \$78,013.00 |
| Science | Biology | \$410,175.00 |
| Science | Chemistry | \$85,000.00 |
| | Computer Science | \$156,894.00 |
| | Physics | \$151,977.00 |
| School of Science Total | | \$804,046.00 |
| Total Student Life | ADEP | \$78,500.00 |
| College of New Jersey Total | | \$6,510,590.00 |

Source: Director of Grants

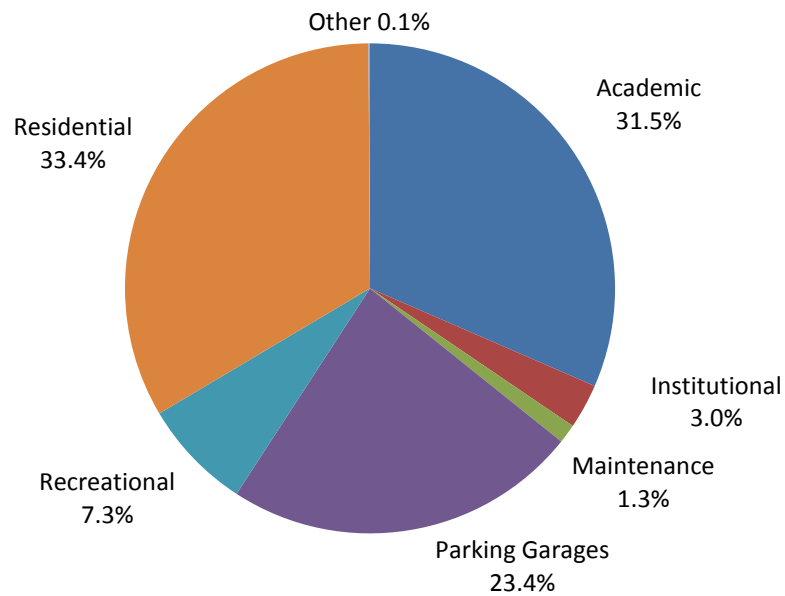
**UNDERGRADUATE TUITION, FEES, ROOM AND BOARD CHARGES AND ANNUAL RATE OF INCREASE,
ACADEMIC YEARS 2003-04 UP TO 2013-14**

| Year | Tuition | | | | Fees | | Room & Board | |
|----------------|---------------|-------------|---------------|-------------|--------------|-------------|---------------|-------------|
| | Resident | | Non-Resident | | \$ | % Increase | \$ | % Increase |
| | \$ | % Increase | \$ | % Increase | | | | |
| 2003-04 | 6,131 | 9.0% | 10,706 | 9.0% | 2,075 | 14.1% | 7,744 | 4.0% |
| 2004-05 | 6,621 | 8.0% | 11,562 | 8.0% | 2,497 | 20.3% | 8,093 | 4.5% |
| 2005-06 | 7,051 | 6.5% | 12,314 | 6.5% | 2,806 | 12.4% | 8,458 | 4.5% |
| 2006-07 | 7,615 | 8.0% | 14,161 | 15.0% | 2,938 | 4.7% | 8,843 | 4.6% |
| 2007-08 | 8,072 | 6.0% | 15,295 | 8.0% | 3,235 | 10.1% | 9,242 | 4.5% |
| 2008-09 | 8,718 | 8.0% | 16,825 | 10.0% | 3,590 | 11.0% | 9,612 | 4.0% |
| 2009-10 | 8,980 | 3.0% | 17,666 | 5.0% | 3,742 | 4.2% | 9,996 | 4.0% |
| 2010-11 | 9,340 | 4.0% | 18,726 | 6.0% | 3,953 | 5.6% | 10,358 | 3.6% |
| 2011-12 | 9,760 | 4.5% | 19,569 | 4.5% | 4,127 | 4.4% | 10,677 | 3.1% |
| 2012-13 | 10,102 | 3.5% | 20,254 | 3.5% | 4,276 | 3.6% | 10,998 | 3.0% |
| 2013-14 | 10,355 | 2.5% | 20,760 | 2.5% | 4,375 | 2.3% | 11,350 | 2.5% |

Source: CIE/Common Data Set

CAMPUS BUILDING INVENTORY 2013-14

| | SqFt.% | Sq.Ft. | #Buildings |
|-------------------------------|---------------|------------------|------------|
| Academic | 31.5% | 1,080,368 | 14 |
| Institutional | 3.0% | 104,148 | 2 |
| Maintenance | 1.3% | 43,111 | 3 |
| Parking Garages | 23.4% | 803,684 | 5 |
| Recreational | 7.3% | 248,753 | 5 |
| Residential | 33.4% | 1,147,121 | 15 |
| Other | 0.1% | 3,055 | 1 |
| Total Campus Buildings | 100.0% | 3,430,240 | 45 |



Source: CIE

THE COLLEGE OF NEW JERSEY LIBRARY

Facilities and Services

The College of New Jersey Library, provides high-quality information resources, expertise and a learning environment that enhance the search for knowledge and understanding. The Library serves as an intellectual, cultural and social center for the College, empowering TCNJ community members to become self-directed, lifelong learners and responsible citizens.

The five-story, 135,000 square-foot facility, in addition to housing the traditional library collections and services, provides 26 group study rooms, a café, a late-night study area, and a 105-seat multi-purpose auditorium.

TCNJ Library Collections:

Archives: Materials documenting the college's history, dating from the Normal School era in the mid-1800's to the present. Materials range from early annual reports and a historic textbook collection, through college publications, to photographs, slides, and memorabilia.

Children's/Young Adults Collection: This specialized area of over 28,000 titles contains many award winning fiction and non-fiction resources for young people from preschool age through senior high school. Included are reference materials for school age students including: folk tales, poetry, subject guides to picture books, bibliotherapy, selected summaries, review sources and encyclopedias.

Curriculum & K-12 Elementary – High School Texts Collections: The Curriculum Reference Collection contains several thousand curriculum guides on microfiche from the Kraus Curriculum Development Library. Behavior objective guides by subject, multiple titles in the series, *Educators Guide to Free Materials*, and Scope and Sequence charts.

General Collection: The General Collection consists of more than 562,000 books that have been selected by faculty and subject specialist librarians to support course offerings of the college and to provide a broad representative collection of titles across many disciplines. This growing collection includes fiction, non-fiction, and children's/youth books.

Music & Media: The library's Music and Media Collections consist of ca. 7,500 volumes of printed music, ca. 21,000 sound recordings in LP and CD format, and ca. 13,000 video recordings in DVD, VHS and U-Matic formats.

Periodicals: The library has access to over 30,000 periodical titles, which are available in a variety of formats: print, online, and microfilm/microfiche.

Reference: The Reference Collection numbers approximately 11,000 volumes and includes general encyclopedias, almanacs, dictionaries, atlases, and the like, as well as a large collection of subject specific reference works.

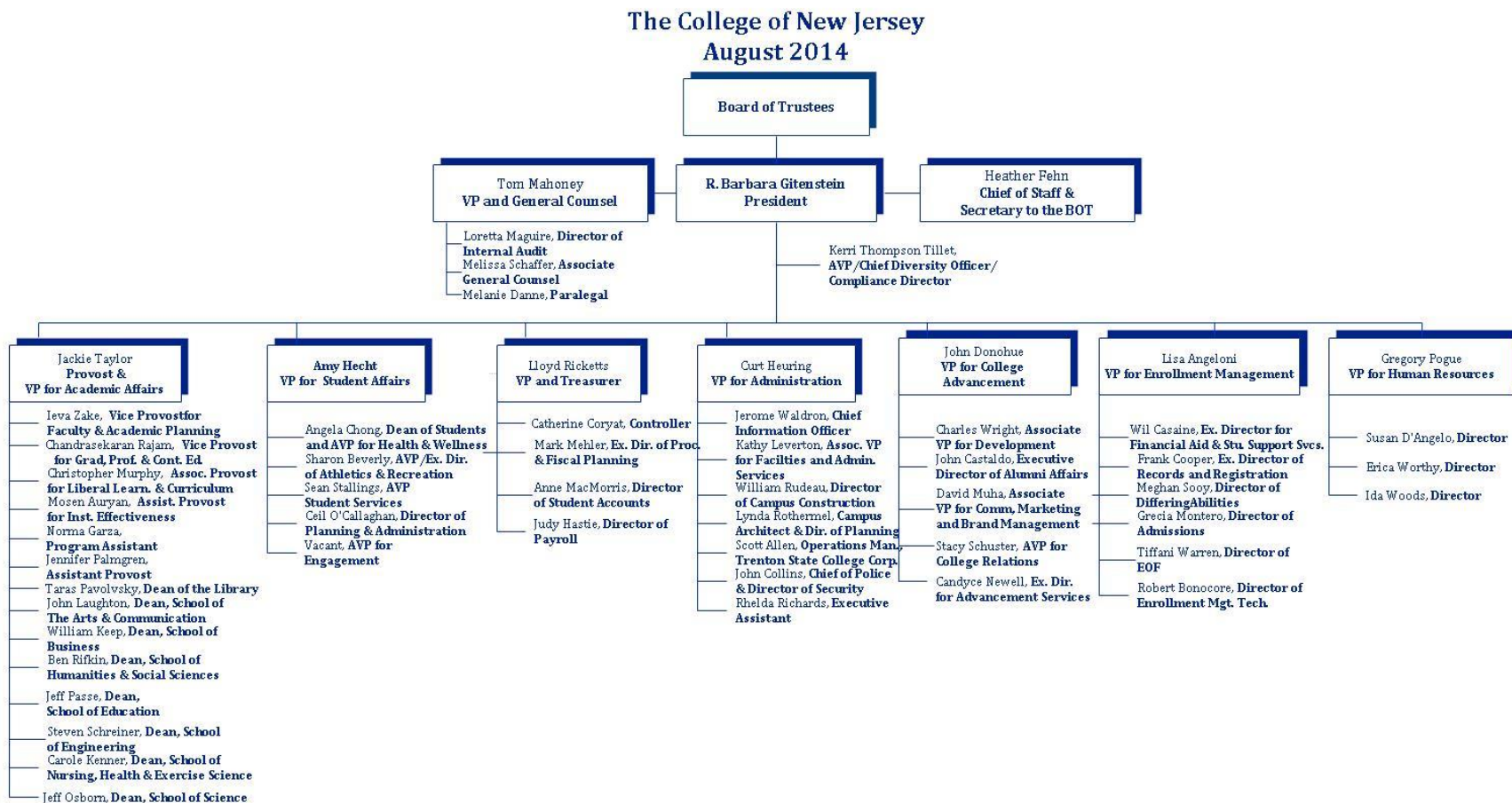
Library Holdings (2012):

| | |
|--|---------|
| Books, serial backfiles, and government documents : _____ | 694,144 |
| <i>(including bound periodicals & newspapers)</i> | |
| Current serial subscriptions: _____ | 73,733 |
| <i>(paper, microform & electronic titles)</i> | |
| Microforms (units): _____ | 426,253 |
| Video and audio (units): _____ | 40,127 |
| Online electronic database access: _____ | 165 |

**THE COLLEGE OF NEW JERSEY
REGIONAL, NATIONAL, AND SPECIALIZED ACCREDITORS**

Accreditation Board for Engineering and Technology (ABET)
American Chemical Society (ACS)
Association to Advance Collegiate Schools of Business (AACSB)
Association of Small Business Development Centers (SBDC)
Commission on Collegiate Nursing (CCNE)
Computing Accreditation Commission of Accreditation Board for Engineering and Technology (CAC)
Council on Education of the Deaf (CED)
Council for Accreditation of Counseling & Related Education Programs (CACREP)
Engineering Accreditation Commission of Accreditation Board for Engineering and Technology (EAC)
Middle States Commission on Higher Education (MSCHE)
National Association of Schools of Music (NASM)
National Council for Accreditation of Teacher Education (NCATE)
National League for Nursing Accreditation Commission (NLNAC)

ADMINISTRATIVE ORGANIZATIONAL CHART 2014



MEMBERS OF THE BOARD OF TRUSTEES

AS OF SEPTEMBER 2014

Ex-Officio Members

R. Barbara Gitenstein, *President, Ex-Officio*

Officers of the Board

Christopher R. Gibson, Esq., *Chair*

Bradley S. Brewster, *Vice Chair*

Jorge A. Caballero, *Secretary*

Appointed Members

Robert A. Altman

Miles Powell II

Eleanor V. Horne

Albert M. Stark

Rosie Hymerling

Susanne Svizeny

Frederick Keating

Treby Williams

Brian Markison

Joshua M. Zeitz

Student Members

Matthew Wells, *Student Trustee*

Ryan Boyne, *Alternate Student Trustee*

Equal Employment Opportunity & Diversity/Affirmative Action

The College of New Jersey is committed to equal opportunity, affirmative action and diversity. The College values diversity and is actively engaged in enriching the diversity of its faculty, staff and students. Central to the College's mission is creating a climate that is inclusive and respectful to everyone on campus. The College of New Jersey does not discriminate on the basis of race, creed, color, national origin, nationality, ancestry, age, sex/gender (including pregnancy), marital status, civil union status, domestic partnership status, familial status, religion, affectional or sexual orientation, gender identity or expression, atypical hereditary cellular or blood trait, genetic information, liability for service in the Armed Forces of the United States, or disability.