



Facts & Institutional Figures

Center for Institutional Effectiveness

A 3D graphic consisting of several overlapping, semi-transparent blue and grey rectangular blocks arranged in a row. The text "2014 - 2015" is centered on the front face of the middle block.

2014 - 2015

The College of New Jersey

Facts & Institutional Figures

Prepared By:

The Center for Institutional Effectiveness

Mosen Auryan

Associate Provost for Institutional Effectiveness

auryanm@tcnj.edu

Marie Tuscano

Assistant Director of Institutional Research

tuscano@tcnj.edu

LaMont Rouse

Assistant Director of Assessment

rousel@tcnj.edu

Jennifer Sizoo

Research Analyst

sizoo@tcnj.edu

Telephone: 609/771-2801 Fax: 609/637-5136

Center for Institutional Effectiveness Homepage: <http://cie.pages.tcnj.edu>

Contents

<i>Mission & Vision</i>	4
<i>At A Glance</i>	5
<i>SYNOPSIS OF UNDERGRADUATE DEGREE PROGRAMS AND MAJORS</i>	7
<i>SYNOPSIS OF GRADUATE DEGREE PROGRAMS AND MAJORS</i>	9
<i>TOP 20 MOST POPULAR UNDERGRADUATE MAJORS</i>	11
<i>AVERAGE SCHOLASTIC APTITUDE TEST SCORES BY ADMIT TYPE FOR FIRST-TIME FRESHMAN</i>	12
<i>FIRST-TIME FRESHMAN ADMISSIONS ACTIVITY</i>	13
<i>DISTRIBUTION OF COMPLETED ADMISSIONS APPLICATIONS AND ACCEPTED OFFERS</i>	14
<i>ENROLLMENT BY SCHOOL AND ATTENDANCE STATUS</i>	15
<i>TRENDS IN TOTAL ENROLLMENT</i>	17
<i>ETHNICITY OF STUDENTS</i>	18
<i>COLLEGE ENROLLMENT BY GENDER</i>	20
<i>UNDERGRADUATE ENROLLMENT BY GENDER AND RESIDENCE STATUS</i>	21
<i>ENROLLMENT BY MAJOR</i>	23
<i>1st TO 2nd YEAR RETENTION FOR ENTERING FIRST-TIME, FULL-TIME FRESHMEN BY SCHOOL AND ETHNICITY</i>	25
<i>GRADUATION RATES FOR ENTERING FIRST-TIME, FULL-TIME FRESHMAN ETHNICITY AND GENDER</i>	25
<i>DEGREES GRANTED BY SCHOOL, DEGREE TYPE AND MAJOR</i>	26
<i>EMPLOYEES BY ETHNICITY AND IPEDS OCCUPATIONAL CATEGORY</i>	28
<i>EMPLOYEES BY GENDER</i>	29
<i>NUMBER OF FACULTY BY RANK AND TENURE STATUS</i>	30
<i>TENURE STATUS AMONG FULL-TIME TENURE TRACK FACULTY</i>	31
<i>AVERAGE TOTAL COMPENSATION OF FULL-TIME FACULTY BY RANK</i>	32
<i>STATEMENT OF OPERATING ACTIVITIES</i>	33
<i>OPERATING REVENUE, EXPENSES AND TRANSFERS</i>	34

<i>CHANGE IN NET ASSETS</i>	<i>36</i>
<i>EXTERNALLY SPONSORED ACTIVITIES</i>	<i>37</i>
<i>UNDERGRADUATE TUITION, FEES, ROOM AND BOARD CHARGES PER YEAR AND ANNUAL RATE OF INCREASE</i>	<i>38</i>
<i>BUILDING INVENTORY</i>	<i>39</i>
<i>COLLEGE LIBRARY</i>	<i>40</i>
<i>THE COLLEGE OF NEW JERSEY REGIONAL, NATIONAL, AND SPECIALIZED ACCREDITORS</i>	<i>41</i>
<i>ADMINISTRATIVE ORGANIZATION CHART</i>	<i>43</i>
<i>BOARD OF TRUSTEES</i>	<i>44</i>



Mission & Vision

MISSION STATEMENT

The College of New Jersey, founded in 1855 as the New Jersey State Normal School, is primarily an undergraduate and residential college with targeted graduate programs. TCNJ's exceptional students, teacher-scholars, staff, alumni, and board members constitute a diverse community of learners, dedicated to free inquiry and open exchange, to excellence in teaching, creativity, scholarship, and citizenship, and to the transformative power of education in a highly competitive institution. The College prepares students to excel in their chosen fields and to create, preserve and transmit knowledge, arts, and wisdom. Proud of its public service mandate to educate leaders of New Jersey and the nation, the College will be a national exemplar in the education of those who seek to sustain and advance the communities in which they live.

GUIDING PRINCIPLES

The College of New Jersey affirms the following Core Beliefs as fundamental to its Mission:

- The College comprises a caring, friendly, and respectful community where the contributions of students, faculty, staff and alumni are valued and recognized.
- The College provides a seamless, engaging educational environment characterized by academic freedom, creative expressions, critical thinking, intellectual inquiry, and service learning.
- The College's faculty and staff take pride in offering a personal educational experience to every undergraduate and graduate student.
- The College's cultural, social, and intellectual life are enriched and enlivened by diversity.
- The College provides facilities, programs, services, and amenities that enhance opportunities for formal and informal interaction in a living-learning environment.
- The College promotes wellness and fosters the development of the whole person.
- The College embraces its heritage and is committed to reevaluating its mission in response to the changing needs of society.
- The College prepares its students to be successful, ethical, and visionary leaders in a multicultural, highly technological, and increasingly global world.
- The College believes that an educated individual possesses an understanding of his or her own culture, an appreciation of other cultures, and the capacity to facilitate genuine cross-cultural interaction.
- The College regards education in the service of human welfare as its chief end.



At A Glance

HISTORY/LOCATION

1855 New Jersey State Normal School
 1908 New Jersey State Normal School at Trenton
 1929 New Jersey State Teachers College and State Normal School at Trenton
 1937 New Jersey State Teachers College at Trenton
 1958 Trenton State College
 1996 The College of New Jersey

The College of New Jersey (TCNJ) is a highly selective institution that has earned national recognition for its commitment to excellence. TCNJ currently is ranked as one of the 75 “Most Competitive” schools in the nation by Barron’s Profiles of American Colleges, is rated the No. 1 public institution in the northern region of the country by U.S. News & World Report, and is considered a “best buy” in higher education by both Barron’s and Kiplinger’s Personal Finance. TCNJ was also awarded, in 2006, a Phi Beta Kappa chapter, an honor shared by less than 10 percent of colleges and universities nationally.

The College of New Jersey’s academic tradition reaches back to 1855 when it was established by the state legislature as the New Jersey State Normal School. It was the first teacher training school in the state and the ninth in the nation. Governor Rodman Price, sometimes called the founder of the New Jersey Normal School, promoted the idea of a training institute for New Jersey’s teachers and mobilized support among influential state leaders.

Originally located on Clinton Avenue in Trenton, the Normal School flourished in the latter 1800s, expanding both its academic offerings and physical facilities. In 1925, the first four-year baccalaureate degree program was established. This change marked the beginning of TCNJ’s transition from a normal school to a teachers’ college and was accompanied by a change in physical surroundings. In 1928, a beautiful 210-acre tract of land in Ewing Township was purchased as a new site for the College.

Graduate study was instituted at the College in 1947, and accreditation from various national associations was forthcoming in the 1950s. The enactment of the Higher Education Act of 1966 paved the way for TCNJ to become a multipurpose institution by expanding its degree programs into a variety of fields other than education. By 1972, seventy percent of entering students were selecting non-teaching majors.

In the 1970s, a period of declining enrollments nationwide, the College made a decision to raise, rather than lower, its already high standards. Since that time, the academic profile of entering classes has continued to rise and as a result, the College has become one of the most competitive schools of its kind

in the nation. Today the College provides academically prepared students with a challenging undergraduate education and a rewarding residential experience, small classes, and a prestigious faculty.

ACADEMIC SCHOOLS, PROGRAMS AND DEGREES

The College of New Jersey emphasizes the undergraduate experience. A strong liberal arts core forms the foundation for a wealth of degree programs offered through TCNJ's seven schools—Arts & Communication; Business; Humanities & Social Sciences; Education; Science; Nursing, Health, & Exercise Science; and Engineering. The College is enriched by an honors program and extensive opportunities to study abroad, and its award-winning First-Year Experience and freshman orientation programs have helped make its retention and graduation rates among the highest in the country.

CAMPUS

Known for its natural beauty, the College's campus is set on 289 tree-lined acres in suburban Ewing Township. The College has 39 major buildings, including a state-of-the-art library; 14 residence halls that accommodate 3,600 students; an award-winning student center; more than 20 academic computer laboratories; a full range of laboratories for nursing, microscopy, science, and technology; a music building with a 300-seat concert hall; and a collegiate recreation and athletic facilities complex. TCNJ has a full-time undergraduate enrollment of approximately 6,200 students (95 percent from New Jersey).

STUDENT LIFE

The College of New Jersey encourages students to expand their talents and skills through more than 150 organizations that are open to students. These groups range from performing ensembles and professional and honor societies to student publications, Greek organizations, as well as intramural and club sports. The College also offers numerous leadership opportunities through the Student Finance Board, Student Government Association, and Residence Hall Government to name a few.

ATHLETICS

High achievement and scholarship in the classroom have been mirrored by the success of The College of New Jersey's varsity student-athletes. Since the 1978–79 Lion wrestling team captured the College's first National Collegiate Athletic Association (NCAA) team championship, TCNJ has established itself as one of the nation's most successful Division III (non-athletic scholarship) programs. Since 1979, The College of New Jersey has amassed a total of 39 Division III crowns in six different sports. In addition, the Lions have posted 32 runner-up awards, giving the College an aggregate of 71 first- and second-place finishes. That figure is tops among the nation's 400-plus Division III colleges and universities during the past 30 years. The Lions have also produced 54 Division III CoSIDA Academic All-Americans.

As impressive as the overall athletic record is, TCNJ's accomplishment as a leader in women's sports is even greater. Since NCAA Championships were initiated for women in 1981, only TCNJ has won 32 Division III team championships. The total does not include the Lions' lacrosse championship in 1981 or the softball championships in 1980 and 1981, which were sponsored by the AIAW (Association for Intercollegiate Athletics for Women) prior to women's sports inclusion in the NCAA. In the fall of 1999, TCNJ's women's athletic program was voted as the top Division III institution for female student-athletes by *Sports Illustrated for Women*.

SYNOPSIS OF UNDERGRADUATE DEGREE PROGRAMS AND MAJORS

College-Wide Programs	Self-Designed Major	BA
School of the Arts & Communication	Art Education	BA
	Art History	BA
	Communication Studies	BA
	Digital Arts	BFA
	Fine Arts	BFA
	Graphic Design	BFA
	Interactive Multimedia	BA
	Music (options available in Performance and Teacher Preparation)	BA, BM
School of Business	Accountancy	BS
	Business Administration (specializations in Finance, Interdisciplinary Business, International Business, Management, Marketing)	BS
	Economics (options available in Secondary Education and 7 Year Medical)	BA, BS
School of Education	Early Childhood Education (Special Education & Deaf and Hard of Hearing options)**	BS
	Education of the Deaf and Hard of Hearing/Elementary Education**	BS
	Elementary Education**	BS
	Special Education/Elementary Education**	BS
	Urban Education **	BS
**non-certification at the baccalaureate level; 5 year dual certification at the master's level		
School of Engineering	Biomedical Engineering (7 Year Medical option)	BSBME
	Civil Engineering	BSCE
	Computer Engineering	BSCoE
	Electrical Engineering	BSEE
	Engineering Science (specializations in Engineering Management; 7 Year Medical option)	BS
	Mechanical Engineering	BSME
	Technological Studies (options available in iSTEM Education and Technology/Pre-Engineering Education)	BS
School of Humanities & Social Sciences	Criminology	BA
	English*** (options available in Journalism and Professional Writing)	BA
	History***	BA

	International Studies	BA
	Philosophy **	BA
	Political Science	BA
	Psychology	BA
	Sociology	BA
	Spanish***	BA
	Women's and Gender Studies	BA
** option in 7 Year Medical Programs *** options in Secondary Education and 7 Year Medical Programs		
School of Nursing, Health, and Exercise Science	Health and Exercise Science (option available in Teacher Preparation)	BS
	Nursing	BSN
School of Science	Biology*	BS
	Chemistry*	BS
	Computer Science	BS
	Mathematics* (option available in Statistics)	BA
	Physics*	BS
*options available in Secondary Education and 7 Year Medical Programs		

Key	
BA	Bachelor of Arts
BFA	Bachelor of Fine Arts
BM	Bachelor of Music
BS	Bachelor of Science
BABME	Bachelor of Arts in Biomedical Engineering
BSCE	Bachelor of Science in Civil Engineering
BSCoE	Bachelor of Science in Computer Engineering
BSEE	Bachelor of Science in Electrical Engineering
BSE	Bachelor of Science in Engineering
BSME	Bachelor of Science in Mechanical Engineering
BSN	Bachelor of Science in Nursing

SYNOPSIS OF GRADUATE DEGREE PROGRAMS AND MAJORS

Educational Specialist	Marriage and Family Counseling	EDS
Master of Arts	School Counseling	MA
	Clinical Mental Health Counseling	MA
	Marriage, Couples and Family Counseling and Therapy	MA
	English	MA
Master of Arts in Teaching	Elementary Education (Leads to Certification)	MAT
	Early Childhood (Leads to Certification) Program A (no prior teaching certificate) Program B (already P-3 certified through alternate route)(For information please contact Dr. Jody Eberly)	MAT
	MAT Early Childhood: Urban (available only to graduates of TCNJ's undergraduate portion of this program) MAT Elementary: Urban (available only to graduates of TCNJ's undergraduate portion of this program)	MAT
	Education of the Deaf and Hard of Hearing (available only to graduates of TCNJ's undergraduate portion of this program)	MAT
	Secondary Education- English (Leads to Certification)	MAT
	Secondary Education- Social Studies (Leads to Certification)	MAT
	Secondary Education- Mathematics (Leads to Certification)	MAT
	Secondary Education- Biology or Physical Science (Leads to Certification)	MAT
	Secondary Education-Technology Education (For information, please contact Dr. John Karsnitz .) 2009-2010 Planner	MAT
	Secondary Education- Health and Physical Education (This program is not currently accepting applications.)	MAT
	Special Education (Leads to Certification) Alternate Route to Special Education Certification Program	MAT
	Elementary Education (Leads to Certification)	MAT
	Special Education (Leads to Certification) (available only to graduates of TCNJ's undergraduate portion of this program)	
Master of Education	Teaching English as a Second Language	MED
	Reading (Leads to Certification)	MED

	Educational Leadership: Instruction	MED
	Educational Leadership (Leads to Certification) – traditional program	MED
	Educational Leadership (Leads to Certification) – immersion program	MED
	Special Education (Must be Certified in Special Education)	MED
	Special Education (Must be Certified in Other Area)	MED
	Special Education- Teacher of Students with Blindness or Visual Impairment (Must be Certified)	MED
Master of Science in Nursing	Family Nurse Practitioner	MSN
	Family Nurse Practitioner (for Certified NPs)	MSN
	Adult-Gerontological Nurse Practitioner	MSN
	Neonatal Nurse Practitioner Planner 2008-2009	MSN
	Clinical Nurse Leader *Program recently highlighted in Advance for Nurses.	MSN
	Bridge to the Master of Science in Nursing for RNs (not available for school nursing)	MSN
	School Nurse	MSN

**20 MOST POPULAR UNDERGRADUATE MAJORS
FALL 2014**

Rank	Major
1	Psychology
2	Biology
3	Communication Studies
4	Nursing
5	Finance
6	Elementary Education
7	Accountancy
8	Marketing
9	Criminology Studies
10	Management
11	English
12	Health and Exercise Science
13	Political Science
14	Special Education
15	Mathematics
16	Interactive Multimedia
17	Computer Science
18	Biomedical Engineering
19	History
20	Mechanical Engineering

Note: Counts are based on first major enrollment only.

SOURCE: CIE Enrollment data

**AVERAGE SCHOLASTIC APTITUDE TEST SCORES BY ADMIT TYPE FOR FIRST-TIME
FRESHMAN
FALL 2014**

SAT Critical Reading Scores	
Regular Admits	607
EOF Admits	501
All Admits	595
National Average	497
SAT Mathematics Scores	
Regular Admits	631
EOF Admits	535
All Admits	621
National Average	513
SAT Writing Scores	
Regular Admits	614
EOF Admits	493
All Admits	602
National Average	487

Source: TCNJ Center for Institutional Effectiveness/College Board

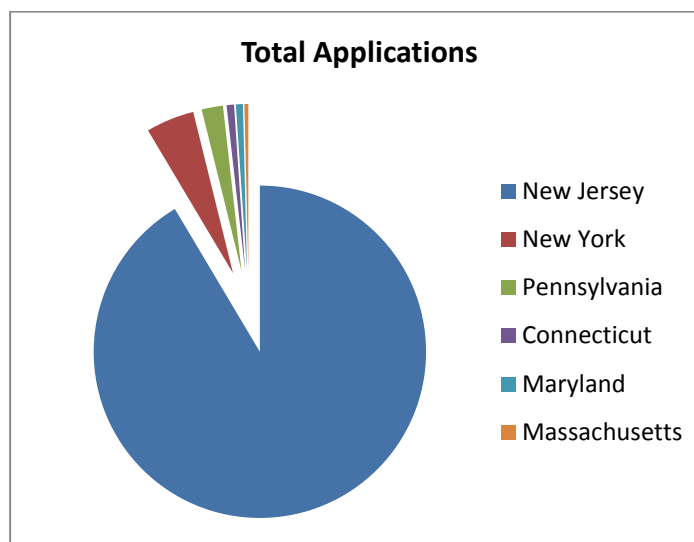
**FIRST-TIME FRESHMAN ADMISSIONS ACTIVITY
FALL 2014**

	Total Applications	Offered Admission	Offer Rate	Offer Accepted	Yield
All Students Total	10937	5356	48.97%	1417	26.5%
NJResidents Total	9659	4555	47.16%	1340	29.4%
NonResident Total	1279	801	62.63%	77	9.6%

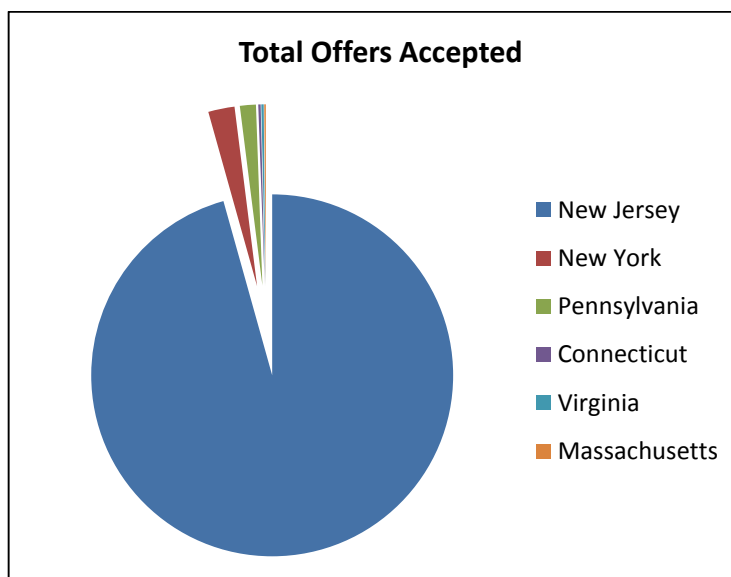
Source: TCNJ Center for Institutional Effectiveness

**DISTRIBUTION OF COMPLETED ADMISSIONS APPLICATIONS AND ACCEPTED OFFERS
FIRST-TIME FRESHMAN FROM SELECT STATES
FALL 2014**

State	Total Applications	% of Total
New Jersey	9772	89.40%
New York	501	4.60%
Pennsylvania	221	2.00%
Connecticut	77	0.70%
Maryland	73	0.60%
Massachusetts	41	0.40%
California	28	0.30%
Illinois	25	0.20%
Delaware	17	0.20%
Virginia	14	0.10%
Total – All Applicants	10936	100%



State	Offers Accepted	% of Total
New Jersey	1343	89.40%
New York	33	4.60%
Pennsylvania	20	2.00%
Connecticut	3	0.70%
Virginia	3	0.60%
Massachusetts	2	0.40%
Maryland	2	0.30%
New Hampshire	2	0.20%
Delaware	1	0.20%
California	1	0.10%
Total All Enrolled	1417	100%



CIE fall 2014 Admissions data

ENROLLMENT BY SCHOOL AND ATTENDANCE STATUS FALL 2010-2014

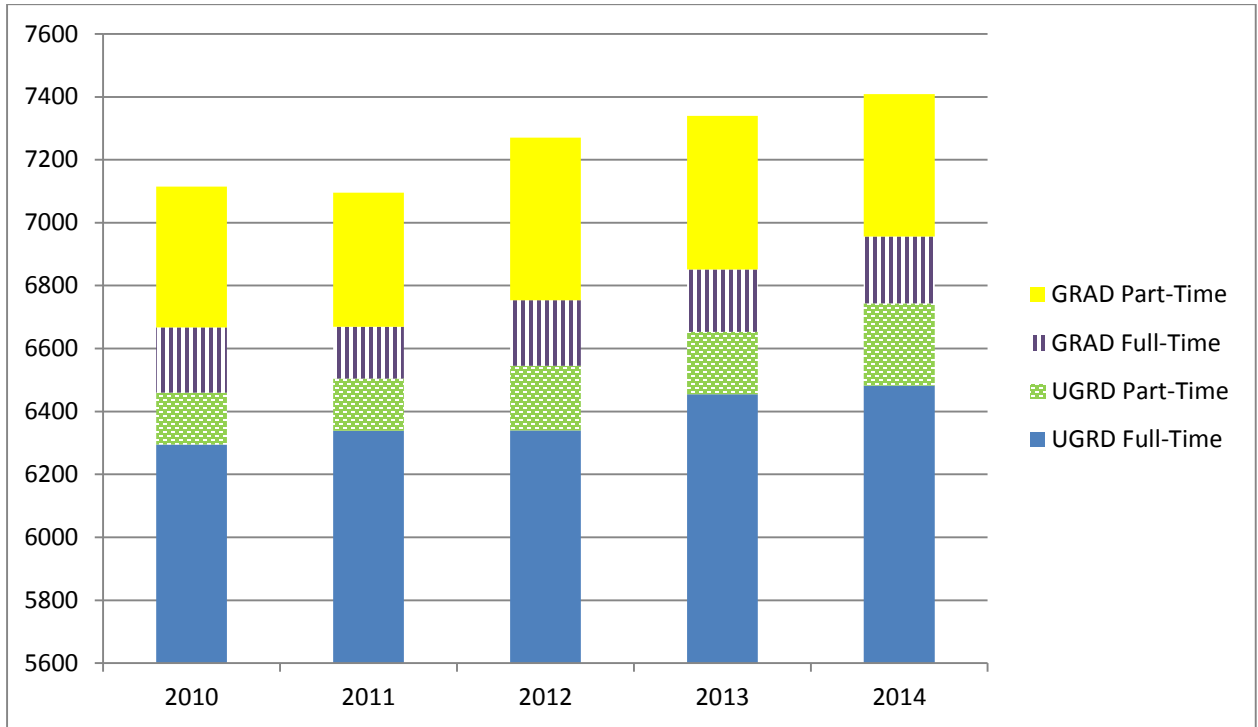
	2010	2011	2012	2013	2014
College Total	7155	7152	7270	7340	7409
<i>Full-Time</i>	6502	6561	6549	6653	6695
<i>Part-Time</i>	613	591	721	687	714
Undergraduate Total	6460	6504	6545	6653	6743
<i>Full-Time</i>	6295	6339	6340	6455	6482
<i>Part-Time</i>	165	165	205	198	261
Graduate Total	655	648	725	687	666
<i>Full-Time</i>	207	165	209	198	213
<i>Part-Time</i>	448	426	516	489	453
School of Arts & Communications	654	718	705	746	721
<i>Undergraduate</i>	654	718	705	746	721
<i>Full-Time</i>	637	15	17	728	702
<i>Part-Time</i>	17	703	688	18	19
School of Business	1059	1066	1139	1162	1219
<i>Undergraduate</i>	1059	1066	1139	1162	1219
<i>Full-Time</i>	1039	1045	1123	1145	1186
<i>Part-Time</i>	20	21	16	17	33
School of Humanities & Social Sciences	1698	1693	1705	1749	1745
<i>Undergraduate</i>	1662	1665	1674	1718	1719
<i>Full-Time</i>	1612	1621	1616	1660	1671
<i>Part-Time</i>	50	44	58	58	48
<i>Graduate</i>	36	28	31	31	26
<i>Full-Time</i>	6	7	7	11	5
<i>Part-Time</i>	30	21	24	20	21
School of Education	1303	1240	1233	1290	1262
<i>Undergraduate</i>	746	713	713	747	766
<i>Full-Time</i>	740	704	699	737	759
<i>Part-Time</i>	6	9	14	10	7

<i>Fall Enrollment Continued</i>	2010	2011	2012	2013	2014
<i>Graduate</i>	520	527	520	543	496
<i>Full-Time</i>	190	211	197	180	196
<i>Part-Time</i>	330	316	323	363	300
<i>School of Engineering</i>	557	581	546	529	525
<i>Undergraduate</i>	557	581	546	529	525
<i>Full-Time</i>	544	571	541	523	520
<i>Part-Time</i>	13	10	5	6	5
<i>School of Nursing, Health & Exercise Science</i>	592	544	553	528	540
<i>Undergraduate</i>	561	519	530	500	514
<i>Full-Time</i>	543	508	515	482	481
<i>Part-Time</i>	18	11	15	18	33
<i>Graduate</i>	31	25	26	28	26
<i>Full-Time</i>	9	2	3	6	10
<i>Part-Time</i>	22	23	23	22	16
<i>School of Science</i>	1141	1154	1092	1060	1003
<i>Undergraduate</i>	1141	1154	1092	1060	1003
<i>Full-Time</i>	1131	1136	1073	1046	981
<i>Part-Time</i>	10	18	19	14	23
<i>Non-Matriculated/Visiting/Undeclared</i>			294	276	394
<i>Undergraduate</i>			146	191	276
<i>Full-Time</i>			85	134	182
<i>Part-Time</i>			61	57	94
<i>Graduate</i>			148	85	118
<i>Full-Time</i>			2	1	2
<i>Part-Time</i>			146	84	116

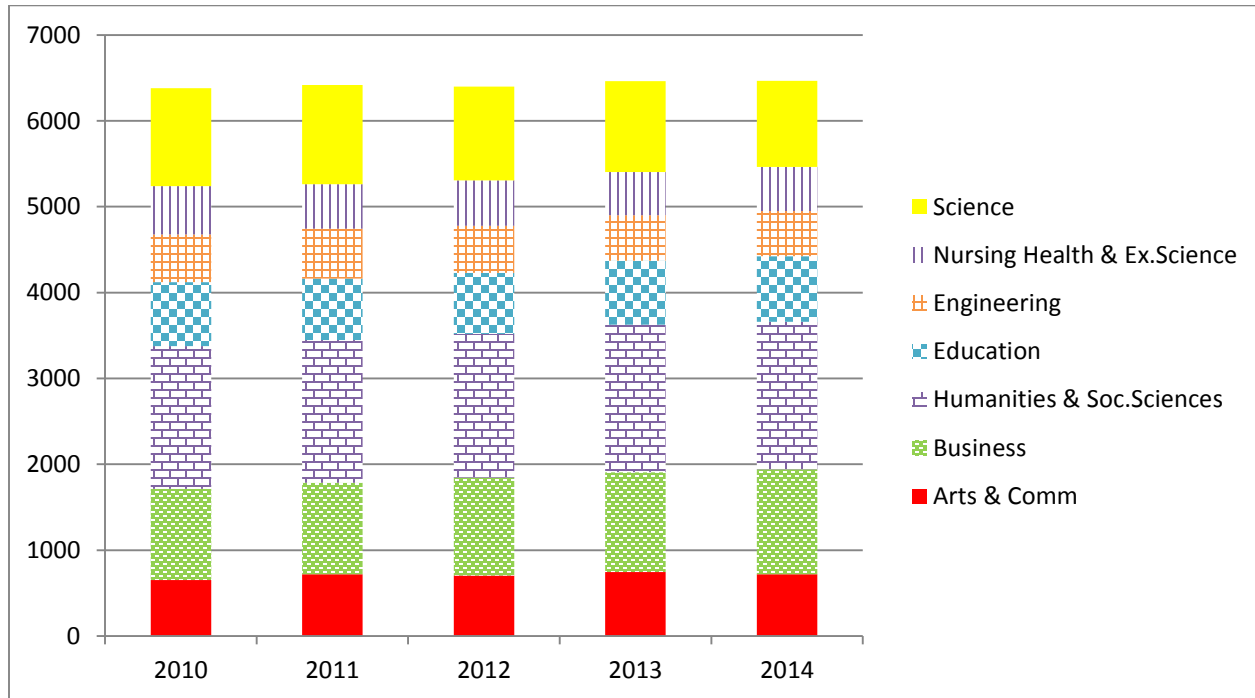
Official Census Date headcounts

Note: Enrollment counts include first majors only.

TRENDS IN TOTAL ENROLLMENT FALL 2010-2014



TRENDS IN TOTAL UGRD ENROLLMENT BY SCHOOL Fall 2010 – 2014



ETHNICITY OF STUDENTS FALL 2010-2014

Undergraduate Race/Ethnicity	2010	2011	2012	2013	2014
<i>White</i>	4288	4277	4303	4391	4360
<i>African-American/Black</i>	425	363	363	324	345
<i>Hispanic</i>	580	627	666	742	854
<i>Asian</i>	477	488	579	611	681
<i>Native American</i>	20	5	8	10	15
<i>Native Hawaiian*</i>	-	22	25	19	20
<i>Other</i>	31	-	-	-	-
<i>Not Reported</i>	639	584	504	477	410
<i>Two or More Races*</i>	-	118	81	63	45
<i>Non-Resident Alien*</i>	-	20	16	16	13
Total	6480	6504	6545	6653	6743

Graduate Race/Ethnicity	2010	2011	2012	2013	2014
<i>White</i>	482	476	471	471	417
<i>African-American/Black</i>	31	44	48	52	42
<i>Hispanic</i>	43	46	29	34	36
<i>Asian</i>	28	36	35	27	30
<i>Native American</i>	2	2	2	2	3
<i>Native Hawaiian*</i>	-	4	2	3	4
<i>Other</i>	6	-	-	-	-
<i>Not Reported</i>	63	40	132	92	131
<i>Two or More Races*</i>	-	3	5	6	3
<i>Non-Resident Alien*</i>	-	1	1	0	0
Total	655	648	725	687	666

*Federal reporting requirements for ethnicity were revised in 2010. New categories for Native Hawaiian, Two or more races and Non-Resident Aliens were added, Other was removed.

Official Census Date enrollment counts

ETHNICITY OF STUDENTS BY SCHOOL FALL 2014

Undergraduate Race/Ethnicity

Undergraduate	African American	Asian	Hispanic	Native American	Native Hawaiian	Nonresident Alien	Not Reported	Two or more races	White	Total
<i>School of Arts & Communications</i>	30	47	67	4	1	2	41	8	521	721
<i>School of Business</i>	61	117	122	3	4	3	76	9	824	1219
<i>School of Humanities & Social Sciences</i>	103	128	230	1	5	1	97	9	1145	1719
<i>School of Education</i>	30	36	97	3	2	0	36	1	561	766
<i>School of Engineering</i>	27	59	66	2	0	3	29	2	337	525
<i>School of Nursing Health & Exercise Science</i>	30	47	71	0	4	0	32	6	324	514
<i>School of Science</i>	49	228	115	2	2	4	50	9	544	1003
<i>Non-Matriculated /Visiting & Other</i>	15	19	86	0	2	0	49	1	104	276
Total Undergraduate	345	681	854	15	20	13	410	45	4360	6743

Graduate Race/Ethnicity

Graduate	African American	Asian	Hispanic	Native American	Native Hawaiian	Nonresident Alien	Not Reported	Two or more races	White	Total
<i>School of Humanities & Social Sciences</i>	2	1	1	0	0	0	2	1	19	26
<i>School of Education</i>	37	25	29	3	3	0	59	1	339	496
<i>School of Nursing Health & Exercise Science</i>	3	3	0	0	0	0	0	1	19	26
<i>Non-Matriculated & Visiting</i>	0	1	6	0	1	0	70	0	40	118
Total Graduate	42	30	36	3	4	0	131	3	417	666

Official Census Date enrollment counts.

**ENROLLMENT BY GENDER – FALL 2010 - 2014
TOTAL COLLEGE**

Undergraduate	2010	2011	2012	2013	2014
<i>Female</i>	3709	3673	3702	3802	3875
<i>Male</i>	2746	2831	2843	2851	2868
Total	6460	6504	6545	6653	6743
Graduate	2010	2011	2012	2013	2014
<i>Female</i>	536	526	584	580	555
<i>Male</i>	119	122	141	107	111
Total	655	648	725	687	666

**ENROLLMENT BY GENDER – FALL 2010-2014
GRADUATE LEVEL**

	2010	2011	2012	2013	2014
<i>School of Humanities & Social Sciences</i>					
Graduate	36	28	31	31	26
<i>Female</i>	29	19	23	24	21
<i>Male</i>	7	9	8	7	5
<i>School of Education</i>					
Graduate	520	527	520	543	496
<i>Female</i>	423	437	424	461	413
<i>Male</i>	97	90	96	82	83
<i>School of Nursing, Health & Exercise Science</i>					
Graduate	31	25	26	28	26
<i>Female</i>	29	22	23	26	20
<i>Male</i>	2	3	3	2	6

Official Census Date enrollment counts

**ENROLLMENT BY GENDER – FALL 2010-2014
UNDERGRADUATE LEVEL**

	2010	2011	2012	2013	2014
School of Arts & Communications	654	718	705	746	721
<i>Female</i>	434	447	411	446	429
<i>Male</i>	220	271	294	300	292
School of Business	1058	1066	1139	1162	1219
<i>Female</i>	435	429	466	453	471
<i>Male</i>	623	637	673	709	748
School of Education	746	713	713	747	786
<i>Female</i>	685	657	667	699	723
<i>Male</i>	61	56	46	48	43
School of Engineering	557	581	546	529	525
<i>Female</i>	116	125	122	127	129
<i>Male</i>	441	456	424	402	396
School of Humanities & Social Sciences	1662	1665	1674	1718	1719
<i>Female</i>	1015	1020	1028	1085	1078
<i>Male</i>	647	645	646	633	641
School of Nursing Health & Exercise Science	561	519	530	500	514
<i>Female</i>	403	374	382	363	369
<i>Male</i>	158	145	148	137	145
School of Science	1141	1154	1092	1060	1003
<i>Female</i>	576	559	524	522	518
<i>Male</i>	565	595	568	538	485
Other Undergraduate: Non-Matriculated, Undecided, Visiting	76	88	146	191	276
<i>Female</i>	45	62	102	107	158
<i>Male</i>	31	26	44	84	118

Official Census Date Enrollment Counts

ENROLLMENT BY RESIDENCE (In-State/Out-of-State)
FALL 2010 - 2014

Undergraduate	2010	2011	2012	2013	2014
<i>NJ Resident</i>	6111	6143	6178	6269	6289
<i>Non-Resident</i>	349	361	367	384	454
Total	6460	6504	6545	6653	6743
Graduate	2010	2011	2012	2013	2014
<i>NJ Resident</i>	566	574	617	590	561
<i>Non-Resident</i>	89	74	108	97	105
Total	655	648	725	687	666
	2010	2011	2012	2013	2014
Undergraduate School of Arts & Communications	654	718	705	746	721
<i>NJ Resident</i>	619	680	666	706	688
<i>Non-Resident</i>	35	38	39	40	33
Undergraduate School of Business	1058	1066	1139	1162	1219
<i>NJ Resident</i>	1019	1020	1095	1114	1172
<i>Non-Resident</i>	39	46	44	48	47
Undergraduate School of Education	746	713	713	747	766
<i>NJ Resident</i>	698	669	671	701	715
<i>Non-Resident</i>	48	44	42	46	51
Undergraduate School of Engineering	557	581	546	529	525
<i>NJ Resident</i>	529	546	508	482	477
<i>Non-Resident</i>	28	35	38	47	48
Undergraduate School of Humanities & Social Sciences	1662	1665	1674	1718	1719
<i>NJ Resident</i>	1593	1582	1602	1652	1658
<i>Non-Resident</i>	69	83	72	66	61
Undergraduate School of Nursing Health & Exercise Science	561	519	530	500	514
<i>NJ Resident</i>	522	481	492	459	481
<i>Non-Resident</i>	39	38	38	41	33
Undergraduate School of Science	1141	1154	1092	1060	1003
<i>NJ Resident</i>	1055	1083	1023	998	952
<i>Non-Resident</i>	86	71	69	62	51
Other Undergraduate: Non-Matriculated, Undecided, Visiting	80	88	146	191	276
<i>NJ Resident</i>	75	82	121	157	146
<i>Non-Resident</i>	5	6	25	34	130

**ENROLLMENT BY MAJOR
FALL 2010-2014**

Please use the following link to access tables that contain enrollment data for majors over the past four fall terms. The enrollment figures are for first majors only and are derived from the 10th day census date.

[Plan Enrollments by Term 2010 - 2015.xlsx](#)

**FIRST YEAR TO SECOND YEAR
RETENTION RATES FOR
ENTERING FIRST-TIME, FULL-TIME FRESHMAN
BY ETHNICITY
FALL 2008 – FALL 2014**

	Fall 2008	Fall 2009	Fall 2010	Fall 2011	Fall 2012	Fall 2013	AVG % Retained from Group to 2nd Fall Term
<i>Total # Freshmen in Cohort</i>	1295	1284	1421	1371	1363	1404	--
<i>African American</i>	91.30%	86.32%	87.00%	95.24%	90.91%	91.94%	90.45%
<i>Asian</i>	96.83%	96.64%	96.18%	94.71%	94.87%	92.25%	95.24%
<i>Hispanic</i>	92.19%	91.13%	92.05%	92.81%	89.47%	92.93%	91.76%
<i>Native American</i>	100.00%	66.67%	87.50%	83.33%	100.00%	100.00%	89.58%
<i>Native Hawaiian</i>	100.00%	100.00%	100.00%	100.00%	83.33%	100.00%	97.22%
<i>Not Reported</i>	93.85%	91.96%	98.41%	96.30%	89.01%	98.81%	94.72%
<i>White</i>	96.31%	95.75%	95.64%	94.37%	95.26%	94.77%	95.35%
<i>% Retained from Total Cohort to 2nd Fall Term</i>	95.78%	89.78%	93.83%	93.82%	93.84%	94.31%	93.61%

**1st YEAR to 2nd YEAR RETENTION RATES BY SCHOOL
FALL 2009 – FALL 2014**

School	2009	2010	2011	2012	2013
<i>Arts & Communication</i>	83.04%	89.80%	86.96%	86.43%	91.02%
<i>Business</i>	87.56%	88.94%	93.04%	89.45%	90.00%
<i>Education</i>	85.50%	81.63%	86.67%	90.54%	90.32%
<i>Engineering</i>	86.84%	85.09%	78.10%	78.86%	84.62%
<i>Humanities and Social Sciences</i>	84.21%	86.11%	84.53%	85.20%	89.30%
<i>Nursing, Health & Exercise Science</i>	86.14%	85.96%	84.21%	82.08%	85.11%
<i>Science</i>	86.81%	89.66%	87.88%	83.58%	89.31%
<i>AVG % All TCNJ</i>	94.16%	94.79%	94.38%	93.84%	94.31%

Source: Official Census Date Enrollment/freshmen cohort data- % returning in School

**4 YEAR, 5 YEAR & 6 YEAR
GRADUATION RATES FOR
ENTERING FIRST-TIME, FULL-TIME FRESHMAN
BY ETHNICITY & GENDER
FALL 2004 – FALL 2008 COHORTS**

Entering Cohort Year	2004	2005	2006	2007	2008
Total Number in Cohort	1231	1236	1270	1297	1295
% Graduating within 4 Years	71%	74%	72%	73%	73%
<i>Female</i>	76	78	77	78	76
<i>Male</i>	65	70	66	64	67
<i>African-American</i>	34	41	37	37	37
<i>Asian</i>	79	78	86	76	84
<i>Hispanic</i>	64	58	58	58	58
<i>Native American</i>	0	0	100	100	0
<i>Native Hawaiian/Pacific Islander</i>	79	0	0	0	25
<i>Non-Resident Alien</i>	67	0	0	0	50
<i>White</i>	74	78	76	78	76
<i>Two or More Races</i>	0	92	0	100	77
<i>Not Reported</i>	75	83	75	72	81
% Graduating within 5 Years	84%	85%	85%	83%	84%
<i>Female</i>	87	88	87	86	86
<i>Male</i>	81	81	82	79	81
<i>African-American</i>	59	58	59	56	60
<i>Asian</i>	86	83	93	83	91
<i>Hispanic</i>	76	77	72	71	77
<i>Native American</i>	0	0	100	100	0
<i>Native Hawaiian/Pacific Islander</i>	86	0	0	79	75
<i>Non-Resident Alien</i>	67	0	0	0	100
<i>White</i>	87	89	89	87	87
<i>Two or More Races</i>	0	92	0	87	89
<i>Not Reported</i>	85	88	83	84	87
% Graduating within 6 Years	86%	87%	87%	85%	87%
<i>Female</i>	89	89	88	87	88
<i>Male</i>	83	84	85	81	85
<i>African-American</i>	64	62	66	64	69
<i>Asian</i>	86	85	93	83	91
<i>Hispanic</i>	81	79	77	76	81
<i>Native American</i>	0	0	100	100	0
<i>Native Hawaiian/Pacific Islander</i>	88	0	0	83	100
<i>Non-Resident Alien</i>	67	0	0	0	100
<i>White</i>	89	90	90	88	89
<i>Two or More Races</i>	0	92	0	100	90
<i>Not Reported</i>	85	90	85	84	88

Source: IPEDS Graduate Rate Survey freshmen cohorts

**DEGREES GRANTED BY SCHOOL AND DEGREE TYPE
2009-2014**

School	Degree	2009-10	2010-11	2011-12	2012-13	2013-14
Arts & Comm UGRD	BA	91	88	112	98	118
Arts & Comm UGRD	BFA	41	37	46	28	35
Arts & Comm UGRD	BM	25	24	15	20	25
Business UGRD	BA	3	6	7	6	5
Business UGRD	BS	255	290	285	272	265
Humanities & Soc. Sci GRAD	MA	5	13	15	9	19
Humanities & Soc. Sci UGRD	BA	354	388	395	376	392
Humanities & Soc. Sci UGRD	BS	51	48	34	40	46
Education GRAD	CER	14	15	30	26	31
Education GRAD	EDS	5	4	5	3	3
Education GRAD	MA	28	43	43	35	45
Education GRAD	MAT	99	130	111	124	107
Education GRAD	MED	173	196	263	178	207
Education GRAD	MS	5	1	7	6	1
Education GRAD	SCT	91	98	102	86	111
Education UGRD	BS	165	178	162	171	166
Engineering UGRD	BABM	2	1	4	1	0
Engineering UGRD	BS	29	31	20	8	4
Engineering UGRD	BSBM	0	0	21	27	26
Engineering UGRD	BSCE	10	16	19	32	39
Engineering UGRD	BSCO	8	0	9	6	10
Engineering UGRD	BSEE	1	10	10	5	13
Engineering UGRD	BSES	0	0	0	3	3
Engineering UGRD	BSME	29	22	23	33	39
Independent Studies UGRD	BA	3	7	14	8	9
Nursing, Hlth, Ex. Sci GRAD	MED	5	4	2	1	1
Nursing, Hlth, Ex. Sci GRAD	MSN	7	10	9	10	10
Nursing, Hlth, Ex. Sci GRAD	SCT	2	2	0	1	0
Nursing, Hlth Ex. Sci UGRD	BS	73	84	72	63	63
Nursing, Hlth Ex. Sci UGRD	BSN	60	60	45	68	63
Science UGRD	BA	52	37	59	46	57
Science UGRD	BS	196	150	216	149	203

Source: CIE Graduation Statistics (defined by Federal IPEDS standards – July 1 through June 30).

**DEGREES GRANTED BY SCHOOL AND PROGRAM
2010 – 2015**

Use the link below to access tables containing the number of degrees awarded by School, plan, race/ethnicity and gender from 2010-11 up to 2014-15.

[TCNJ Degrees by Term - 2010 to 2015.xlsx](#)

EMPLOYEES BY IPEDS OCCUPATIONAL CATEGORY 2014 - 2015

Number of Staff by Employment Status and Occupational Category			
Academic Year 2014 - 2015			
Occupational Category	Reported Values		FTE Staff
	# of Full-time Staff	# of Part-time Staff	
Total Number of Staff	1114	551	1298
Instructional Staff	356	464	511
Librarians, Curators, Archivists	32	5	34
Student & Academic Affairs and other Education Services	82	16	87
Management Occupations	93	0	93
Business & Financial Operations	52	1	52
Computer, Engineering & Science Occupations	43	3	44
Community, Social Service, Legal, Arts, Design, Entertainment, Sports and Media Occupations	106	56	125
Healthcare Practitioners & Technical Occupations	14	3	15
Service Occupations	57	0	57
Office and Administrative Support	100	3	101
Natural Resources, Construction, and Maintenance Occupations	179	0	179

Source: IPEDS Human Resources Survey 2014-15

**EMPLOYEES BY GENDER
FALL 2010-2014**

	2010	2011	2012	2013	2014
Faculty - Full-Time	348	351	349	347	356
Male	176	176	175	175	174
Female	172	175	174	172	182
Faculty - Part-Time/Adjuncts	385	403	444	474	464
Male	169	180	209	215	218
Female	216	223	235	259	246
Staff - Full-Time	637	646	677	683	758
Male	290	298	302	310	333
Female	347	348	375	373	425
Staff - Part-Time	20	19	12	13	87
Male	6	4	3	3	47
Female	14	15	9	10	40
Total Employees	1,390	1,419	1,482	1,517	1,665
Male	641	658	689	703	772
Female	749	761	793	814	893

Source: IPEDS Human Resources Survey

**NUMBER OF FACULTY BY RANK AND TENURE STATUS
FALL 2010-FALL 2014**

	2010			2011			2012			2013			2014		
	Ten/ Ten Trk	Non Ten	Total	Ten/ Ten Trk	Non Ten	Total	Ten/ Ten Trk	Non Ten	Total	Ten/ Ten Trk	Non Ten	Total	Ten/ Ten Trk	Non Ten	Total
Full-Time:															
<i>Professor</i>	85	0	85	88	0	88	91	0	91	90	0	90	96	0	96
<i>Associate Professor</i>	136	0	136	138	1	139	138	1	139	140	2	142	149	1	150
<i>Assistant Professor</i>	111	12	123	93	25	118	95	17	112	100	10	110	85	19	104
<i>Instructor</i>	0	4	4	0	6	6	0	7	7	0	5	5	0	6	6
Total Full-Time Faculty	332	16	348	319	32	351	324	25	349	330	12	347	330	26	356
Total Part-Time Faculty	0	21	21	0	18	18	0	20	20	0	17	17	0	21	21
Grand Total	332	37	369	319	50	369	324	45	369	330	29	364	330	47	377

Part-Time Faculty includes regular part-time faculty. Adjuncts are not included.

Source: EIS HR Data

**TENURE STATUS AMONG FULL-TIME TENURE TRACK FACULTY
FALL 2010-FALL 2014**

	2010		2011		2012		2013		2014	
	Tenured/ Eligible	% Tenured	Tenured/ Eligible	% Tenured	Tenured/ Eligible	% Tenured	Tenured/ Eligible	% Tenured	Tenured/ Eligible	% Tenured
Professor	84/85	98.8%	86/88	97.7%	89/91	97.8%	90/90	100%	96/96	100%
Associate Professor	129/136	94.9%	120/138	87.0%	113/138	81.9%	136/140	97.1%	142/149	95.3%
Assistant Professor	44/111	39.6%	38/93	40.9%	36/95	37.9%	57/100	57.0%	36/85	42.4%
Grand Total	257/332	77.4%	244/319	76.5%	238/324	73.5%	283/330	85.8%	274/330	83.0%

*Key: % Tenured = # Tenured/# Eligible * 100.*

Note: Counts include active faculty.

Source: EIS/HR Faculty Data

**AVERAGE SALARY OF FULL-TIME FACULTY BY RANK
ACADEMIC YEARS 2010-11 THROUGH-2014-15**

	2010-11		2011-12		2012-13		2013-14		2014-15	
	Average Salary \$	% Increase from Previous Year	Average Salary \$	% Increase from Previous Year	Average Salary \$	% Increase from Previous Year	Average Salary \$	% Increase from Previous Year	Average Salary \$	% Increase from Previous Year
Professor	\$113,451	4.6%	\$116,059	4.2%	\$116,382	0.8%	\$118,454	2.9%	\$118,176	1.2%
Associate Professor	\$90,141	4.0%	\$93,391	5.2%	\$92,609	0.9%	\$94,650	3.2%	\$96,938	4.8%
Assistant Professor	\$73,715	6.3%	\$74,272	5.7%	\$74,075	0.8%	\$77,631	4.8%	\$78,741	4.9%
Instructor	\$73,878	5.2%	\$71,936	8.0%	\$75,491	0.0%	\$72,275	8.3%	\$71,079	9.0%

Note: Includes full-time faculty.

Percentage of increase from previous year includes continuing faculty salaries only.

Source: CIE/AAUP Annual Survey of Faculty Compensation

STATEMENT OF OPERATING ACTIVITIES
FY 2010-2014

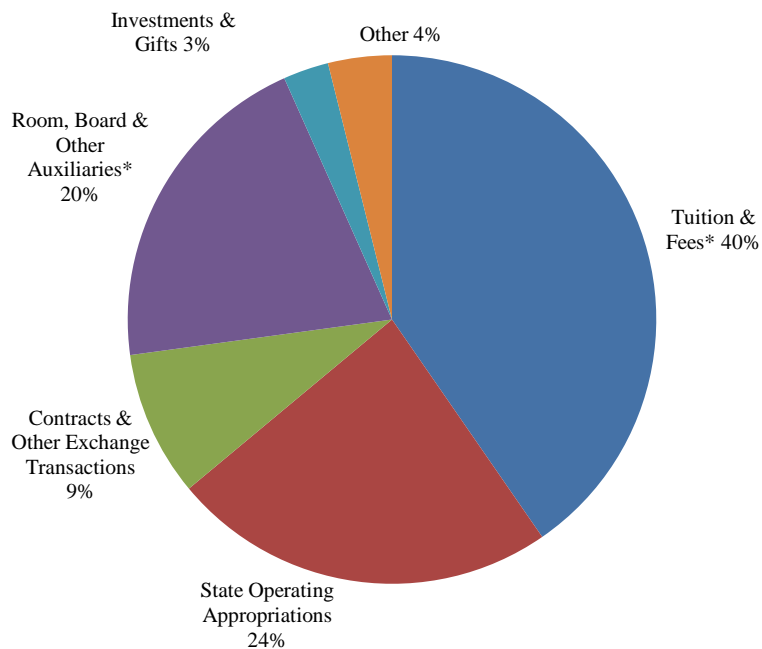
	FY10	FY11	FY12	FY13	FY14
Operating Revenue and Additions:					
Tuition & Fees, net of discounts and allowances	\$73,805,000	\$80,349,000	\$84,617,000	\$88,326,000	\$90,913,000
State operating appropriations	\$54,508,000	\$55,812,000	\$54,408,000	\$53,311,000	\$53,079,000
Contracts & other exchange transactions	\$17,323,000	\$18,500,000	\$19,937,000	\$21,169,000	\$20,048,000
Room, board & other auxiliaries, net of discounts and allowances	\$35,767,000	\$41,064,000	\$41,709,000	\$40,678,000	\$46,083,000
Investments & gifts	\$292,000	\$448,000	\$556,000	\$1,448,000	\$6,270,000
Other	\$9,766,000	\$3,487,000	\$3,274,000	\$3,850,000	\$8,777,000
Total operating revenues and support	\$191,461,000	\$199,660,000	\$204,501,000	\$208,782,000	\$225,170,000
<i>Total Discounts and Allowances</i>	\$25,102,000	\$24,613,000	\$25,685,000	\$26,882,000	\$27,349,000
Operating Expenses and Transfers:					
Instruction & Academic support	\$96,606,000	\$97,745,000	\$101,405,000	\$103,702,000	\$105,725,000
Sponsored activities	\$18,643,000	\$21,228,000	\$20,686,000	\$21,768,000	\$23,617,000
Student services	\$18,470,000	\$19,118,000	\$20,705,000	\$20,881,000	\$22,527,000
Student aid	\$790,000	\$865,000	\$902,000	\$1,024,000	\$1,039,000
Institutional Support	\$15,876,000	\$15,948,000	\$16,123,000	\$17,769,000	\$19,220,000
Room, board & other auxiliaries	\$30,486,000	\$34,389,000	\$33,775,000	\$35,087,000	\$37,401,000
Operation and maintenance of plant*	\$0	\$0	\$0	\$0	\$0
Transfers & other	\$3,227,000	\$1,327,000	\$1,289,000	\$292,000	\$2,005,000
Total operating expenses and transfers	\$184,098,000	\$190,620,000	\$194,885,000	\$200,523,000	\$211,534,000

Note: As of FY09-10, Operation and maintenance of plant expenses were reallocated within other areas and no longer a separate item under Expenses.

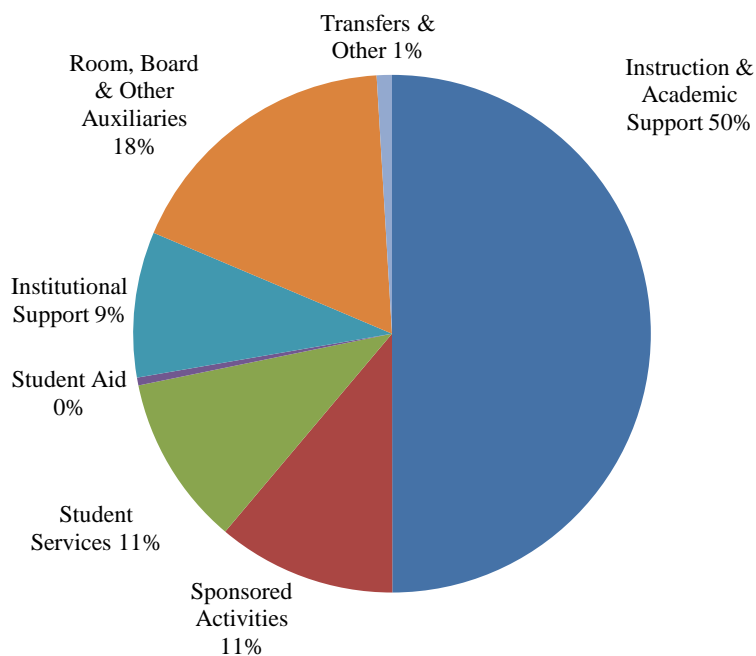
Source: CIE/IPEDS Finance Survey, GASB

OPERATING REVENUE, EXPENSES AND TRANSFERS FISCAL YEAR 2014

REVENUE (\$225,170,000)



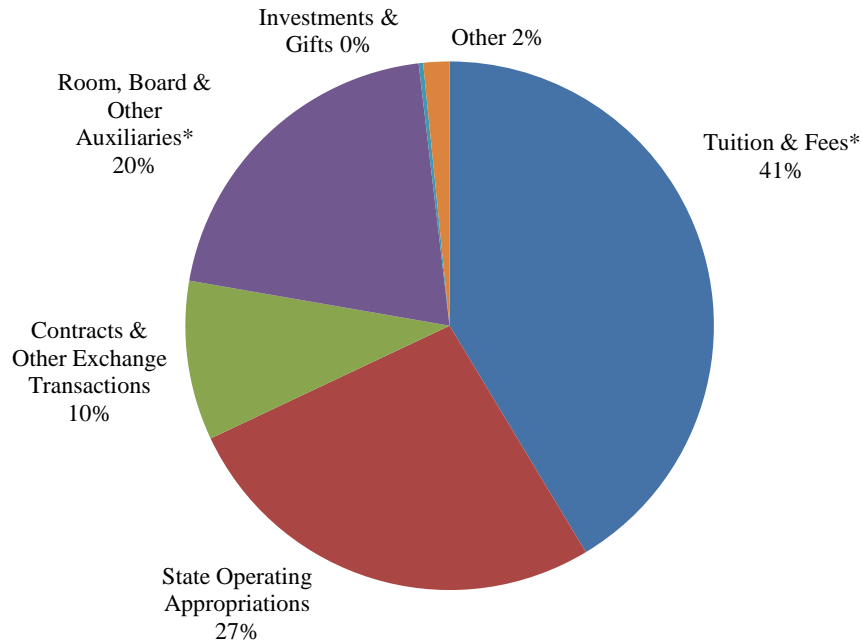
EXPENSES & TRANSFERS (\$211,534,000)



Source: CIE/IPEDS Finance Survey, GASB

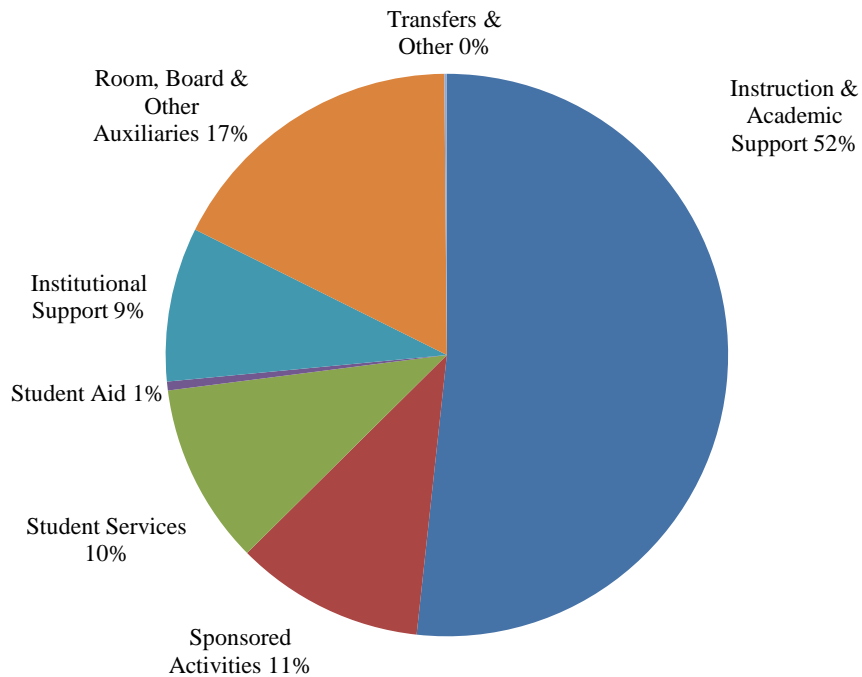
OPERATING REVENUE, EXPENSES AND TRANSFERS FISCAL YEAR 2013

REVENUE (\$208,782,000)



**Net of Scholarship & Fellowship Allowance*

EXPENSES & TRANSFERS (\$200,523,000)



Source: CIE/IPEDS Finance Survey, GASB

CHANGE IN NET ASSETS
FY 2011 - FY 2014

	FY10	FY11	FY12	FY13
Assets:				
Current Assets	\$101,311,000	\$95,209,000	\$103,666,000	\$120,239,000
Capital Assets, net	\$564,959,000	\$582,627,000	\$592,234,000	\$587,655,000
Other noncurrent assets	\$56,043,000	\$44,416,000	\$34,963,000	\$65,599,000
Total assets	<u>\$722,313,000</u>	<u>\$722,252,000</u>	<u>\$730,863,000</u>	<u>\$773,493,000</u>
Deferred Outflow	<u>\$28,943,000</u>	<u>\$25,052,000</u>	<u>\$23,806,000</u>	<u>\$22,559,000</u>
Liabilities:				
Current liabilities	\$39,116,000	\$29,182,000	\$38,850,000	\$47,537,000
Noncurrent liabilities	\$379,361,000	\$375,495,000	\$364,933,000	\$389,375,000
Total liabilities	<u>\$418,477,000</u>	<u>\$404,677,000</u>	<u>\$403,783,000</u>	<u>\$436,912,000</u>
Net Assets:				
Invested in capital assets, net of related debt	\$212,893,000	\$224,346,000	\$229,996,000	\$229,359,000
Restricted expendable	\$4,581,000	\$1,895,000	\$2,298,000	\$11,641,000
Unrestricted	\$115,305,000	\$116,386,000	\$118,592,000	\$118,140,000
Total net assets	<u>\$332,779,000</u>	<u>\$342,627,000</u>	<u>\$350,886,000</u>	<u>\$359,140,000</u>
Percent change from prior year	0.2%	3.0%	2.4%	2.4%

Source: Treasurer's Office, TCNJ

**EXTERNALLY SPONSORED ACTIVITIES
AWARDED GRANTS – FY2014**

Awarded - FY2014		
SCHOOL	DEPARTMENT	TOTAL AWARDS
Academic Affairs	Woodrow Wilson Teaching Fellowship	\$399,164.00
Art & Communications Total	Art Gallery/Sarnoff Center	\$23,950.00
School of Business Total	SBDC	\$198,985.00
Community Centers	Bonner Center	\$1,054,051.00
	NJ Sustainable Self Institute	\$871,866.00
Community Centers Total		\$1,925,717.00
Education	CATIES	\$381,563.00
	Ctr for Future Educators	\$645,000.00
	CSCD	\$815,604.00
School of Education Total		\$1,842,167.00
Engineering	Civil Engineering	\$71,370.00
Engineering	Electrical Engineering	\$44,023.00
Engineering	Mechanical Engineering	\$10,000.00
Engineering	Tech Studies - STEM	\$524,719.00
School of Engineering Total		\$650,112.00
Humanities & Social Sciences	History	\$173,108.00
Humanities & Social Sciences	World Lang. & Cultures	\$326,828.00
Humanities & Social Sciences	Ctr for Global Engagement	\$10,000.00
School of Humanities & Social Sciences Total		\$509,936.00
School of Nursing Health & Exercise Total	Nursing	\$78,013.00
Science	Biology	\$410,175.00
Science	Chemistry	\$85,000.00
	Computer Science	\$156,894.00
	Physics	\$151,977.00
School of Science Total		\$804,046.00
Total Student Life	ADEP	\$78,500.00
College of New Jersey Total		\$6,510,590.00

Source: Director of Grants

**UNDERGRADUATE TUITION, FEES, ROOM AND BOARD CHARGES AND ANNUAL RATE OF INCREASE,
ACADEMIC YEARS 2004-05 UP TO 2014-15**

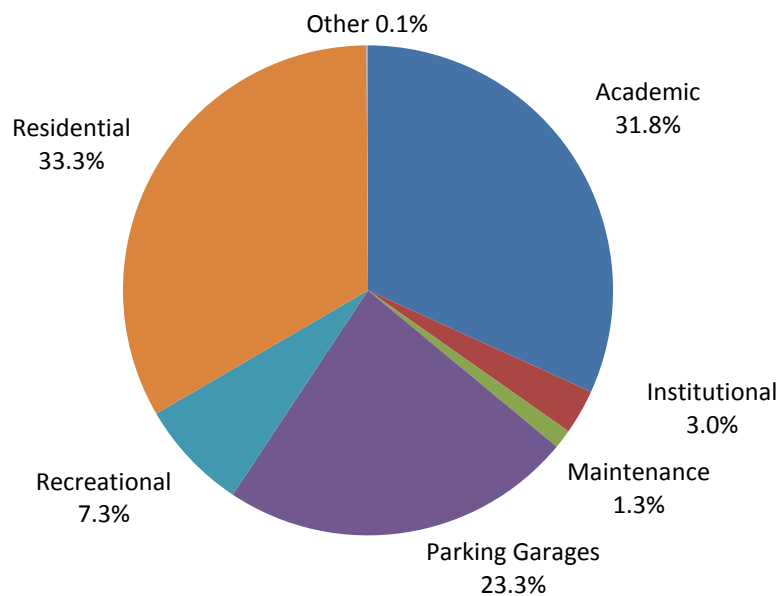
Year	Tuition				Fees		Room & Board*	
	Resident		Non-Resident					
	\$	% Increase	\$	% Increase	\$	% Increase	\$	% Increase
2004-05	6,621	8.0%	11,562	8.0%	2,497	20.3%	8,093	4.5%
2005-06	7,051	6.5%	12,314	6.5%	2,806	12.4%	8,458	4.5%
2006-07	7,615	8.0%	14,161	15.0%	2,938	4.7%	8,843	4.6%
2007-08	8,072	6.0%	15,295	8.0%	3,235	10.1%	9,242	4.5%
2008-09	8,718	8.0%	16,825	10.0%	3,590	11.0%	9,612	4.0%
2009-10	8,980	3.0%	17,666	5.0%	3,742	4.2%	9,996	4.0%
2010-11	9,340	4.0%	18,726	6.0%	3,953	5.6%	10,358	3.6%
2011-12	9,760	4.5%	19,569	4.5%	4,127	4.4%	10,677	3.1%
2012-13	10,102	3.5%	20,254	3.5%	4,276	3.6%	10,998	3.0%
2013-14	10,355	2.5%	20,760	2.5%	4,375	2.3%	11,343	3.0%
2014-15	10,562	2.0%	21,175	2.0%	4,462	2.0%	11,676	2.9%

Source: CIE/Common Data Set

* Board = Carte Blanche 'C'

CAMPUS BUILDING INVENTORY 2014-15

	SqFt.%	Sq.Ft.	#Buildings
Academic	31.8%	1,095,515	15
Institutional	3.0%	104,148	2
Maintenance	1.3%	43,111	3
Parking Garages	23.3%	803,684	5
Recreational	7.3%	248,753	5
Residential	33.3%	1,148,021	15
Other	0.1%	3,055	1
Total Campus Buildings	100.0%	3,446,287	46



Source: CIE

THE COLLEGE OF NEW JERSEY LIBRARY

Facilities and Services

The College of New Jersey Library, provides high-quality information resources, expertise and a learning environment that enhance the search for knowledge and understanding. The Library serves as an intellectual, cultural and social center for the College, empowering TCNJ community members to become self-directed, lifelong learners and responsible citizens.

The five-story, 135,000 square-foot facility, in addition to housing the traditional library collections and services, provides 26 group study rooms, a café, a late-night study area, and a 105-seat multi-purpose auditorium.

TCNJ Library Collections:

Archives: Materials documenting the college's history, dating from the Normal School era in the mid-1800's to the present. Materials range from early annual reports and a historic textbook collection, through college publications, to photographs, slides, and memorabilia.

Children's/Young Adults Collection: This specialized area of over 28,000 titles contains many award winning fiction and non-fiction resources for young people from preschool age through senior high school. Included are reference materials for school age students including: folk tales, poetry, subject guides to picture books, bibliotherapy, selected summaries, review sources and encyclopedias.

Curriculum & K-12 Elementary – High School Texts Collections: The Curriculum Reference Collection contains several thousand curriculum guides on microfiche from the Kraus Curriculum Development Library. Behavior objective guides by subject, multiple titles in the series, *Educators Guide to Free Materials*, and Scope and Sequence charts.

General Collection: The General Collection consists of more than 562,000 books that have been selected by faculty and subject specialist librarians to support course offerings of the college and to provide a broad representative collection of titles across many disciplines. This growing collection includes fiction, non-fiction, and children's/youth books.

Music & Media: The library's Music and Media Collections consist of ca. 7,500 volumes of printed music, ca. 21,000 sound recordings in LP and CD format, and ca. 13,000 video recordings in DVD, VHS and U-Matic formats.

Periodicals: The library has access to over 30,000 periodical titles, which are available in a variety of formats: print, online, and microfilm/microfiche.

Reference: The Reference Collection numbers approximately 11,000 volumes and includes general encyclopedias, almanacs, dictionaries, atlases, and the like, as well as a large collection of subject specific reference works.

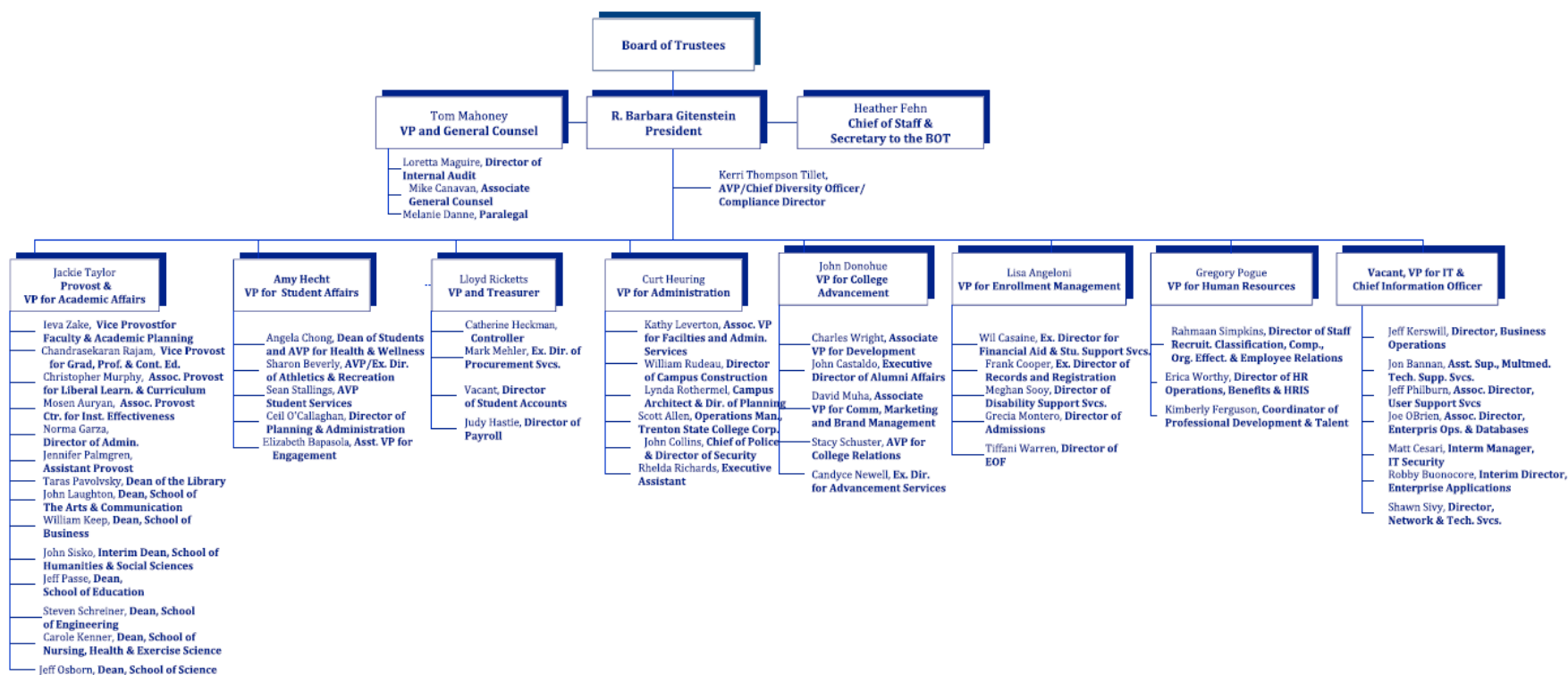
Library Holdings (2014):

Books, serial backfiles, and government documents :	702,590
<i>(including bound periodicals & newspapers; physical & digital/electronic)</i>	
Current serial subscriptions:	73,733
<i>(paper, microform & electronic titles)</i>	
Microforms (units):	426,253
Video and audio (units):	52,200
Online electronic database access:	113

**THE COLLEGE OF NEW JERSEY
REGIONAL, NATIONAL, AND SPECIALIZED ACCREDITORS**

Accreditation Board for Engineering and Technology (ABET)
American Chemical Society (ACS)
Association to Advance Collegiate Schools of Business (AACSB)
Association of Small Business Development Centers (SBDC)
Commission on Collegiate Nursing (CCNE)
Computing Accreditation Commission of Accreditation Board for Engineering and Technology (CAC)
Council on Education of the Deaf (CED)
Council for Accreditation of Counseling & Related Education Programs (CACREP)
Engineering Accreditation Commission of Accreditation Board for Engineering and Technology (EAC)
Middle States Commission on Higher Education (MSCHE)
National Association of Schools of Music (NASM)
National Council for Accreditation of Teacher Education (NCATE)
National League for Nursing Accreditation Commission (NLNAC)

ADMINISTRATIVE ORGANIZATIONAL CHART 2015



MEMBERS OF THE BOARD OF TRUSTEES

AS OF SEPTEMBER 2015

Ex-Officio Members

Dr. R. Barbara Gitenstein, PhD, *President, Ex-Officio*

Officers of the Board

Mr. Jorge A. Caballero, *Chair*

Ms. Treby Williams, *Vice Chair*

Dr. Robert A. Altman, *Secretary*

Appointed Members

Mr. Bradley S. Brewster

Mr. Miles Powell II

Mr. Christopher R. Gibson, Esq.

Ms. Eleanor V. Horne

Mrs. Rosie Hymerling

Ms. Susanne Svizeny

Dr. Frederick Keating

Mr. Albert M. Stark

Mr. Brian Markison

Dr. Joshua M. Zeitz

Student Members

Mr. Kevin Kim, *Student Trustee*

Mr. Ryan Molicki, *Alternate Student Trustee*

Equal Employment Opportunity & Diversity/Affirmative Action

The College of New Jersey is committed to equal opportunity, affirmative action and diversity. The College values diversity and is actively engaged in enriching the diversity of its faculty, staff and students. Central to the College's mission is creating a climate that is inclusive and respectful to everyone on campus. The College of New Jersey does not discriminate on the basis of race, creed, color, national origin, nationality, ancestry, age, sex/gender (including pregnancy), marital status, civil union status, domestic partnership status, familial status, religion, affectional or sexual orientation, gender identity or expression, atypical hereditary cellular or blood trait, genetic information, liability for service in the Armed Forces of the United States, or disability.