



Facts & Institutional Figures

Center for Institutional Effectiveness

A 3D graphic consisting of several overlapping, semi-transparent blue and grey rectangular blocks arranged in a row, creating a sense of depth and perspective. The text "2016 - 2017" is centered on the middle block.

2016 - 2017

The College of New Jersey

Facts & Institutional Figures

Prepared By:

The Center for Institutional Effectiveness

Mosen Aryan

Associate Provost for Institutional Effectiveness

aryanm@tcnj.edu

Jim Mehalick

Director of Business Intelligence

mehalicj@tcnj.edu

Marie Tuscano

Assistant Director of Institutional Research

tuscano@tcnj.edu

LaMont Rouse

Assistant Director of Assessment

rousel@tcnj.edu

Jennifer Sizoo

Research Analyst

sizoo@tcnj.edu

Telephone: 609/771-2801 Fax: 609/637-5136

Center for Institutional Effectiveness Homepage: <http://cie.tcnj.edu>

Contents

Mission & Vision	4
At A Glance	5
SYNOPSIS OF UNDERGRADUATE DEGREE PROGRAMS AND MAJORS	7
SYNOPSIS OF GRADUATE DEGREE PROGRAMS AND MAJORS	9
TOP 20 MOST POPULAR UNDERGRADUATE MAJORS	11
AVERAGE SCHOLASTIC APTITUDE TEST SCORES BY ADMIT TYPE FOR FIRST-TIME FRESHMAN	12
FIRST-TIME FRESHMAN ADMISSIONS ACTIVITY	13
DISTRIBUTION OF COMPLETED ADMISSIONS APPLICATIONS AND ACCEPTED OFFERS	14
ENROLLMENT BY SCHOOL AND ATTENDANCE STATUS	15
TRENDS IN TOTAL ENROLLMENT	17
ETHNICITY OF STUDENTS	18
COLLEGE ENROLLMENT BY GENDER	20
UNDERGRADUATE ENROLLMENT BY GENDER AND RESIDENCE STATUS	21
ENROLLMENT BY MAJOR	23
1st TO 2nd YEAR RETENTION FOR ENTERING FIRST-TIME, FULL-TIME FRESHMEN BY SCHOOL AND ETHNICITY	25
GRADUATION RATES FOR ENTERING FIRST-TIME, FULL-TIME FRESHMAN ETHNICITY AND GENDER	25
DEGREES GRANTED BY SCHOOL, DEGREE TYPE AND MAJOR	26
EMPLOYEES BY ETHNICITY AND IPEDS OCCUPATIONAL CATEGORY	28
EMPLOYEES BY GENDER	29
NUMBER OF FACULTY BY RANK AND TENURE STATUS	30
TENURE STATUS AMONG FULL-TIME TENURE TRACK FACULTY	31
AVERAGE TOTAL COMPENSATION OF FULL-TIME FACULTY BY RANK	32
STATEMENT OF OPERATING ACTIVITIES	33
OPERATING REVENUE, EXPENSES AND TRANSFERS	34
CHANGE IN NET ASSETS	36

EXTERNALLY SPONSORED ACTIVITIES	37
UNDERGRADUATE TUITION, FEES, ROOM AND BOARD CHARGES PER YEAR AND ANNUAL RATE OF INCREASE	38
BUILDING INVENTORY	39
COLLEGE LIBRARY	40
THE COLLEGE OF NEW JERSEY REGIONAL, NATIONAL, AND SPECIALIZED ACCREDITORS	41
ADMINISTRATIVE ORGANIZATION CHART	42
BOARD OF TRUSTEES	43



Mission & Vision

MISSION STATEMENT

The College of New Jersey, founded in 1855 as the New Jersey State Normal School, is primarily an undergraduate and residential college with targeted graduate programs. Grounded in the liberal arts, TCNJ's personalized, collaborative, and rigorous education engages students at the highest level within and beyond the classroom. TCNJ believes in the transformative power of education to develop critical thinkers, responsible citizens, and lifelong learners and leaders. The College empowers its diverse students, staff and faculty to sustain and enhance their communities both locally and globally.

VISION

TCNJ will offer an unparalleled education in a vibrant, collaborative and inclusive community of learners who will make a distinct mark on the world. By following our values, we will serve as a national exemplar of public higher education, and we will do this while being committed to accessibility and affordability.



At A Glance

HISTORY/LOCATION

1855 New Jersey State Normal School
 1908 New Jersey State Normal School at Trenton
 1929 New Jersey State Teachers College and State Normal School at Trenton
 1937 New Jersey State Teachers College at Trenton
 1958 Trenton State College
 1996 The College of New Jersey

The College of New Jersey (TCNJ) is a highly selective institution that has earned national recognition for its commitment to excellence. TCNJ currently is ranked as the No. 1 public institution in the northern region of the country by U.S. News & World Report, and is considered a best value in higher education by both Princeton Review and Kiplinger's Personal Finance. TCNJ was also awarded, in 2006, a Phi Beta Kappa chapter, an honor shared by less than 10 percent of colleges and universities nationally.

The College of New Jersey's academic tradition reaches back to 1855 when it was established by the state legislature as the New Jersey State Normal School. It was the first teacher training school in the state and the ninth in the nation. Governor Rodman Price, sometimes called the founder of the New Jersey Normal School, promoted the idea of a training institute for New Jersey's teachers and mobilized support among influential state leaders.

Originally located on Clinton Avenue in Trenton, the Normal School flourished in the latter 1800s, expanding both its academic offerings and physical facilities. In 1925, the first four-year baccalaureate degree program was established. This change marked the beginning of TCNJ's transition from a normal school to a teachers' college and was accompanied by a change in physical surroundings. In 1928, a beautiful 210-acre tract of land in Ewing Township was purchased as a new site for the College.

Graduate study was instituted at the College in 1947, and accreditation from various national associations was forthcoming in the 1950s. The enactment of the Higher Education Act of 1966 paved the way for TCNJ to become a multipurpose institution by expanding its degree programs into a variety of fields other than education. By 1972, seventy percent of entering students were selecting non-teaching majors.

In the 1970s, a period of declining enrollments nationwide, the College made a decision to raise, rather than lower, its already high standards. Since that time, the academic profile of entering classes has continued to rise and as a result, the College has become one of the most competitive schools of its kind in the nation. Today the College provides academically prepared students with a challenging undergraduate education and a rewarding residential experience, small classes, and a prestigious faculty.

ACADEMIC SCHOOLS, PROGRAMS AND DEGREES

The College of New Jersey emphasizes the undergraduate experience. A strong liberal arts core forms the foundation for a wealth of degree programs offered through TCNJ's seven schools—Arts & Communication; Business; Humanities & Social Sciences; Education; Science; Nursing, Health, & Exercise Science; and Engineering. The College is enriched by an honors program and extensive opportunities to study abroad, and its award-winning First-Year Experience and freshman orientation programs have helped make its retention and graduation rates among the highest in the country.

CAMPUS

Known for its natural beauty, the College's campus is set on 289 tree-lined acres in suburban Ewing Township. The College has 39 major buildings, including a state-of-the-art library; 14 residence halls that accommodate 3,600 students; an award-winning student center; more than 20 academic computer laboratories; a full range of laboratories for nursing, microscopy, science, and technology; a music building with a 300-seat concert hall; and a collegiate recreation and athletic facilities complex. TCNJ has a full-time undergraduate enrollment of approximately 6,200 students (95 percent from New Jersey).

STUDENT LIFE

The College of New Jersey encourages students to expand their talents and skills through more than 150 organizations that are open to students. These groups range from performing ensembles and professional and honor societies to student publications, Greek organizations, as well as intramural and club sports. The College also offers numerous leadership opportunities through the Student Finance Board, Student Government Association, and Residence Hall Government to name a few.

ATHLETICS

High achievement and scholarship in the classroom have been mirrored by the success of The College of New Jersey's varsity student-athletes. Since the 1978–79 Lion wrestling team captured the College's first National Collegiate Athletic Association (NCAA) team championship, TCNJ has established itself as one of the nation's most successful Division III (non-athletic scholarship) programs. Since 1979, The College of New Jersey has amassed a total of 39 Division III crowns in six different sports. In addition, the Lions have posted 32 runner-up awards, giving the College an aggregate of 71 first- and second-place finishes. That figure is tops among the nation's 400-plus Division III colleges and universities during the past 30 years. The Lions have also produced 54 Division III CoSIDA Academic All-Americans.

As impressive as the overall athletic record is, TCNJ's accomplishment as a leader in women's sports is even greater. Since NCAA Championships were initiated for women in 1981, only TCNJ has won 32 Division III team championships. The total does not include the Lions' lacrosse championship in 1981 or the softball championships in 1980 and 1981, which were sponsored by the AIAW (Association for Intercollegiate Athletics for Women) prior to women's sports inclusion in the NCAA. In the fall of 1999, TCNJ's women's athletic program was voted as the top Division III institution for female student-athletes by *Sports Illustrated for Women*.

SYNOPSIS OF UNDERGRADUATE DEGREE PROGRAMS AND MAJORS

College-Wide Programs	Self-Designed Major	BA
School of the Arts & Communication	Art Education	BA
	Art History	BA
	Communication Studies	BA
	Visual Arts (options available in Fine Arts, Graphic Design and Lens-Based Art)	BFA
	Interactive Multimedia	BA
	Journalism & Professional Writing	BA
	Music (options available in Performance and Teacher Preparation)	BA, BM
School of Business	Accountancy	BS
	Business Administration (specializations in Finance, Interdisciplinary Business, International Business, Management, Marketing)	BS
	Economics (options available in Secondary Education and 7 Year Medical)	BA, BS
School of Education	Early Childhood Education (Special Education & Deaf and Hard of Hearing options)**	BS
	Education of the Deaf and Hard of Hearing/Elementary Education**	BS
	Elementary Education**	BS
	Special Education/Elementary Education**	BS
	Urban Education **	BS
**non-certification at the baccalaureate level; 5 year dual certification at the master's level		
School of Engineering	Biomedical Engineering (7 Year Medical option)	BSBME
	Civil Engineering	BSCE
	Computer Engineering	BSCoE
	Electrical Engineering	BSEE
	Engineering Science (specializations in Engineering Management; 7 Year Medical option)	BS
	Mechanical Engineering	BSME
	Integrative STEM Education	BS
	Technology Education (options available in Teacher Preparation K-12 Education)	BS
School of Humanities & Social Sciences	African American Studies	BA
	Criminology	BA
	English***	BA
	History***	BA

	International Studies	BA
	Philosophy **	BA
	Political Science	BA
	Psychology	BA
	Sociology	BA
	Spanish***	BA
	Women's and Gender Studies	BA
** option in 7 Year Medical Programs *** options in Secondary Education and 7 Year Medical Programs		
School of Nursing, Health, and Exercise Science	Health and Exercise Science (option available in Teacher Preparation)	BS
	Nursing	BSN
	Public Health	BA
School of Science	Biology*	BS
	Chemistry*	BS
	Computer Science	BS
	Mathematics* (option available in Statistics)	BA
	Physics*	BS
*options available in Secondary Education and 7 Year Medical Programs		

Key	
BA	Bachelor of Arts
BFA	Bachelor of Fine Arts
BM	Bachelor of Music
BS	Bachelor of Science
BABME	Bachelor of Arts in Biomedical Engineering
BSCE	Bachelor of Science in Civil Engineering
BSCoE	Bachelor of Science in Computer Engineering
BSEE	Bachelor of Science in Electrical Engineering
BSE	Bachelor of Science in Engineering
BSME	Bachelor of Science in Mechanical Engineering
BSN	Bachelor of Science in Nursing

SYNOPSIS OF *GRADUATE* DEGREE PROGRAMS AND MAJORS

Educational Specialist	Marriage and Family Counseling	EDS
Master of Arts	School Counseling	MA
	Clinical Mental Health Counseling	MA
	Marriage, Couples and Family Counseling and Therapy	MA
	English	MA
Master of Arts in Teaching	Elementary Education (Leads to Certification)	MAT
	Early Childhood (Leads to Certification) Program A (no prior teaching certificate) Program B (already P-3 certified through alternate route)	MAT
	MAT Early Childhood: Urban (available only to graduates of TCNJ's undergraduate portion of this program) MAT Elementary: Urban (available only to graduates of TCNJ's undergraduate portion of this program)	MAT
	Education of the Deaf and Hard of Hearing (available only to graduates of TCNJ's undergraduate portion of this program)	MAT
	Secondary Education- English (Leads to Certification/new applicants not accepted after 2017-18 academic year)	MAT
	Secondary Education- Social Studies (Leads to Certification/new applicants not accepted after 2017-18 academic year)	MAT
	Secondary Education- Mathematics (Leads to Certification)	MAT
	Secondary Education- Science: Biology, Chemistry or Physics (Leads to Certification)	MAT
	Secondary Education-Technology Education 2014-2015 Planner	MAT
	Special Education (Leads to Certification) Alternate Route to Special Education Certification Program	MAT
	Special Education (Leads to Certification)	MAT
Master of Education	Teaching English as a Second Language	MED
	Reading (Leads to Certification)	MED
	Reading (with Reading Specialist Certification)	MED
	Educational Leadership: Instruction (through RTC)	MED

	Educational Leadership (Leads to Principal Certification)	MED
	Special Education (Must be Certified in Special Education)	MED
	Special Education (Must be Certified in Other Area)	MED
	Special Education- Teacher of Students with Blindness or Visual Impairment (Must be Certified)	MED
	Integrative Science, Technology, Engineering and Math (I-STEM)	MED
Master of Science in Nursing	Family Nurse Practitioner	MSN
	Family Nurse Practitioner (for Certified NPs)	MSN
	Adult-Gerontological Nurse Practitioner	MSN
	Neonatal Nurse Practitioner Planner 2008-2009	MSN
	Clinical Nurse Leader *Program recently highlighted in Advance for Nurses.	MSN
	Bridge to the Master of Science in Nursing for RNs (not available for school nursing)	MSN
	School Nurse	MSN

**20 MOST POPULAR UNDERGRADUATE MAJORS
FALL 2016**

Rank	Major
1	Biology
2	Psychology
3	Elementary Education
4	Communication Studies
5	Nursing
6	Finance
7	English
8	Marketing
9	Accountancy
10	Health & Exercise Science
11	History
12	Criminology
13	Management
14	Mathematics
15	Special Education
16	Computer Science
17	Political Science
18	Biomedical Engineering
19	Interactive Multimedia
20	Business – Open Option

Note: Ranks are based on primary major enrollment counts.

SOURCE: CIE Enrollment data

AVERAGE SAT SCORES BY ADMIT TYPE FOR FIRST-TIME FRESHMEN ENTERING FALL 2016

SAT Critical Reading Scores	
Regular Admits	604
EOF Admits	522
All Admits	593
National Average	494
SAT Mathematics Scores	
Regular Admits	629
EOF Admits	545
All Admits	617
National Average	508
SAT Writing Scores	
Regular Admits	607
EOF Admits	532
All Admits	596
National Average	482

Source: TCNJ Center for Institutional Effectiveness/College Board 2016

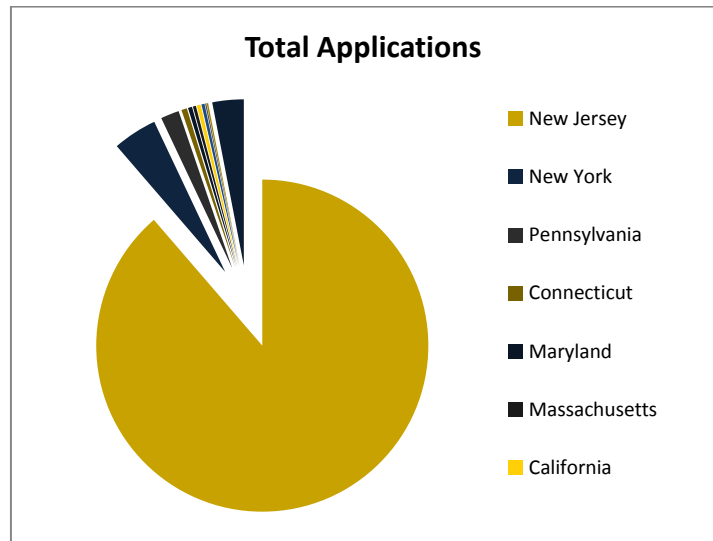
**FIRST-TIME FRESHMAN ADMISSIONS ACTIVITY
FALL 2016**

	Total Applications	Offered Admission	Offer Rate	Offer Accepted	Yield
All Students					
Total	11825	5778	48.86%	1457	25.2%
NJ Residents					
Total	10486	4948	47.19%	1355	27.4%
NonResident					
Total	1339	830	61.98%	102	13.3%

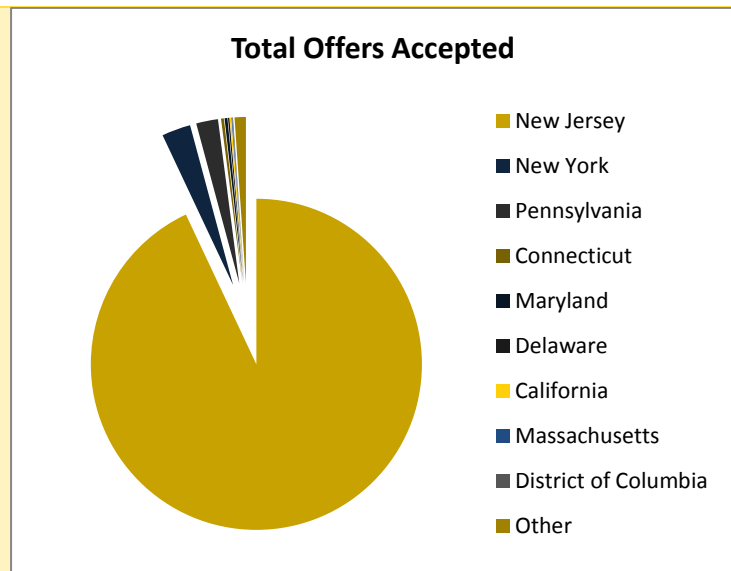
Source: TCNJ Center for Institutional Effectiveness

DISTRIBUTION OF COMPLETED ADMISSIONS APPLICATIONS AND ACCEPTED OFFERS FIRST-TIME FRESHMAN FROM SELECT STATES FALL 2016

State	Total Applications	% of Total
New Jersey	10486	89.26%
New York	508	4.68%
Pennsylvania	212	2.19%
Connecticut	64	0.66%
Maryland	47	0.50%
Massachusetts	35	0.47%
California	45	0.27%
Delaware	36	0.24%
District of Columbia	14	0.18%
Virginia	17	0.13%
Other	361	1.43%



State	Offers Accepted	% of Total
New Jersey	1355	93.00%
New York	41	2.81%
Pennsylvania	31	2.13%
Maryland	4	0.27%
Connecticut	4	0.27%
California	2	0.14%
Delaware	2	0.14%
District of Columbia	1	0.07%
Massachusetts	1	0.07%
Other	16	1.10%
Total All Enrolled	1457	100%



CIE fall 2016 Admissions data

ENROLLMENT BY SCHOOL AND ATTENDANCE STATUS FALL 2012-2016

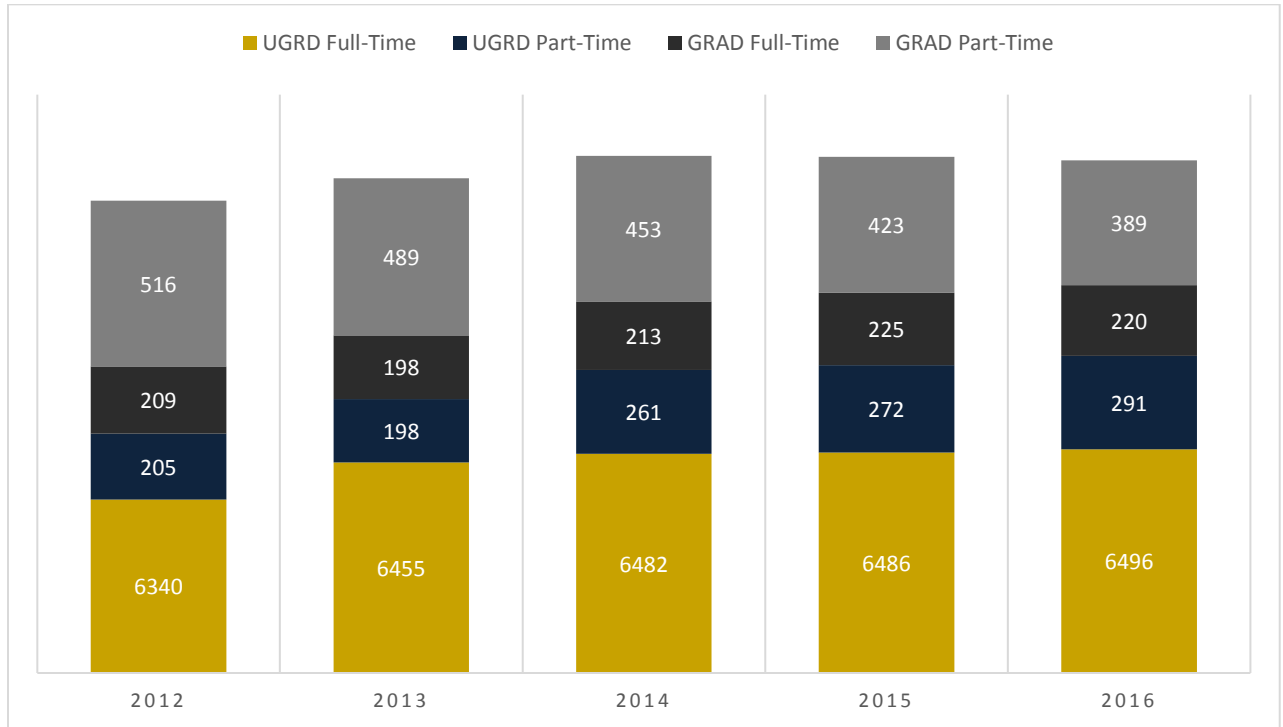
	2012	2013	2014	2015	2016
College Total	7270	7340	7409	7406	7396
Full-Time	6549	6653	6695	6711	6716
Part-Time	721	687	714	695	680
Undergraduate Total	6545	6653	6743	6758	6787
Full-Time	6340	6455	6482	6486	6496
Part-Time	205	198	261	272	291
Graduate Total	725	687	666	648	609
Full-Time	209	198	213	225	220
Part-Time	516	489	453	423	389
School of Arts & Communications	705	746	721	743	795
Undergraduate	705	746	721	743	795
Full-Time	688	728	702	714	768
Part-Time	17	18	19	29	27
School of Business	1139	1162	1219	1164	1206
Undergraduate	1139	1162	1219	1164	1206
Full-Time	1123	1145	1186	1138	1165
Part-Time	16	17	33	26	41
School of Humanities & Social Sciences	1705	1749	1745	1706	1554
Undergraduate	1674	1718	1719	1674	1530
Full-Time	1616	1660	1671	1630	1491
Part-Time	58	58	48	44	39
Graduate	31	31	26	32	24
Full-Time	7	11	5	17	8
Part-Time	24	20	21	15	16
School of Education	1233	1290	1262	1299	1222
Undergraduate	713	747	766	770	768
Full-Time	699	737	759	759	752
Part-Time	14	10	7	11	16

	2012	2013	2014	2015	2016
<i>Fall Enrollment Continued</i>					
<i>School of Education</i>					
Graduate	520	543	496	529	454
Full-Time	197	180	196	180	211
Part-Time	323	363	300	349	243
<i>School of Engineering</i>	546	529	525	555	581
Undergraduate	546	529	525	555	581
Full-Time	541	523	520	550	574
Part-Time	5	6	5	5	7
<i>School of Nursing, Health & Exercise Science</i>	553	528	540	571	652
Undergraduate	530	500	514	537	619
Full-Time	515	482	481	471	524
Part-Time	15	18	33	66	95
Graduate	26	28	26	34	33
Full-Time	3	6	10	10	0
Part-Time	23	22	16	24	33
<i>School of Science</i>	1092	1060	1003	1058	1088
Undergraduate	1092	1060	1003	1058	1088
Full-Time	1073	1046	981	1040	1070
Part-Time	19	14	23	18	18
<i>Non-Matriculated/ Visiting/Undeclared /Independent Studies</i>	294	276	394	394	289
Undergraduate	191	276	191	257	200
Full-Time	134	182	134	184	152
Part-Time	57	94	57	73	48
Graduate	85	118	85	53	89
Full-Time	1	2	1	18	1
Part-Time	84	116	84	35	88

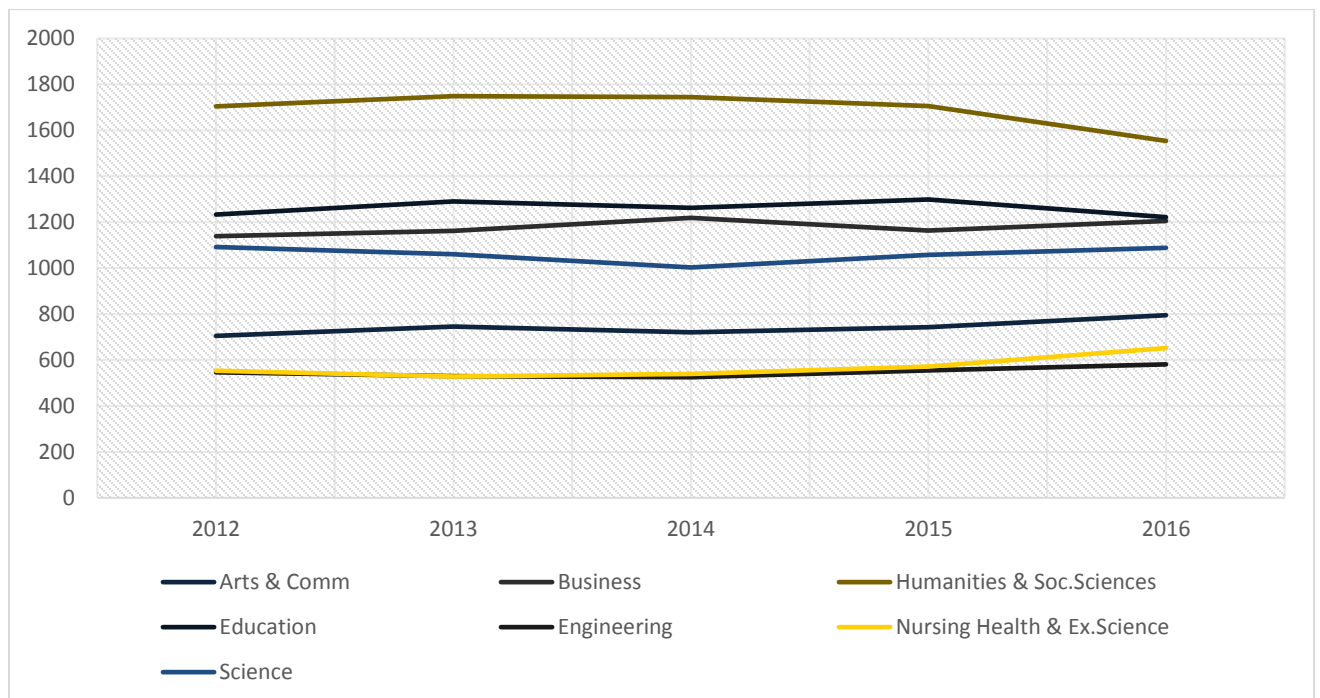
Official Census Date headcounts

Note: Enrollment counts include first majors only.

TRENDS IN TOTAL ENROLLMENT FALL 2012-2016



TRENDS IN TOTAL ENROLLMENT BY SCHOOL Fall 2012 – 2016



ETHNICITY OF STUDENTS FALL 2012-2016

Undergraduate Race/Ethnicity	2012	2013	2014	2015	2016
White	4303	4391	4360	4405	4482
African-American/Black	363	324	345	378	380
Hispanic	666	742	854	830	857
Asian	579	611	681	690	741
Native American	8	10	15	17	12
Native Hawaiian*	25	19	20	21	14
Not Reported	504	477	410	368	260
Two or More Races*	81	63	45	30	25
Non-Resident Alien*	16	16	13	19	16
Total	6545	6653	6743	6758	6787

Graduate Race/Ethnicity	2012	2013	2014	2015	2016
White	471	471	417	428	436
African-American/Black	48	52	42	51	43
Hispanic	29	34	36	53	43
Asian	35	27	30	37	33
Native American	2	2	3	2	1
Native Hawaiian*	2	3	4	2	2
Not Reported	132	92	131	74	51
Two or More Races*	5	6	3	1	0
Non-Resident Alien*	1	0	0	0	0
Total	725	687	666	648	609

*Federal reporting requirements for ethnicity were revised in 2010. New categories for Native Hawaiian, Two or more races and Non-Resident Aliens were added, Other was removed.

Official Census Date enrollment counts

ETHNICITY OF STUDENTS BY SCHOOL FALL 2016

Undergraduate Race/Ethnicity

Undergraduate	African American	Asian	Hispanic	Native American	Native Hawaiian	Non Resident Alien	Not Reported	Two or more races	White	Total
School of Arts & Communications	41	55	91	2	0	0	23	3	580	795
School of Business	62	121	154	3	5	3	37	4	817	1206
School of Humanities & Social Sciences	112	121	217	0	1	1	55	8	1015	1530
School of Education	27	40	87	4	3	1	17	2	587	768
School of Engineering	20	72	75	1	2	3	15	0	393	581
School of Nursing Health & Exercise Science	43	62	76	0	2	0	26	3	407	619
School of Science	60	257	131	1	0	6	39	4	590	1088
Non-Matriculated /Visiting & Other	15	13	26	1	1	2	48	1	93	200
Total Undergraduate	380	741	857	12	14	16	260	25	4482	6787

Graduate Race/Ethnicity

Graduate	African American	Asian	Hispanic	Native American	Native Hawaiian	Non Resident Alien	Not Reported	Two or more races	White	Total
School of Humanities & Social Sciences	1	1	0	0	0	0	1	0	21	24
School of Education	31	18	38	1	2	0	26	0	338	454
School of Engineering	0	1	1	0	0	0	0	0	7	9
School of Nursing Health & Exercise Science	2	6	1	0	0	0	0	0	24	33
Non-Matriculated & Visiting	9	7	3	0	0	0	24	0	46	89
Total Graduate	43	33	43	1	2	0	51	0	436	609

Official Census Date enrollment counts.

ENROLLMENT BY GENDER – FALL 2012 - 2016 TOTAL COLLEGE

Undergraduate	2012	2013	2014	2015	2016
<i>Female</i>	3702	3802	3875	4011	3960
<i>Male</i>	2843	2851	2868	2747	2827
Total	6545	6653	6743	6758	6787
Graduate	2012	2013	2014	2015	2016
<i>Female</i>	584	580	555	535	500
<i>Male</i>	141	107	111	113	109
Total	725	687	666	648	609

ENROLLMENT BY GENDER – FALL 2012-2016 GRADUATE LEVEL – By SCHOOL

	2012	2013	2014	2015	2016
<i>School of Humanities & Social Sciences</i>					
<i>Graduate</i>	31	31	26	32	24
<i>Female</i>	23	24	21	24	11
<i>Male</i>	8	7	5	8	13
<i>School of Education</i>					
<i>Graduate</i>	520	543	496	529	454
<i>Female</i>	424	461	413	434	381
<i>Male</i>	96	82	83	95	73
<i>School of Engineering Graduate</i>	-	-	-	-	9
<i>Female</i>	-	-	-	-	7
<i>Male</i>	-	-	-	-	2
<i>School of Nursing, Health & Exercise Science</i>					
<i>Graduate</i>	26	28	26	34	33
<i>Female</i>	23	26	20	32	28
<i>Male</i>	3	2	6	2	5

Official Census Date enrollment counts

ENROLLMENT BY GENDER – FALL 2012-2016
UNDERGRADUATE LEVEL – BY SCHOOL

	2012	2013	2014	2015	2016
School of Arts & Communications	705	746	721	743	795
<i>Female</i>	411	446	429	460	506
<i>Male</i>	294	300	292	283	289
School of Business	1139	1162	1219	1164	1206
<i>Female</i>	466	453	471	466	462
<i>Male</i>	673	709	748	698	744
School of Education	713	747	786	770	768
<i>Female</i>	667	699	723	729	721
<i>Male</i>	46	48	43	41	47
School of Engineering	546	529	525	555	581
<i>Female</i>	122	127	129	138	143
<i>Male</i>	424	402	396	417	438
School of Humanities & Social Sciences	1674	1718	1719	1674	1530
<i>Female</i>	1028	1085	1078	1096	986
<i>Male</i>	646	633	641	578	544
School of Nursing Health & Exercise Science	530	500	514	537	619
<i>Female</i>	382	363	369	402	469
<i>Male</i>	148	137	145	135	150
School of Science	1092	1060	1003	1058	1088
<i>Female</i>	524	522	518	571	577
<i>Male</i>	568	538	485	487	511
Other Undergraduate: <i>Non-Matriculated, Undecided, Visiting, Independent Studies</i>	146	191	276	257	200
<i>Female</i>	102	107	158	149	96
<i>Male</i>	44	84	118	108	104

Official Census Date Enrollment Counts

ENROLLMENT BY RESIDENCE (In-State/Out-of-State)
FALL 2012 - 2016

Undergraduate	2012	2013	2014	2015	2016
<i>NJ Resident</i>	6178	6269	6289	6338	6376
<i>Non-Resident</i>	367	384	454	420	411
Total	6545	6653	6743	6758	6787
Graduate	2012	2013	2014	2015	2016
<i>NJ Resident</i>	617	590	561	565	501
<i>Non-Resident</i>	108	97	105	83	108
Total	725	687	666	648	609
Residence By School	2012	2013	2014	2015	2016
Undergraduate School of Arts & Communications	705	746	721	743	795
<i>NJ Resident</i>	666	706	688	717	765
<i>Non-Resident</i>	39	40	33	26	30
Undergraduate School of Business	1139	1162	1219	1164	1206
<i>NJ Resident</i>	1095	1114	1172	1113	1144
<i>Non-Resident</i>	44	48	47	51	62
Undergraduate School of Education	713	747	766	770	768
<i>NJ Resident</i>	671	701	715	717	721
<i>Non-Resident</i>	42	46	51	53	47
Undergraduate School of Engineering	546	529	525	555	581
<i>NJ Resident</i>	508	482	477	487	516
<i>Non-Resident</i>	38	47	48	68	65
Undergraduate School of Humanities & Social Sciences	1674	1718	1719	1674	1530
<i>NJ Resident</i>	1602	1652	1658	1617	1478
<i>Non-Resident</i>	72	66	61	57	52
Undergraduate School of Nursing Health & Exercise Science	530	500	514	537	619
<i>NJ Resident</i>	492	459	481	489	562
<i>Non-Resident</i>	38	41	33	48	57
Undergraduate School of Science	1092	1060	1003	1058	1088
<i>NJ Resident</i>	1023	998	952	1002	1028
<i>Non-Resident</i>	69	62	51	56	60
Other Undergraduate: <i>Non-Matriculated, Undecided, Visiting</i>	146	191	276	257	200
<i>NJ Resident</i>	121	157	146	196	162
<i>Non-Resident</i>	25	34	130	61	38

**ENROLLMENT BY MAJOR
FALL 2012-2016**

Please use the following link to access tables that contain enrollment data for majors over the past five fall terms. The enrollment tables include enrollment by plan (1st Major) with breakouts for FT/PT, Race/Ethnicity, Gender, Academic Level, Second Major, and Sub-plan and are derived from the 10th day census date.

[FactBook PlanEnrollbyTermAY2012_2016](#)

**FIRST YEAR TO SECOND YEAR
RETENTION RATES FOR
ENTERING FIRST-TIME, FULL-TIME FRESHMAN
BY ETHNICITY
FALL 2010 – FALL 2016**

	Fall 2010	Fall 2011	Fall 2012	Fall 2013	Fall 2014	Fall 2015	5 YR AVG % Retained from cohort to 2nd Fall Term
Total # Freshmen in Cohort	1421	1371	1363	1404	1416	1454	--
African American	87.00%	95.24%	90.91%	91.94%	97.83%	92.05%	92.50%
Asian	96.18%	94.71%	94.87%	92.25%	92.96%	96.39%	94.56%
Hispanic	92.05%	92.81%	89.47%	92.93%	94.44%	93.81%	92.59%
Native American	87.50%	83.33%	100.00%	100.00%	100.00%	75.00%	90.97%
Native Hawaiian	100.00%	100.00%	83.33%	100.00%	100.00%	100.00%	97.22%
Not Reported	98.41%	96.30%	89.01%	98.81%	100.00%	90.57%	95.52%
White	95.64%	94.37%	95.26%	94.77%	94.47%	93.88%	94.73%
% Retained from Total Cohort to 2nd Fall Term	93.83%	93.82%	93.84%	94.31%	94.63%	93.67%	94.02%

**1st YEAR to 2nd YEAR RETENTION RATES BY SCHOOL
FALL 2010 – FALL 2016**

School	2011	2012	2013	2014	2015
Arts & Communication	86.96%	86.43%	91.02%	98.64%	96.05%
Business	93.04%	89.45%	90.00%	95.51%	95.02%
Education	86.67%	90.54%	90.32%	96.67%	93.33%
Engineering	78.10%	78.86%	84.62%	93.42%	95.71%
Humanities and Social Sciences	84.53%	85.20%	89.30%	93.37%	89.70%
Nursing, Health & Exercise Science	84.21%	82.08%	85.11%	91.35%	95.10%
Science	87.88%	83.58%	89.31%	94.14%	92.52%
All TCNJ	93.82%	93.84%	94.31%	94.63%	93.67%

Source: Official Census Date Enrollment/freshmen cohort data- % returning in School

**4 YEAR, 5 YEAR & 6 YEAR
GRADUATION RATES FOR
ENTERING FIRST-TIME FRESHMAN
BY ETHNICITY & GENDER
FALL 2006 – FALL 2010 COHORTS**

Entering Cohort Year	2006	2007	2008	2009	2010
Total Number in Cohort	1270	1297	1295	1283	1421
<i>% Graduating within 4 Years</i>	72%	73%	73%	73%	75%
<i>% Female</i>	77	78	76	77	78
<i>% Male</i>	66	64	67	65	71
<i>% African-American</i>	37	37	37	55	47
<i>% Asian</i>	86	76	84	78	82
<i>% Hispanic</i>	58	58	58	56	58
<i>% Native American</i>	100	100	0	0	100
<i>% Native Hawaiian/Pacific Islander</i>	0	0	25	80	50
<i>% Non-Resident Alien</i>	0	0	50	50	50
<i>% White</i>	76	78	76	75	79
<i>% Two or More Races</i>	0	100	77	83	69
<i>% Not Reported</i>	75	72	81	67	81
<i>% Graduating within 5 Years</i>	85%	83%	84%	83%	85%
<i>% Female</i>	87	86	86	87	86
<i>% Male</i>	82	79	81	78	83
<i>% African-American</i>	59	56	60	71	62
<i>% Asian</i>	93	83	91	84	90
<i>% Hispanic</i>	72	71	77	73	75
<i>% Native American</i>	100	100	0	0	100
<i>% Native Hawaiian/Pacific Islander</i>	0	79	75	100	100
<i>% Non-Resident Alien</i>	0	0	100	50	50
<i>% White</i>	89	87	87	86	87
<i>% Two or More Races</i>	0	87	89	92	79
<i>% Not Reported</i>	83	84	87	81	90
<i>% Graduating within 6 Years</i>	87%	85%	87%	85%	87%
<i>% Female</i>	88	87	88	88	87
<i>% Male</i>	85	81	85	80	86
<i>% African-American</i>	66	64	69	74	70
<i>% Asian</i>	93	83	91	85	92
<i>% Hispanic</i>	77	76	81	75	78
<i>% Native American</i>	100	100	0	0	100
<i>% Native Hawaiian/Pacific Islander</i>	0	83	100	100	100
<i>% Non-Resident Alien</i>	0	0	100	50	50
<i>% White</i>	90	88	89	87	89
<i>% Two or More Races</i>	0	100	90	92	79
<i>% Not Reported</i>	85	84	88	82	90

Source: IPEDS Graduate Rate Survey first-time freshmen cohorts

**DEGREES GRANTED BY SCHOOL AND DEGREE TYPE
2011-2016**

School	Degree	2011-12	2012-13	2013-14	2014-15	2015-16
Arts & Comm UGRD	BA	112	98	118	120	142
Arts & Comm UGRD	BFA	46	28	35	28	30
Arts & Comm UGRD	BM	15	20	25	28	15
Business UGRD	BA	7	6	5	4	5
Business UGRD	BS	285	272	265	321	341
Humanities & Soc. Sci GRAD	MA	15	9	19	14	16
Humanities & Soc. Sci UGRD	BA	395	376	392	381	393
Humanities & Soc. Sci UGRD	BS	34	40	46	48	45
Education GRAD	CER	30	26	31	30	25
Education GRAD	EDS	5	3	3	1	6
Education GRAD	MA	43	35	45	35	39
Education GRAD	MAT	111	124	107	104	111
Education GRAD	MED	263	178	207	204	215
Education GRAD	MS	7	6	1	0	0
Education GRAD	SCT	102	86	111	187	146
Education UGRD	BS	162	171	166	157	188
Engineering UGRD	BABM	4	1	0	0	0
Engineering UGRD	BS	20	8	4	5	9
Engineering UGRD	BSBM	21	27	26	24	23
Engineering UGRD	BSCE	19	32	39	24	21
Engineering UGRD	BSCO	9	6	10	12	11
Engineering UGRD	BSEE	10	5	13	16	13
Engineering UGRD	BSES	0	3	3	1	7
Engineering UGRD	BSME	23	33	39	24	21
Independent Studies UGRD	BA	14	8	9	11	12
Nursing, Hlth, Ex. Sci GRAD	MED	2	1	1	0	0
Nursing, Hlth, Ex. Sci GRAD	MSN	9	10	10	5	8
Nursing, Hlth, Ex. Sci GRAD	SCT	0	1	0	0	0
Nursing, Hlth Ex. Sci UGRD	BS	72	63	63	68	71
Nursing, Hlth Ex. Sci UGRD	BSN	45	68	63	65	72
Science UGRD	BA	59	46	57	48	42
Science UGRD	BS	216	149	203	155	186

Source: CIE Graduation Statistics (defined by Federal IPEDS standards – July 1 through June 30).

**DEGREES GRANTED BY SCHOOL AND PROGRAM
2012 – 2016**

Use the link below to access tables containing the number of degrees awarded by School, plan, race/ethnicity and gender from 2012-13 up to 2016-17.

[FactBookDegreesbyTerm1126_1174](#)

EMPLOYEES BY IPEDS OCCUPATIONAL CATEGORY 2016 - 2017

Number of Staff by Employment Status and Occupational Category			
Academic Year 2016 - 2017			
Occupational Category	Reported Values		FTE Staff
	# of Full-time Staff	# of Part-time Staff	
Total Number of Staff	1185	545	1367
Instructional Staff	355	497	521
<i>Librarians, Curators, Archivists</i>	34	5	36
<i>Student & Academic Affairs and other Education Services</i>	94	16	99
Management Occupations	101	0	101
<i>Business & Financial Operations</i>	64	1	64
<i>Computer, Engineering & Science Occupations</i>	42	4	43
<i>Community, Social Service, Legal, Arts, Design, Entertainment, Sports and Media Occupations</i>	109	15	114
<i>Healthcare Practitioners & Technical Occupations</i>	17	0	17
Service Occupations	62	0	62
<i>Office and Administrative Support</i>	110	7	112
<i>Natural Resources, Construction, and Maintenance Occupations</i>	197	0	197

Source: IPEDS Human Resources Survey 2016-17

EMPLOYEES BY GENDER FALL 2012 - 2016

	2012	2013	2014	2015	2016
<u>Faculty - Full-Time</u>	349	347	356	355	355
Male	175	175	174	167	167
Female	174	172	182	188	188
<u>Faculty - Part-Time/Adjuncts</u>	444	474	464	498	497
Male	209	215	218	226	218
Female	235	259	246	272	279
<u>Staff - Full-Time</u>	677	683	758	765	830
Male	302	310	333	335	370
Female	375	373	425	430	460
<u>Staff - Part-Time</u>	12	13	87	35	48
Male	3	3	47	12	20
Female	9	10	40	23	28
Total Employees	1,482	1,517	1,665	1,653	1,730
Male	689	703	772	740	775
Female	793	814	893	913	955

Source: IPEDS Human Resources Survey

NUMBER OF FACULTY BY RANK AND TENURE STATUS FALL 2012-FALL 2016

	2012			2013			2014			2015			2016		
	Ten/ Ten Trk	Non Ten	Total	Ten/ Ten Trk	Non Ten	Total	Ten/ Ten Trk	Non Ten	Total	Ten/ Ten Trk	Non Ten	Total	Ten/ Ten Trk	Non Ten	Total
Full-Time:															
Professor	91	0	91	90	0	90	96	0	96	98	0	98	106	0	98
Associate Professor	138	1	139	140	2	142	149	1	150	146	1	147	142	1	147
Assistant Professor	95	17	112	100	10	110	85	19	104	91	15	106	91	12	106
Instructor	0	7	7	0	5	5	0	6	6	0	4	4	0	3	4
Total Full-Time Faculty	324	25	349	330	12	347	330	26	356	335	20	355	339	16	355
Total Part-Time Faculty	0	20	20	0	17	17	0	21	21	0	16	16	0	19	19
Total	324	45	369	330	29	364	330	47	377	335	36	371	339	35	374

Part-Time Faculty includes regular part-time faculty. Adjuncts are not included.

Source: EIS HR Data

**TENURE STATUS AMONG FULL-TIME TENURE TRACK FACULTY
FALL 2012 - FALL 2016**

	2012		2013		2014		2015		2016	
	Tenured/ Eligible	% Tenured	Tenured/ Eligible	% Tenured	Tenured/ Eligible	% Tenured	Tenured/ Eligible	% Tenured	Tenured/ Eligible	% Tenured
<i>Professor</i>	89/91	97.8%	90/90	100%	96/96	100%	98/98	100%	106/106	100%
<i>Associate Professor</i>	113/138	81.9%	136/140	97.1%	142/149	95.3%	141/146	96.6%	133/142	93.7%
<i>Assistant Professor</i>	36/95	37.9%	57/100	57.0%	36/85	42.4%	32/91	35.2%	20/91	22.0%
Total	238/324	73.5%	283/330	85.8%	274/330	83.0%	271/335	80.9%	259/339	76.4%

*Key: % Tenured = # Tenured/# Eligible * 100.*

Note: Counts include active faculty.

Source: EIS/HR Faculty Data

**AVERAGE SALARY OF FULL-TIME FACULTY BY RANK
ACADEMIC YEARS 2012-13 THROUGH 2016-17**

	2012-13		2013-14		2014-15		2015-16		2016-17	
	Average Salary \$	% Increase from Previous Year	Average Salary \$	% Increase from Previous Year	Average Salary \$	% Increase from Previous Year	Average Salary \$	% Increase from Previous Year	Average Salary \$	% Increase from Previous Year
<i>Professor</i>	\$116,382	0.8%	\$118,454	2.9%	\$118,176	1.2%	\$120,493	4.6%	\$118,691	0.14%
<i>Associate Professor</i>	\$92,609	0.9%	\$94,650	3.2%	\$96,938	4.8%	\$97,216	2.9%	\$96,540	1.2%
<i>Assistant Professor</i>	\$74,075	0.8%	\$77,631	4.8%	\$78,741	4.9%	\$80,696	1.5%	\$80,268	1.4%
<i>Instructor</i>	\$75,491	0.0%	\$72,275	8.3%	\$71,079	9.0%	\$75,552	4.5%	\$76,208	0.0%

Note: Includes full-time continuing faculty from previous year.

Percentage of increase from previous year reflects the percentage of change in total salary expenditures for continuing faculty.

Source: CIE/AAUP Annual Survey of Faculty Compensation

STATEMENT OF OPERATING ACTIVITIES FY 2012-2016

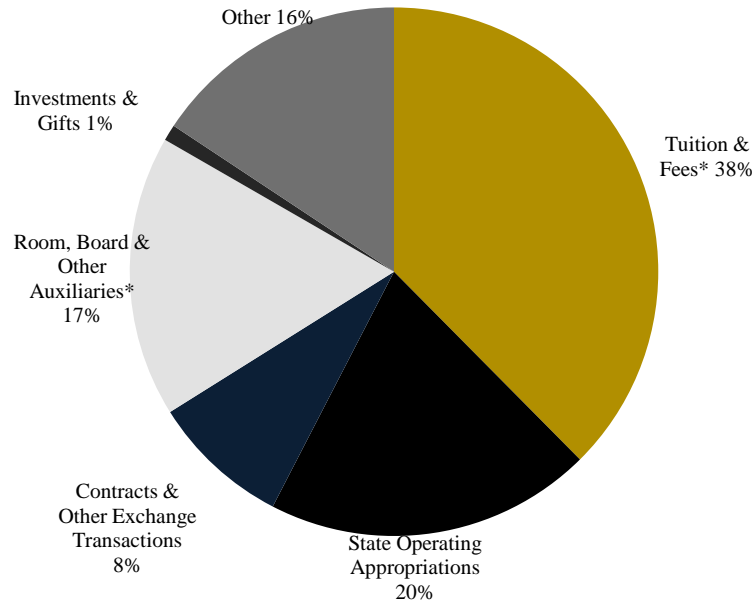
	FY12	FY13	FY14	FY15	FY16
Operating Revenue and Additions:					
Tuition & Fees, net of discounts and allowances	\$84,617,000	\$88,326,000	\$90,913,000	\$94,951,000	\$98,482,000
State operating appropriations	\$54,408,000	\$53,311,000	\$53,079,000	\$53,847,000	\$52,439,000
Contracts & other exchange transactions	\$19,937,000	\$21,169,000	\$20,048,000	\$21,127,000	\$22,294,000
Room, board & other auxiliaries, net of discounts and allowances	\$41,709,000	\$40,678,000	\$46,083,000	\$44,986,000	\$45,145,000
Investments & gifts	\$556,000	\$1,448,000	\$6,270,000	\$3,762,000	\$2,598,000
Other	\$3,274,000	\$3,850,000	\$8,777,000	\$18,841,000	\$41,119,000
Total operating revenues and support	\$204,501,000	\$208,782,000	\$225,170,000	\$237,514,000	\$262,077,000
Total Discounts and Allowances	\$25,685,000	\$26,882,000	\$27,349,000	\$26,521,000	\$25,649,000
Operating Expenses and Transfers:					
Instruction & Academic support	\$101,405,000	\$103,702,000	\$105,725,000	\$111,073,000	\$108,921,000
Sponsored activities	\$20,686,000	\$21,768,000	\$23,617,000	\$24,473,000	\$27,294,000
Student services	\$20,705,000	\$20,881,000	\$22,527,000	\$24,981,000	\$26,573,000
Student aid	\$902,000	\$1,024,000	\$1,039,000	\$1,293,000	\$1,302,000
Institutional Support	\$16,123,000	\$17,769,000	\$19,220,000	\$24,102,000	\$23,692,000
Room, board & other auxiliaries	\$33,775,000	\$35,087,000	\$37,401,000	\$36,999,000	\$36,709,000
Operation and maintenance of plant*	\$0	\$0	\$0	\$0	\$0
Transfers & other	\$1,289,000	\$292,000	\$2,005,000	\$782,000	\$1,744,000
Total operating expenses and transfers	\$194,885,000	\$200,523,000	\$211,534,000	\$223,703,000	\$226,235,000

Note: As of FY09-10, Operation and maintenance of plant expenses were reallocated within other areas and no longer a separate item under Expenses.

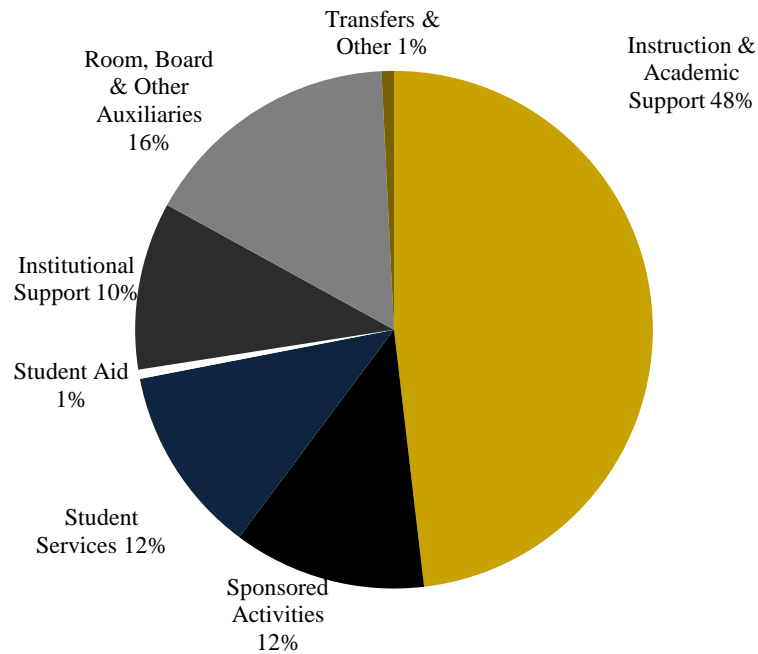
Source: CIE/IPEDS Finance Survey, GASB

OPERATING REVENUE, EXPENSES AND TRANSFERS FISCAL YEAR 2016

REVENUE (\$262,077,000)



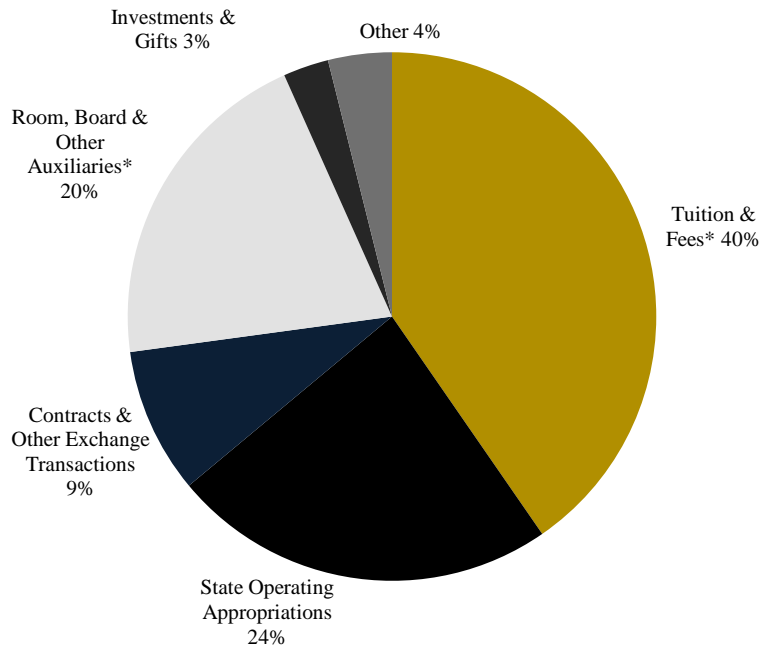
EXPENSES & TRANSFERS (\$226,235,000)



Source: CIE/IPEDS 2016-17 Finance Survey, GASB

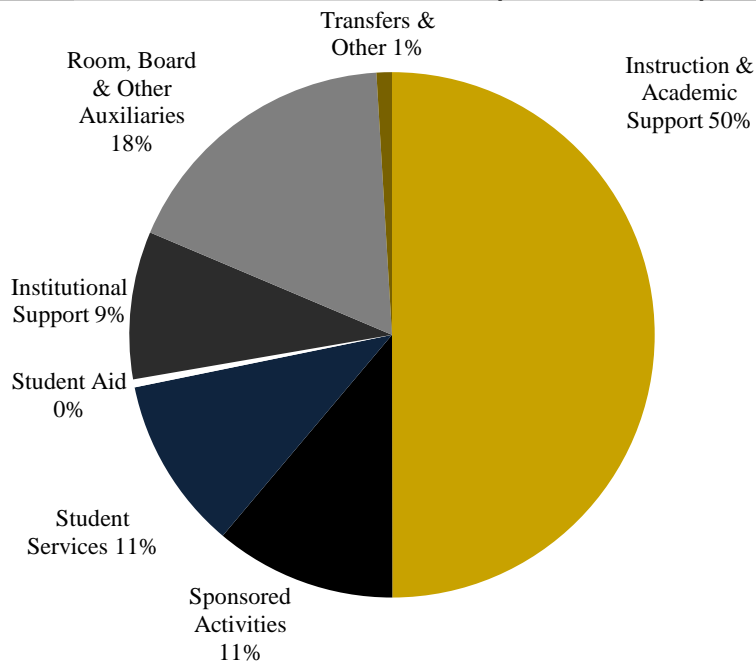
OPERATING REVENUE, EXPENSES AND TRANSFERS FISCAL YEAR 2015

REVENUE (\$225,170,000)



**Net of Scholarship & Fellowship Allowance*

EXPENSES & TRANSFERS (\$211,534,000)



Source: CIE/IPEDS 2014-15 Finance Survey, GASB

CHANGE IN NET ASSETS FY 2013 - FY 2016

	FY13	FY14	FY15	FY16
Assets:				
Current Assets	\$103,666,000	\$120,239,000	\$127,811,000	\$126,811,000
Capital Assets, net	\$592,234,000	\$587,655,000	\$601,473,000	\$638,881,000
Other noncurrent assets	\$34,963,000	\$65,599,000	\$64,571,000	\$53,879,000
Total assets	\$730,863,000	\$773,493,000	\$793,855,000	\$819,571,000
Deferred outflow of resources	\$23,806,000	\$22,559,000	\$25,893,000	\$47,366,000
Liabilities:				
Current liabilities	\$38,850,000	\$47,537,000	\$55,912,000	\$54,970,000
Noncurrent liabilities	\$364,933,000	\$389,375,000	\$497,877,000	\$516,552,000
Total liabilities	\$403,783,000	\$436,912,000	\$553,789,000	\$571,522,000
Deferred inflows of resources	-	-	\$3,537,000	\$724,000
Net Assets:				
Invested in capital assets, net of related debt	\$229,996,000	\$229,359,000	\$251,027,000	\$283,072,000
Restricted expendable	\$2,298,000	\$11,641,000	\$11,383,000	\$12,607,000
Unrestricted	\$118,592,000	\$118,140,000	\$12,000	(\$988,000)
Total net position	\$350,886,000	\$359,140,000	\$262,422,000	\$294,691,000
<i>Ratio of current assets to current liabilities</i>	2.67	2.53	2.29	2.31

Source: Treasurer's Office, TCNJ

(Amounts for years prior to FY15 have not been restated to reflect the effect of GASB 68)

**EXTERNALLY SPONSORED ACTIVITIES
AWARDED GRANTS – FY2016**

Awarded - FY2016		
SCHOOL	DEPARTMENT	TOTAL AWARDS
Art & Communications	TCNJ Center for the Arts	\$6,350.00
	Journalism & Professional Writing	\$20,000.00
School of Art & Communications Total		\$26,350.00
Business	SBDC	\$198,985.00
	Economics	\$48,891.00
School of Business Total		\$325,923.15
Centers	CELR	\$1,626,088.00
	NJ Sustainable Self Institute	\$1,521,370.00
	The Liberal Learning Center	\$67,296.00
Community Centers Total		\$3,214,754.00
Education	Special Education	\$1,298,594.87
	Ed. Admin. & Secondary Ed.	\$381,864.00
	Counselor Education	\$27,500.00
School of Education Total		\$1,707,958.87
Engineering	Civil Engineering	\$349,426.66
	Biomedical Engineering	\$8,000.00
	Electrical/Computer Engineering	\$50,000.00
	Mechanical Engineering	\$164,986.00
	Tech Studies - STEM	\$146,500.00
School of Engineering Total		\$718,912.66
School of Nursing Health & Exercise Total	Nursing	\$433,830.50
Science	Biology	\$761,344.00
	Chemistry	\$25,000.00
	Computer Science	\$14,673.00
	Mathematics & Statistics	\$14,710.00
	Physics	\$1,204,000.00
School of Science Total		\$2,019,727.00
Student Affairs Total	Health & Wellness	\$621,773.00
College of New Jersey Total		\$9,069,229.18

Source: Director of Grants

**UNDERGRADUATE TUITION, FEES, ROOM AND BOARD CHARGES AND ANNUAL RATE OF INCREASE,
ACADEMIC YEARS 2006-07 UP TO 2016-17**

Year	Tuition				Fees		Room & Board*	
	Resident	Non-Resident						
	\$	% Increase	\$	% Increase	\$	% Increase	\$	% Increase
2006-07	7,615	8.0%	14,161	15.0%	2,938	4.7%	8,843	4.6%
2007-08	8,072	6.0%	15,295	8.0%	3,235	10.1%	9,242	4.5%
2008-09	8,718	8.0%	16,825	10.0%	3,590	11.0%	9,612	4.0%
2009-10	8,980	3.0%	17,666	5.0%	3,742	4.2%	9,996	4.0%
2010-11	9,340	4.0%	18,726	6.0%	3,953	5.6%	10,358	3.6%
2011-12	9,760	4.5%	19,569	4.5%	4,127	4.4%	10,677	3.1%
2012-13	10,102	3.5%	20,254	3.5%	4,276	3.6%	10,998	3.0%
2013-14	10,355	2.5%	20,760	2.5%	4,375	2.3%	11,343	3.0%
2014-15	10,562	2.0%	21,175	2.0%	4,462	2.0%	11,676	2.9%
2015-16	10,879	3.0%	21,810	3.0%	4,587	2.8%	12,498	7.0%**
2016-17	11,124	2.3%	22,301	2.3%	4,670	1.8%	12,881	3.1%***

Source: CIE/Common Data Set

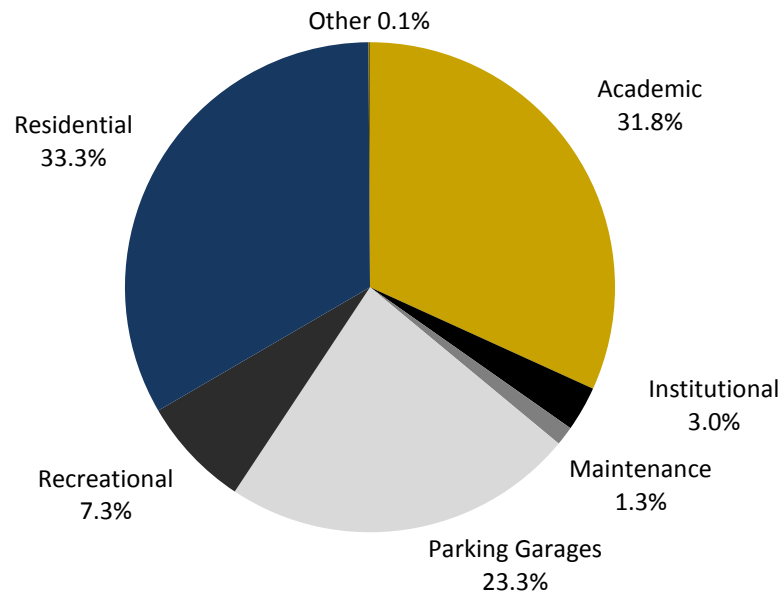
* Board = Carte Blanche 'C' plan

** Board charges for 2015-16 reflect pricing for Carte Blanche 'B' plan

*** Board Charges for 2016-17 reflect pricing for 'Ala Carte I' plan

CAMPUS BUILDING INVENTORY 2016-17

	SqFt. %	Sq.Ft.	#Buildings
Academic	31.8%	1,095,515	15
Institutional	3.0%	104,148	2
Maintenance	1.3%	43,111	3
Parking Garages	23.3%	803,684	5
Recreational	7.3%	248,753	5
Residential	33.3%	1,148,021	15
Other	0.1%	3,055	1
Total Campus Buildings	100.0%	3,446,287	46



Source: TCNJ Facilities, Residential Education Offices

THE COLLEGE OF NEW JERSEY LIBRARY

Facilities and Services

The College of New Jersey Library, provides high-quality information resources, expertise and a learning environment that enhance the search for knowledge and understanding. The Library serves as an intellectual, cultural and social center for the College, empowering TCNJ community members to become self-directed, lifelong learners and responsible citizens.

The five-story, 135,000 square-foot facility, in addition to housing the traditional library collections and services, provides 26 group study rooms, a café, a late-night study area, and a 105-seat multi-purpose auditorium.

TCNJ Library Collections:

Archives: Materials documenting the college's history, dating from the Normal School era in the mid-1800's to the present. Materials range from early annual reports and a historic textbook collection, through college publications, to photographs, slides, and memorabilia.

Children's/Young Adults Collection: This specialized area of over 28,000 titles contains many award winning fiction and non-fiction resources for young people from preschool age through senior high school. Included are reference materials for school age students including: folk tales, poetry, subject guides to picture books, bibliotherapy, selected summaries, review sources and encyclopedias.

Curriculum & K-12 Elementary – High School Texts Collections: The Curriculum Reference Collection contains several thousand curriculum guides on microfiche from the Kraus Curriculum Development Library. Behavior objective guides by subject, multiple titles in the series, *Educators Guide to Free Materials*, and Scope and Sequence charts.

General Collection: The General Collection consists of more than 562,000 books that have been selected by faculty and subject specialist librarians to support course offerings of the college and to provide a broad representative collection of titles across many disciplines. This growing collection includes fiction, non-fiction, and children's/youth books.

Music & Media: The library's Music and Media Collections consist of ca. 7,500 volumes of printed music, ca. 21,000 sound recordings in LP and CD format, and ca. 13,000 video recordings in DVD, VHS and U-Matic formats.

Periodicals: The library has access to over 30,000 periodical titles, which are available in a variety of formats: print, online, and microfilm/microfiche.

Reference: The Reference Collection numbers approximately 11,000 volumes and includes general encyclopedias, almanacs, dictionaries, atlases, and the like, as well as a large collection of subject specific reference works.

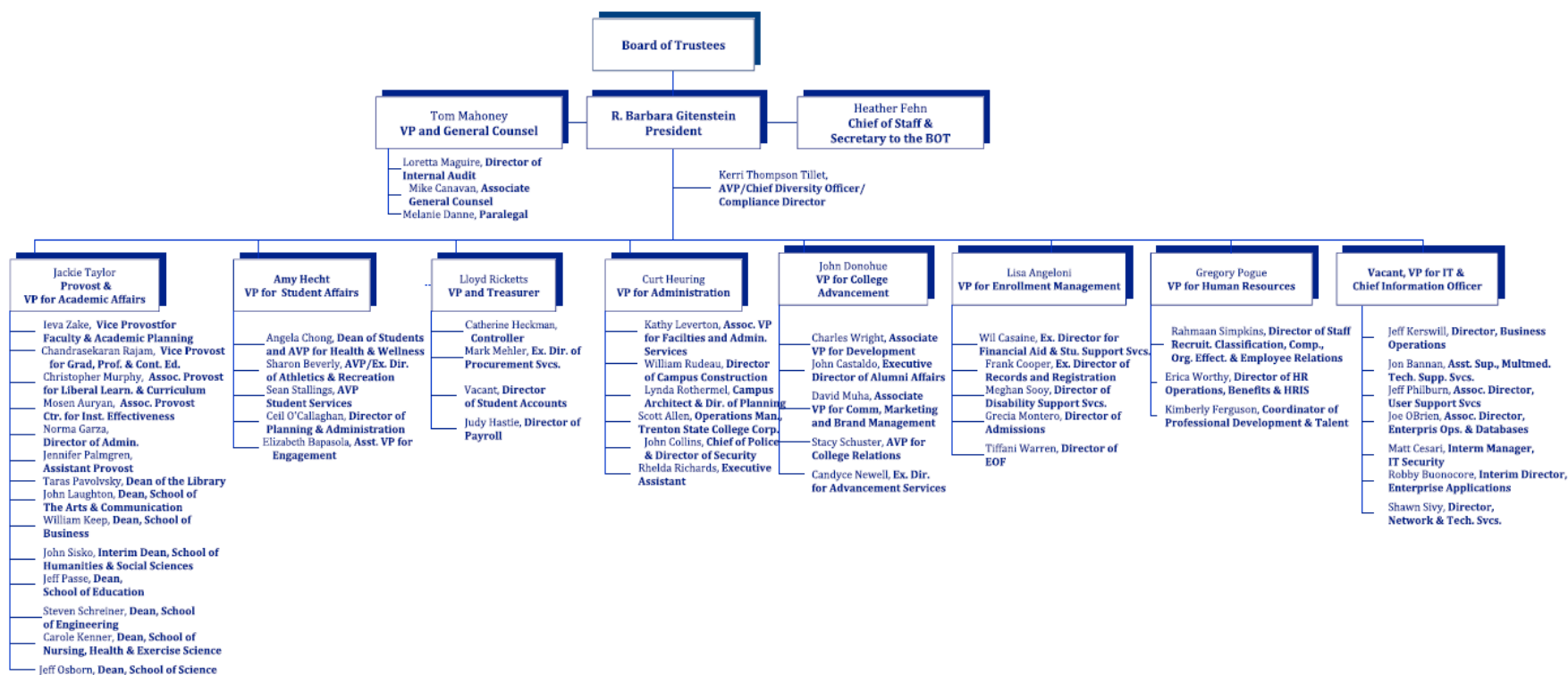
Library Holdings (*Fiscal Year 2016*):

Books, serial backfiles, and government documents :	841,070
<i>(including bound periodicals & newspapers; physical & digital/electronic)</i>	
Current serial subscriptions:	86,024
<i>(paper, microform & electronic titles)</i>	
Video and audio (units):	58,206
Online electronic database access:	122
Total Circulation:	47,963

**THE COLLEGE OF NEW JERSEY
REGIONAL, NATIONAL, AND SPECIALIZED ACCREDITORS**

Accreditation Board for Engineering and Technology (**ABET**)
American Chemical Society (**ACS**)
Association to Advance Collegiate Schools of Business (**AACSB**)
Association of Small Business Development Centers (**SBDC**)
Commission on Collegiate Nursing (**CCNE**)
Computing Accreditation Commission of Accreditation Board for Engineering and Technology (**CAC**)
Council on Education of the Deaf (**CED**)
Council for Accreditation of Counseling & Related Education Programs (**CACREP**)
Engineering Accreditation Commission of Accreditation Board for Engineering and Technology (**EAC**)
Middle States Commission on Higher Education (**MSCHE**)
National Association of Schools of Music (**NASM**)
Council for the Accreditation of Educator Preparation (**CAEP**)
National League for Nursing Accreditation Commission (**NLNAC**)

ADMINISTRATIVE ORGANIZATIONAL CHART 2015



MEMBERS OF THE BOARD OF TRUSTEES

AS OF SEPTEMBER 2016

Ex-Officio Members

Dr. R. Barbara Gitenstein, PhD, *President, Ex-Officio*

Officers of the Board

Mr. Jorge A. Caballero, *Chair*

Ms. Susanne Svizeny, *Vice Chair*

Dr. Robert A. Altman, *Secretary*

Appointed Members

Mr. Bradley S. Brewster

Mr. Miles Powell II

Mr. Christopher R. Gibson, Esq.

Ms. Eleanor V. Horne

Mrs. Rosie Hymerling

Ms. Treby Williams

Dr. Frederick Keating

Mr. Albert M. Stark

Mr. Brian Markison

Dr. Joshua M. Zeitz

Student Members

Ms. Dana Disarno, *Student Trustee*

Ms. Priscilla Nunez, *Alternate Student Trustee*

Faculty Representatives

Dr. Jana Gevertz

Dr. Morton Winston

Staff Representatives

Mr. Joseph O'Brien

Mr. Timothy Grant

Equal Employment Opportunity & Diversity/Affirmative Action

The College of New Jersey is committed to equal opportunity, affirmative action and diversity. The College values diversity and is actively engaged in enriching the diversity of its faculty, staff and students. Central to the College's mission is creating a climate that is inclusive and respectful to everyone on campus. The College of New Jersey does not discriminate on the basis of race, creed, color, national origin, nationality, ancestry, age, sex/gender (including pregnancy), marital status, civil union status, domestic partnership status, familial status, religion, affectional or sexual orientation, gender identity or expression, atypical hereditary cellular or blood trait, genetic information, liability for service in the Armed Forces of the United States, or disability.