



Facts & Institutional Figures

Institutional Research and Analytics

A 3D graphic consisting of several overlapping, semi-transparent blue and grey rectangular blocks arranged in a row. The text "2023 - 2024" is centered on the front face of the middle block.

2023 - 2024

The College of New Jersey

Facts & Institutional Figures

Prepared By:

Office of Institutional Research and Analytics

Marie Tuscano

Executive Director

tuscano@tcnj.edu

Rob Varghese

Business Intelligence Manager

varghesr@tcnj.edu

Jennifer Sizoo

Research Analyst

sizoo@tcnj.edu

Institutional Research and Analytics Homepage: <http://ira.tcnj.edu>

Contents

Mission & Vision	4
At A Glance	5
SYNOPSIS OF UNDERGRADUATE DEGREE PROGRAMS AND MAJORS	7
SYNOPSIS OF GRADUATE DEGREE PROGRAMS AND MAJORS	9
TOP 20 MOST POPULAR UNDERGRADUATE MAJORS	11
AVERAGE SCHOLASTIC APTITUDE TEST SCORES BY ADMIT TYPE FOR FIRST-TIME FRESHMAN	12
FIRST-TIME FRESHMAN ADMISSIONS ACTIVITY	13
DISTRIBUTION OF COMPLETED ADMISSIONS APPLICATIONS AND ACCEPTED OFFERS	14
ENROLLMENT BY SCHOOL AND ATTENDANCE STATUS	15
TRENDS IN TOTAL ENROLLMENT	17
ETHNICITY OF STUDENTS	18
COLLEGE ENROLLMENT BY GENDER	20
UNDERGRADUATE ENROLLMENT BY GENDER AND RESIDENCE STATUS	21
ENROLLMENT BY MAJOR	22
1st TO 2nd YEAR RETENTION FOR ENTERING FIRST-TIME, FULL-TIME FRESHMEN BY SCHOOL AND ETHNICITY	24
GRADUATION RATES FOR ENTERING FIRST-TIME, FULL-TIME FRESHMAN ETHNICITY AND GENDER	25
DEGREES GRANTED BY SCHOOL, DEGREE TYPE AND MAJOR	26
EMPLOYEES BY ETHNICITY AND IPEDS OCCUPATIONAL CATEGORY	28
EMPLOYEES BY GENDER	29
NUMBER OF FACULTY BY RANK AND TENURE STATUS	30
TENURE STATUS AMONG FULL-TIME TENURE TRACK FACULTY	31
AVERAGE TOTAL COMPENSATION OF FULL-TIME FACULTY BY RANK	32
STATEMENT OF OPERATING ACTIVITIES	33
OPERATING REVENUE, EXPENSES AND TRANSFERS	34
CHANGE IN NET ASSETS	36

EXTERNALLY SPONSORED ACTIVITIES	37
UNDERGRADUATE TUITION, FEES, ROOM AND BOARD CHARGES PER YEAR AND ANNUAL RATE OF INCREASE	38
BUILDING INVENTORY	39
COLLEGE LIBRARY	40
THE COLLEGE OF NEW JERSEY REGIONAL, NATIONAL, AND SPECIALIZED ACCREDITORS	41
ADMINISTRATIVE ORGANIZATION CHART	42
BOARD OF TRUSTEES	43



Mission & Vision

MISSION STATEMENT

The College of New Jersey, founded in 1855 as the New Jersey State Normal School, is primarily an undergraduate and residential college with targeted graduate programs. Grounded in the liberal arts, TCNJ's personalized, collaborative, and rigorous education engages students at the highest level within and beyond the classroom. TCNJ believes in the transformative power of education to develop critical thinkers, responsible citizens, and lifelong learners and leaders. The College empowers its diverse students, staff and faculty to sustain and enhance their communities both locally and globally.

VISION

TCNJ will offer an unparalleled education in a vibrant, collaborative and inclusive community of learners who will make a distinct mark on the world. By following our values, we will serve as a national exemplar of public higher education, and we will do this while being committed to accessibility and affordability.



At A Glance

HISTORY/LOCATION

1855 New Jersey State Normal School
1908 New Jersey State Normal School at Trenton
1929 New Jersey State Teachers College and State Normal School at Trenton
1937 New Jersey State Teachers College at Trenton
1958 Trenton State College
1996 The College of New Jersey

The College of New Jersey (TCNJ) is a highly selective institution that has earned national recognition for its commitment to excellence. TCNJ currently is ranked as the No. 1 public institution in the northern region of the country by U.S. News & World Report, and is considered a best value in higher education by both Princeton Review and Kiplinger's Personal Finance. TCNJ was also awarded, in 2006, a Phi Beta Kappa chapter, an honor shared by less than 10 percent of colleges and universities nationally.

The College of New Jersey's academic tradition reaches back to 1855 when it was established by the state legislature as the New Jersey State Normal School. It was the first teacher training school in the state and the ninth in the nation. Governor Rodman Price, sometimes called the founder of the New Jersey Normal School, promoted the idea of a training institute for New Jersey's teachers and mobilized support among influential state leaders.

Originally located on Clinton Avenue in Trenton, the Normal School flourished in the latter 1800s, expanding both its academic offerings and physical facilities. In 1925, the first four-year baccalaureate degree program was established. This change marked the beginning of TCNJ's transition from a normal school to a teachers' college and was accompanied by a change in physical surroundings. In 1928, a beautiful 210-acre tract of land in Ewing Township was purchased as a new site for the College.

Graduate study was instituted at the College in 1947, and accreditation from various national associations was forthcoming in the 1950s. The enactment of the Higher Education Act of 1966 paved the way for TCNJ to become a multipurpose institution by expanding its degree programs into a variety of fields other than education. By 1972, seventy percent of entering students were selecting non-teaching majors.

In the 1970s, a period of declining enrollments nationwide, the College decided to raise, rather than lower, its already high standards. Since that time, the academic profile of entering classes has continued to rise and as a result, the College has become one of the most competitive schools of its kind in the nation. Today the College provides academically prepared students with a challenging undergraduate education and a rewarding residential experience, small classes, and a prestigious faculty.

ACADEMIC SCHOOLS, PROGRAMS AND DEGREES

The College of New Jersey emphasizes the undergraduate experience. A strong liberal arts core forms the foundation for a wealth of degree programs offered through TCNJ's seven schools—Arts & Communication; Business; Humanities & Social Sciences; Education; Science; Nursing, Health, & Exercise Science; and Engineering. The College is enriched by an honors program and extensive opportunities to study abroad, and its award-winning First-Year Experience and freshman orientation programs have helped make its retention and graduation rates among the highest in the country.

CAMPUS

Known for its natural beauty, the College's campus is set on 289 tree-lined acres in suburban Ewing Township. The College has 39 major buildings, including a state-of-the-art library; 14 residence halls that accommodate 3,600 students; an award-winning student center; more than 20 academic computer laboratories; a full range of laboratories for nursing, microscopy, science, and technology; a music building with a 300-seat concert hall; and a collegiate recreation and athletic facilities complex. TCNJ has a full-time undergraduate enrollment of approximately 6,200 students (95 percent from New Jersey).

STUDENT LIFE

The College of New Jersey encourages students to expand their talents and skills through more than 150 organizations that are open to students. These groups range from performing ensembles and professional and honor societies to student publications, Greek organizations, as well as intramural and club sports. The College also offers numerous leadership opportunities through the Student Finance Board, Student Government Association, and Residence Hall Government to name a few.

ATHLETICS

High achievement and scholarship in the classroom have been mirrored by the success of The College of New Jersey's varsity student-athletes. Since the 1978–79 Lions wrestling team captured the College's first National Collegiate Athletic Association (NCAA) team championship, TCNJ has established itself as one of the nation's most successful Division III (non-athletic scholarship) programs. Since 1979, The College of New Jersey has amassed a total of 39 Division III crowns in six different sports. That number is the third most NCAA National Championships in Division III and ranks 13th across all divisions. In addition, the Lions have posted 32 runner-up awards, giving the College an aggregate of 71 first- and second-place finishes. The Lions have also produced 54 Division III CoSIDA Academic All-Americans.

As impressive as the overall athletic record is, TCNJ's accomplishment as a leader in women's sports is even greater. Since NCAA Championships were initiated for women in 1981, only TCNJ has won 32 Division III team championships. The total does not include the Lions' lacrosse championship in 1981 or the softball championships in 1980 and 1981, which were sponsored by the AIAW (Association for Intercollegiate Athletics for Women) prior to women's sports inclusion in the NCAA. In the fall of 1999, TCNJ's women's athletic program was voted as the top Division III institution for female student-athletes by *Sports Illustrated for Women*.

SYNOPSIS OF UNDERGRADUATE DEGREE PROGRAMS AND MAJORS
 (Full list available at: <https://academics.tcnj.edu/undergraduate-study>)

College-Wide Programs		
School of the Arts & Communication	Art Education	BA
	Art History and Visual Culture	BA
	Communication Studies (specializations in Interpersonal & Strategic Communication, Mass media and Social media, Digital filmmaking and Television, Health and Wellness Communication)	BA
	Visual Arts (options available in Fine Arts, Graphic Design and Lens-Based Art)	BFA
	Interactive Multimedia	BA
	Journalism & Professional Writing	BA
	Music (options available in Performance and Teacher Preparation)	BA, BM
School of Business	Accounting	BS
	Business Administration (specializations in Finance, Interdisciplinary Business, Management, Marketing)	BS
	Economics (options available in Secondary Education and 7 Year Medical)	BA, BS
School of Education	Early Childhood Education (Special Education Urban Education & Deaf and Hard of Hearing options)**	BS
	Education of the Deaf and Hard of Hearing/Elementary Education**	BS
	Elementary Education**	BS
	Secondary Education, Special Secondary Ed, Urban Secondary Ed**	BS
	Special Education/Elementary Education**	BS
	Speech-Language Pathology & Audiology***	BS
	Urban Education **	BS
options available with non-certification at the baccalaureate level; 5-year dual certification at the master's level, * combined 6-year BS/MS-SLP with Thomas Jefferson University		
School of Engineering	Biomedical Engineering (7 Year Medical option)	BSBME
	Civil Engineering	BSCE
	Computer Engineering	BSCoE
	Electrical Engineering	BSEE
	Engineering Science (specializations in Engineering Management; Robotics option)	BSES
	Mechanical Engineering	BSME
	Integrative STEM Education/Technology & Engineering Education	BS

School of Humanities & Social Sciences	African American Studies	BA
	Anthropology*	BA
	Criminology*	BA
	English***	BA
	History***	BA
	Environmental Studies	BA
	International Studies	BA
	Philosophy **	BA
	Political Science	BA
	Psychology*	BA
	Sociology*	BA
	Spanish	BA
	World Languages & Linguistics	BA
	Women's, Gender and Sexuality Studies*	BA
<i>*Options available for 3-year bachelor's degree, ** option in 7 Year Medical Programs *** options in Secondary Education, Urban Ed or Special/Secondary Ed and 7 Year Medical Programs</i>		
School of Nursing and Health Sciences	Kinesiology and Health Sciences (options available in Teacher Preparation and 4+3 DPT)	BS
	Nursing (Accelerated BSN and RN to BSN options available)	BSN
	Public Health (option for 5 Year MPH program)	BS
School of Science	Biology*	BS/BA
	Chemistry*	BS
	Computer Science	BS
	Mathematics*	BS
	Physics*	BS
<i>*options available in Secondary Education and 7 Year Medical Programs (MD, PharmD, DPT, OD)</i>		

Key	
BA	Bachelor of Arts
BFA	Bachelor of Fine Arts
BM	Bachelor of Music
BS	Bachelor of Science
BSBME	Bachelor of Science in Biomedical Engineering
BSCE	Bachelor of Science in Civil Engineering
BSCoE	Bachelor of Science in Computer Engineering
BSEE	Bachelor of Science in Electrical Engineering
BSE	Bachelor of Science in Engineering
BSME	Bachelor of Science in Mechanical Engineering
BSN	Bachelor of Science in Nursing

SYNOPSIS OF GRADUATE DEGREE PROGRAMS AND MAJORS
 (Full list available at: <https://graduate.tcnj.edu/explore-programs>)

Master's Level Programs		
Master of Arts	School Counseling	MA
	Clinical Mental Health Counseling	MA
	Educational Studies	MA
	English	MA
	Professional Studies	MA
Master of Arts in Teaching	Elementary Education (Leads to Certification)	MAT
	Early Childhood (Leads to Certification)	MAT
	MAT Early Childhood (available only to graduates of TCNJ's undergraduate portion of this program)	MAT
	MAT Elementary (available only to graduates of TCNJ's undergraduate portion of this program)	
	Education of the Deaf and Hard of Hearing (options in Elementary Ed – 5 YR program)	MAT
	Special Education (Leads to Certification) 5 YR program options in Early Childhood, Elementary and Secondary Education	MAT
	Urban Education (Leads to certification) 5 YR program options in Early Childhood, Elementary and Secondary Ed	MAT
Master of Business Administration	Data Analytics or Strategy, Innovation & Leadership tracks	MBA
Master of Education	Teaching English as a Second Language	MED
	Reading (Leads to Certification)	MED
	Literacy (with Reading Specialist Certification)	MED
	Educational Leadership: Instruction (through RTC)	MED
	Educational Leadership (Leads to Principal Certification)	MED
	Integrative STEM Education	MED
	Special Education (Must be Certified in Other Area)	MED
	Special Education- Teacher of Students with Blindness or Visual Impairment (Must be Certified)	MED
Master of Public Health	Public Health (Combined MBA/MPH option available)	MPH
Master of Public Policy	Public Policy	MPP

Master of Science in Nursing	Family Nurse Practitioner	MSN
	Family Nurse Practitioner (for Certified NPs)	MSN
	Adult-Gerontological Nurse Practitioner	MSN
	Neonatal Nurse Practitioner	MSN
	Clinical Nurse Leader	MSN
	Bridge to the Master of Science in Nursing for RNs (not available for school nursing)	MSN
	School Nurse	MSN
Master of Science	Accounting and Business Analytics	MS
	Management and Organizations	MS

20 MOST POPULAR UNDERGRADUATE MAJORS FALL 2023

Rank	Major
1	Psychology
2	Biology (BS)
3	Finance
4	Nursing
5	Marketing
6	Elementary Education
7	Accountancy
8	Mechanical Engineering
9	Kinesiology & Health Sciences
10	Management
11	Computer Science
12	Criminology
13	Communication Studies
14	Special Education
15	Political Science
16	Visual Arts
17	Civil Engineering
18	Interactive Multimedia
19	History (Secondary Ed)
20	Mathematics

Note: Ranks are based on primary major enrollment counts.

SOURCE: IRA Census Enrollment data

AVERAGE SAT SCORES BY ADMIT TYPE FOR FIRST-TIME FRESHMEN ENTERING FALL 2023

SAT Evidence Based Reading/Writing Scores	
Regular Admits	620
EOF Admits	575
All Admits	618
National Average	520
New Jersey Average	538
SAT Mathematics Scores	
Regular Admits	623
EOF Admits	538
All Admits	619
National Average	508
New Jersey Average	528

Source: Institutional Research & Analytics/College Board SAT Annual Report 2023

FIRST-TIME FRESHMEN ADMISSIONS ACTIVITY FALL 2023

	Total Applications	Offered Admission	Offer Rate	Offer Accepted	Yield
All Students					
Total	11668	7251	62.1%	1547	21.3%
NJ Residents					
Total	10108	6415	63.5%	1465	22.8%
Non Resident					
Total	1560	836	53.6%	82	9.8%

FIRST-TIME FRESHMEN FALL SEMESTER ADMISSIONS TRENDS

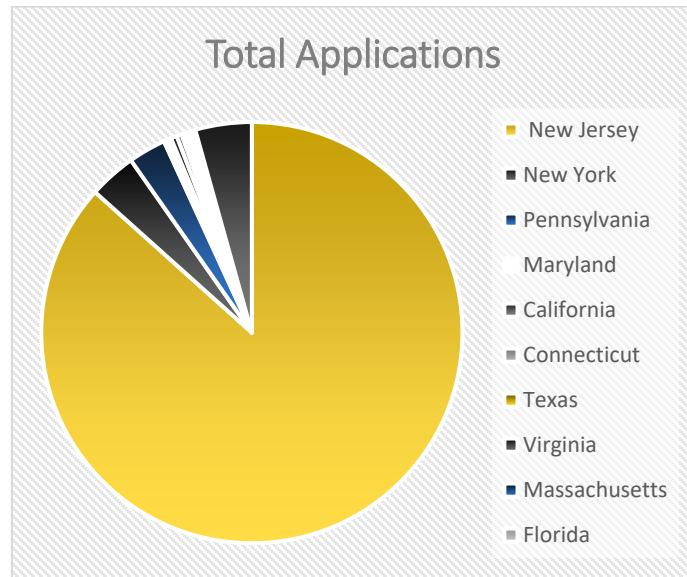
Fall 2016 - 2023

	2016	2017	2018	2019	2020	2021	2022	2023
Number of Applications Received	11,825	12,898	13,625	13,824	13,199	10,393	10,302	11,668
Number of Acceptances	5,778	6,130	6,785	6,811	6,743	6,442	6,637	7,251
Number of Students Matriculated	1,457	1,542	1,551	1,605	1,429	1,476	1,583	1,547
Accept Ratio:	49%	48%	49%	49%	51%	62%	64%	62%
Enrollment Yield:	25%	25%	23%	23%	21%	23%	24%	21%

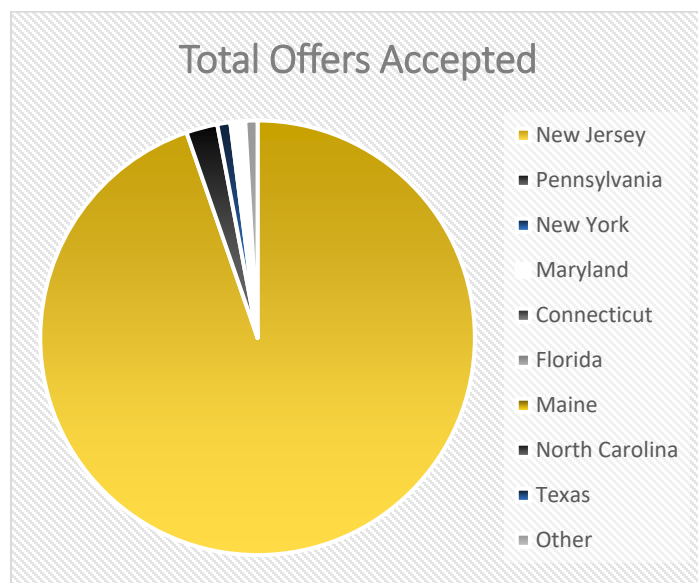
Source: Institutional Research & Analytics, Admissions fall semester Census date

DISTRIBUTION OF COMPLETED ADMISSIONS APPLICATIONS AND ACCEPTED OFFERS FIRST-TIME FRESHMEN FROM SELECT STATES FALL 2023

State	Total Applications	% of Total
New Jersey	10108	86.6%
New York	424	3.6%
Pennsylvania	336	2.9%
Maryland	68	0.6%
California	54	0.5%
Connecticut	46	0.4%
Texas	35	0.3%
Virginia	32	0.3%
Massachusetts	31	0.3%
Florida	29	0.2%
Other	505	4.3%
Total All Applications	11668	100%



State	Offers Accepted	% of Total
New Jersey	1465	94.7%
Pennsylvania	36	2.3%
New York	15	1.0%
Maryland	6	0.4%
Connecticut	3	0.2%
Florida	2	0.1%
Maine	2	0.1%
North Carolina	2	0.1%
Texas	2	0.1%
Other	14	1.0%
Total All Offers Accepted	1547	100%



ENROLLMENT BY SCHOOL AND ATTENDANCE STATUS FALL SEMESTERS 2019-2023

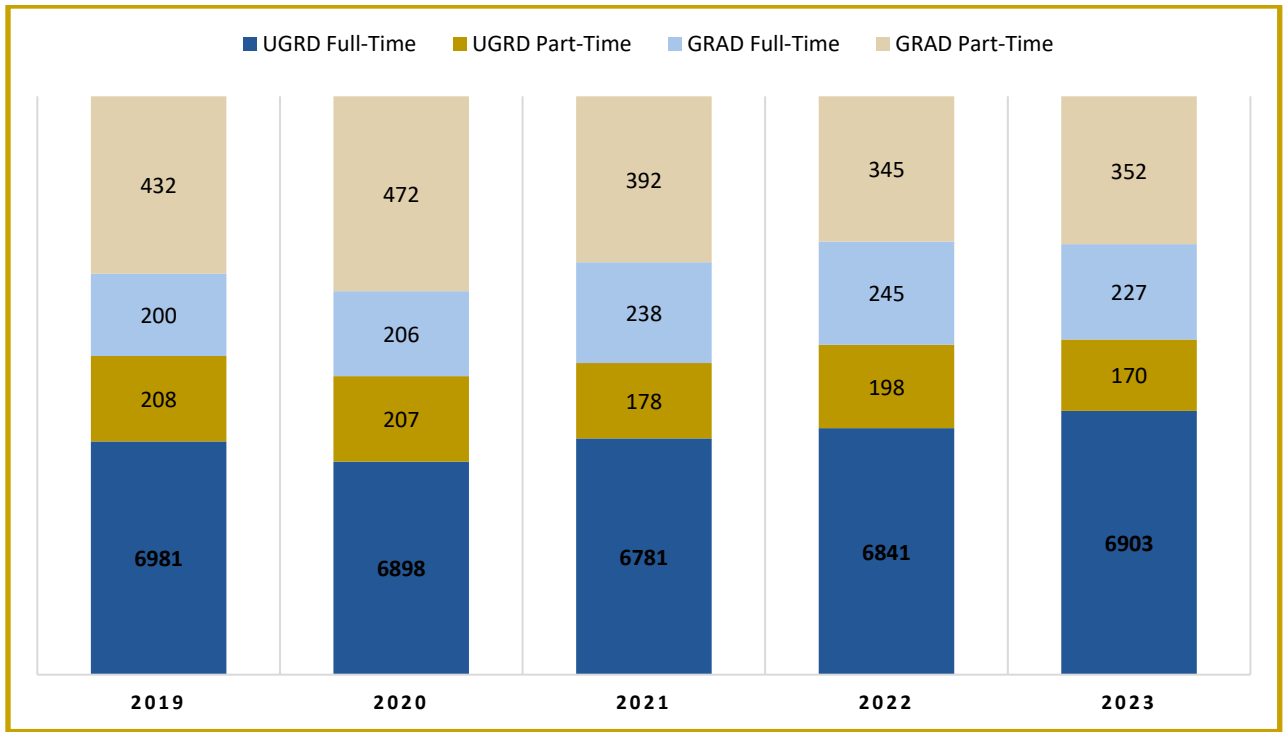
	2019	2020	2021	2022	2023
College Total	7821	7783	7589	7629	7652
<i>Full-Time</i>	7181	7104	7019	7086	7073
<i>Part-Time</i>	640	679	570	543	579
Undergraduate Total College	7189	7105	6959	7039	7073
<i>Full-Time</i>	6981	6898	6781	6841	6903
<i>Part-Time</i>	208	207	178	198	170
Graduate Total College	632	678	630	590	579
<i>Full-Time</i>	200	206	238	245	227
<i>Part-Time</i>	432	472	392	345	352
School of Arts & Communications	782	765	703	711	690
<i>Undergraduate</i>	782	765	703	711	689
<i>Full-Time</i>	765	744	682	686	669
<i>Part-Time</i>	17	21	21	25	20
<i>Graduate</i>	0	0	0	0	1
<i>Part-Time</i>	0	0	0	0	1
School of Business	1253	1294	1297	1330	1399
<i>Undergraduate</i>	1220	1241	1260	1307	1355
<i>Full-Time</i>	1190	1210	1235	1268	1328
<i>Part-Time</i>	30	31	25	39	27
<i>Graduate</i>	33	53	37	23	44
<i>Full-Time</i>	32	0	2	2	6
<i>Part-Time</i>	1	53	35	21	38
School of Humanities & Social Sciences	1538	1525	1499	1473	1461
<i>Undergraduate</i>	1514	1500	1471	1447	1432
<i>Full-Time</i>	1476	1464	1426	1414	1401
<i>Part-Time</i>	38	36	45	33	31
<i>Graduate</i>	24	25	28	26	29
<i>Full-Time</i>	8	12	14	12	16
<i>Part-Time</i>	16	13	14	14	13

Fall Enrollment Continued	2019	2020	2021	2022	2023
School of Education	1199	1263	1237	1213	1154
Undergraduate	847	856	813	772	743
Full-Time	841	846	808	766	730
Part-Time	6	10	5	6	13
Graduate	352	407	424	441	411
Full-Time	164	168	205	208	185
Part-Time	188	239	219	233	226
School of Engineering	736	770	709	654	669
Undergraduate	718	743	690	641	658
Full-Time	705	726	679	629	644
Part-Time	13	17	11	12	14
Graduate	18	27	19	13	11
Full-Time		2	1	0	0
Part-Time	18	25	18	13	11
School of Nursing, Health & Exercise Science	781	749	706	705	734
Undergraduate	719	684	647	661	683
Full-Time	664	643	624	639	666
Part-Time	55	41	23	22	17
Graduate	62	65	59	44	51
Full-Time	27	24	16	22	20
Part-Time	35	41	43	22	31
School of Science	1198	1192	1163	1134	1088
Undergraduate	1198	1192	1163	1134	1088
Full-Time	1176	1161	1142	1102	1053
Part-Time	22	31	21	32	35
Non-Matriculated/ Visiting/Undeclared /Independent Studies	334	225	275	409	457
Undergraduate	191	124	212	366	425
Full-Time	164	104	185	337	412
Part-Time	27	20	27	29	13
Graduate	143	101	63	43	32
Full-Time	1	0	2	1	0
Part-Time	142	101	61	42	32

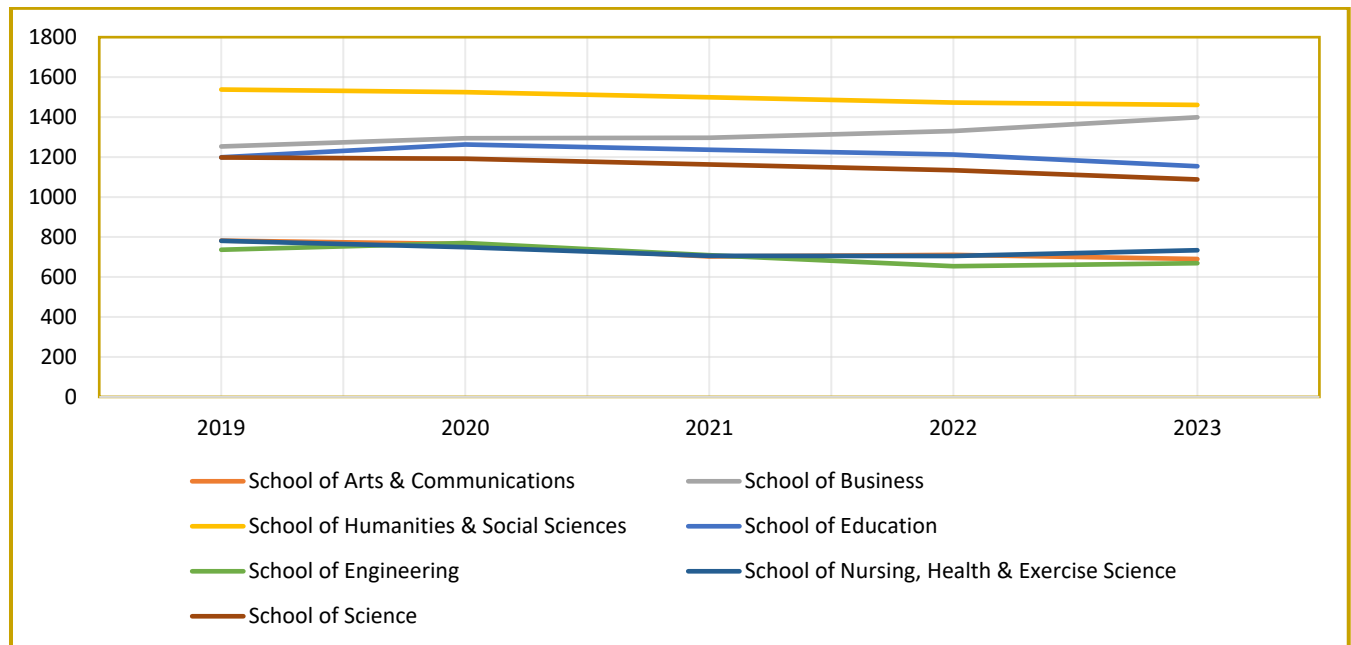
Official Fall Term Census Date headcounts

Note: Enrollment counts include primary majors only.

TRENDS IN TOTAL ENROLLMENT FALL 2019 - 2023



TRENDS IN TOTAL ENROLLMENT BY SCHOOL Fall 2019 – 2023



ETHNICITY OF STUDENTS FALL 2019-2023

Undergraduate Race/Ethnicity	2019	2020	2021	2022	2023
African-American/Black	408	394	379	385	401
Asian	838	824	794	760	748
Hispanic	1025	1069	1165	1238	1260
Native American	8	7	6	5	3
Native Hawaiian	8	8	6	3	3
Non-Resident Alien	43	51	57	52	50
Not Reported	317	216	201	221	224
Two or More Races	91	130	152	197	214
White	4451	4406	4199	4178	4170
Total	7189	7105	6959	7039	7073

Graduate Race/Ethnicity	2019	2020	2021	2022	2023
African-American/Black	32	40	37	36	42
Asian	42	42	41	37	37
Hispanic	53	57	55	71	78
Native American	4	3	0	2	2
Native Hawaiian	2	1	1	2	2
Non-Resident Alien	0	0	2	1	1
Not Reported	122	138	119	93	85
Two or More Races	1	2	3	6	10
White	376	395	372	342	322
Total	632	678	630	590	579

Official Fall Term Census Date enrollment counts

ETHNICITY OF STUDENTS BY SCHOOL FALL 2023

Undergraduate Race/Ethnicity

Undergraduate	African American	Asian	Hispanic	Native American	Native Hawaiian	Non Resident Alien	Not Reported	Two or more races	White	Total
<i>School of Arts & Communications</i>	45	46	150	1	1	0	13	25	408	689
<i>School of Business</i>	56	134	225	0	1	11	41	37	850	1355
<i>School of Humanities & Social Sciences</i>	94	107	286	0	0	9	28	45	863	1432
<i>School of Education</i>	19	37	128	0	0	1	12	10	536	743
<i>School of Engineering</i>	35	61	105	0	1	9	24	20	403	658
<i>School of Nursing Health & Exercise Science</i>	70	91	125	0	0	3	30	29	335	683
<i>School of Science</i>	63	226	177	1	0	14	40	36	531	1088
<i>Non-Matriculated /Visiting & Other</i>	19	46	63	1	0	3	36	12	241	421
Total Undergraduate	401	748	1260	3	3	50	224	214	4170	7073

Graduate Race/Ethnicity

Graduate	African American	Asian	Hispanic	Native American	Native Hawaiian	Non-Resident Alien	Not Reported	Two or more races	White	Total
<i>School of Arts & Communications</i>	0	0	0	0	0	0	0	0	1	1
<i>School of Business</i>	3	4	5	0	0	0	6	0	26	44
<i>School of Humanities & Social Sciences</i>	2	6	3	0	0	0	3	0	15	29
<i>School of Education</i>	29	21	60	1	2	1	50	7	240	411
<i>School of Engineering</i>	0	2	1	0	0	0	0	0	8	11
<i>School of Nursing Health & Exercise Science</i>	7	3	6	1	0	0	9	2	23	51
<i>Non-Matriculated & Visiting</i>	1	1	3	0	0	0	17	1	9	32
Total Graduate	42	37	78	2	2	1	85	10	322	579

Official Fall Term Census Date enrollment counts/1st majors only

ENROLLMENT BY GENDER – FALL 2019 - 2023 TOTAL COLLEGE

Undergraduate	2019	2020	2021	2022	2023
<i>Female</i>	4044	4045	3949	3992	3984
<i>Male</i>	3024	3042	3010	3047	3089
<i>Not Reported</i>	12	18	0	0	0
Total	7189	7105	6959	7039	7073
Graduate	2019	2020	2021	2022	2023
<i>Female</i>	446	478	480	462	454
<i>Male</i>	102	133	120	128	125
<i>Not Reported</i>	84	67	30	0	0
Total	632	678	630	590	579

ENROLLMENT BY GENDER – FALL 2019-2023
GRADUATE LEVEL – By SCHOOL

	2019	2020	2021	2022	2023
School of Arts & Communications					
<i>Graduate Students Enrolled</i>	0	0	0	0	1
<i>Male</i>	0	0	0	0	1
School of Business					
<i>Graduate Students Enrolled</i>	33	53	37	23	44
<i>Female</i>	17	28	15	9	18
<i>Male</i>	11	25	22	14	26
<i>Not Reported</i>	0	0	0	0	0
School of Humanities & Social Sciences					
<i>Graduate Students Enrolled</i>	24	25	28	26	29
<i>Female</i>	17	12	20	18	20
<i>Male</i>	7	13	7	8	9
<i>Not Reported</i>	0	0	1	0	0
School of Education					
<i>Graduate Students Enrolled</i>	352	407	424	441	411
<i>Female</i>	264	317	344	352	340
<i>Male</i>	52	71	73	89	71
<i>Not Reported</i>	36	19	7	0	0
School of Engineering					
<i>Graduate Students Enrolled</i>	18	27	19	13	11
<i>Female</i>	13	20	16	10	6
<i>Male</i>	5	7	3	3	5
<i>Not Reported</i>	0	0	0	0	0
School of Nursing, Health & Exercise Science					
<i>Graduate Students Enrolled</i>	62	65	59	44	51
<i>Female</i>	56	58	50	36	43
<i>Male</i>	5	6	7	8	8
<i>Not Reported</i>	1	1	2	0	0

Official Fall Term Census Date enrollment counts

ENROLLMENT BY GENDER – FALL 2019 - 2023
UNDERGRADUATE LEVEL – BY SCHOOL

	2019	2020	2021	2022	2023
School of Arts & Communications	782	765	703	711	689
<i>Female</i>	492	467	425	428	411
<i>Male</i>	290	298	278	283	278
School of Business	1220	1241	1260	1307	1355
<i>Female</i>	463	455	450	446	480
<i>Male</i>	757	786	810	861	875
School of Education	847	856	813	772	743
<i>Female</i>	776	788	749	719	694
<i>Male</i>	71	68	64	53	49
School of Engineering	718	743	690	641	658
<i>Female</i>	179	197	177	164	168
<i>Male</i>	539	546	513	477	490
School of Humanities & Social Sciences	1514	1500	1471	1447	1432
<i>Female</i>	957	951	936	955	961
<i>Male</i>	557	549	535	492	471
School of Nursing Health & Exercise Science	719	684	647	661	683
<i>Female</i>	537	515	488	502	505
<i>Male</i>	182	169	159	159	178
School of Science	1198	1192	1163	1134	1088
<i>Female</i>	626	624	626	627	578
<i>Male</i>	572	568	537	507	510
Other Undergraduate: <i>Non-Matriculated, Undeclared, Visiting, Independent Studies</i>	191	124	212	366	425
<i>Female</i>	87	61	98	151	187
<i>Male</i>	104	63	114	215	238

Official Fall term Census Date Enrollment Counts

ENROLLMENT BY RESIDENCE (In-State/Out-of-State)
FALL 2019 - 2023

Undergraduate	2019	2020	2021	2022	2023
<i>NJ Resident</i>	6764	6703	6582	6662	6739
<i>Non-Resident</i>	425	402	377	377	334
Total	7189	7105	6959	7039	7073
Graduate	2019	2020	2021	2022	2023
<i>NJ Resident</i>	552	527	522	501	519
<i>Non-Resident</i>	80	151	108	89	60
Total	632	678	630	590	579
Residence By School	2019	2020	2021	2022	2023
Undergraduate School of Arts & Communications	782	765	703	711	689
<i>NJ Resident</i>	751	729	679	677	659
<i>Non-Resident</i>	31	36	26	34	30
Undergraduate School of Business	1220	1241	1260	1307	1355
<i>NJ Resident</i>	1148	1179	1211	1256	1300
<i>Non-Resident</i>	72	62	49	51	55
Undergraduate School of Education	847	856	813	772	743
<i>NJ Resident</i>	804	806	768	734	705
<i>Non-Resident</i>	43	50	45	38	38
Undergraduate School of Engineering	718	743	690	641	658
<i>NJ Resident</i>	645	672	625	594	612
<i>Non-Resident</i>	73	71	65	47	46
Undergraduate School of Humanities & Social Sciences	1514	1500	1471	1447	1432
<i>NJ Resident</i>	1456	1445	1414	1380	1371
<i>Non-Resident</i>	58	55	57	67	61
Undergraduate School of Nursing Health & Exercise Science	719	684	647	661	683
<i>NJ Resident</i>	654	616	588	612	641
<i>Non-Resident</i>	65	68	59	49	42
Undergraduate School of Science	1198	1192	1163	1134	1088
<i>NJ Resident</i>	1133	1137	1106	1073	1050
<i>Non-Resident</i>	65	55	57	61	38
Other Undergraduate: <i>Non-Matriculated, Undecided, Visiting</i>	191	124	212	366	425
<i>NJ Resident</i>	173	119	193	336	401
<i>Non-Resident</i>	18	5	19	30	24

Official Fall term Census Date Enrollment Counts

ENROLLMENT BY MAJOR Academic Year 2018 - 2023

Please use the following links to access tables that contain enrollment data for majors over the past five fall and spring terms. The enrollment tables include enrollment by plan (1st Major) with breakouts for FT/PT, Race/Ethnicity, Gender, Academic Level, Second Major, and Sub-plan and are derived from the fall and spring semester census dates.

[TCNJ FB Enrollment AY2019 2023.xlsx](#)

GRADUATION/TRANSFER OUT RATES New First-Time, Full-Time Freshmen & Transfer Cohorts Fall Terms 2008 – 2017

IPEDS Reporting Year	Cohort Year	FSH Cohort #	Transfer Out Rate	FSH Graduation Rate (% completing within 6 years)	Transfer Cohort #	Transfer Cohort Graduation Rate
2023-24	2017	1540	10%	85%	239	86%
2022-23	2016	1454	9%	86%	266	87%
2021-22	2015	1451	9%	87%	251	83%
2020-21	2014	1418	9%	86%	267	87%
2019-20	2013	1404	12%	86%	255	87%
2018-19	2012	1363	10%	86%	258	81%
2017-18	2011	1371	11%	87%	262	80%
2016-17	2010	1421	11%	87%	341	83%
2015-16	2009	1283	10%	85%	324	86%
2014-15	2008	1295	10%	87%	262	81%

IPEDS Graduate Rate Surveys & Retention/Graduation data (reporting years 2014-2024), graduation within 150% time

**FIRST YEAR TO SECOND YEAR
RETENTION RATES FOR
ENTERING FIRST-TIME, FULL-TIME FRESHMEN
BY ETHNICITY
FALL 2017 – FALL 2022**

	Fall 2017	Fall 2018	Fall 2019	Fall 2020	Fall 2021	Fall 2022	5 YR AVG % Retained from cohort to 2nd Fall Term
Total # Freshmen in Cohort	1541	1551	1605	1427	1476	1572	--
African American	93.68%	89.74%	89.16%	86.76%	85.42%	85.19%	88.33%
Asian	97.87%	94.86%	95.77%	91.91%	94.05%	88.39%	93.81%
Hispanic	90.83%	87.95%	93.75%	92.95%	88.07%	86.44%	90.00%
Native American	100%	50.00%	100.00%	0.00%	0.00%	0.00%	83.00%
Native Hawaiian	100%	100%	NA	100.00%	NA	100.00%	100.00%
Not Reported	93.75%	92.73%	90.91%	80.95%	92.86%	92.98%	90.70%
Two or More Races	-	75.00%	90.57%	91.30%	84.21%	88.24%	85.86%
White	92.57%	93.98%	94.01%	92.49%	91.47%	92.34%	92.81%
% Retained from Total Cohort to 2nd Fall Term	93.12%	92.52%	93.77%	91.94%	90.24%	90.08%	91.95%

**1st YEAR to 2nd YEAR FRESHMEN RETAINED in 1st YR SCHOOL
FALL 2018 – FALL 2022**

School	2017	2018	2019	2020	2021
Arts & Communication	84.90%	82.30%	87.00%	81.80%	90.30%
Business	91.40%	89.40%	93.10%	82.60%	86.00%
Education	87.20%	89.90%	87.60%	87.70%	85.40%
Engineering	86.20%	85.60%	88.30%	89.30%	69.10%
Humanities and Social Sciences	82.40%	83.10%	84.80%	80.90%	85.20%
Nursing, Health & Exercise Science	86.30%	86.70%	88.40%	91.40%	78.90%
Science	83.40%	86.70%	85.00%	87.80%	84.60%
AVG % All TCNJ Schools	86.00%	86.20%	87.70%	85.90%	85.90%

% Includes New Entering Freshmen Cohort Retained in First Year School only

Source: Official Fall term Census Date Enrollment/freshmen cohorts

**4 YEAR, 5 YEAR & 6 YEAR
GRADUATION RATES FOR
ENTERING FIRST-TIME FRESHMEN
BY ETHNICITY & GENDER
FALL 2013 – FALL 2017 COHORTS**

Entering Cohort Year	2013	2014	2015	2016	2017
Total Number in Cohort	1404	1418	1453	1457	1540
<i>% Graduating within 4 Years</i>	75%	75%	76%	75%	75%
<i>% Female</i>	80	81	80	81	81
<i>% Male</i>	67	66	70	67	68
<i>% African-American</i>	55	58	62	59	73
<i>% Asian</i>	73	73	75	71	73
<i>% Hispanic</i>	62	71	68	69	71
<i>% Native American</i>	100	80	75	NA	NA
<i>% Native Hawaiian/Pacific Islander</i>	100	50	80	NA	50
<i>% US Non-Resident</i>	67	0	50	50	71
<i>% White</i>	79	77	80	79	77
<i>% Two or More Races</i>	38	83	43	100	71
<i>% Not Reported</i>	77	88	69	92	80
<i>% Graduating within 5 Years</i>	84%	85%	85%	84%	84%
<i>% Female</i>	88	89	87	88	88
<i>% Male</i>	78	79	81	79	78
<i>% African-American</i>	76	71	72	75	84
<i>% Asian</i>	82	83	88	80	83
<i>% Hispanic</i>	76	85	80	79	79
<i>% Native American</i>	100	80	75	NA	NA
<i>% Native Hawaiian/Pacific Islander</i>	100	100	100	NA	75
<i>% US Non-Resident</i>	67	50	67	75	100
<i>% White</i>	87	86	87	87	85
<i>% Two or More Races</i>	50	83	43	100	71
<i>% Not Reported</i>	87	92	73	92	83
<i>% Graduating within 6 Years</i>	86%	86%	87%	86%	85%
<i>% Female</i>	89	90	89	89	89
<i>% Male</i>	81	81	84	82	80
<i>% African-American</i>	76	76	74	78	87
<i>% Asian</i>	83	85	92	83	84
<i>% Hispanic</i>	79	87	83	80	82
<i>% Native American</i>	100	80	75	NA	NA
<i>% Native Hawaiian/Pacific Islander</i>	100	100	100	NA	75
<i>% US Non-Resident</i>	67	50	67	100	100
<i>% White</i>	88	88	89	88	86
<i>% Two or More Races</i>	50	83	57	100	71
<i>% Not Reported</i>	88	96	73	92	84

Source: IPEDS Graduate Rate Survey, first-time freshmen cohorts

**DEGREES GRANTED BY SCHOOL AND DEGREE TYPE
FY2020-2024**

School	Degree	2019-20	2020-21	2021-22	2022-23	2023-24
Arts & Comm UGRD	BA	156	167	144	142	123
Arts & Comm UGRD	BFA	39	26	24	40	41
Arts & Comm UGRD	BM	12	13	19	16	11
Business GRAD	CER	-	-	-	-	4
Business GRAD	MBA	-	-	28	22	13
Business UGRD	BA	2	3	4	7	12
Business UGRD	BS	361	340	336	336	318
Humanities & Soc. Sci GRAD	MA	16	12	21	18	16
Humanities & Soc. Sci GRAD	MPP	-	-	-	-	2
Humanities & Soc. Sci UGRD	BA	338	370	377	386	366
Education GRAD	CER	18	7	4	0	3
Education GRAD	MA	36	49	47	71	61
Education GRAD	MAT	90	109	103	104	94
Education GRAD	MED	159	181	143	108	104
Education GRAD	SCT	67	105	107	83	61
Education UGRD	BS	176	199	213	193	194
Engineering GRAD	MED	8	7	17	6	7
Engineering UGRD	BS	6	8	12	7	5
Engineering UGRD	BSBM	18	37	37	37	22
Engineering UGRD	BSCE	23	33	31	29	26
Engineering UGRD	BSCO	17	14	18	12	13
Engineering UGRD	BSEE	19	18	21	18	8
Engineering UGRD	BSES	10	11	2	3	6
Engineering UGRD	BSME	33	41	51	40	35
Independent Studies UGRD	BA	8	4	2	2	2
Nursing & Health Sciences GRAD	CER	0	0	3	2	1
Nursing & Health Sciences GRAD	MPH	2	9	19	7	21
Nursing & Health Sciences GRAD	MSN	16	11	12	12	5
Nursing & Health Sciences GRAD	SCT	2	0	0	2	0
Nursing & Health Sciences UGRD	BS	98	112	98	88	103
Nursing & Health Sciences UGRD	BSN	92	73	69	67	66
Science UGRD	BA	3	12	20	18	25
Science UGRD	BS	237	238	245	278	213

Source: IRA Completion Statistics (defined by Federal IPEDS Completions standards – July 1 through June 30)

FRESHMEN COHORT GRADUATION RATE BY SCHOOL FALL 2017 Freshman Cohort

2017 First Time Freshmen – 4, 5, 6 Year Graduation Rates					
School	FSH Cohort Original #	Graduating TCNJ within 4 Years %	Graduating TCNJ within 5 Years %	Graduating TCNJ within 6 Years %	Graduating from School within 6 Years %
Arts & Communications	152	80.3%	85.5%	86.2%	71.1%
Business	222	77.5%	85.6%	86.9%	82.0%
Humanities & Social Sciences	241	73.3%	81.5%	83.3%	62.9%
Education	145	84.3%	87.2%	87.8%	75.0%
Engineering	133	70.7%	82.4%	85.1%	72.9%
Nursing, Health & Exercise Science	104	71.7%	84.1%	85.5%	70.3%
Science	244	73.5%	82.2%	83.4%	58.1%
Total Cohort	1540	75.4%	83.6%	85.1%	68.7%

Graduating from School within 6 years % - includes only students that graduated from same School as enrolled in Freshman first term.

DEGREES GRANTED BY SCHOOL AND PROGRAM 2019 – 2024

Use the link below to access tables containing the number of degrees and certificates awarded by School, plan, race/ethnicity and gender from academic years 2019-20 up to 2023-24.

[TCNJ FB Degrees Awards FY2019 2024.xlsx](#)

EMPLOYEES BY IPEDS OCCUPATIONAL CATEGORY 2023 - 2024

Number of Staff by Employment Status and Occupational Category			
Academic Year 2023 - 2024			
Occupational Category	Reported Values		FTE Staff
	# of Full-time Staff	# of Part-time Staff	
Total Number of Staff	1106	431	1250
<i>Instructional Staff</i>	365	402	499
<i>Librarians, Curators, Archivists</i>	27	5	29
<i>Student & Academic Affairs and other Education Services</i>	99	11	103
<i>Management Occupations</i>	109	0	109
<i>Business & Financial Operations</i>	69	0	69
<i>Computer, Engineering & Science Occupations</i>	42	1	42
<i>Community, Social Service, Legal, Arts, Design, Entertainment, Sports and Media Occupations</i>	102	0	102
<i>Healthcare Practitioners & Technical Occupations</i>	17	10	20
<i>Service Occupations</i>	50	0	50
<i>Office and Administrative Support</i>	97	2	98
<i>Natural Resources, Construction, and Maintenance Occupations</i>	129	0	129

Source: IPEDS Human Resources Survey 2023-24

**EMPLOYEES BY GENDER
FALL 2019 - 2023**

	2019	2020	2021	2022	2023
<u>Instructional Staff (Full-time)</u>	373	375	372	365	365
Male	174	174	171	165	157
Female	199	201	201	200	208
<u>Instructional Staff (Part-time)</u>	471	471	444	407	402
Male	212	186	189	161	152
Female	259	285	255	246	250
<u>Staff (Full-time)</u>	810	770	738	746	741
Male	361	337	325	341	316
Female	449	433	413	405	425
<u>Staff (Part-time)</u>	56	40	47	40	29
Male	16	9	14	14	9
Female	40	31	33	26	20
Total Staff	1710	1656	1601	1558	1537
Male	763	706	699	681	634
Female	947	950	902	877	903

Source: IPEDS Human Resources Survey

**EMPLOYEES BY IPEDS RACE/ETHNICITY
FALL 2023 - 2024**

2023-24 Staff					
<u>Race/Ethnicity</u>	Instructional Staff (Full-time)	Staff (Full-time)	Instructional Staff (Part-time)	Staff (Part-time)	Total Staff
African American	26	108	19	1	154
Asian	64	33	9	0	106
Hispanic	21	65	9	2	97
Native American	1	0	1	0	2
Native Hawaiian/Pacific Islander	0	2	0	0	2
Not Reported	34	110	181	13	338
Two or More Races	0	2	3	0	5
White	219	421	180	13	833
Total	365	741	402	29	1537

Source: IPEDS Human Resources Survey

NUMBER OF FACULTY BY RANK AND TENURE STATUS FALL 2019 - FALL 2023

	2019			2020			2021			2022			2023		
	Ten/ Ten Trk	Non Ten	Total	Ten/ Ten Trk	Non Ten	Total	Ten/ Ten Trk	Non Ten	Total	Ten/ Ten Trk	Non Ten	Total	Ten/ Ten Trk	Non Ten	Total
Full-Time:															
<i>Professor</i>	139	0	139	145	0	145	149	0	149	156	0	156	159	0	159
<i>Associate Professor</i>	127	1	128	135	1	136	130	1	131	123	0	123	124	1	125
<i>Assistant Professor</i>	84	21	105	72	19	91	60	20	80	49	18	67	37	16	53
<i>Instructor*</i>	0	1	1	0	3	3	0	12	12	0	19	19	0	24	24
Total Full-Time Faculty	350	23	373	352	23	375	339	33	372	328	37	365	320	40	360
Total Part-Time Faculty**	0	18	18	0	15	15	0	11	11	0	12	12	0	12	12
Grand Total	350	41	391	352	38	390	339	44	383	328	49	377	320	52	373

- **Instructor includes: Instructor, Clinical Specialist, Lecturer and Senior Lecturer*
- ***Part-Time Faculty includes regular part-time faculty. Adjuncts are not included.*

Source: IRA/HR Data

TENURE STATUS AMONG FULL-TIME TENURE TRACK FACULTY FALL 2019 - FALL 2023

	2019		2020		2021		2022		2023	
	Tenured/ Eligible	% Tenured	Tenured/ Eligible	% Tenured	Tenured/ Eligible	% Tenured	Tenured/ Eligible	% Tenured	Tenured/ Eligible	% Tenured
<i>Professor</i>	138/139	99.3%	144/145	99.3%	148/149	99.3%	155/156	99.4%	159/159	100%
<i>Associate Professor</i>	112/127	88.2%	103/135	76.3%	104/130	80.0%	93/123	75.6%	96/124	77.4%
<i>Assistant Professor</i>	15/84	17.9%	11/72	15.3%	8/60	13.3%	7/49	14.3%	3/37	8.1%
Total	265/350	75.7%	258/352	73.3%	260/339	76.7%	255/328	77.7%	258/320	80.6%

*Key: % Tenured = # Tenured/# Eligible * 100.*

Note: Counts include active faculty.

Source: IRA/HR Faculty Data

AVERAGE SALARY OF FULL-TIME CONTINUING FACULTY BY RANK ACADEMIC YEARS 2019-20 THROUGH 2023-24

	2019-20		2020-21		2021-22		2022-23		2023-24	
	Average Salary \$	Average Increase from Previous Year %	Average Salary \$	Average Increase from Previous Year %	Average Salary \$	Average Increase from Previous Year %	Average Salary \$	Average Increase from Previous Year %	Average Salary \$	Average Increase from Previous Year %
<i>Professor</i>	\$125,417	1.8%	\$126,344	2.7%	\$130,332	2.5%	\$135,248	3.8%	\$135,467	0.9%
<i>Associate Professor</i>	\$103,725	2.2%	\$105,089	4.9%	\$109,033	3.9%	\$114,441	4.9%	\$114,350	2.3%
<i>Assistant Professor</i>	\$86,830	2.9%	\$86,110	5.6%	\$91,910	6.8%	\$96,357	4.8%	\$97,188	4.3%
<i>Instructor</i>	\$75,403	0.0%	\$60,945	0.0%	\$0	0.0%	\$87,671	0.0%	\$89,972	3.8%
<i>Sr. Lecturer /Lecturer/Clinical Specialist</i>	-	-	\$91,125	0.0%	\$94,067	3.2%	\$89,157	-5.2%	\$88,042	3.1%

Note: Includes all full-time faculty

Percentage of increase from previous year reflects the percentage of change in total salary expenditures for continuing faculty only, 9 month and 12 month converted salaries

Source: IRA/AAUP Annual Survey of Faculty Compensation

STATEMENT OF OPERATING ACTIVITIES FY 2019-2023

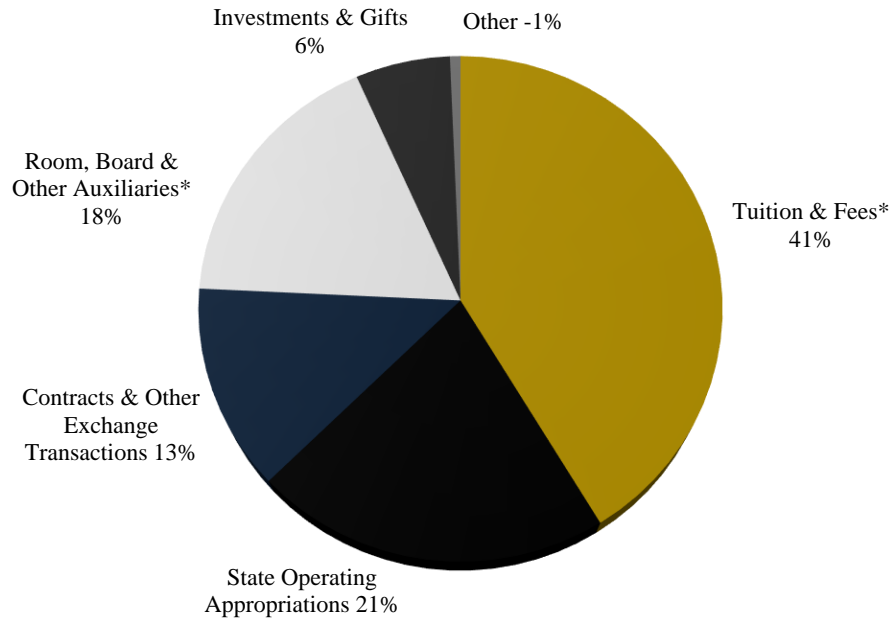
	FY19	FY20	FY21	FY22	FY23
Operating Revenue and Additions:					
Tuition & Fees, net of discounts and allowances	\$108,034,000	\$109,792,000	\$104,343,000	\$109,956,000	\$107,718,000
State operating appropriations	\$54,351,000	\$50,394,000	\$51,664,000	\$52,094,000	\$55,676,000
Contracts & other exchange transactions	\$24,847,000	\$28,804,000	\$37,958,000	\$44,013,891	\$34,041,350
Room, board & other auxiliaries, net of discounts and allowances	\$51,276,000	\$40,816,000	\$9,831,000	\$42,906,000	\$45,745,000
Investments & gifts	\$7,605,000	\$6,558,000	\$18,442,000	(\$10,190,000)	\$15,717,000
Other	\$22,086,000	\$6,197,000	\$6,826,000	\$5,397,109	(\$1,743,350)
Total operating revenues and support	\$268,199,000	\$242,561,000	\$229,064,000	\$244,177,000	\$257,154,000
Total Discounts and Allowances	\$29,022,000	\$31,594,000	\$31,100,000	\$33,922,000	\$41,827,000
Operating Expenses and Transfers:					
Instruction & Academic support	\$126,108,000	\$118,840,000	\$97,169,000	\$112,356,000	\$124,551,000
Sponsored activities	\$25,301,000	\$26,639,000	\$24,786,000	\$31,578,000	\$34,752,000
Student services	\$30,984,000	\$29,859,000	\$24,342,000	\$31,977,000	\$37,189,000
Student aid	\$1,226,000	\$3,990,000	\$3,287,000	\$7,843,000	\$2,927,000
Institutional Support	\$28,935,000	\$32,419,000	\$30,292,000	\$31,506,000	\$30,487,000
Room, board & other auxiliaries	\$42,562,000	\$35,662,000	\$16,436,000	\$34,819,000	\$35,453,000
Operation and maintenance of plant*	\$0	\$0	\$0	\$0	\$0
Transfers & other	\$15,757,000	\$4,264,000	\$47,110,000	\$10,106,000	(\$4,291,000)
Total operating expenses and transfers	\$270,873,000	\$251,673,000	\$243,422,000	\$260,185,000	\$261,068,000

Note: As of FY09-10, Operation and maintenance of plant expenses were reallocated within other areas and no longer a separate item under Expenses.

Source: IRA/IPEDS Finance Survey FY23, GASB

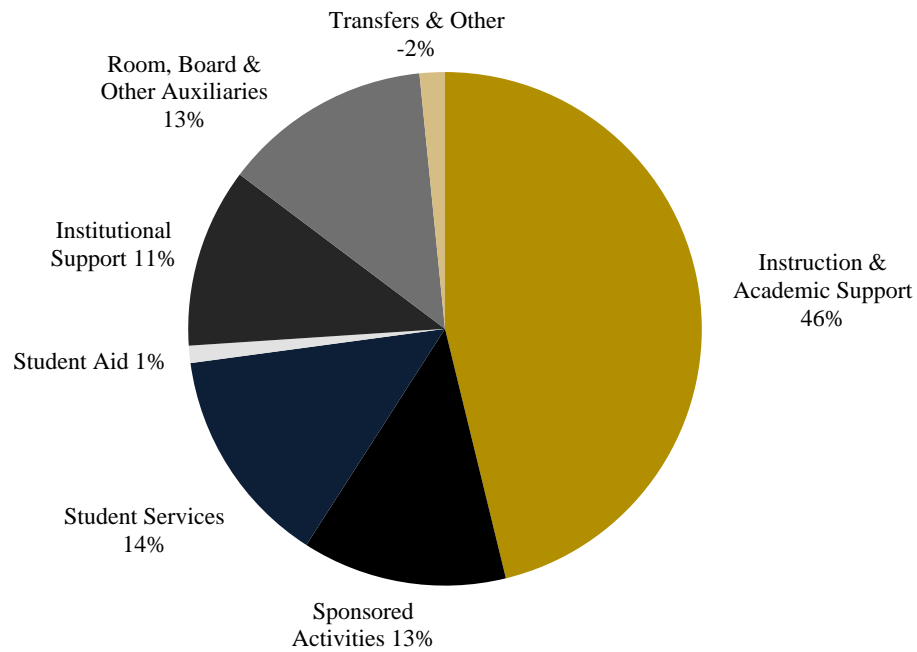
OPERATING REVENUE, EXPENSES AND TRANSFERS FISCAL YEAR 2023

REVENUE (\$257,154,000)



**Net of Scholarship & Fellowship Allowance*

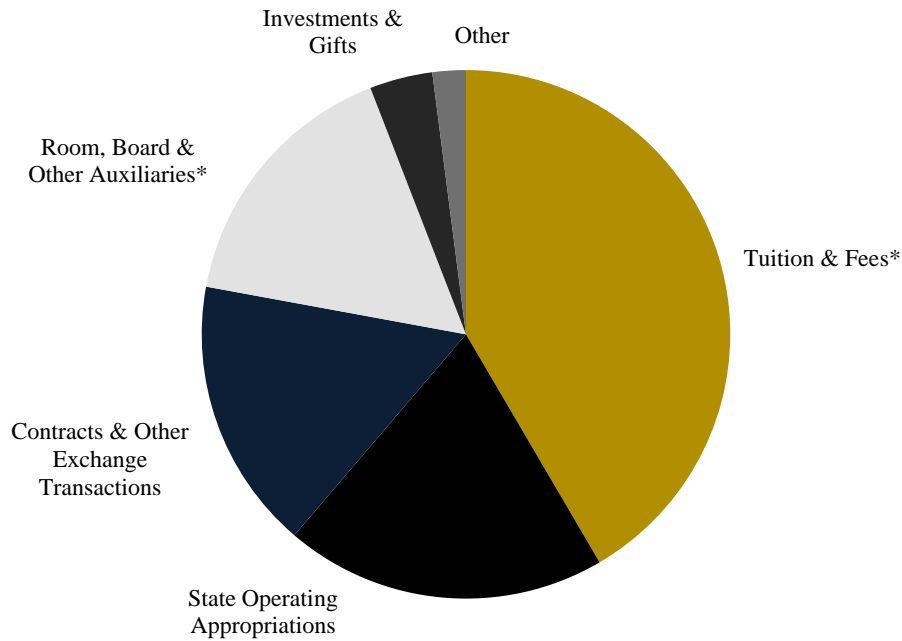
EXPENSES & TRANSFERS (\$261,068,000)



Source: IRA/IPEDS 2022-23 Finance Survey, FY23, GASB

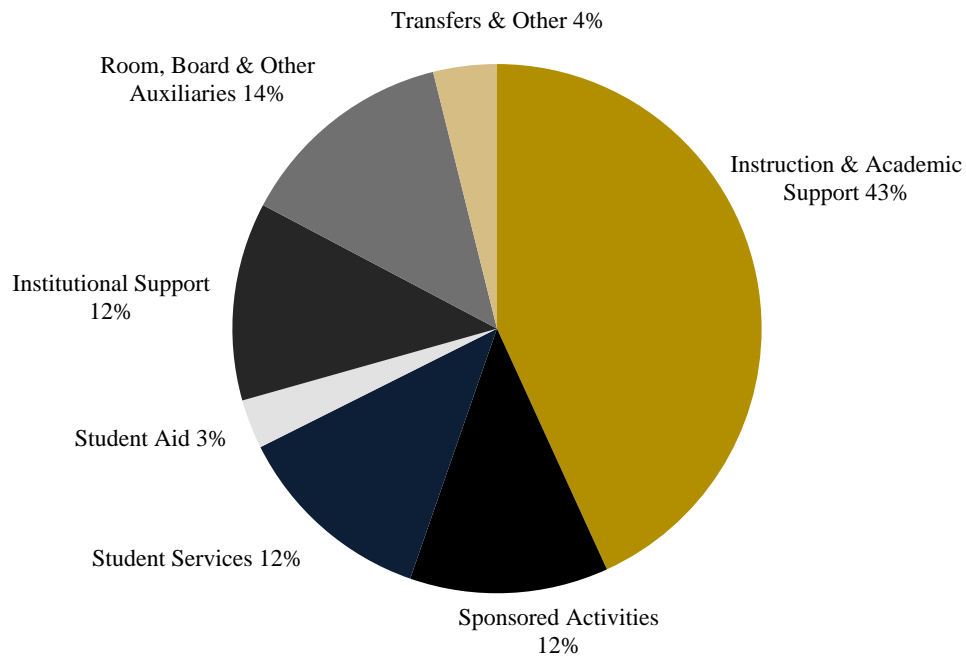
OPERATING REVENUE, EXPENSES AND TRANSFERS FISCAL YEAR 2022

REVENUE (\$244,177,000)



**Net of Scholarship & Fellowship Allowance*

EXPENSES & TRANSFERS (\$260,185,000)



Source: IRA/IPEDS 2021-22 Finance Survey, FY22, GASB

CHANGE IN NET ASSETS FY 2020 - FY 2023

	FY20	FY21	FY22	FY23
Assets:				
Current Assets	\$114,948,000	\$127,622,000	\$113,742,000	\$106,014,000
Capital Assets, net	\$666,335,000	\$647,444,000	\$626,735,000	\$615,112,000
Other noncurrent assets	\$18,797,000	\$38,545,000	\$50,648,000	\$54,361,000
Total assets	\$800,080,000	\$813,610,000	\$794,125,000	\$775,487,000
Deferred outflow of resources	\$50,957,000	\$139,841,000	\$113,288,000	\$95,754,000
Liabilities:				
Current liabilities	\$58,879,000	\$31,724,000	\$36,590,000	\$29,028,000
Noncurrent liabilities	\$468,893,000	\$575,495,000	\$497,462,000	\$499,148,000
Total liabilities	\$527,772,000	\$607,219,000	\$534,052,000	\$528,176,000
Deferred inflows of resources	\$31,027,000	\$67,715,000	\$110,302,000	\$83,920,000
Net Assets:				
Invested in capital assets, net of related debt	\$345,690,000	\$289,600,000	\$270,723,000	\$256,790,000
Restricted expendable	\$14,015,000	\$1,320,000	\$808,000	\$669,000
Unrestricted	(\$67,467,000)	(\$12,402,000)	(\$8,472,000)	\$1,686,000
Total net position	\$292,232,000	\$278,518,000	\$263,059,000	\$259,145,000
Ratio of current assets to current liabilities	1.95	4.02	3.11	3.65

Source: Treasurer's Office, TCNJ
(GASB 68)

EXTERNALLY SPONSORED ACTIVITIES

Awarded Grants & Sponsored Research - FY2024		
SCHOOL	DEPARTMENT	TOTAL AWARDS
Administration	Academic Affairs	\$5,030,000.00
	Graduate & Continuing Education	\$314,838.00
	IT Administration	\$27,976,746.00
Administration Total:		\$33,321,584.35
School of Art & Communications	Art Gallery	\$,9,400.00
	Design & Creative Technology	\$20,000.00
	Communications Studies	\$5,700.00
School of Art & Communications Total		\$35,100.00
School of Business	Small Business Development Ctr	\$76,000.00
School of Business Total		\$76,000.00
Centers & Institutes	Bonner/CCE	\$384,348.00
	EOF	\$469,809.00
	Sustainability Institute	\$2,230,428.98
Centers & Institutes Total		\$3,084,585.98
School of Education	Counselor Education	\$700,000.00
	Education Admin & Secondary Ed	\$350,843.00
	Special Education, Lang. & Lit.	\$444,982.00
School of Education Total		\$1,495,825.00
School of Engineering	Biomedical Engineering	\$205,000.00
	Civil Engineering	\$25,000.00
	Dean of Engineering	\$400,000.00
	Integrative STEM Education	\$458,500.00
School of Engineering Total		\$1,088,500.00
School of Humanities & Social Sciences	Philosophy & Religion	\$6,000.00
School of Humanities & Social Sciences Total		\$6,000.00
School of Nursing and Health Sciences	Nursing	\$1,172,974.00
	Public Health	\$375,651.00
School of Nursing and Health Sciences Total		\$1,548,625.00
School of Science	Biology	\$43,260.00
	Chemistry	\$1,011,868.00
	Physics	\$237,159.58
School of Science Total		\$1,292,287.58
Student Affairs	Anti-Violence Initiatives	\$273,666.00
	Counseling & Prevention Services	\$300,620.00
	Health & Wellness	\$476,458.00
Student Affairs Total		\$1,050,744.00
College of New Jersey Total Sponsored Awards		\$42,999,251.91

UNDERGRADUATE TUITION, FEES, ROOM AND BOARD CHARGES AND ANNUAL RATE OF INCREASE, ACADEMIC YEARS 2013-14 UP TO 2023-24

Tuition					Fees		Room & Board*	
	Resident		Non-Resident					
Year	\$	% Increase	\$	% Increase	\$	% Increase	\$	% Increase
2013-14	10,355	2.5%	20,760	2.5%	4,375	2.3%	11,343	3.0%
2014-15	10,562	2.0%	21,175	2.0%	4,462	2.0%	11,676	2.9%
2015-16	10,879	3.0%	21,810	3.0%	4,587	2.8%	12,498	7.0% ¹
2016-17	11,124	2.3%	22,301	2.3%	4,670	1.8%	12,881	3.1% ³
2017-18 ²	12,632	2.3%	24,061	2.0%	3,517	(24.7%)	13,200	2.5% ³
2018-19 ²	12,947	2.4%	24,662	2.5%	3,604	2.5%	13,617	3.2% ³
2019-20 ²	13,239	2.3%	25,217	2.3%	2,722	(24.5%)	14,048	3.1% ³
2020-21 ²	13,239	0%	25,217	0%	2,858	5.0%	13,416	(4.5% ³)
2021-22 ²	13,603	2.8%	19,044	0%	3,684	26.1%	13,752	2.5% ³
2022-23 ²	14,140	3.9%	19,797	3.9%	3,838	4.2%	14,144	2.8% ³
2023-24 ²	14,706	4.0%	20,589	4.0%	3,979	3.7%	14,553	2.9% ³

Source: CIE/Common Data Set

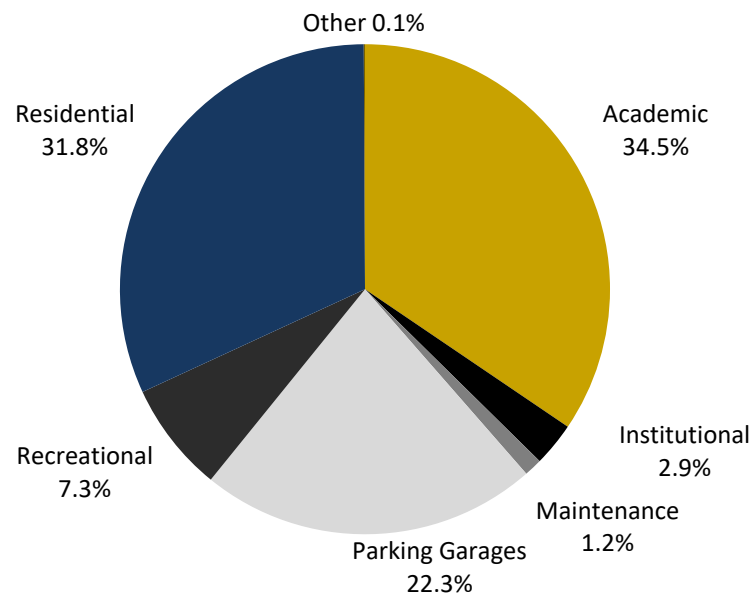
¹Board charges for 2015-16 reflect pricing for Carte Blanche 'B' plan

²Tuition for 2017-18 and up include fees for Student Services and Computing Access, which were formerly included under Fees

³Board Charges for AY2016-17 and up reflect pricing for 'Ala Carte I' plan

CAMPUS BUILDING INVENTORY 2023-24

	SqFt. %	Sq.Ft.	#Buildings
Academic	34.48%	1,244,717	16
Institutional	2.89%	104,148	2
Maintenance	1.19%	43,111	3
Parking Garages	22.27%	803,684	5
Recreational	7.28%	262,892	5
Residential (on campus)	31.80%	1,148,021	13
Other	0.08%	3,055	1
Total Campus Buildings	100.0%	3,609,628	45



Source: TCNJ Facilities, Residential Education Offices

THE COLLEGE OF NEW JERSEY LIBRARY

Facilities and Services

The R. Barbara Gitenstein Library at the College of New Jersey, provides high-quality information resources, expertise and a learning environment that enhance the search for knowledge and understanding. The Library serves as an intellectual, cultural and social center for the College, empowering TCNJ community members to become self-directed, lifelong learners and responsible citizens.

The five-story, 135,000 square-foot facility, in addition to housing the traditional library collections and services, provides 26 group study rooms, a café, a late-night study area, and a 105-seat multi-purpose auditorium.

TCNJ Library Collections:

Archives: Materials documenting the college's history, dating from the Normal School era in the mid-1800's to the present. Materials range from early annual reports and a historic textbook collection, through college publications, to photographs, slides, and memorabilia.

Children's/Young Adults Collection: This specialized area of over 29,000 titles contains many award-winning fiction and non-fiction resources for young people from preschool age through senior high school. Included are reference materials for school age students including: folk tales, poetry, subject guides to picture books, bibliotherapy, selected summaries, review sources and encyclopedias.

Curriculum & K-12 Elementary – High School Texts Collections: The Curriculum Reference Collection contains several thousand curriculum guides on microfiche from the Kraus Curriculum Development Library. Behavior objective guides by subject, multiple titles in the series, *Educators Guide to Free Materials*, and Scope and Sequence charts.

General Collection: The General Collection consists of more than 500,000 books that have been selected by faculty and subject specialist librarians to support course offerings of the college and to provide a broad representative collection of titles across many disciplines. This growing collection includes fiction, non-fiction, and children's/youth books.

Music & Media: The library's Music and Media Collections consist of over 10,000 volumes of printed music, more than 35,000 sound recordings in LP and CD format, and more than 50,000 video recordings in various formats.

Periodicals: The library has access to over 100,000 periodical titles, which are available in a variety of formats: print, online, and microfilm/microfiche.

Reference: The Reference Collection numbers more than 17,000 volumes and includes general encyclopedias, almanacs, dictionaries, atlases, and the like, as well as a large collection of subject specific reference works.

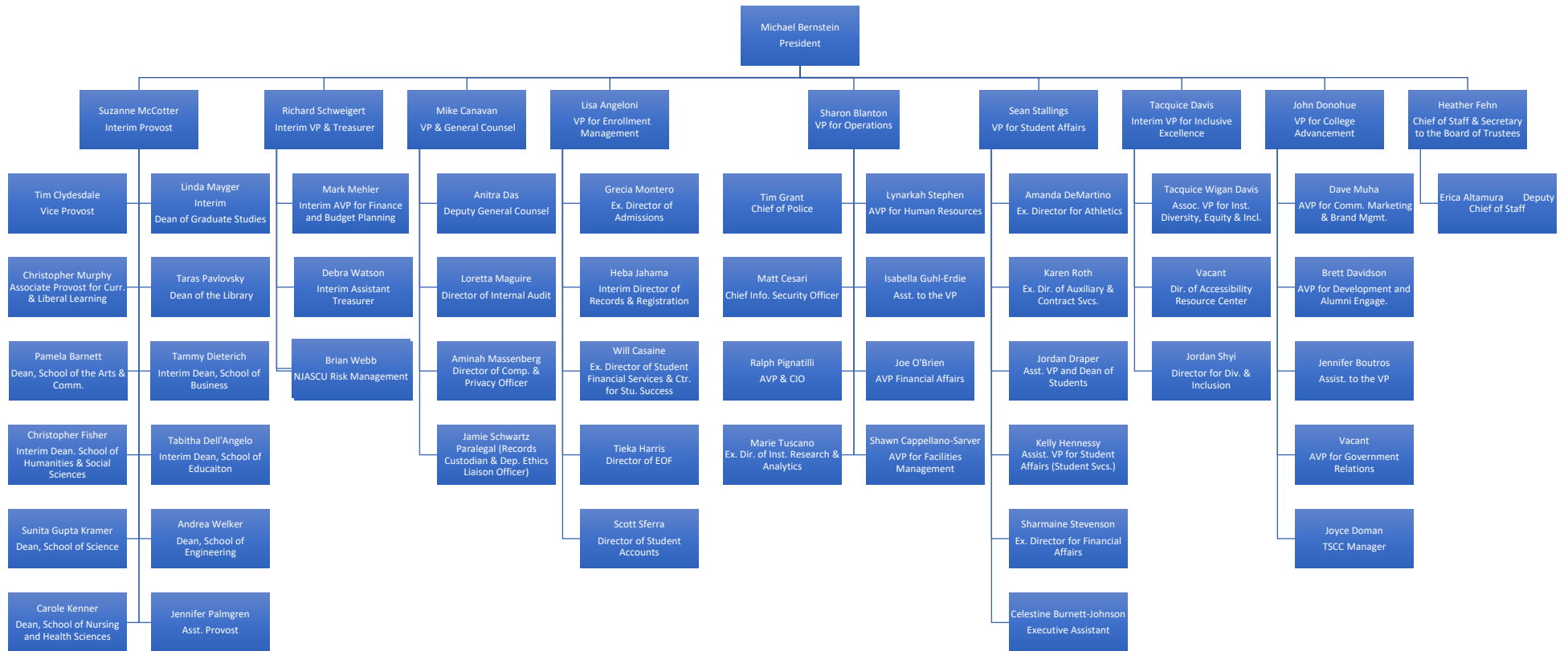
Library Holdings Fiscal Year 2023 (IPEDS Academic Libraries (2023-24)):

Library Collections/Circulations	Physical Collection	Digital/Electronic Collection
Books	509,623	327,234
Databases		131
Media	49,410	215,474
Serials	7,841	139,599
Total Collection	566,874	682,438
Total Circulation	7,343	560,016

**THE COLLEGE OF NEW JERSEY
REGIONAL, NATIONAL, AND SPECIALIZED ACCREDITORS**

Accreditation Board for Engineering and Technology (**ABET**)
American Chemical Society (**ACS**)
Association to Advance Collegiate Schools of Business (**AACSB**)
Association of Small Business Development Centers (**SBDC**)
Commission on Collegiate Nursing (**CCNE**)
Computing Accreditation Commission of Accreditation Board for Engineering and Technology (**CAC**)
Council on Education of the Deaf (**CED**)
Council on Education for Public Health (**CEPH**)
Council for Accreditation of Counseling & Related Education Programs (**CACREP**)
Engineering Accreditation Commission of Accreditation Board for Engineering and Technology (**EAC**)
Middle States Commission on Higher Education (**MSCHE**)
National Association of Schools of Music (**NASM**)
Association for Advancing Quality in Educator Preparation (**AAQEP**)
National Association of Schools of Art & Design (**NASAD**)

Administrative Organizational Chart 2023-24



MEMBERS OF THE BOARD OF TRUSTEES

AS OF JUNE 2024

Ex-Officio Members

Dr. Michael Bernstein, *President, Ex-Officio*

Officers of the Board

Ms. Rebecca Ostrov, *Chair*

Mr. Carl R. Gibbs, *Vice Chair*

Appointed Members

Mr. Kevin Drennan

Mr. Allen Silk

Mr. James Allen

Ms. Priscilla Nunez

Ms. Eleanor V. Horne

Mr. Shu Mukherjee

Ms. Rosie Hymerling

Mr. Jim Schulz

Ms. Tammy Tibbets

Ms. Madeline Urbish

Mr. Brian A. Markison

Ms. Treby Williams

Student Members

Ms. Noelle Halikman, *Student Trustee*

Ms. Annmarie Ekladious, *Alternate Student Trustee*

Faculty Representatives

Dr. Deborah Hutton

Dr. Cynthia Curtis

Staff Representatives

Mr. Raj Manimaran

Ms. Crystel Maldonado

Secretary to the Board

Ms. Heather Fehn

Equal Employment Opportunity & Diversity/Affirmative Action

The College of New Jersey is committed to equal opportunity, affirmative action and diversity. The College values diversity and is actively engaged in enriching the diversity of its faculty, staff and students. Central to the College's mission is creating a climate that is inclusive and respectful to everyone on campus. The College of New Jersey does not discriminate on the basis of race, creed, color, national origin, nationality, ancestry, age, sex/gender (including pregnancy), marital status, civil union status, domestic partnership status, familial status, religion, affectional or sexual orientation, gender identity or expression, atypical hereditary cellular or blood trait, genetic information, liability for service in the Armed Forces of the United States, or disability.