



# **Facts & Institutional Figures**

**Institutional Research and Analytics**

A 3D graphic consisting of several overlapping, semi-transparent blue and grey rectangular blocks arranged in a row. The text "2024 - 2025" is centered on the front face of the middle block.

**2024 - 2025**

# **The College of New Jersey**

## ***Academic Year 2024-25 Facts & Institutional Figures***

Prepared By:  
Office of Institutional Research and Analytics

Marie Tuscano  
*Executive Director*  
[tuscano@tcnj.edu](mailto:tuscano@tcnj.edu)

Rob Varghese  
*Business Intelligence Manager*  
[varghesr@tcnj.edu](mailto:varghesr@tcnj.edu)

Jennifer Sizoo  
*Research Analyst*  
[sizoo@tcnj.edu](mailto:sizoo@tcnj.edu)

Institutional Research and Analytics Homepage: <http://ira.tcnj.edu>

## Contents

|  |           |
|--|-----------|
| <b>Mission &amp; Vision</b>  | <b>4</b>  |
| <b>At A Glance</b>   | <b>5</b>  |
| <b>SYNOPSIS OF UNDERGRADUATE DEGREE PROGRAMS AND MAJORS</b>  | <b>7</b>  |
| <b>SYNOPSIS OF GRADUATE DEGREE PROGRAMS AND MAJORS</b>   | <b>9</b>  |
| <b>TOP 20 MOST POPULAR UNDERGRADUATE MAJORS</b>  | <b>11</b> |
| <b>AVERAGE SCHOLASTIC APTITUDE TEST SCORES BY ADMIT TYPE FOR FIRST-TIME FRESHMAN</b>                                       | <b>12</b> |
| <b>FIRST-TIME FRESHMAN ADMISSIONS ACTIVITY</b>   | <b>13</b> |
| <b>DISTRIBUTION OF COMPLETED ADMISSIONS APPLICATIONS AND ACCEPTED OFFERS</b>   | <b>14</b> |
| <b>ENROLLMENT BY SCHOOL AND ATTENDANCE STATUS</b>  | <b>15</b> |
| <b>TRENDS IN TOTAL ENROLLMENT</b>  | <b>17</b> |
| <b>ETHNICITY OF STUDENTS</b>   | <b>18</b> |
| <b>COLLEGE ENROLLMENT BY GENDER</b>  | <b>20</b> |
| <b>UNDERGRADUATE ENROLLMENT BY GENDER AND RESIDENCE STATUS</b>   | <b>21</b> |
| <b>ENROLLMENT BY MAJOR</b>   | <b>22</b> |
| <b>1<sup>st</sup> TO 2<sup>nd</sup> YEAR RETENTION FOR ENTERING FIRST-TIME, FULL-TIME FRESHMEN BY SCHOOL AND ETHNICITY</b> | <b>24</b> |
| <b>GRADUATION RATES FOR ENTERING FIRST-TIME, FULL-TIME FRESHMAN ETHNICITY AND GENDER</b>                                   | <b>25</b> |
| <b>DEGREES GRANTED BY SCHOOL, DEGREE TYPE AND MAJOR</b>  | <b>26</b> |
| <b>EMPLOYEES BY ETHNICITY AND IPEDS OCCUPATIONAL CATEGORY</b>  | <b>28</b> |
| <b>EMPLOYEES BY GENDER</b>   | <b>29</b> |
| <b>NUMBER OF FACULTY BY RANK AND TENURE STATUS</b>   | <b>30</b> |
| <b>TENURE STATUS AMONG FULL-TIME TENURE TRACK FACULTY</b>  | <b>31</b> |
| <b>AVERAGE TOTAL COMPENSATION OF FULL-TIME FACULTY BY RANK</b>   | <b>32</b> |
| <b>STATEMENT OF OPERATING ACTIVITIES</b>   | <b>33</b> |
| <b>OPERATING REVENUE, EXPENSES AND TRANSFERS</b>   | <b>34</b> |
| <b>CHANGE IN NET ASSETS</b>  | <b>36</b> |

|   |           |
|---|-----------|
| <b>EXTERNALLY SPONSORED ACTIVITIES</b>  | <b>37</b> |
| <b>UNDERGRADUATE TUITION, FEES, ROOM AND BOARD CHARGES PER YEAR AND ANNUAL RATE OF INCREASE</b> | <b>38</b> |
| <b>BUILDING INVENTORY</b>   | <b>39</b> |
| <b>COLLEGE LIBRARY</b>  | <b>40</b> |
| <b>THE COLLEGE OF NEW JERSEY REGIONAL, NATIONAL, AND SPECIALIZED ACCREDITORS</b>                | <b>41</b> |
| <b>ADMINISTRATIVE ORGANIZATION CHART</b>  | <b>42</b> |
| <b>BOARD OF TRUSTEES</b>  | <b>43</b> |



## Mission & Vision

---

### MISSION STATEMENT

The College of New Jersey, founded in 1855 as the New Jersey State Normal School, is primarily an undergraduate and residential college with targeted graduate programs. Grounded in the liberal arts, TCNJ's personalized, collaborative, and rigorous education engages students at the highest level within and beyond the classroom. TCNJ believes in the transformative power of education to develop critical thinkers, responsible citizens, and lifelong learners and leaders. The College empowers its diverse students, staff and faculty to sustain and enhance their communities both locally and globally.

### VISION

TCNJ will offer an unparalleled education in a vibrant, collaborative and inclusive community of learners who will make a distinct mark on the world. By following our values, we will serve as a national exemplar of public higher education, and we will do this while being committed to accessibility and affordability.



## At A Glance

---

### HISTORY/LOCATION

1855 New Jersey State Normal School  
1908 New Jersey State Normal School at Trenton  
1929 New Jersey State Teachers College and State Normal School at Trenton  
1937 New Jersey State Teachers College at Trenton  
1958 Trenton State College  
1996 The College of New Jersey

The College of New Jersey (TCNJ) is a highly selective institution that has earned national recognition for its commitment to excellence. TCNJ currently is ranked as the No. 1 public institution in the northern region of the country by U.S. News & World Report, and is considered a best value in higher education by both Princeton Review and Kiplinger's Personal Finance. TCNJ was also awarded, in 2006, a Phi Beta Kappa chapter, an honor shared by less than 10 percent of colleges and universities nationally.

The College of New Jersey's academic tradition reaches back to 1855 when it was established by the state legislature as the New Jersey State Normal School. It was the first teacher training school in the state and the ninth in the nation. Governor Rodman Price, sometimes called the founder of the New Jersey Normal School, promoted the idea of a training institute for New Jersey's teachers and mobilized support among influential state leaders.

Originally located on Clinton Avenue in Trenton, the Normal School flourished in the latter 1800s, expanding both its academic offerings and physical facilities. In 1925, the first four-year baccalaureate degree program was established. This change marked the beginning of TCNJ's transition from a normal school to a teachers' college and was accompanied by a change in physical surroundings. In 1928, a beautiful 210-acre tract of land in Ewing Township was purchased as a new site for the College.

Graduate study was instituted at the College in 1947, and accreditation from various national associations was forthcoming in the 1950s. The enactment of the Higher Education Act of 1966 paved the way for TCNJ to become a multipurpose institution by expanding its degree programs into a variety of fields other than education. By 1972, seventy percent of entering students were selecting non-teaching majors.

In the 1970s, a period of declining enrollments nationwide, the College decided to raise, rather than lower, its already high standards. Since that time, the academic profile of entering classes has continued to rise and as a result, the College has become one of the most competitive schools of its kind in the nation. Today the College provides academically prepared students with a challenging undergraduate education and a rewarding residential experience, small classes, and a prestigious faculty.

## ACADEMIC SCHOOLS, PROGRAMS AND DEGREES

The College of New Jersey emphasizes the undergraduate experience. A strong liberal arts core forms the foundation for a wealth of degree programs offered through TCNJ's seven schools—Arts & Communication; Business; Humanities & Social Sciences; Education; Science; Nursing, Health, & Exercise Science; and Engineering. The College is enriched by an honors program and extensive opportunities to study abroad, and its award-winning First-Year Experience and freshman orientation programs have helped make its retention and graduation rates among the highest in the country.

## CAMPUS

Known for its natural beauty, the College's campus is set on 289 tree-lined acres in suburban Ewing Township. The College has 39 major buildings, including a state-of-the-art library; 14 residence halls that accommodate 3,600 students; an award-winning student center; more than 20 academic computer laboratories; a full range of laboratories for nursing, microscopy, science, and technology; a music building with a 300-seat concert hall; and a collegiate recreation and athletic facilities complex. TCNJ has a full-time undergraduate enrollment of approximately 6,200 students (95 percent from New Jersey).

## STUDENT LIFE

The College of New Jersey encourages students to expand their talents and skills through more than 150 organizations that are open to students. These groups range from performing ensembles and professional and honor societies to student publications, Greek organizations, as well as intramural and club sports. The College also offers numerous leadership opportunities through the Student Finance Board, Student Government Association, and Residence Hall Government to name a few.

## ATHLETICS

High achievement and scholarship in the classroom have been mirrored by the success of The College of New Jersey's varsity student-athletes. Since the 1978–79 Lions wrestling team captured the College's first National Collegiate Athletic Association (NCAA) team championship, TCNJ has established itself as one of the nation's most successful Division III (non-athletic scholarship) programs. Since 1979, The College of New Jersey has amassed a total of 40 Division III crowns in six different sports. That number is the third most NCAA National Championships in Division III and ranks 13<sup>th</sup> across all divisions. In addition, the Lions have 50 individual NCAA championships. The Lions have also produced 54 Division III CoSIDA Academic All-Americans.

As impressive as the overall athletic record is, TCNJ's accomplishment as a leader in women's sports is even greater. Since NCAA Championships were initiated for women in 1981, only TCNJ has won 32 Division III team championships. The total does not include the Lions' lacrosse championship in 1981 or the softball championships in 1980 and 1981, which were sponsored by the AIAW (Association for Intercollegiate Athletics for Women) prior to women's sports inclusion in the NCAA. In the fall of 1999, TCNJ's women's athletic program was voted as the top Division III institution for female student-athletes by *Sports Illustrated for Women*.

**SYNOPSIS OF UNDERGRADUATE DEGREE PROGRAMS AND MAJORS**  
 (Full list available at: <https://academics.tcnj.edu/undergraduate-study>)

| College-Wide Programs   |  |        |
|---|--|--------|
| <b>School of the Arts &amp; Communication</b>   | <b>Art Education</b>   | BA     |
|   | <b>Art History and Visual Culture</b>  | BA     |
|   | <b>Communication Studies</b> (specializations in Interpersonal & Strategic Communication, Mass media and Social media, Digital filmmaking and Television, Health and Wellness Communication) | BA     |
|   | <b>Visual Arts</b> (options available in Fine Arts, Graphic Design and Lens-Based Art)   | BFA    |
|   | <b>Interactive Multimedia</b>  | BA     |
|   | <b>Journalism &amp; Professional Writing</b>   | BA     |
|   | <b>Music</b> (options available in Performance and Teacher Preparation)  | BA, BM |
| <b>School of Business</b>   | <b>Accounting</b>  | BS     |
|   | <b>Business Administration</b> (specializations in Finance, Interdisciplinary Business, Management, Marketing)   | BS     |
|   | <b>Economics</b> (options available in Secondary Education and 7 Year Medical)   | BA, BS |
| <b>School of Education</b>  | <b>Early Childhood Education</b> (Special Education Urban Education & Deaf and Hard of Hearing options)**  | BS     |
|   | <b>Education of the Deaf and Hard of Hearing/Elementary Education**</b>  | BS     |
|   | <b>Elementary Education**</b>  | BS     |
|   | <b>Secondary Education, Special Secondary Ed, Urban Secondary Ed**</b>   | BS     |
|   | <b>Special Education/Elementary Education**</b>  | BS     |
|   | <b>Speech-Language Pathology &amp; Audiology***</b>  | BS     |
|   | <b>Urban Education **</b>  | BS     |
| <i>**options available with non-certification at the baccalaureate level; 5-year dual certification at the master's level, *** combined 6-year BS/MS-SLP with Thomas Jefferson University</i> |  |        |
| <b>School of Engineering</b>  | <b>Biomedical Engineering</b> (7 Year Medical option)  | BSBME  |
|   | <b>Civil Engineering</b>   | BSCE   |
|   | <b>Computer Engineering</b>  | BSCoE  |
|   | <b>Electrical Engineering</b>  | BSEE   |
|   | <b>Engineering Science</b> (specializations in Engineering Management; Robotics option)  | BSES   |
|   | <b>Mechanical Engineering</b>  | BSME   |
|   | <b>Integrative STEM Education/Technology &amp; Engineering Education</b>   | BS     |



|   |   |       |
|---|---|-------|
| <b>School of Humanities &amp; Social Sciences</b>   | <b>African American Studies</b>   | BA    |
|   | <b>Anthropology*</b>  | BA    |
|   | <b>Criminology*</b>   | BA    |
|   | <b>English***</b>   | BA    |
|   | <b>History***</b>   | BA    |
|   | <b>Environmental Studies</b>  | BA    |
|   | <b>International Studies</b>  | BA    |
|   | <b>Philosophy **</b>  | BA    |
|   | <b>Political Science</b>  | BA    |
|   | <b>Psychology*</b>  | BA    |
|   | <b>Sociology*</b>   | BA    |
|   | <b>Spanish</b>  | BA    |
|   | <b>World Languages &amp; Linguistics</b>  | BA    |
|   | <b>Women's, Gender and Sexuality Studies*</b>   | BA    |
| <i>*Options available for 3-year bachelor's degree, ** option in 7 Year Medical Programs *** options in Secondary Education, Urban Ed or Special/Secondary Ed and 7 Year Medical Programs</i> |   |       |
| <b>School of Nursing and Health Sciences</b>  | <b>Kinesiology and Health Sciences</b> (options available in Teacher Preparation and 4+3 DPT) | BS    |
|   | <b>Nursing</b> (Accelerated BSN and RN to BSN options available)                              | BSN   |
|   | <b>Public Health</b> (option for 5 Year MPH program)  | BS    |
| <b>School of Science</b>  | <b>Biology*</b>   | BS/BA |
|   | <b>Chemistry*</b>   | BS    |
|   | <b>Computer Science</b>   | BS    |
|   | <b>Mathematics*</b>   | BS    |
|   | <b>Physics*</b>   | BS    |
| <i>*options available in Secondary Education and 7 Year Medical Programs (MD, PharmD, DPT, OD)</i>  |   |       |

| <b>Key</b>   |   |
|--------------|---|
| <b>BA</b>    | Bachelor of Arts                              |
| <b>BFA</b>   | Bachelor of Fine Arts                         |
| <b>BM</b>    | Bachelor of Music                             |
| <b>BS</b>    | Bachelor of Science                           |
| <b>BSBME</b> | Bachelor of Science in Biomedical Engineering |
| <b>BSCE</b>  | Bachelor of Science in Civil Engineering      |
| <b>BSCoE</b> | Bachelor of Science in Computer Engineering   |
| <b>BSEE</b>  | Bachelor of Science in Electrical Engineering |
| <b>BSE</b>   | Bachelor of Science in Engineering            |
| <b>BSME</b>  | Bachelor of Science in Mechanical Engineering |
| <b>BSN</b>   | Bachelor of Science in Nursing                |

**SYNOPSIS OF GRADUATE DEGREE PROGRAMS AND MAJORS**  
 (Full list available at: <https://graduate.tcnj.edu/explore-programs>)

| <b>Master's Level Programs</b>           |   |     |
|--|---|-----|
|  |   |     |
| <b>Master of Arts</b>                    | <b>School Counseling</b>  | MA  |
|  | <b>Clinical Mental Health Counseling</b>  | MA  |
|  | <b>Educational Studies</b>  | MA  |
|  | <b>English</b>  | MA  |
|  | <b>Professional Studies</b>   | MA  |
|  |   |     |
| <b>Master of Arts in Teaching</b>        | <b>Elementary Education</b> (Leads to Certification)  | MAT |
|  | <b>Early Childhood</b> (Leads to Certification)   | MAT |
|  | <b>MAT Early Childhood</b> (available only to graduates of TCNJ's undergraduate portion of this program)                      | MAT |
|  | <b>MAT Elementary</b> (available only to graduates of TCNJ's undergraduate portion of this program)                           |     |
|  | <b>Education of the Deaf and Hard of Hearing</b> (options in Elementary Ed – 5 YR program)                                    | MAT |
|  | <b>Special Education</b> (Leads to Certification) 5 YR program options in Early Childhood, Elementary and Secondary Education | MAT |
|  | <b>Urban Education</b> (Leads to certification) 5 YR program options in Early Childhood, Elementary and Secondary Ed          | MAT |
|  |   |     |
| <b>Master of Business Administration</b> | <b>Data Analytics or Strategy, Innovation &amp; Leadership tracks</b>   | MBA |
|  |   |     |
| <b>Master of Education</b>               | <b>Teaching English as a Second Language</b>  | MED |
|  | <b>Reading</b> (Leads to Certification)   | MED |
|  | <b>Literacy</b> (with Reading Specialist Certification)   | MED |
|  | <b>Educational Leadership: Instruction</b> (through RTC)  | MED |
|  | <b>Educational Leadership</b> (Leads to Principal Certification)  | MED |
|  | <b>Integrative STEM Education</b>   | MED |
|  | <b>Special Education</b> (Must be Certified in Other Area)  | MED |
|  | <b>Special Education- Teacher of Students with Blindness or Visual Impairment</b> (Must be Certified)                         | MED |
|  |   |     |
| <b>Master of Public Health</b>           | <b>Public Health</b> (Combined MBA/MPH option available)  | MPH |
|  |   |     |
| <b>Master of Public Policy</b>           | <b>Public Policy</b>  | MPP |
|  |   |     |

|                                     |  |     |
|-------------------------------------|--|-----|
| <b>Master of Science in Nursing</b> | <b>Family Nurse Practitioner</b>   | MSN |
|                                     | <b>Family Nurse Practitioner (for Certified NPs)</b>   | MSN |
|                                     | <b>Adult-Gerontological Nurse Practitioner</b>   | MSN |
|                                     | <b>Neonatal Nurse Practitioner</b>   | MSN |
|                                     | <b>Clinical Nurse Leader</b>   | MSN |
|                                     | <b>Bridge to the Master of Science in Nursing for RNs (not available for school nursing)</b> | MSN |
|                                     | <b>School Nurse</b>  | MSN |
|                                     |  |     |
| <b>Master of Science</b>            | <b>Accounting and Business Analytics</b>   | MS  |
|                                     | <b>Management and Organizations</b>  | MS  |

## 20 MOST POPULAR UNDERGRADUATE MAJORS FALL 2024

| Rank | Major                                  |
|------|--|
| 1    | Psychology                             |
| 2    | Finance                                |
| 3    | Biology (BS)                           |
| 4    | Marketing                              |
| 5    | Nursing (BSN)                          |
| 6    | Mechanical Engineering                 |
| 7    | Computer Science                       |
| 8    | Elementary Education (BS)              |
| 9    | Accountancy                            |
| 10   | Kinesiology & Health Sciences          |
| 11   | Criminology (BA)                       |
| 12   | Communication Studies                  |
| 13   | Management                             |
| 14   | Special Education                      |
| 15   | Visual Arts                            |
| 16   | Civil Engineer                         |
| 17   | Political Science                      |
| 18   | Speech, Language Pathology & Audiology |
| 19   | Interactive Multimedia                 |
| 20   | History (Secondary Education)          |

*Note: Ranks are based on primary major enrollment counts.*

*SOURCE: IRA Census Enrollment data*

## AVERAGE SAT SCORES BY ADMIT TYPE FOR FIRST-TIME FRESHMEN ENTERING FALL 2024

| SAT Evidence Based Reading/Writing Scores |     |
|---|-----|
| Regular Admits                            | 620 |
| EOF Admits                                | 565 |
| All Admits                                | 618 |
| National Average                          | 520 |
| New Jersey Average                        | 538 |
| SAT Mathematics Scores                    |     |
| Regular Admits                            | 617 |
| EOF Admits                                | 546 |
| All Admits                                | 615 |
| National Average                          | 508 |
| New Jersey Average                        | 528 |

Source: Institutional Research & Analytics/College Board SAT Annual Report 2024

### FIRST-TIME FRESHMEN ADMISSIONS ACTIVITY FALL 2024

|                     | Total Applications | Offered Admission | Offer Rate   | Offer Accepted | Yield        |
|---------------------|--------------------|-------------------|--------------|----------------|--------------|
| <b>All Students</b> |                    |                   |              |                |              |
| <b>Total</b>        | <b>12766</b>       | <b>7952</b>       | <b>62.3%</b> | <b>1563</b>    | <b>19.7%</b> |
| <b>NJ Residents</b> |                    |                   |              |                |              |
| <b>Total</b>        | <b>11114</b>       | <b>6979</b>       | <b>62.8%</b> | <b>1475</b>    | <b>21.1%</b> |
| <b>Non Resident</b> |                    |                   |              |                |              |
| <b>Total</b>        | <b>1652</b>        | <b>973</b>        | <b>58.9%</b> | <b>88</b>      | <b>9.0%</b>  |

### FIRST-TIME FRESHMEN FALL SEMESTER ADMISSIONS TRENDS

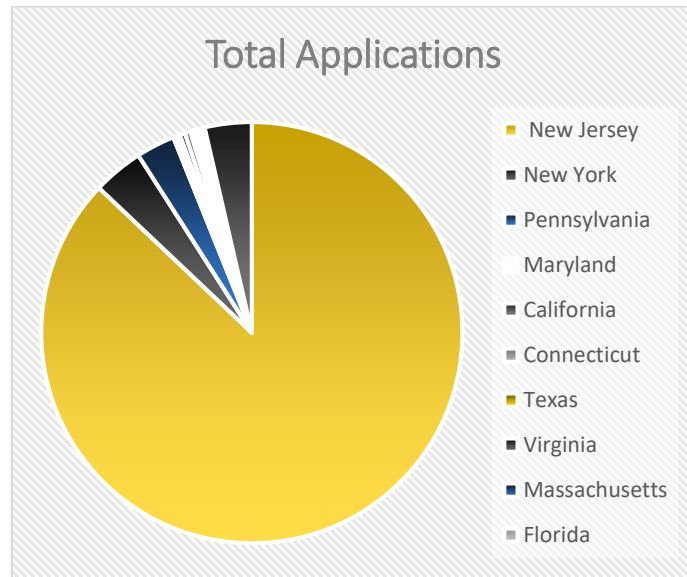
Fall 2017 - 2024

|  | 2017   | 2018   | 2019   | 2020   | 2021   | 2022   | 2023   | 2024   |
|--|--------|--------|--------|--------|--------|--------|--------|--------|
| <b>Number of Applications Received</b> | 12,898 | 13,625 | 13,824 | 13,199 | 10,393 | 10,302 | 11,668 | 12,766 |
| <b>Number of Acceptances</b>           | 6,130  | 6,785  | 6,811  | 6,743  | 6,442  | 6,637  | 7,251  | 7,952  |
| <b>Number of Students Matriculated</b> | 1,542  | 1,551  | 1,605  | 1,429  | 1,476  | 1,583  | 1,547  | 1,563  |
| <b>Accept Ratio:</b>                   | 48%    | 49%    | 49%    | 51%    | 62%    | 64%    | 62%    | 62%    |
| <b>Enrollment Yield:</b>               | 25%    | 23%    | 23%    | 21%    | 23%    | 24%    | 21%    | 19%    |

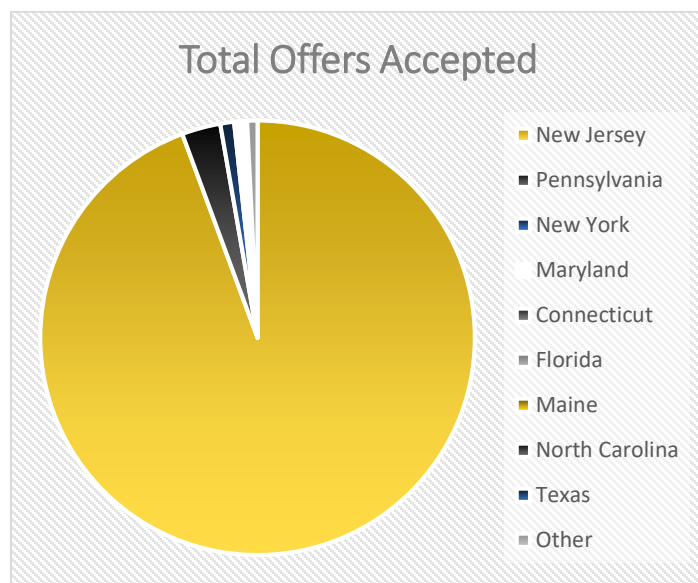
Source: Institutional Research & Analytics, Admissions fall semester Census date

## DISTRIBUTION OF COMPLETED ADMISSIONS APPLICATIONS AND ACCEPTED OFFERS FIRST-TIME FRESHMEN FROM SELECT STATES FALL 2024

| State                         | Total Applications | % of Total  |
|-------------------------------|--------------------|-------------|
| New Jersey                    | 11114              | 87.1%       |
| New York                      | 495                | 3.9%        |
| Pennsylvania                  | 380                | 3.0%        |
| Maryland                      | 68                 | 0.5%        |
| California                    | 51                 | 0.4%        |
| Connecticut                   | 55                 | 0.4%        |
| Texas                         | 41                 | 0.3%        |
| Virginia                      | 27                 | 0.2%        |
| Massachusetts                 | 41                 | 0.3%        |
| Florida                       | 34                 | 0.3%        |
| Other                         | 460                | 3.6%        |
| <b>Total All Applications</b> | <b>12766</b>       | <b>100%</b> |



| State                            | Offers Accepted | % of Total  |
|----------------------------------|-----------------|-------------|
| New Jersey                       | 1475            | 94.4%       |
| Pennsylvania                     | 45              | 2.9%        |
| New York                         | 16              | 1.0%        |
| Maryland                         | 5               | 0.3%        |
| Virginia                         | 2               | 0.1%        |
| Florida                          | 2               | 0.1%        |
| Delaware                         | 2               | 0.1%        |
| Massachusetts                    | 2               | 0.1%        |
| California                       | 2               | 0.1%        |
| Other                            | 12              | 0.8%        |
| <b>Total All Offers Accepted</b> | <b>1563</b>     | <b>100%</b> |



*Institutional Research & Analytics - fall 2024 Admissions Census date*

## ENROLLMENT BY SCHOOL AND ATTENDANCE STATUS FALL SEMESTERS 2020-2024

|   | 2020        | 2021        | 2022        | 2023        | 2024        |
|---|-------------|-------------|-------------|-------------|-------------|
| <b>College Total</b>                              | <b>7783</b> | <b>7589</b> | <b>7629</b> | <b>7652</b> | <b>8141</b> |
| <i>Full-Time</i>                                  | 7104        | 7019        | 7086        | 7073        | 7556        |
| <i>Part-Time</i>                                  | 679         | 570         | 543         | 579         | 585         |
|   |             |             |             |             |             |
| <b>Undergraduate Total College</b>                | <b>7105</b> | <b>6959</b> | <b>7039</b> | <b>7073</b> | <b>7435</b> |
| <i>Full-Time</i>                                  | 6898        | 6781        | 6841        | 6903        | 7267        |
| <i>Part-Time</i>                                  | 207         | 178         | 198         | 170         | 168         |
|   |             |             |             |             |             |
| <b>Graduate Total College</b>                     | <b>678</b>  | <b>630</b>  | <b>590</b>  | <b>579</b>  | <b>706</b>  |
| <i>Full-Time</i>                                  | 206         | 238         | 245         | 227         | 289         |
| <i>Part-Time</i>                                  | 472         | 392         | 345         | 352         | 417         |
|   |             |             |             |             |             |
| <b>School of Arts &amp; Communications</b>        | <b>765</b>  | <b>703</b>  | <b>711</b>  | <b>690</b>  | <b>706</b>  |
| <b><i>Undergraduate</i></b>                       | 765         | 703         | 711         | 689         | 705         |
| <i>Full-Time</i>                                  | 744         | 682         | 686         | 669         | 689         |
| <i>Part-Time</i>                                  | 21          | 21          | 25          | 20          | 16          |
| <b><i>Graduate</i></b>                            | 0           | 0           | 0           | 1           | 1           |
| <i>Part-Time</i>                                  | 0           | 0           | 0           | 1           | 1           |
|   |             |             |             |             |             |
| <b>School of Business</b>                         | <b>1294</b> | <b>1297</b> | <b>1330</b> | <b>1399</b> | <b>1580</b> |
| <b><i>Undergraduate</i></b>                       | 1241        | 1260        | 1307        | 1355        | 1510        |
| <i>Full-Time</i>                                  | 1210        | 1235        | 1268        | 1328        | 1476        |
| <i>Part-Time</i>                                  | 31          | 25          | 39          | 27          | 34          |
| <b><i>Graduate</i></b>                            | 53          | 37          | 23          | 44          | 70          |
| <i>Full-Time</i>                                  | 0           | 2           | 2           | 6           | 4           |
| <i>Part-Time</i>                                  | 53          | 35          | 21          | 38          | 66          |
|   |             |             |             |             |             |
| <b>School of Humanities &amp; Social Sciences</b> | <b>1525</b> | <b>1499</b> | <b>1473</b> | <b>1461</b> | <b>1484</b> |
| <b><i>Undergraduate</i></b>                       | 1500        | 1471        | 1447        | 1432        | 1451        |
| <i>Full-Time</i>                                  | 1464        | 1426        | 1414        | 1401        | 1421        |
| <i>Part-Time</i>                                  | 36          | 45          | 33          | 31          | 30          |
| <b><i>Graduate</i></b>                            | 25          | 28          | 26          | 29          | 33          |
| <i>Full-Time</i>                                  | 12          | 14          | 12          | 16          | 16          |
| <i>Part-Time</i>                                  | 13          | 14          | 14          | 13          | 13          |
|   |             |             |             |             |             |

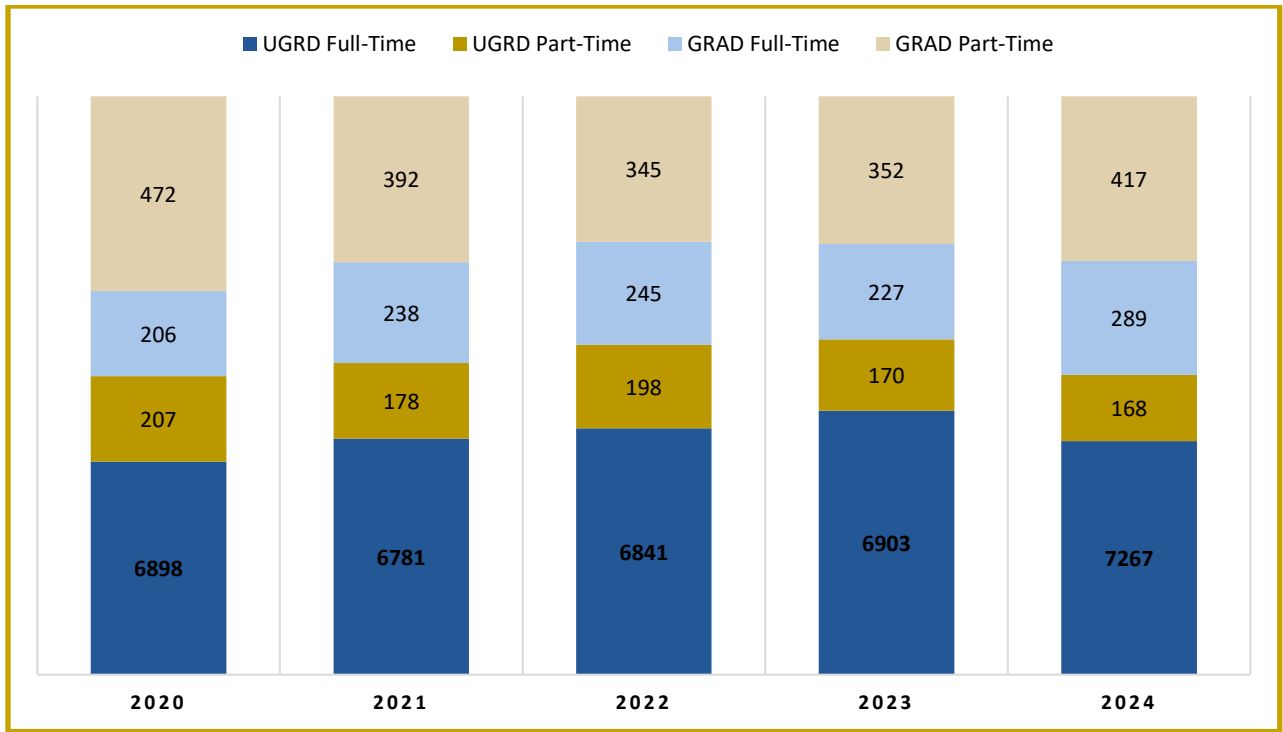


| <b>Fall Enrollment Continued</b>  | <b>2020</b> | <b>2021</b> | <b>2022</b> | <b>2023</b> | <b>2024</b> |
|---|-------------|-------------|-------------|-------------|-------------|
| <b>School of Education</b>  | <b>1263</b> | <b>1237</b> | <b>1213</b> | <b>1154</b> | <b>1226</b> |
| <b>Undergraduate</b>  | 856         | 813         | 772         | 743         | 752         |
| Full-Time   | 846         | 808         | 766         | 730         | 738         |
| Part-Time   | 10          | 5           | 6           | 13          | 14          |
| <b>Graduate</b>   | 407         | 424         | 441         | 411         | 474         |
| Full-Time   | 168         | 205         | 208         | 185         | 212         |
| Part-Time   | 239         | 219         | 233         | 226         | 262         |
|   |             |             |             |             |             |
| <b>School of Engineering</b>  | <b>770</b>  | <b>709</b>  | <b>654</b>  | <b>669</b>  | <b>724</b>  |
| <b>Undergraduate</b>  | 743         | 690         | 641         | 658         | 712         |
| Full-Time   | 726         | 679         | 629         | 644         | 697         |
| Part-Time   | 17          | 11          | 12          | 14          | 15          |
| <b>Graduate</b>   | 27          | 19          | 13          | 11          | 12          |
| Full-Time   | 2           | 1           | 0           | 0           | 2           |
| Part-Time   | 25          | 18          | 13          | 11          | 10          |
|   |             |             |             |             |             |
| <b>School of Nursing, Health &amp; Exercise Science</b>                   | <b>749</b>  | <b>706</b>  | <b>705</b>  | <b>734</b>  | <b>770</b>  |
| <b>Undergraduate</b>  | 684         | 647         | 661         | 683         | 726         |
| Full-Time   | 643         | 624         | 639         | 666         | 707         |
| Part-Time   | 41          | 23          | 22          | 17          | 19          |
| <b>Graduate</b>   | 65          | 59          | 44          | 51          | 44          |
| Full-Time   | 24          | 16          | 22          | 20          | 21          |
| Part-Time   | 41          | 43          | 22          | 31          | 23          |
|   |             |             |             |             |             |
| <b>School of Science</b>  | <b>1192</b> | <b>1163</b> | <b>1134</b> | <b>1088</b> | <b>1061</b> |
| <b>Undergraduate</b>  | 1192        | 1163        | 1134        | 1088        | 1061        |
| Full-Time   | 1161        | 1142        | 1102        | 1053        | 1039        |
| Part-Time   | 31          | 21          | 32          | 35          | 22          |
|   |             |             |             |             |             |
| <b>Non-Matriculated/<br/>Visiting/Undeclared<br/>/Independent Studies</b> | <b>225</b>  | <b>275</b>  | <b>409</b>  | <b>457</b>  | <b>590</b>  |
| <b>Undergraduate</b>  | 124         | 212         | 366         | 425         | 518         |
| Full-Time   | 104         | 185         | 337         | 412         | 500         |
| Part-Time   | 20          | 27          | 29          | 13          | 18          |
| <b>Graduate</b>   | 101         | 63          | 43          | 32          | 72          |
| Full-Time   | 0           | 2           | 1           | 0           | 30          |
| Part-Time   | 101         | 61          | 42          | 32          | 42          |
|   |             |             |             |             |             |

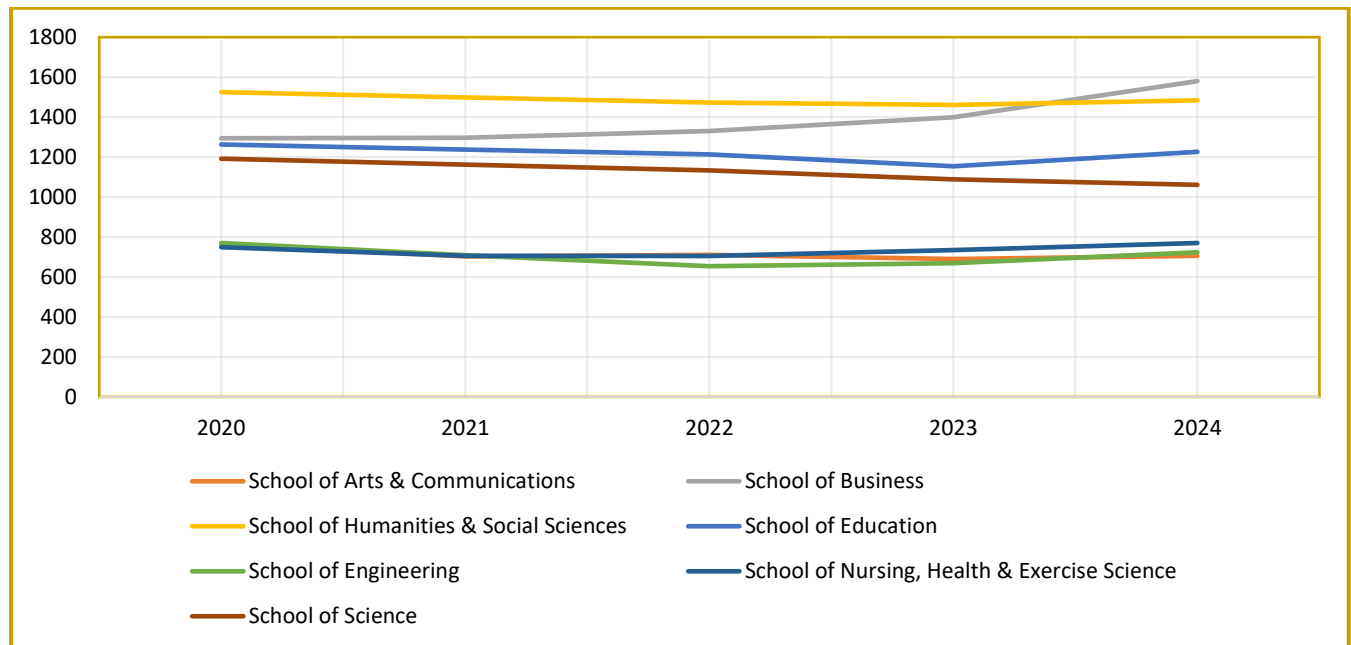
Official Fall Term Census Date headcounts

Note: Enrollment counts include primary majors only.

### TRENDS IN TOTAL ENROLLMENT FALL 2020 - 2024



### TRENDS IN TOTAL ENROLLMENT BY SCHOOL Fall 2020 – 2024



### ETHNICITY OF STUDENTS FALL 2020-2024

| Undergraduate<br>Race/Ethnicity | 2020 | 2021 | 2022 | 2023 | 2024 |
|---------------------------------|------|------|------|------|------|
| <b>African-American/Black</b>   | 394  | 379  | 385  | 401  | 437  |
| <b>Asian</b>                    | 824  | 794  | 760  | 748  | 802  |
| <b>Hispanic</b>                 | 1069 | 1165 | 1238 | 1260 | 1316 |
| <b>Native American</b>          | 7    | 6    | 5    | 3    | 4    |
| <b>Native Hawaiian</b>          | 8    | 6    | 3    | 3    | 3    |
| <b>Non-Resident Alien</b>       | 51   | 57   | 52   | 50   | 68   |
| <b>Not Reported</b>             | 216  | 201  | 221  | 224  | 272  |
| <b>Two or More Races</b>        | 130  | 152  | 197  | 214  | 231  |
| <b>White</b>                    | 4406 | 4199 | 4178 | 4170 | 4302 |
| <b>Total</b>                    | 7105 | 6959 | 7039 | 7073 | 7435 |

| Graduate<br>Race/Ethnicity    | 2020 | 2021 | 2022 | 2023 | 2024 |
|-------------------------------|------|------|------|------|------|
| <b>African-American/Black</b> | 40   | 37   | 36   | 42   | 32   |
| <b>Asian</b>                  | 42   | 41   | 37   | 37   | 31   |
| <b>Hispanic</b>               | 57   | 55   | 71   | 78   | 83   |
| <b>Native American</b>        | 3    | 0    | 2    | 2    | 1    |
| <b>Native Hawaiian</b>        | 1    | 1    | 2    | 2    | 1    |
| <b>Non-Resident Alien</b>     | 0    | 2    | 1    | 1    | 2    |
| <b>Not Reported</b>           | 138  | 119  | 93   | 85   | 224  |
| <b>Two or More Races</b>      | 2    | 3    | 6    | 10   | 6    |
| <b>White</b>                  | 395  | 372  | 342  | 322  | 326  |
| <b>Total</b>                  | 678  | 630  | 590  | 579  | 706  |

Official Fall Term Census Date enrollment counts

## ETHNICITY OF STUDENTS BY SCHOOL FALL 2024

### Undergraduate Race/Ethnicity

| Undergraduate  | African American | Asian      | Hispanic    | Native American | Native Hawaiian | Non-Resident Alien | Not Reported | Two or more races | White       | Total       |
|--|------------------|------------|-------------|-----------------|-----------------|--------------------|--------------|-------------------|-------------|-------------|
| <i>School of Arts &amp; Communications</i>             | 52               | 53         | 143         | 0               | 1               | 2                  | 13           | 22                | 419         | 705         |
| <i>School of Business</i>                              | 62               | 140        | 258         | 1               | 1               | 14                 | 58           | 39                | 937         | 1510        |
| <i>School of Humanities &amp; Social Sciences</i>      | 96               | 109        | 299         | 0               | 0               | 6                  | 32           | 45                | 864         | 1451        |
| <i>School of Education</i>                             | 19               | 43         | 121         | 0               | 0               | 1                  | 18           | 9                 | 541         | 752         |
| <i>School of Engineering</i>                           | 43               | 71         | 114         | 0               | 1               | 17                 | 25           | 23                | 418         | 712         |
| <i>School of Nursing Health &amp; Exercise Science</i> | 65               | 95         | 142         | 1               | 0               | 4                  | 40           | 37                | 342         | 726         |
| <i>School of Science</i>                               | 65               | 211        | 157         | 0               | 0               | 15                 | 51           | 32                | 530         | 1061        |
| <i>Non-Matriculated /Visiting &amp; Other</i>          | 35               | 80         | 82          | 2               | 0               | 9                  | 35           | 24                | 251         | 518         |
| <b>Total Undergraduate</b>                             | <b>437</b>       | <b>802</b> | <b>1316</b> | <b>4</b>        | <b>3</b>        | <b>68</b>          | <b>272</b>   | <b>231</b>        | <b>4302</b> | <b>7435</b> |

### Graduate Race/Ethnicity

| Graduate   | African American | Asian     | Hispanic  | Native American | Native Hawaiian | Non-Resident Alien | Not Reported | Two or more races | White      | Total      |
|--|------------------|-----------|-----------|-----------------|-----------------|--------------------|--------------|-------------------|------------|------------|
| <i>School of Arts &amp; Communications</i>             | 0                | 0         | 0         | 0               | 0               | 0                  | 0            | 0                 | 1          | 1          |
| <i>School of Business</i>                              | 0                | 1         | 6         | 0               | 0               | 1                  | 21           | 1                 | 40         | 70         |
| <i>School of Humanities &amp; Social Sciences</i>      | 0                | 1         | 5         | 0               | 0               | 0                  | 6            | 0                 | 21         | 33         |
| <i>School of Education</i>                             | 26               | 26        | 58        | 1               | 0               | 1                  | 140          | 4                 | 218        | 474        |
| <i>School of Engineering</i>                           | 0                | 1         | 1         | 0               | 0               | 0                  | 2            | 0                 | 8          | 12         |
| <i>School of Nursing Health &amp; Exercise Science</i> | 4                | 1         | 9         | 0               | 1               | 0                  | 13           | 0                 | 16         | 44         |
| <i>Non-Matriculated &amp; Visiting</i>                 | 1                | 0         | 4         | 0               | 0               | 0                  | 25           | 0                 | 10         | 40         |
| <i>Graduate Online Education</i>                       | 1                | 1         | 0         | 0               | 0               | 0                  | 17           | 1                 | 12         | 32         |
| <b>Total Graduate</b>                                  | <b>32</b>        | <b>31</b> | <b>83</b> | <b>1</b>        | <b>1</b>        | <b>2</b>           | <b>224</b>   | <b>6</b>          | <b>326</b> | <b>706</b> |

Official Fall Term Census Date enrollment counts/1<sup>st</sup> majors only

**ENROLLMENT BY GENDER – FALL 2020 - 2024 TOTAL COLLEGE**

| <b>Undergraduate</b> | <b>2020</b> | <b>2021</b> | <b>2022</b> | <b>2023</b> | <b>2024</b> |
|----------------------|-------------|-------------|-------------|-------------|-------------|
| <i>Female</i>        | 4045        | 3949        | 3992        | 3984        | 4090        |
| <i>Male</i>          | 3042        | 3010        | 3047        | 3089        | 3345        |
| <i>Not Reported</i>  | 18          | 0           | 0           | 0           | 0           |
| <b>Total</b>         | <b>7105</b> | <b>6959</b> | <b>7039</b> | <b>7073</b> | <b>7435</b> |
| <b>Graduate</b>      | <b>2020</b> | <b>2021</b> | <b>2022</b> | <b>2023</b> | <b>2024</b> |
| <i>Female</i>        | 478         | 480         | 462         | 454         | 565         |
| <i>Male</i>          | 133         | 120         | 128         | 125         | 141         |
| <i>Not Reported</i>  | 67          | 30          | 0           | 0           | 0           |
| <b>Total</b>         | <b>678</b>  | <b>630</b>  | <b>590</b>  | <b>579</b>  | <b>706</b>  |

**ENROLLMENT BY GENDER – FALL 2020-2024  
GRADUATE LEVEL – By SCHOOL**

|   | <b>2020</b> | <b>2021</b> | <b>2022</b> | <b>2023</b> | <b>2024</b> |
|---|-------------|-------------|-------------|-------------|-------------|
| <b>School of Arts &amp; Communications</b>              |             |             |             |             |             |
| <i>Graduate Students Enrolled</i>                       | <b>0</b>    | <b>0</b>    | <b>0</b>    | <b>1</b>    | <b>1</b>    |
| <i>Male</i>   | 0           | 0           | 0           | 1           | 1           |
| <b>School of Business</b>                               |             |             |             |             |             |
| <i>Graduate Students Enrolled</i>                       | <b>53</b>   | <b>37</b>   | <b>23</b>   | <b>44</b>   | <b>70</b>   |
| <i>Female</i>   | 28          | 15          | 9           | 18          | 27          |
| <i>Male</i>   | 25          | 22          | 14          | 26          | 43          |
| <i>Not Reported</i>                                     | 0           | 0           | 0           | 0           | 0           |
| <b>School of Humanities &amp; Social Sciences</b>       |             |             |             |             |             |
| <i>Graduate Students Enrolled</i>                       | <b>25</b>   | <b>28</b>   | <b>26</b>   | <b>29</b>   | <b>33</b>   |
| <i>Female</i>   | 12          | 20          | 18          | 20          | 21          |
| <i>Male</i>   | 13          | 7           | 8           | 9           | 12          |
| <i>Not Reported</i>                                     | 0           | 1           | 0           | 0           | 0           |
| <b>School of Education</b>                              |             |             |             |             |             |
| <i>Graduate Students Enrolled</i>                       | <b>407</b>  | <b>424</b>  | <b>441</b>  | <b>411</b>  | <b>474</b>  |
| <i>Female</i>   | 317         | 344         | 352         | 340         | 410         |
| <i>Male</i>   | 71          | 73          | 89          | 71          | 64          |
| <i>Not Reported</i>                                     | 19          | 7           | 0           | 0           | 0           |
| <b>School of Engineering</b>                            |             |             |             |             |             |
| <i>Graduate Students Enrolled</i>                       | <b>27</b>   | <b>19</b>   | <b>13</b>   | <b>11</b>   | <b>12</b>   |
| <i>Female</i>   | 20          | 16          | 10          | 6           | 8           |
| <i>Male</i>   | 7           | 3           | 3           | 5           | 4           |
| <i>Not Reported</i>                                     | 0           | 0           | 0           | 0           | 0           |
| <b>School of Nursing, Health &amp; Exercise Science</b> |             |             |             |             |             |
| <i>Graduate Students Enrolled</i>                       | <b>65</b>   | <b>59</b>   | <b>44</b>   | <b>51</b>   | <b>44</b>   |
| <i>Female</i>   | 58          | 50          | 36          | 43          | 36          |
| <i>Male</i>   | 6           | 7           | 8           | 8           | 8           |
| <i>Not Reported</i>                                     | 1           | 2           | 0           | 0           | 0           |

Official Fall Term Census Date enrollment counts

### ENROLLMENT BY GENDER – FALL 2020 - 2024 UNDERGRADUATE LEVEL – BY SCHOOL

|   | 2020        | 2021        | 2022        | 2023        | 2024        |
|---|-------------|-------------|-------------|-------------|-------------|
| School of Arts & Communications   | <b>765</b>  | <b>703</b>  | <b>711</b>  | <b>689</b>  | <b>705</b>  |
| <i>Female</i>   | 467         | 425         | 428         | 411         | 413         |
| <i>Male</i>   | 298         | 278         | 283         | 278         | 292         |
| School of Business  | <b>1241</b> | <b>1260</b> | <b>1307</b> | <b>1355</b> | <b>1510</b> |
| <i>Female</i>   | 455         | 450         | 446         | 480         | 527         |
| <i>Male</i>   | 786         | 810         | 861         | 875         | 983         |
| School of Education   | <b>856</b>  | <b>813</b>  | <b>772</b>  | <b>743</b>  | <b>752</b>  |
| <i>Female</i>   | 788         | 749         | 719         | 694         | 700         |
| <i>Male</i>   | 68          | 64          | 53          | 49          | 52          |
| School of Engineering   | <b>743</b>  | <b>690</b>  | <b>641</b>  | <b>658</b>  | <b>712</b>  |
| <i>Female</i>   | 197         | 177         | 164         | 168         | 184         |
| <i>Male</i>   | 546         | 513         | 477         | 490         | 528         |
| School of Humanities & Social Sciences  | <b>1500</b> | <b>1471</b> | <b>1447</b> | <b>1432</b> | <b>1451</b> |
| <i>Female</i>   | 951         | 936         | 955         | 961         | 975         |
| <i>Male</i>   | 549         | 535         | 492         | 471         | 476         |
| School of Nursing Health & Exercise Science   | <b>684</b>  | <b>647</b>  | <b>661</b>  | <b>683</b>  | <b>726</b>  |
| <i>Female</i>   | 515         | 488         | 502         | 505         | 431         |
| <i>Male</i>   | 169         | 159         | 159         | 178         | 195         |
| School of Science   | <b>1192</b> | <b>1163</b> | <b>1134</b> | <b>1088</b> | <b>1061</b> |
| <i>Female</i>   | 624         | 626         | 627         | 578         | 558         |
| <i>Male</i>   | 568         | 537         | 507         | 510         | 503         |
| Other Undergraduate: <i>Non-Matriculated, Undeclared, Visiting, Independent Studies</i> | <b>124</b>  | <b>212</b>  | <b>366</b>  | <b>425</b>  | <b>518</b>  |
| <i>Female</i>   | 61          | 98          | 151         | 187         | 202         |
| <i>Male</i>   | 63          | 114         | 215         | 238         | 316         |

*Official Fall term Census Date Enrollment Counts*

**ENROLLMENT BY RESIDENCE (In-State/Out-of-State)**  
**FALL 2020 - 2024**

| <b>Undergraduate</b>  | <b>2020</b> | <b>2021</b> | <b>2022</b> | <b>2023</b> | <b>2024</b> |
|---|-------------|-------------|-------------|-------------|-------------|
| <i>NJ Resident</i>  | 6703        | 6582        | 6662        | 6739        | 7093        |
| <i>Non-Resident</i>   | 402         | 377         | 377         | 334         | 342         |
| Total   | 7105        | 6959        | 7039        | 7073        | 7435        |
| <b>Graduate</b>   | <b>2020</b> | <b>2021</b> | <b>2022</b> | <b>2023</b> | <b>2024</b> |
| <i>NJ Resident</i>  | 527         | 522         | 501         | 519         | 643         |
| <i>Non-Resident</i>   | 151         | 108         | 89          | 60          | 63          |
| Total   | 678         | 630         | 590         | 579         | 706         |
| <b>Residence By School</b>  | <b>2020</b> | <b>2021</b> | <b>2022</b> | <b>2023</b> | <b>2024</b> |
| Undergraduate School of Arts & Communications                     | 765         | 703         | 711         | 689         | 705         |
| <i>NJ Resident</i>  | 729         | 679         | 677         | 659         | 673         |
| <i>Non-Resident</i>   | 36          | 26          | 34          | 30          | 32          |
| Undergraduate School of Business                                  | 1241        | 1260        | 1307        | 1355        | 1510        |
| <i>NJ Resident</i>  | 1179        | 1211        | 1256        | 1300        | 1454        |
| <i>Non-Resident</i>   | 62          | 49          | 51          | 55          | 56          |
| Undergraduate School of Education                                 | 856         | 813         | 772         | 743         | 752         |
| <i>NJ Resident</i>  | 806         | 768         | 734         | 705         | 718         |
| <i>Non-Resident</i>   | 50          | 45          | 38          | 38          | 34          |
| Undergraduate School of Engineering                               | 743         | 690         | 641         | 658         | 712         |
| <i>NJ Resident</i>  | 672         | 625         | 594         | 612         | 662         |
| <i>Non-Resident</i>   | 71          | 65          | 47          | 46          | 50          |
| Undergraduate School of Humanities & Social Sciences              | 1500        | 1471        | 1447        | 1432        | 1451        |
| <i>NJ Resident</i>  | 1445        | 1414        | 1380        | 1371        | 1400        |
| <i>Non-Resident</i>   | 55          | 57          | 67          | 61          | 51          |
| Undergraduate School of Nursing Health & Exercise Science         | 684         | 647         | 661         | 683         | 726         |
| <i>NJ Resident</i>  | 616         | 588         | 612         | 641         | 688         |
| <i>Non-Resident</i>   | 68          | 59          | 49          | 42          | 38          |
| Undergraduate School of Science                                   | 1192        | 1163        | 1134        | 1088        | 1061        |
| <i>NJ Resident</i>  | 1137        | 1106        | 1073        | 1050        | 1010        |
| <i>Non-Resident</i>   | 55          | 57          | 61          | 38          | 51          |
| Other Undergraduate: <i>Non-Matriculated, Undecided, Visiting</i> | 124         | 212         | 366         | 425         | 518         |
| <i>NJ Resident</i>  | 119         | 193         | 336         | 401         | 488         |
| <i>Non-Resident</i>   | 5           | 19          | 30          | 24          | 30          |

Official Fall term Census Date Enrollment Counts

## ENROLLMENT BY MAJOR Academic Year 2020 - 2024

Please use the following links to access tables that contain enrollment data for majors over the past five fall and spring terms. The enrollment tables include enrollment by plan (1<sup>st</sup> Major) with breakouts for FT/PT, Race/Ethnicity, Gender, Academic Level, Second Major, and Sub-plan and are derived from the fall and spring semester census dates.

[TCNJ FB Enrollment AY2024-25.xlsx](#)

## GRADUATION/TRANSFER OUT RATES New First-Time, Full-Time Freshmen & Transfer Cohorts Fall Terms 2009 – 2018

| IPEDS<br>Reporting<br>Year | Cohort<br>Year | FSH Cohort<br># | Transfer<br>Out Rate | FSH<br>Graduation<br>Rate<br>(% completing<br>within 6 years) | Transfer<br>Cohort # | Transfer<br>Cohort<br>Graduation<br>Rate |
|----------------------------|----------------|-----------------|----------------------|---|----------------------|--|
| 2024-25                    | 2018           | 1548            | 10%                  | 86%   | 233                  | 86%                                      |
| 2023-24                    | 2017           | 1540            | 10%                  | 85%   | 239                  | 86%                                      |
| 2022-23                    | 2016           | 1454            | 9%                   | 86%   | 266                  | 87%                                      |
| 2021-22                    | 2015           | 1451            | 9%                   | 87%   | 251                  | 83%                                      |
| 2020-21                    | 2014           | 1418            | 9%                   | 86%   | 267                  | 87%                                      |
| 2019-20                    | 2013           | 1404            | 12%                  | 86%   | 255                  | 87%                                      |
| 2018-19                    | 2012           | 1363            | 10%                  | 86%   | 258                  | 81%                                      |
| 2017-18                    | 2011           | 1371            | 11%                  | 87%   | 262                  | 80%                                      |
| 2016-17                    | 2010           | 1421            | 11%                  | 87%   | 341                  | 83%                                      |
| 2015-16                    | 2009           | 1283            | 10%                  | 85%   | 324                  | 86%                                      |

*IPEDS Graduate Rate Surveys & Retention/Graduation data (reporting years 2015-2025), graduation within 150% time*



**FIRST YEAR TO SECOND YEAR  
RETENTION RATES FOR  
ENTERING FIRST-TIME, FULL-TIME FRESHMEN  
BY ETHNICITY  
FALL 2018 – FALL 2023**

|  | Fall 2018 | Fall 2019 | Fall 2020 | Fall 2021 | Fall 2022 | Fall 2023 | 5 YR AVG %<br>Retained from<br>cohort to 2nd<br>Fall Term |
|--|-----------|-----------|-----------|-----------|-----------|-----------|---|
| <b>Total #<br/>Freshmen in<br/>Cohort</b>                        | 1548      | 1605      | 1427      | 1476      | 1572      | 1547      | --  |
| <b>African<br/>American</b>                                      | 89.74%    | 89.16%    | 86.76%    | 85.42%    | 85.19%    | 93.94%    | 88.37%  |
| <b>Asian</b>   | 94.86%    | 95.77%    | 91.91%    | 94.05%    | 88.39%    | 93.55%    | 93.09%  |
| <b>Hispanic</b>  | 87.95%    | 93.75%    | 92.95%    | 88.07%    | 86.44%    | 84.85%    | 89.00%  |
| <b>Native<br/>American</b>                                       | 50.00%    | 100.00%   | 0.00%     | 0.00%     | 0.00%     | 0.00%     | 75.00%  |
| <b>Native<br/>Hawaiian</b>                                       | 100%      | NA        | 100.00%   | NA        | 100.00%   | 100.00%   | 100.00%   |
| <b>Not Reported</b>  | 92.73%    | 90.91%    | 80.95%    | 92.86%    | 92.98%    | 96.88%    | 91.22%  |
| <b>Two or More<br/>Races</b>                                     | 75.00%    | 90.57%    | 91.30%    | 84.21%    | 88.24%    | 96.67%    | 87.67%  |
| <b>White</b>   | 93.98%    | 94.01%    | 92.49%    | 91.47%    | 92.34%    | 91.99%    | 92.71%  |
| <b>% Retained<br/>from Total<br/>Cohort to 2nd<br/>Fall Term</b> | 92.52%    | 93.77%    | 91.94%    | 90.24%    | 90.08%    | 91.21%    | 91.63%  |

**1<sup>st</sup> YEAR to 2<sup>nd</sup> YEAR FRESHMEN RETAINED in 1<sup>st</sup> YR SCHOOL  
FALL 2018 – FALL 2022**

| School  | 2017   | 2018   | 2019   | 2020   | 2021   |
|---|--------|--------|--------|--------|--------|
| <b>Arts &amp; Communication</b>               | 84.90% | 82.30% | 87.00% | 81.80% | 90.30% |
| <b>Business</b>                               | 91.40% | 89.40% | 93.10% | 82.60% | 86.00% |
| <b>Education</b>                              | 87.20% | 89.90% | 87.60% | 87.70% | 85.40% |
| <b>Engineering</b>                            | 86.20% | 85.60% | 88.30% | 89.30% | 69.10% |
| <b>Humanities and Social Sciences</b>         | 82.40% | 83.10% | 84.80% | 80.90% | 85.20% |
| <b>Nursing, Health &amp; Exercise Science</b> | 86.30% | 86.70% | 88.40% | 91.40% | 78.90% |
| <b>Science</b>                                | 83.40% | 86.70% | 85.00% | 87.80% | 84.60% |
| <b>AVG % All TCNJ Schools</b>                 | 86.00% | 86.20% | 87.70% | 85.90% | 85.90% |

% Includes New Entering Freshmen Cohort Retained in First Year School only

Source: Official Fall term Census Date Enrollment/freshmen cohorts

**4 YEAR, 5 YEAR & 6 YEAR  
IPEDS GRADUATION RATES FOR  
ENTERING FIRST-TIME FRESHMEN  
BY ETHNICITY & GENDER  
FALL 2014 – FALL 2018 COHORTS**

| Entering Cohort Year                      | 2014       | 2015       | 2016       | 2017       | 2018       |
|---|------------|------------|------------|------------|------------|
| Total Number in Cohort                    | 1418       | 1453       | 1457       | 1540       | 1548       |
| <i>% Graduating within 4 Years</i>        | <b>75%</b> | <b>76%</b> | <b>75%</b> | <b>75%</b> | <b>76%</b> |
| <i>% Female</i>                           | 81         | 80         | 81         | 81         | 78         |
| <i>% Male</i>                             | 66         | 70         | 67         | 68         | 73         |
| <i>% African-American</i>                 | 58         | 62         | 59         | 73         | 58         |
| <i>% Asian</i>                            | 73         | 75         | 71         | 73         | 78         |
| <i>% Hispanic</i>                         | 71         | 68         | 69         | 71         | 69         |
| <i>% Native American</i>                  | 80         | 75         | NA         | NA         | 50         |
| <i>% Native Hawaiian/Pacific Islander</i> | 50         | 80         | NA         | 50         | 50         |
| <i>% US Non-Resident</i>                  | 0          | 50         | 50         | 71         | 83         |
| <i>% White</i>                            | 77         | 80         | 79         | 77         | 80         |
| <i>% Two or More Races</i>                | 83         | 43         | 100        | 71         | 63         |
| <i>% Not Reported</i>                     | 88         | 69         | 92         | 80         | 74         |
| <i>% Graduating within 5 Years</i>        | <b>85%</b> | <b>85%</b> | <b>84%</b> | <b>84%</b> | <b>84%</b> |
| <i>% Female</i>                           | 89         | 87         | 88         | 88         | 86         |
| <i>% Male</i>                             | 79         | 81         | 79         | 78         | 82         |
| <i>% African-American</i>                 | 71         | 72         | 75         | 84         | 67         |
| <i>% Asian</i>                            | 83         | 88         | 80         | 83         | 86         |
| <i>% Hispanic</i>                         | 85         | 80         | 79         | 79         | 79         |
| <i>% Native American</i>                  | 80         | 75         | NA         | NA         | 50         |
| <i>% Native Hawaiian/Pacific Islander</i> | 100        | 100        | NA         | 75         | 100        |
| <i>% US Non-Resident</i>                  | 50         | 67         | 75         | 100        | 83         |
| <i>% White</i>                            | 86         | 87         | 87         | 85         | 87         |
| <i>% Two or More Races</i>                | 83         | 43         | 100        | 71         | 63         |
| <i>% Not Reported</i>                     | 92         | 73         | 92         | 83         | 81         |
| <i>% Graduating within 6 Years</i>        | <b>86%</b> | <b>87%</b> | <b>86%</b> | <b>85%</b> | <b>86%</b> |
| <i>% Female</i>                           | 90         | 89         | 89         | 89         | 87         |
| <i>% Male</i>                             | 81         | 84         | 82         | 80         | 84         |
| <i>% African-American</i>                 | 76         | 74         | 78         | 87         | 73         |
| <i>% Asian</i>                            | 85         | 92         | 83         | 84         | 87         |
| <i>% Hispanic</i>                         | 87         | 83         | 80         | 82         | 81         |
| <i>% Native American</i>                  | 80         | 75         | NA         | NA         | 50         |
| <i>% Native Hawaiian/Pacific Islander</i> | 100        | 100        | NA         | 75         | 100        |
| <i>% US Non-Resident</i>                  | 50         | 67         | 100        | 100        | 83         |
| <i>% White</i>                            | 88         | 89         | 88         | 86         | 89         |
| <i>% Two or More Races</i>                | 83         | 57         | 100        | 71         | 63         |
| <i>% Not Reported</i>                     | 96         | 73         | 92         | 84         | 81         |

Source: IPEDS Graduate Rate Survey, first-time freshmen cohorts

**DEGREES GRANTED BY SCHOOL AND DEGREE TYPE  
FY2020-2024**

| School                         | Degree | 2019-20 | 2020-21 | 2021-22 | 2022-23 | 2023-24 |
|--------------------------------|--------|---------|---------|---------|---------|---------|
| Arts & Comm UGRD               | BA     | 156     | 167     | 144     | 142     | 123     |
| Arts & Comm UGRD               | BFA    | 39      | 26      | 24      | 40      | 41      |
| Arts & Comm UGRD               | BM     | 12      | 13      | 19      | 16      | 11      |
| Business GRAD                  | CER    | -       | -       | -       | -       | 4       |
| Business GRAD                  | MBA    | -       | -       | 28      | 22      | 13      |
| Business UGRD                  | BA     | 2       | 3       | 4       | 7       | 12      |
| Business UGRD                  | BS     | 361     | 340     | 336     | 336     | 318     |
| Humanities & Soc. Sci GRAD     | MA     | 16      | 12      | 21      | 18      | 16      |
| Humanities & Soc. Sci GRAD     | MPP    | -       | -       | -       | -       | 2       |
| Humanities & Soc. Sci UGRD     | BA     | 338     | 370     | 377     | 386     | 366     |
| Education GRAD                 | CER    | 18      | 7       | 4       | 0       | 3       |
| Education GRAD                 | MA     | 36      | 49      | 47      | 71      | 61      |
| Education GRAD                 | MAT    | 90      | 109     | 103     | 104     | 94      |
| Education GRAD                 | MED    | 159     | 181     | 143     | 108     | 104     |
| Education GRAD                 | SCT    | 67      | 105     | 107     | 83      | 61      |
| Education UGRD                 | BS     | 176     | 199     | 213     | 193     | 194     |
| Engineering GRAD               | MED    | 8       | 7       | 17      | 6       | 7       |
| Engineering UGRD               | BS     | 6       | 8       | 12      | 7       | 5       |
| Engineering UGRD               | BSBM   | 18      | 37      | 37      | 37      | 22      |
| Engineering UGRD               | BSCE   | 23      | 33      | 31      | 29      | 26      |
| Engineering UGRD               | BSCO   | 17      | 14      | 18      | 12      | 13      |
| Engineering UGRD               | BSEE   | 19      | 18      | 21      | 18      | 8       |
| Engineering UGRD               | BSES   | 10      | 11      | 2       | 3       | 6       |
| Engineering UGRD               | BSME   | 33      | 41      | 51      | 40      | 35      |
| Independent Studies UGRD       | BA     | 8       | 4       | 2       | 2       | 2       |
| Nursing & Health Sciences GRAD | CER    | 0       | 0       | 3       | 2       | 1       |
| Nursing & Health Sciences GRAD | MPH    | 2       | 9       | 19      | 7       | 21      |
| Nursing & Health Sciences GRAD | MSN    | 16      | 11      | 12      | 12      | 5       |
| Nursing & Health Sciences GRAD | SCT    | 2       | 0       | 0       | 2       | 0       |
| Nursing & Health Sciences UGRD | BS     | 98      | 112     | 98      | 88      | 103     |
| Nursing & Health Sciences UGRD | BSN    | 92      | 73      | 69      | 67      | 66      |
| Science UGRD                   | BA     | 3       | 12      | 20      | 18      | 25      |
| Science UGRD                   | BS     | 237     | 238     | 245     | 278     | 213     |

Source: IRA Completion Statistics (defined by Federal IPEDS Completions standards – July 1 through June 30)

### FRESHMEN COHORT GRADUATION RATE BY SCHOOL FALL 2018 Freshman Cohort

| 2018 First Time Freshmen – 4, 5, 6 Year Graduation Rates |                       |                                  |                                  |                                  |  |
|--|-----------------------|----------------------------------|----------------------------------|----------------------------------|--|
| School   | FSH Cohort Original # | Graduating TCNJ within 4 Years % | Graduating TCNJ within 5 Years % | Graduating TCNJ within 6 Years % | *Graduating from School within 6 Years % |
| Arts & Communications                                    | 181                   | 71.8%                            | 80.1%                            | 82.3%                            | 65.2%                                    |
| Business   | 216                   | 82.9%                            | 89.8%                            | 90.7%                            | 85.2%                                    |
| Humanities & Social Sciences                             | 308                   | 76.0%                            | 80.2%                            | 82.8%                            | 68.5%                                    |
| Education  | 188                   | 80.9%                            | 89.9%                            | 90.4%                            | 77.7%                                    |
| Engineering  | 215                   | 70.7%                            | 80.9%                            | 82.8%                            | 72.6%                                    |
| Nursing, Health & Exercise Science                       | 128                   | 70.3%                            | 78.1%                            | 82.8%                            | 72.7%                                    |
| Science  | 315                   | 75.2%                            | 85.7%                            | 87.3%                            | 69.5%                                    |
| <b>Total Cohort</b>                                      | <b>1551</b>           | <b>75.7%</b>                     | <b>83.8%</b>                     | <b>85.7%</b>                     | <b>73.1%</b>                             |

\* Graduating from School within 6 years % - includes only students that graduated from same School as enrolled in Freshman first term.

### DEGREES GRANTED BY SCHOOL AND PROGRAM Academic Years 2020 – 2024

Use the link below to access tables containing the number of degrees and certificates awarded by School, plan, race/ethnicity and gender from academic years 2020-21 up to 2024-25.

[TCNJ FB Degrees Awarded AY2020\\_2024.xlsx](#)

## EMPLOYEES BY IPEDS OCCUPATIONAL CATEGORY 2024 - 2025

| Number of Staff by Employment Status and Occupational Category                                     |                      |                      |             |
|--|----------------------|----------------------|-------------|
| Academic Year 2024 - 2025  |                      |                      |             |
| Occupational Category  | Reported Values      |                      | FTE Staff   |
|  | # of Full-time Staff | # of Part-time Staff |             |
| <b>Total Number of Staff</b>   | <b>1097</b>          | <b>420</b>           | <b>1237</b> |
| <i>Instructional Staff</i>   | 361                  | 394                  | 492         |
| <i>Librarians, Curators, Archivists</i>  | 27                   | 2                    | 28          |
| <i>Student &amp; Academic Affairs and other Education Services</i>                                 | 93                   | 13                   | 97          |
| <i>Management Occupations</i>  | 100                  | 0                    | 100         |
| <i>Business &amp; Financial Operations</i>   | 72                   | 0                    | 72          |
| <i>Computer, Engineering &amp; Science Occupations</i>   | 42                   | 1                    | 42          |
| <i>Community, Social Service, Legal, Arts, Design, Entertainment, Sports and Media Occupations</i> | 110                  | 0                    | 110         |
| <i>Healthcare Practitioners &amp; Technical Occupations</i>  | 14                   | 8                    | 17          |
| <i>Service Occupations</i>   | 56                   | 0                    | 56          |
| <i>Office and Administrative Support</i>   | 103                  | 2                    | 104         |
| <i>Natural Resources, Construction, and Maintenance Occupations</i>                                | 119                  | 0                    | 119         |

Source: IPEDS Human Resources Survey 2024-25

**EMPLOYEES BY GENDER  
FALL 2020 - 2024**

|   | 2020        | 2021        | 2022        | 2023        | 2024        |
|---|-------------|-------------|-------------|-------------|-------------|
| <b><u>Instructional Staff (Full-time)</u></b> | <b>375</b>  | <b>372</b>  | <b>365</b>  | <b>365</b>  | <b>361</b>  |
| Male  | 174         | 171         | 165         | 157         | 157         |
| Female  | 201         | 201         | 200         | 208         | 204         |
| <b><u>Instructional Staff (Part-time)</u></b> | <b>471</b>  | <b>444</b>  | <b>407</b>  | <b>402</b>  | <b>394</b>  |
| Male  | 186         | 189         | 161         | 152         | 158         |
| Female  | 285         | 255         | 246         | 250         | 236         |
| <b><u>Staff (Full-time)</u></b>               | <b>770</b>  | <b>738</b>  | <b>746</b>  | <b>741</b>  | <b>736</b>  |
| Male  | 337         | 325         | 341         | 316         | 318         |
| Female  | 433         | 413         | 405         | 425         | 418         |
| <b><u>Staff (Part-time)</u></b>               | <b>40</b>   | <b>47</b>   | <b>40</b>   | <b>29</b>   | <b>26</b>   |
| Male  | 9           | 14          | 14          | 9           | 5           |
| Female  | 31          | 33          | 26          | 20          | 21          |
| <b>Total Staff</b>                            | <b>1656</b> | <b>1601</b> | <b>1558</b> | <b>1537</b> | <b>1517</b> |
| Male  | 706         | 699         | 681         | 634         | 638         |
| Female  | 950         | 902         | 877         | 903         | 879         |
|   |             |             |             |             |             |

Source: IPEDS Human Resources Survey

**EMPLOYEES BY IPEDS RACE/ETHNICITY  
FALL 2024 - 2025**

| <b><u>Race/Ethnicity</u></b>            | <b>Instructional Staff (Full-time)</b> | <b>Staff (Full-time)</b> | <b>Instructional Staff (Part-time)</b> | <b>Staff (Part-time)</b> | <b>Total Staff</b> |
|---|--|--------------------------|--|--------------------------|--------------------|
| <b>African American</b>                 | 29                                     | 104                      | 15                                     | 2                        | 150                |
| <b>Asian</b>                            | 64                                     | 29                       | 5                                      | 1                        | 99                 |
| <b>Hispanic</b>                         | 19                                     | 71                       | 14                                     | 2                        | 106                |
| <b>Native American</b>                  | 1                                      | 0                        | 1                                      | 0                        | 2                  |
| <b>Native Hawaiian/Pacific Islander</b> | 0                                      | 2                        | 0                                      | 0                        | 2                  |
| <b>Not Reported</b>                     | 34                                     | 107                      | 161                                    | 10                       | 312                |
| <b>Two or More Races</b>                | 0                                      | 6                        | 5                                      | 0                        | 11                 |
| <b>White</b>                            | 214                                    | 417                      | 193                                    | 11                       | 835                |
|   |  |                          |  |                          |                    |
| <b>Total</b>                            | <b>361</b>                             | <b>736</b>               | <b>394</b>                             | <b>26</b>                | <b>1517</b>        |

Source: IPEDS Human Resources Survey

### NUMBER OF FACULTY BY RANK AND TENURE STATUS FALL 2020 - FALL 2024

|                                  | 2020               |            |            | 2021               |            |            | 2022               |            |            | 2023               |            |            | 2024               |            |            |
|----------------------------------|--------------------|------------|------------|--------------------|------------|------------|--------------------|------------|------------|--------------------|------------|------------|--------------------|------------|------------|
|                                  | Ten/<br>Ten<br>Trk | Non<br>Ten | Total      | Ten/<br>Ten<br>Trk | Non<br>Ten | Total      | Ten/<br>Ten<br>Trk | Non<br>Ten | Total      | Ten/<br>Ten<br>Trk | Non<br>Ten | Total      | Ten/<br>Ten<br>Trk | Non<br>Ten | Total      |
| <b>Full-Time:</b>                |                    |            |            |                    |            |            |                    |            |            |                    |            |            |                    |            |            |
| <i>Professor</i>                 | 145                | 0          | 145        | 149                | 0          | 149        | 156                | 0          | 156        | 159                | 0          | 159        | 160                | 0          | 160        |
| <i>Associate Professor</i>       | 135                | 1          | 136        | 130                | 1          | 131        | 123                | 0          | 123        | 124                | 1          | 125        | 119                | 1          | 120        |
| <i>Assistant Professor</i>       | 72                 | 19         | 91         | 60                 | 20         | 80         | 49                 | 18         | 67         | 37                 | 16         | 53         | 31                 | 17         | 48         |
| <i>Instructor*</i>               | 0                  | 3          | 3          | 0                  | 12         | 12         | 0                  | 19         | 19         | 0                  | 24         | 24         | 0                  | 33         | 33         |
| <b>Total Full-Time Faculty</b>   | 352                | 23         | 375        | 339                | 33         | 372        | 328                | 37         | 365        | 320                | 40         | 360        | 310                | 51         | 361        |
| <b>Total Part-Time Faculty**</b> | 0                  | 15         | 15         | 0                  | 11         | 11         | 0                  | 12         | 12         | 0                  | 12         | 12         | 0                  | 10         | 10         |
| <b>Grand Total</b>               | <b>352</b>         | <b>38</b>  | <b>390</b> | <b>339</b>         | <b>44</b>  | <b>383</b> | <b>328</b>         | <b>49</b>  | <b>377</b> | <b>320</b>         | <b>52</b>  | <b>373</b> | <b>310</b>         | <b>61</b>  | <b>371</b> |

- *\*Instructor includes: Instructor, Clinical Specialist, Lecturer and Senior Lecturer*
- *\*\*Part-Time Faculty includes regular part-time faculty. Adjuncts are not included.*

Source: IRA/HR Data

### TENURE STATUS AMONG FULL-TIME TENURE TRACK FACULTY FALL 2020 - FALL 2024

|                                | 2020                 |              | 2021                 |              | 2022                 |              | 2023                 |              | 2024                 |              |
|--------------------------------|----------------------|--------------|----------------------|--------------|----------------------|--------------|----------------------|--------------|----------------------|--------------|
|                                | Tenured/<br>Eligible | %<br>Tenured | Tenured/<br>Eligible | %<br>Tenured | Tenured/<br>Eligible | %<br>Tenured | Tenured/<br>Eligible | %<br>Tenured | Tenured/<br>Eligible | %<br>Tenured |
| <i>Professor</i>               | 144/145              | 99.3%        | 148/149              | 99.3%        | 155/156              | 99.4%        | 159/159              | 100%         | 160/160              | 100%         |
| <i>Associate<br/>Professor</i> | 103/135              | 76.3%        | 104/130              | 80.0%        | 93/123               | 75.6%        | 96/124               | 77.4%        | 98/119               | 82.4%        |
| <i>Assistant<br/>Professor</i> | 11/72                | 15.3%        | 8/60                 | 13.3%        | 7/49                 | 14.3%        | 3/37                 | 8.1%         | 3/31                 | 9.7%         |
|                                |                      |              |                      |              |                      |              |                      |              |                      |              |
| <b>Total</b>                   | <b>258/352</b>       | <b>73.3%</b> | <b>260/339</b>       | <b>76.7%</b> | <b>255/328</b>       | <b>77.7%</b> | <b>258/320</b>       | <b>80.6%</b> | <b>261/310</b>       | <b>84.2%</b> |

*Key: % Tenured = # Tenured/# Eligible \* 100.*

*Note: Counts include active faculty.*

*Source: IRA/HR Faculty Data*



### AVERAGE SALARY OF FULL-TIME CONTINUING FACULTY BY RANK ACADEMIC YEARS 2020-21 THROUGH 2024-25

|   | 2020-21           |                                       | 2021-22           |                                       | 2022-23           |                                       | 2023-24           |                                       | 2024-25           |                                       |
|---|-------------------|---------------------------------------|-------------------|---------------------------------------|-------------------|---------------------------------------|-------------------|---------------------------------------|-------------------|---------------------------------------|
|   | Average Salary \$ | Average Increase from Previous Year % | Average Salary \$ | Average Increase from Previous Year % | Average Salary \$ | Average Increase from Previous Year % | Average Salary \$ | Average Increase from Previous Year % | Average Salary \$ | Average Increase from Previous Year % |
| <i>Professor</i>                                  | \$126,344         | 2.7%                                  | \$130,332         | 2.5%                                  | \$135,248         | 3.8%                                  | \$135,467         | 0.9%                                  | \$147,188         | 9.6%                                  |
| <i>Associate Professor</i>                        | \$105,089         | 4.9%                                  | \$109,033         | 3.9%                                  | \$114,441         | 4.9%                                  | \$114,350         | 2.3%                                  | \$123,994         | 9.8%                                  |
| <i>Assistant Professor</i>                        | \$86,110          | 5.6%                                  | \$91,910          | 6.8%                                  | \$96,357          | 4.8%                                  | \$97,188          | 4.3%                                  | \$101,508         | 11.2%                                 |
| <i>Instructor</i>                                 | \$60,945          | 0.0%                                  | \$0               | 0.0%                                  | \$87,671          | 0.0%                                  | \$89,972          | 3.8%                                  | \$96,380          | 9.1%                                  |
| <i>Sr. Lecturer /Lecturer/Clinical Specialist</i> | \$91,125          | 0.0%                                  | \$94,067          | 3.2%                                  | \$89,157          | -5.2%                                 | \$88,042          | 3.1%                                  | \$95,522          | 9.8%                                  |
|   |                   |                                       |                   |                                       |                   |                                       |                   |                                       |                   |                                       |

*Note: Includes all full-time faculty*

*Percentage of increase from previous year reflects the percentage of change in total salary expenditures for continuing faculty only, 9 month and 12 month converted salaries*

*Source: IRA/AAUP Annual Survey of Faculty Compensation*

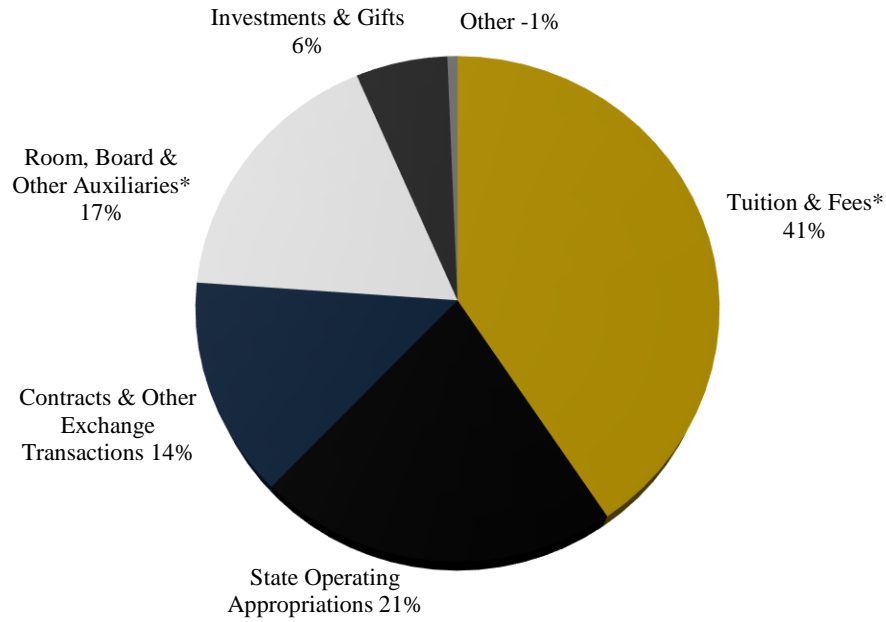
## STATEMENT OF OPERATING ACTIVITIES FY 2020-2024

|  | FY20                 | FY21                 | FY22                 | FY23                 | FY24                 |
|--|----------------------|----------------------|----------------------|----------------------|----------------------|
| <b>Operating Revenue and Additions:</b>                          |                      |                      |                      |                      |                      |
| Tuition & Fees, net of discounts and allowances                  | \$109,792,000        | \$104,343,000        | \$109,956,000        | \$107,718,000        | \$110,816,000        |
| State operating appropriations                                   | \$50,394,000         | \$51,664,000         | \$52,094,000         | \$55,676,000         | \$58,848,000         |
| Contracts & other exchange transactions                          | \$28,804,000         | \$37,958,000         | \$44,013,891         | \$34,041,350         | \$37,999,765         |
| Room, board & other auxiliaries, net of discounts and allowances | \$40,816,000         | \$9,831,000          | \$42,906,000         | \$45,745,000         | \$47,437,000         |
| Investments & gifts  | \$6,558,000          | \$18,442,000         | (\$10,190,000)       | \$15,717,000         | \$15,953,000         |
| Other  | \$6,197,000          | \$6,826,000          | \$5,397,109          | (\$1,743,350)        | (\$1,753,765)        |
|  |                      |                      |                      |                      |                      |
| <b>Total operating revenues and support</b>                      | <b>\$242,561,000</b> | <b>\$229,064,000</b> | <b>\$244,177,000</b> | <b>\$257,154,000</b> | <b>\$269,300,000</b> |
|  |                      |                      |                      |                      |                      |
| <b>Total Discounts and Allowances</b>                            | <b>\$31,594,000</b>  | <b>\$31,100,000</b>  | <b>\$33,922,000</b>  | <b>\$41,827,000</b>  | <b>\$46,624,000</b>  |
|  |                      |                      |                      |                      |                      |
| <b>Operating Expenses and Transfers:</b>                         |                      |                      |                      |                      |                      |
| Instruction & Academic support                                   | \$118,840,000        | \$97,169,000         | \$112,356,000        | \$124,551,000        | \$120,843,000        |
| Sponsored activities   | \$26,639,000         | \$24,786,000         | \$31,578,000         | \$34,752,000         | \$32,447,000         |
| Student services   | \$29,859,000         | \$24,342,000         | \$31,977,000         | \$37,189,000         | \$35,946,000         |
| Student aid  | \$3,990,000          | \$3,287,000          | \$7,843,000          | \$2,927,000          | \$2,157,000          |
| Institutional Support  | \$32,419,000         | \$30,292,000         | \$31,506,000         | \$30,487,000         | \$35,536,000         |
| Room, board & other auxiliaries                                  | \$35,662,000         | \$16,436,000         | \$34,819,000         | \$35,453,000         | \$42,044,000         |
| Operation and maintenance of plant*                              | \$0                  | \$0                  | \$0                  | \$0                  | \$0                  |
| Transfers & other  | \$4,264,000          | \$47,110,000         | \$10,106,000         | (\$4,291,000)        | (\$1,103,000)        |
|  |                      |                      |                      |                      |                      |
| <b>Total operating expenses and transfers</b>                    | <b>\$251,673,000</b> | <b>\$243,422,000</b> | <b>\$260,185,000</b> | <b>\$261,068,000</b> | <b>\$267,870,000</b> |

Source: IRA/IPEDS Finance Survey FY24, GASB

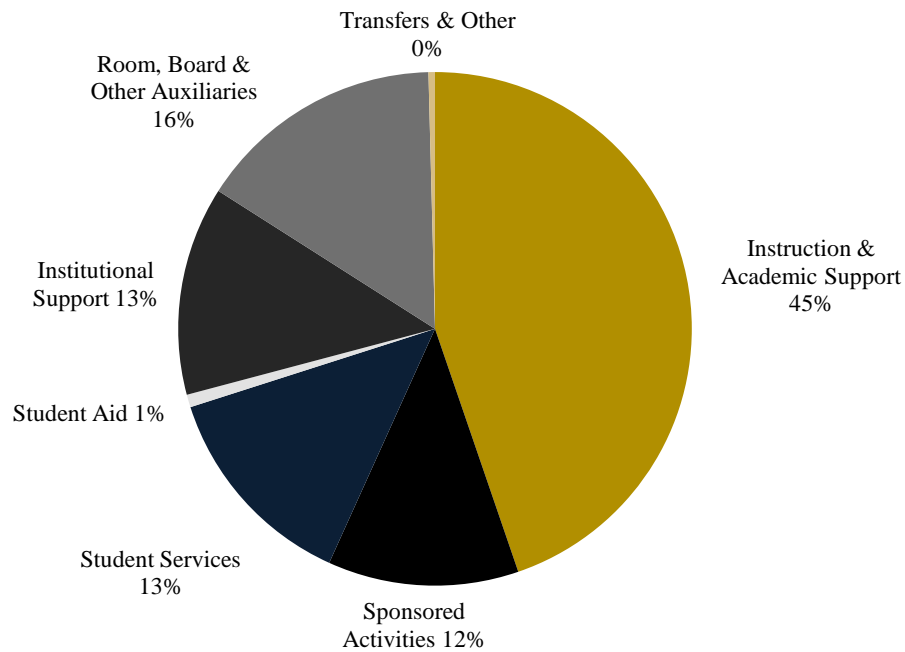
## OPERATING REVENUE, EXPENSES AND TRANSFERS FISCAL YEAR 2024

### REVENUE (\$269,300,000)



*\*Net of Scholarship & Fellowship Allowance*

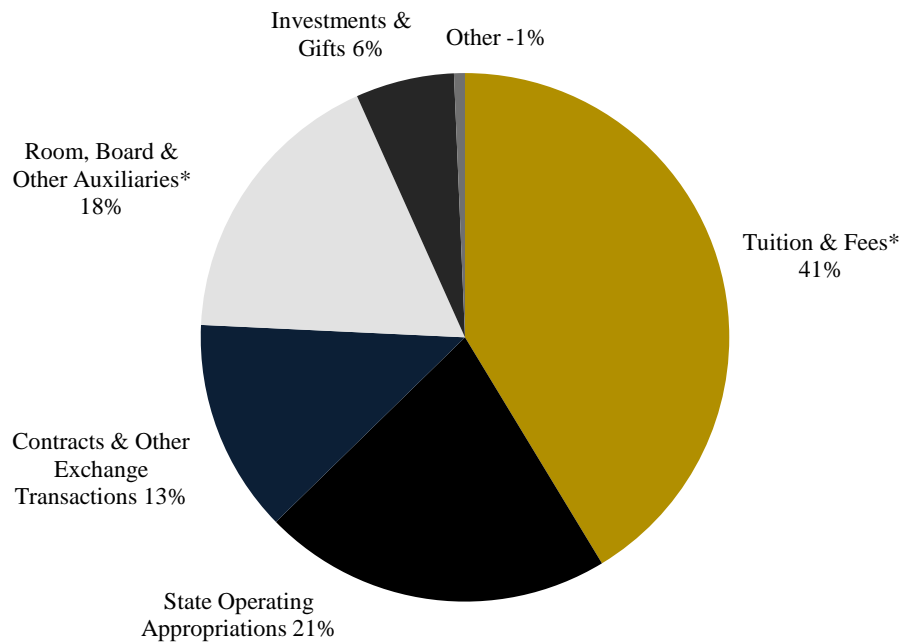
### EXPENSES & TRANSFERS (\$267,870,000)



Source: IRA/IPEDS 2023-24 Finance Survey, FY24, GASB

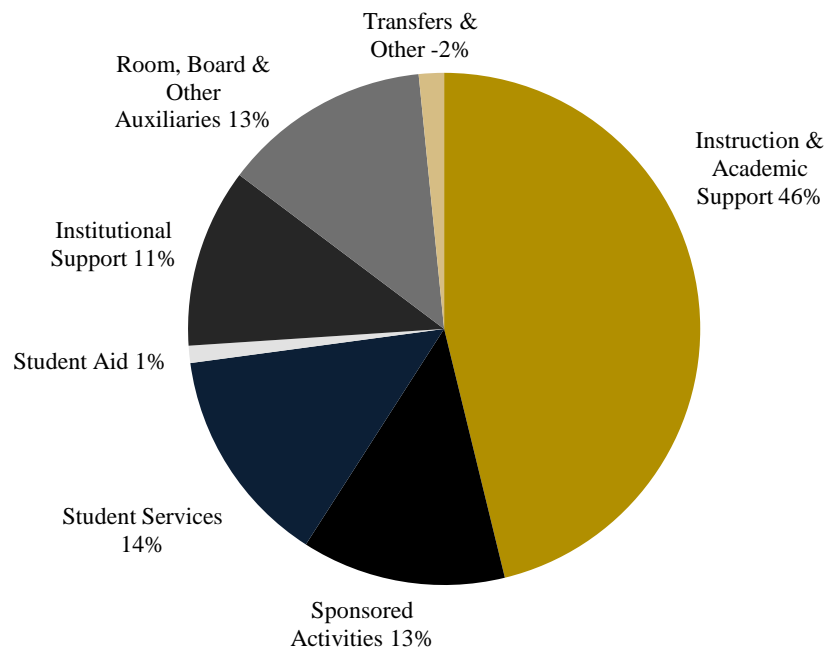
## OPERATING REVENUE, EXPENSES AND TRANSFERS FISCAL YEAR 2023

### REVENUE (\$257,154,000)



*\*Net of Scholarship & Fellowship Allowance*

### EXPENSES & TRANSFERS (\$261,068,000)



Source: IRA/IPEDS 2022-23 Finance Survey, FY23, GASB

### CHANGE IN NET ASSETS FY 2021 - FY 2024

|  | FY21           | FY22          | FY23          | FY24           |
|--|----------------|---------------|---------------|----------------|
| <b>Assets:</b>   |                |               |               |                |
| <b>Current Assets</b>                                  | \$127,622,000  | \$113,742,000 | \$106,014,000 | \$153,273,000  |
| <b>Capital Assets, net</b>                             | \$647,444,000  | \$626,735,000 | \$615,112,000 | \$598,824,000  |
| <b>Other noncurrent assets</b>                         | \$38,545,000   | \$50,648,000  | \$54,361,000  | \$55,263,000   |
| <b>Total assets</b>                                    | \$813,610,000  | \$794,125,000 | \$775,487,000 | \$807,360,000  |
|  |                |               |               |                |
| <b>Deferred outflow of resources</b>                   | \$139,841,000  | \$113,288,000 | \$95,754,000  | \$78,311,000   |
|  |                |               |               |                |
| <b>Liabilities:</b>                                    |                |               |               |                |
| <b>Current liabilities</b>                             | \$31,724,000   | \$36,590,000  | \$29,028,000  | \$54,021,000   |
| <b>Noncurrent liabilities</b>                          | \$575,495,000  | \$497,462,000 | \$499,148,000 | \$511,428,000  |
| <b>Total liabilities</b>                               | \$607,219,000  | \$534,052,000 | \$528,176,000 | \$565,449,000  |
|  |                |               |               |                |
| <b>Deferred inflows of resources</b>                   | \$67,715,000   | \$110,302,000 | \$83,920,000  | \$59,647,000   |
|  |                |               |               |                |
| <b>Net Assets:</b>                                     |                |               |               |                |
| <b>Invested in capital assets, net of related debt</b> | \$289,600,000  | \$270,723,000 | \$256,790,000 | \$239,493,000  |
| <b>Restricted expendable</b>                           | \$1,320,000    | \$808,000     | \$669,000     | \$42,053,000   |
| <b>Unrestricted</b>                                    | (\$12,402,000) | (\$8,472,000) | \$1,686,000   | (\$20,971,000) |
| <b>Total net position</b>                              | \$278,518,000  | \$263,059,000 | \$259,145,000 | \$260,575,000  |
|  |                |               |               |                |
| <i>Ratio of current assets to current liabilities</i>  | 4.02           | 3.11          | 3.65          | 2.84           |

Source: Treasurer's Office, TCNJ  
(GASB 68)

**EXTERNALLY SPONSORED ACTIVITIES**

| Awarded Grants & Sponsored Research - FY2024 |                                  |                        |
|--|----------------------------------|------------------------|
| SCHOOL                                       | DEPARTMENT                       | TOTAL AWARDS           |
| Administration                               | Academic Affairs                 | \$5,030,000.00         |
|  | Graduate & Continuing Education  | \$314,838.00           |
|  | IT Administration                | \$27,976,746.00        |
| Administration Total:                        |                                  | <b>\$33,321,584.35</b> |
|  |                                  |                        |
| School of Art & Communications               | Art Gallery                      | \$,940,000.00          |
|  | Design & Creative Technology     | \$20,000.00            |
|  | Communications Studies           | \$5,700.00             |
| School of Art & Communications Total         |                                  | <b>\$35,100.00</b>     |
|  |                                  |                        |
| School of Business                           | Small Business Development Ctr   | \$76,000.00            |
| School of Business Total                     |                                  | <b>\$76,000.00</b>     |
|  |                                  |                        |
| Centers & Institutes                         | Bonner/CCE                       | \$384,348.00           |
|  | EOF                              | \$469,809.00           |
|  | Sustainability Institute         | \$2,230,428.98         |
| Centers & Institutes Total                   |                                  | <b>\$3,084,585.98</b>  |
|  |                                  |                        |
| School of Education                          | Counselor Education              | \$700,000.00           |
|  | Education Admin & Secondary Ed   | \$350,843.00           |
|  | Special Education, Lang. & Lit.  | \$444,982.00           |
| School of Education Total                    |                                  | <b>\$1,495,825.00</b>  |
|  |                                  |                        |
| School of Engineering                        | Biomedical Engineering           | \$205,000.00           |
|  | Civil Engineering                | \$25,000.00            |
|  | Dean of Engineering              | \$400,000.00           |
|  | Integrative STEM Education       | \$458,500.00           |
| School of Engineering Total                  |                                  | <b>\$1,088,500.00</b>  |
|  |                                  |                        |
| School of Humanities & Social Sciences       | Philosophy & Religion            | \$6,000.00             |
| School of Humanities & Social Sciences Total |                                  | <b>\$6,000.00</b>      |
|  |                                  |                        |
| School of Nursing and Health Sciences        | Nursing                          | \$1,172,974.00         |
|  | Public Health                    | \$375,651.00           |
| School of Nursing and Health Sciences Total  |                                  | <b>\$1,548,625.00</b>  |
|  |                                  |                        |
| School of Science                            | Biology                          | \$43,260.00            |
|  | Chemistry                        | \$1,011,868.00         |
|  | Physics                          | \$237,159.58           |
| School of Science Total                      |                                  | <b>\$1,292,287.58</b>  |
|  |                                  |                        |
| Student Affairs                              | Anti-Violence Initiatives        | \$273,666.00           |
|  | Counseling & Prevention Services | \$300,620.00           |
|  | Health & Wellness                | \$476,458.00           |
| Student Affairs Total                        |                                  | \$1,050,744.00         |
|  |                                  |                        |
| College of New Jersey Total Sponsored Awards |                                  | <b>\$42,999,251.91</b> |

## UNDERGRADUATE TUITION, FEES, ROOM AND BOARD CHARGES AND ANNUAL RATE OF INCREASE, ACADEMIC YEARS 2014-15 UP TO 2024-25

| Tuition              |          |            |              |            | Fees               |            | Room & Board* |                      |
|----------------------|----------|------------|--------------|------------|--------------------|------------|---------------|----------------------|
|                      | Resident |            | Non-Resident |            |                    |            |               |                      |
| Year                 | \$       | % Increase | \$           | % Increase | \$                 | % Increase | \$            | % Increase           |
| 2014-15              | 10,562   | 2.0%       | 21,175       | 2.0%       | 4,462              | 2.0%       | 11,676        | 2.9%                 |
| 2015-16              | 10,879   | 3.0%       | 21,810       | 3.0%       | 4,587              | 2.8%       | 12,498        | 7.0% <sup>1</sup>    |
| 2016-17              | 11,124   | 2.3%       | 22,301       | 2.3%       | 4,670              | 1.8%       | 12,881        | 3.1% <sup>3</sup>    |
| 2017-18 <sup>2</sup> | 12,632   | 2.3%       | 24,061       | 2.0%       | 3,517              | (24.7%)    | 13,200        | 2.5% <sup>3</sup>    |
| 2018-19 <sup>2</sup> | 12,947   | 2.4%       | 24,662       | 2.5%       | 3,604              | 2.5%       | 13,617        | 3.2% <sup>3</sup>    |
| 2019-20 <sup>2</sup> | 13,239   | 2.3%       | 25,217       | 2.3%       | 2,722              | (24.5%)    | 14,048        | 3.1% <sup>3</sup>    |
| 2020-21 <sup>2</sup> | 13,239   | 0%         | 25,217       | 0%         | 2,858              | 5.0%       | 13,416        | (4.5% <sup>3</sup> ) |
| 2021-22 <sup>2</sup> | 13,603   | 2.8%       | 19,044       | 0%         | 3,684              | 26.1%      | 13,752        | 2.5% <sup>3</sup>    |
| 2022-23 <sup>2</sup> | 14,140   | 3.9%       | 19,797       | 3.9%       | 3,838              | 4.2%       | 14,144        | 2.8% <sup>3</sup>    |
| 2023-24 <sup>2</sup> | 14,706   | 4.0%       | 20,589       | 4.0%       | 3,979              | 3.7%       | 14,553        | 2.9% <sup>3</sup>    |
| 2024-25 <sup>2</sup> | 15,294   | 4.0%       | 21,413       | 4.0%       | 4,338 <sup>4</sup> | 8.7%       | 14,976        | 2.9% <sup>3</sup>    |

Source: CIE/Common Data Set

<sup>1</sup>Board charges for 2015-16 reflect pricing for Carte Blanche 'B' plan

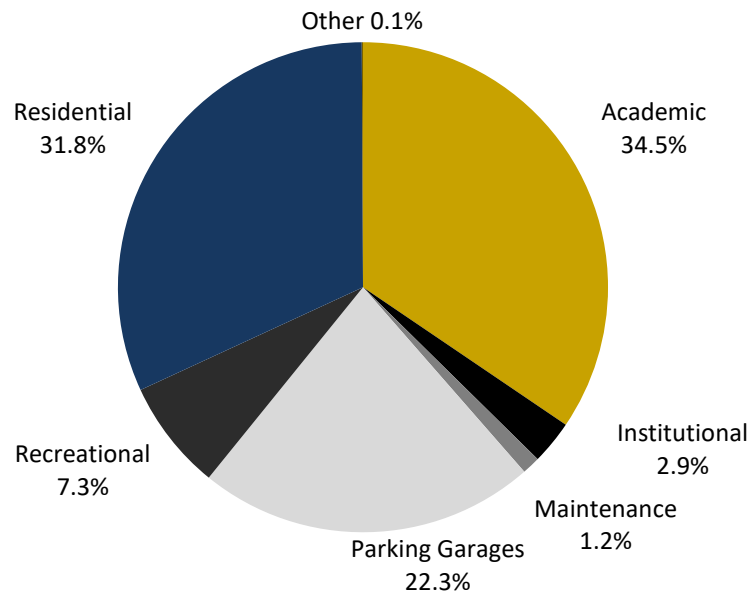
<sup>2</sup>Tuition for 2017-18 and up include fees for Student Services and Computing Access, which were formerly included under Fees

<sup>3</sup>Board Charges for 2016-17 and up reflect pricing for 'Ala Carte I' plan

<sup>4</sup>Mandatory Fees for 2024-25 include the addition of a new Wellness fee

## CAMPUS BUILDING INVENTORY 2024-25

|                                | SqFt. % | Sq.Ft.    | #Buildings |
|--------------------------------|---------|-----------|------------|
| <b>Academic</b>                | 34.48%  | 1,244,717 | 16         |
| <b>Institutional</b>           | 2.89%   | 104,148   | 2          |
| <b>Maintenance</b>             | 1.19%   | 43,111    | 3          |
| <b>Parking Garages</b>         | 22.27%  | 803,684   | 5          |
| <b>Recreational</b>            | 7.28%   | 262,892   | 5          |
| <b>Residential (on campus)</b> | 31.80%  | 1,148,021 | 13         |
| <b>Other</b>                   | 0.08%   | 3,055     | 1          |
| <b>Total Campus Buildings</b>  | 100.0%  | 3,609,628 | 45         |



Source: TCNJ Facilities, Residential Education Offices



## THE COLLEGE OF NEW JERSEY LIBRARY

### Facilities and Services

The R. Barbara Gitenstein Library at the College of New Jersey, provides high-quality information resources, expertise and a learning environment that enhance the search for knowledge and understanding. The Library serves as an intellectual, cultural and social center for the College, empowering TCNJ community members to become self-directed, lifelong learners and responsible citizens.

The five-story, 135,000 square-foot facility, in addition to housing the traditional library collections and services, provides 26 group study rooms, a café, a late-night study area, and a 105-seat multi-purpose auditorium.

### TCNJ Library Collections:

**Archives:** Materials documenting the college's history, dating from the Normal School era in the mid-1800's to the present. Materials range from early annual reports and a historic textbook collection, through college publications, to photographs, slides, and memorabilia.

**Children's/Young Adults Collection:** This specialized area of over 29,000 titles contains many award-winning fiction and non-fiction resources for young people from preschool age through senior high school. Included are reference materials for school age students including: folk tales, poetry, subject guides to picture books, bibliotherapy, selected summaries, review sources and encyclopedias.

**Curriculum & K-12 Elementary – High School Texts Collections:** The Curriculum Reference Collection contains several thousand curriculum guides on microfiche from the Kraus Curriculum Development Library. Behavior objective guides by subject, multiple titles in the series, *Educators Guide to Free Materials*, and Scope and Sequence charts.

**General Collection:** The General Collection consists of more than 500,000 books that have been selected by faculty and subject specialist librarians to support course offerings of the college and to provide a broad representative collection of titles across many disciplines. This growing collection includes fiction, non-fiction, and children's/youth books.

**Music & Media:** The library's Music and Media Collections consist of over 10,000 volumes of printed music, more than 35,000 sound recordings in LP and CD format, and more than 50,000 video recordings in various formats.

**Periodicals:** The library has access to over 100,000 periodical titles, which are available in a variety of formats: print, online, and microfilm/microfiche.

**Reference:** The Reference Collection numbers more than 17,000 volumes and includes general encyclopedias, almanacs, dictionaries, atlases, and the like, as well as a large collection of subject specific reference works.

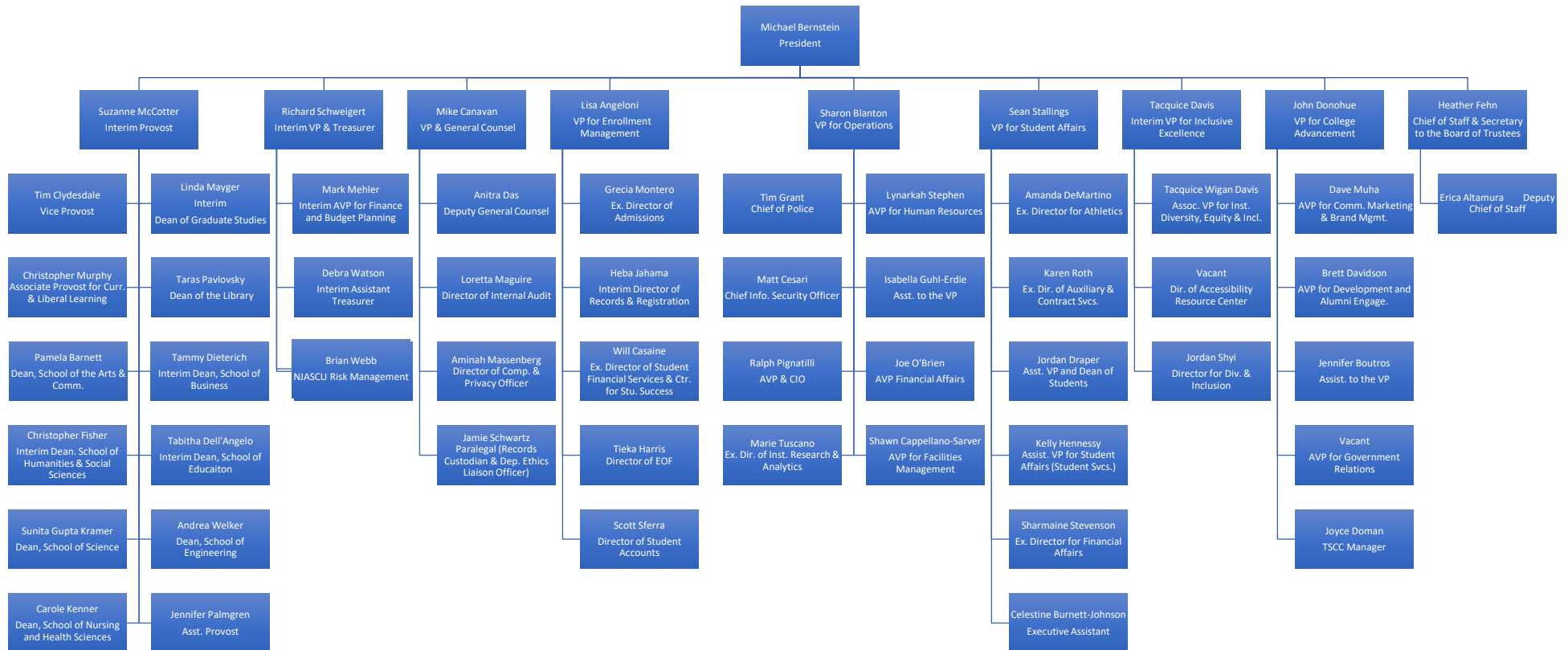
### **Library Holdings Fiscal Year 2024 (IPEDS Academic Libraries (2024-25)):**

| Library Collections/Circulations | Physical Collection | Digital/Electronic Collection |
|----------------------------------|---------------------|-------------------------------|
| Books                            | 504,410             | 339,505                       |
| Databases                        |                     | 128                           |
| Media                            | 49,393              | 227,030                       |
| Serials                          | 7,694               | 144,365                       |
| Total Collection                 | 561,497             | 711,028                       |
|                                  |                     |                               |
| Total Circulation                | 7,158               | 546,321                       |

**THE COLLEGE OF NEW JERSEY  
REGIONAL, NATIONAL, AND SPECIALIZED ACCREDITORS**

Accreditation Board for Engineering and Technology (**ABET**)  
American Chemical Society (**ACS**)  
Association to Advance Collegiate Schools of Business (**AACSB**)  
Association of Small Business Development Centers (**SBDC**)  
Commission on Collegiate Nursing (**CCNE**)  
Computing Accreditation Commission of Accreditation Board for Engineering and Technology (**CAC**)  
Council on Education of the Deaf (**CED**)  
Council on Education for Public Health (**CEPH**)  
Council for Accreditation of Counseling & Related Education Programs (**CACREP**)  
Engineering Accreditation Commission of Accreditation Board for Engineering and Technology (**EAC**)  
Middle States Commission on Higher Education (**MSCHE**)  
National Association of Schools of Music (**NASM**)  
Association for Advancing Quality in Educator Preparation (**AAQEP**)  
National Association of Schools of Art & Design (**NASAD**)

## Administrative Organizational Chart 2024-25



## MEMBERS OF THE BOARD OF TRUSTEES

*AS OF Spring 2025*

### ***Ex-Officio Members***

Dr. Michael Bernstein, *President, Ex-Officio*

### ***Officers of the Board***

Mr. Carl R. Gibbs, *Chair*

### ***Appointed Members***

Mr. Kevin Drennan

Mr. Allen Silk

Mr. James Allen

Ms. Priscilla Nunez

Ms. Eleanor V. Horne

Mr. Shu Mukherjee

Ms. Rosie Hymerling

Mr. Jim Schulz

Ms. Yuki Moore Laurenti

Ms. Rebecca Ostrov

Ms. Tammy Tibbetts

Ms. Madeline Urbish

Ms. Treby Williams, Esq.

### ***Student Members***

Ms. Annmarie Ekladious, *Student Trustee*

Ms. Kevin Janas, *Alternate Student Trustee*

### ***Faculty Representatives***

Dr. Matthew Bender

Dr. Trevor O'Grady

### ***Staff Representatives***

Mr. Raj Manimaran

Ms. Crystel Maldonado

### ***Secretary to the Board***

Ms. Heather Fehn

## **Equal Employment Opportunity & Diversity/Affirmative Action**

The College of New Jersey is committed to equal opportunity, affirmative action and diversity. The College values diversity and is actively engaged in enriching the diversity of its faculty, staff and students. Central to the College's mission is creating a climate that is inclusive and respectful to everyone on campus. The College of New Jersey does not discriminate on the basis of race, creed, color, national origin, nationality, ancestry, age, sex/gender (including pregnancy), marital status, civil union status, domestic partnership status, familial status, religion, affectional or sexual orientation, gender identity or expression, atypical hereditary cellular or blood trait, genetic information, liability for service in the Armed Forces of the United States, or disability.